

Technical Report

Closing Brief

Sensex ended with a gain of 85 points or 0.30% at 28226.61 and Nifty failed to hold move on above 8,750 but managed to close with a gain of 17.85 points or 0.20% at 8734. Even the market breadth, indicating the overall health of the market, was also strong and stood at 1582 advances to 1222 declines and 130 issues remained unchanged on BSE.

Technical Build up

- ❖ Bullish candle with decrease in volume
- ❖ Buy crossover in oscillators.
- ❖ Upper band of Bollinger exist at 8743
- ❖ Crucial moving average of 20/50 SMA are at 8449 and 8252
- ❖ 200 SMA trend deciding level exist at 8347

Outlook for the day

Indian Equity market settled on flat note in a range bound session, taking a breather after Wednesday's surge. Favorable budget (fiscal deficit target 3.2%) and good quarterly results boosted the market sentiment. Many beaten down stocks like Tech and Pharma witnessed fresh buying. On the technical front, Nifty conquered the 8700 level and sustaining above it though doji formation at the top of the current up move, which is an indication of a temporary halt or a pause. As the price retracement is faster than the expectations, the market may correct on time basis and that may keep the market range bound between 8760 and 8650. Momentum oscillators RSI has been reporting an overbought situation. Overall trend continues to remain strong and Index is not expected to corrected beyond 8600 level. On the higher side 9000 would be the immediate resistance for the market. On the option front data shows long buildup in lower strike price put option of 8500-8600 and an upward shift in band 8500-9000.

Technical & Derivative Report

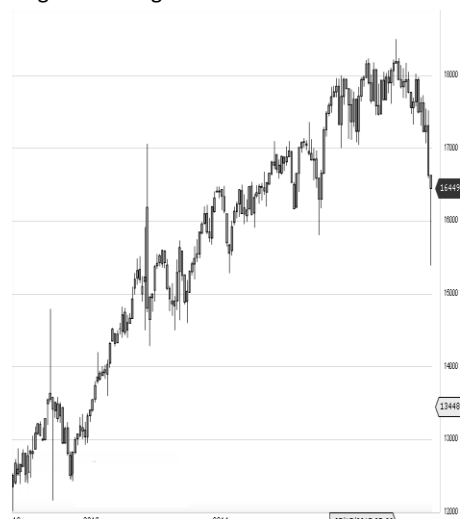
World Indices	LTP	Daily Ch(Pts)	Daily Ch(%)
Dow Jones	19884	-6	-0.03
Nasdaq	5636	-6	-0.11
S&P 500	2280	1	0.06
FTSE 100	7140	33	0.47
DAX	11627	-31	-0.27
Hang Seng	23013	-170	-0.74
Nikkei	18843	-70	-0.37
Sensex	28226	84	0.30
Nifty	8734	17	0.20

Commodity /Forex	LTP	Daily Ch(Pts)	Daily Ch(%)
Gold (\$/Oz)	1216.60	-2.80	-0.23
Silver (\$/Oz)	17.38	-0.05	-0.31
Copper(USD/lb.)	265.10	-3.45	-1.28
Brent Crude(USD/bbl)	56.93	0.37	0.65
USD/INR	67.37	-0.10	-0.15
USD/YEN	112.59	-0.21	-0.19
USD/EUR	1.0761	0.0002	0.02

Support/Resistance levels for Indian Equity Indices					
	S1	S2	CMP	R1	R2
Sensex	28080	27940	28226	28350	28445
Nifty	8690	8650	8734	8770	8800
Nifty (Fut)	8700	8660	8743	8780	8810

Pivot Level	
Sensex	28199
Nifty	8725

US: US market ended mostly flat on Thursday as investors looked ahead to Friday's jobs report, amid growing tensions between the United States and other global powers. Technically DJIA is presently trading at the 5th leg through Elliot wave count with negative divergence in oscillators.



Increase in OI with Increase in Price (Long Buildup)						Increase in OI with Decrease in Price (Short Buildup)					
Symbol	Prev OI	Curr OI	OI Chg (%)	Curr Pr.	Pr.Chg (%)	Symbol	Prev OI	Curr OI	OI Chg (%)	Curr Pr.	Pr.Chg (%)
CUMMI						TORNTP					
NSIND	969	1527	57.6	905	6.2	HARM	573	672	17.3	1283.05	[1.0]
OFSS	1335	1824	36.6	3545.85	6.5	MARICO	2073	2293	10.6	254.9	[1.4]
STAR	3313	4015	21.2	1088	0.3	DABUR	4642	4948	6.6	275	[0.9]
EXIDEIN						TORNTP					
D	2453	2944	20	210.55	3.2	OWER	1097	1137	3.7	197.4	[1.0]
GODREJI						NMDC	3149	3248	3.1	148.5	[0.3]
ND	760	905	19.1	481.95	10.1						

Nifty gained by 0.20% with Nifty future added 8.5 lakh shares in open interest and stock future added 542.0 Lakh shares in open interest.

- Nifty PCR increased to 1.04 from 0.99
- Total Nifty Calls added 1.5 lakh shares in open interest.
- Total Nifty Puts added 31.8 lakh shares in open interest.
- Maximum open interest (Nifty) in Calls for Jan series is at 9000 and 8500 put.
- FII's bought net Rs.108.59 Cr(provisional), while DIIs sold net Rs.110.89 Cr in cash market.
- FII bought net Rs2256.88 Cr in F&O
- Securities in Ban Period: HDIL, IBREALEST, JINDALSTE, JPASSOCIAT & ORIENTBANK

Nifty Tracker

PARTICULARS	02/02/2017	01/02/2017	31/01/2017	30/01/2017
Spot	8734.25	8716.4	8561.3	8632.75
% Change in Spot	0.20%	1.81%	-0.83%	-0.10%
Nifty(FUT) Feb	8743.95	8737.9	8584.3	8655.35
Nifty(FUT) Feb Vol.	137422	256338	151198	91222
Nifty(FUT) Feb - OI	21658800	20860725	19447125	19939950
Nifty(FUT) Mar	8774.5	8766	8611.25	8682.8
Nifty(FUT) Mar Vol.	4900	9282	6273	3315
Nifty(FUT) Mar - OI	1236300	1211550	1106625	1057575

Trade Statistics for 02/02/2017

PARTICULARS	NO. OF CONTRACTS	TURNOVER (RS. CR.)	PUT CALL RATIO
NSE Index Futures	2,51,639	18063	-
NSE Stock Futures	7,15,168	49902	-
NSE Index Options	82,71,352	6,37,461.17	-
NSE Stock Options	3,92,427	28353	0.47
NSE F&O Total Turnover	96,30,586	733,779	0.83
NSE Cash Turnover	-	26,845.33	-
BSE Cash Turnover	-	3,836.14	-
Total Turnover	-	764461	-

FII Corner (F&O)

FII NET BUYING/SELLING & CHANGE IN OPEN INTEREST (Cr. Rupee)						
PARTICULARS	02/02/2017		01/02/2017		31/01/2017	
	Net Buying /Selling	Change In Open interest	Net Buying /Selling	Change In Open interest	Net Buying /Selling	Change In Open interest
Index Future	-259	1208	119	1660	-320	-699
Index option	3338	1863	2210	2081	500	5549
Stock Future	-858	1028	-447	2480	-996	-125
Stock option	36	589	73	503	-75	668
Total	2257	4687	1955	6724	-891	5393

Market Open Interest

ADDITION/REDUCTION IN MARKET OPEN INTEREST					
Contracts	02/02/2017	01/02/2017	31/01/2017	30/01/2017	27/01/2017
Index Futures	873	2789	-758	306	-6817
Index Options	1105	3720	-120	410	-16377
Stock Futures	16388	12419	12125	10552	-64126
Stock Options	1972	2168	2722	2381	-15442
F&O Total	20337	21096	13968.85	13649.64	-102762.15

Nifty Option Open Interest Statistics

NIFTY OPTIONS HIGHEST ADDITION IN OPEN INTEREST						
Expiry	Strike	Option Type	Settlement Price	Volume	Open Interest	Change In OI
23-Feb-17	8700	PE	79.55	135400	2660100	909525
23-Feb-17	8500	PE	31	127042	5143575	763425
23-Feb-17	8600	PE	49.35	161354	4159125	682725
23-Feb-17	8900	CE	34.85	157472	4013925	318000
23-Feb-17	8800	CE	68.05	185876	4353675	249900
26-Dec-19	5500	PE	80	2894	311250	217050
30-Mar-17	9000	PE	288.3	4434	834675	154575
23-Feb-17	8300	PE	12.7	59944	3638025	145800
30-Mar-17	8800	PE	176.95	5516	902775	133350
30-Mar-17	8900	PE	226.35	4648	757875	131925

NIFTY OPTIONS HIGHEST REDUCTION IN OPEN INTEREST						
Expiry	Strike	Option Type	Settlement Price	Volume	Open Interest	Change In OI
23-Feb-17	8700	CE	121.15	131194	2955975	-419700
23-Feb-17	8500	CE	274.05	13392	1721025	-293400
23-Feb-17	8100	PE	5.65	27594	1611000	-231525
23-Feb-17	8200	PE	8.2	38989	2836875	-154800
23-Feb-17	8000	PE	4.35	24698	3706200	-149700
23-Feb-17	9000	PE	261.55	10982	1556325	-146475
23-Feb-17	9200	CE	3.25	23417	2112675	-120225
23-Feb-17	8200	CE	553.5	2948	1237425	-106425
23-Feb-17	8000	CE	748.4	1899	986625	-87150
23-Feb-17	8300	CE	455.15	3106	1092450	-62250

Stock Option Open Interest Statistics

STOCK OPTIONS WITH HIGHEST ADDITION IN OPEN INTEREST							
Symbol	Expiry	Strike	Option Type	Settl. Price	Volume	Open Interest	Change in OI
JPASSOCIAT	23-Feb-17	17.5	CE	0.1	587	26316000	14824000
JPASSOCIAT	23-Feb-17	15	CE	0.3	1426	40460000	10472000
JPASSOCIAT	23-Feb-17	20	CE	0.05	158	9724000	7344000
JPASSOCIAT	23-Feb-17	12.5	PE	0.65	183	7616000	3740000
JPASSOCIAT	30-Mar-17	2.5	PE	0.05	50	3400000	3400000
NHPC	23-Feb-17	40	CE	0.1	232	3456000	2997000
IFCI	23-Feb-17	35	CE	0.6	660	14938000	2002000
JPASSOCIAT	23-Feb-17	10	PE	0.1	97	13668000	1904000
NHPC	23-Feb-17	27.5	PE	0.15	163	4293000	1782000
IDEA	23-Feb-17	132.5	CE	1	425	2436000	1428000

STOCK OPTIONS WITH HIGHEST REDUCTION IN OPEN INTEREST							
Symbol	Expiry	Strike	Option Type	Settl. Price	Volume	Open Int.	Change in OI
IBREALEST	23-Feb-17	80	CE	3.65	250	1650000	-1150000
FEDERALBNK	23-Feb-17	80	CE	5.6	354	1298000	-1023000
SBIN	23-Feb-17	270	CE	11.2	2094	2133000	-915000
IDEA	23-Feb-17	110	CE	6.2	1445	4564000	-693000
SBIN	23-Feb-17	260	CE	17.3	561	1731000	-675000
ASHOKLEY	23-Feb-17	95	CE	3.15	1360	3815000	-637000
RECLTD	23-Feb-17	155	CE	2.15	198	1074000	-564000
NHPC	23-Feb-17	30	CE	1.65	323	4050000	-513000
IDEA	23-Feb-17	115	CE	4.25	2879	6069000	-497000
DLF	23-Feb-17	150	CE	2.9	994	3315000	-480000

Research Team

Name	Designation	Email ID	Contact No.
Paras Bothra	President Equity Research	paras@ashikagroup.com	+91 22 6611 1704
Krishna Kumar Agarwal	Equity Research Analyst	krishna.a@ashikagroup.com	+91 33 4036 0646
Partha Mazumder	Equity Research Analyst	partha.m@ashikagroup.com	+91 33 4036 0647
Arijit Malakar	Equity Research Analyst	amalakar@ashikagroup.com	+91 33 4036 0644
Kapil Jagasia, CFA	Equity Research Analyst	kapil.j@ashikagroup.com	+91 22 6611 1715
Tirthankar Das	Technical & Derivative Analyst	tirthankar.d@ashikagroup.com	+91 33 4036 0645

SEBI Registration No. INH000000206

Disclosure

The Research Analysts and /or Ashika Stock Broking Limited do hereby certify that all the views expressed in this research report accurately reflect their views about the subject issuer(s) or securities. Moreover, they also certify the followings:-

- The Research Analyst or Ashika Stock Broking Limited or his/its Associates or his/its relative, has any financial interest in the subject company (ies) covered in this report. **Yes**
- The Research Analyst or Ashika Stock Broking Limited or his/its Associates or his/its relative, have actual/beneficial ownership of 1% or more in the subject company, at the end of the month immediately preceding the date of the publication of the research report. **No**
- The Research Analyst or Ashika Stock Broking Limited or his/its Associates or his/its relatives has any material conflict of interest at the time of publication of the research report. **No**
- The Research Analyst or Ashika Stock Broking Limited or his/its Associates have received compensation for investment banking or merchant banking or brokerage services or for product other than for investment banking or merchant banking or brokerage services from the companies covered in this report in the past 12 months. **No**
- The Research Analyst or Ashika Stock Broking Limited or his/its Associates have managed or co managed in the previous 12 months any private or public offering of securities for the company (ies) covered in this report. **No**
- The Research Analyst or Ashika Stock Broking Limited or his/its Associates have received any compensation or other benefits from the company (ies) covered in this report or any third party in connection with the Research Report. **No**
- The Research Analyst has served as an officer, director or employee of the company (ies) covered in the research report. **No**
- The Research Analyst or Ashika Stock Broking Limited has been engaged in Market making activity of the company (ies) covered in the research report. **No**

Disclaimer

This report is for the personal information of the authorized recipient and does not construe to be any investment, legal or taxation advice to you. Ashika Stock Broking Ltd. is not soliciting any action based upon it. This report is not for public distribution and has been furnished to you solely for your information and should not be reproduced or redistributed to any other person in any form. The report is based upon information that we consider reliable, but we do not represent that it is accurate or complete, and it should not be relied upon such. Ashika Stock Broking Ltd. or any of its affiliates or employees shall not be in anyway responsible for any loss or damage that may arise to any person from any inadvertent error in the information contained in this report. Ashika Stock Broking Ltd., or any of its affiliates or employees do not provide, at any time, any express or implied warranty of any kind, regarding any matter pertaining to this report, including without limitation the implied warranties of merchantability, fitness for a particular purpose, and non-infringement. The recipients of this report should rely on their own investigations.