

Technical Report

Closing Brief

Nifty closed the day unchanged at 9173.75 levels to the previous day on the first day of April Series amid muted global cues. On the Sectoral front, NIFTY METAL, NIFTY MEDIA, NIFTY PSU BANK outperformed the broader index, while on the flipside NIFTY BANK, NIFTY PVT BANK, NIFTY FIN SERVICE underperformed Nifty.

Technical Build up

- ❖ Bullish candle with increase in volume
- ❖ Sell crossover in oscillators.
- ❖ Upper band of Bollinger exist at 9217
- ❖ Crucial moving average of 20/50 SMA are at 9034 and 8829
- ❖ 200 SMA trend deciding level exist at 8534

Outlook for the day

Indian Equity market closed almost unchanged after hovering in a narrow range on the last day of the financial year. Hope of GST implementation, strong FIIs and DIIs buying and stable oil price boosted the market sentiment. On the technical front, overall trend is positive as supports are shifting higher and it has been making higher top - higher bottom formation. Nifty is presently trading above the key short term trendline support and as long as index stays above the trendline sideways or minor higher highs towards 9250 or 9350 levels can be a possibility which also coincides with the 61.8% projection of the corrective since Sep 16 till Dec 16. However if Nifty goes below 9019, it may further correct towards 8820 levels in view of the forming bearish M pattern. Nifty has immediate support placed around 9120 levels while the next support is placed around 9080 levels. While on the higher side, the immediate resistance is placed around 9220 levels. On the option Call options of 9500-strike prices witnessed the highest open interest followed by 9200 strike price. On put side, 9000-strike price witnessed the highest open interest. The PCR OI for the week closed up at 0.85 from 0.83, which indicates OTM put writing.

Technical & Derivative Report

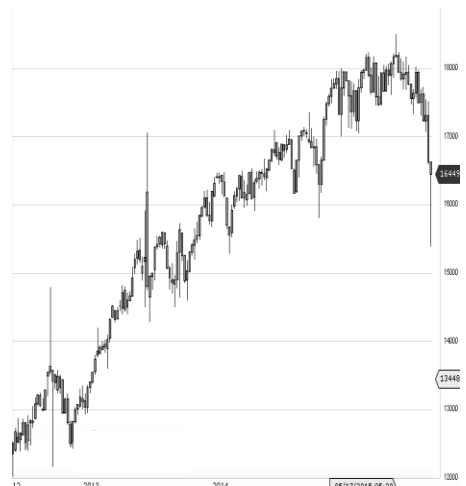
World Indices	LTP	Daily Ch(Pts)	Daily Ch(%)
Dow Jones	20663	-65	-0.31
Nasdaq	5911	-2	-0.04
S&P 500	2362	-5	-0.23
FTSE 100	7322	-46	-0.63
DAX	12312	56	0.46
Hang Seng	24238	127	0.53
Nikkei	18971	62	0.33
Sensex	29620	-26	-0.09
Nifty	9173	-	-

Commodity /Forex	LTP	Daily Ch(Pts)	Daily Ch(%)
Gold (\$/Oz)	1250.80	-0.40	-0.03
Silver (\$/Oz)	18.25	-0.01	-0.06
Copper(USD/lb.)	264.50	-0.75	-0.28
Brent Crude(USD/bbl)	53.47	-0.06	-0.11
USD/INR	64.85	-0.06	-0.11
USD/YEN	111.35	-0.04	-0.04
USD/EUR	1.0676	0.0024	0.23

Support/Resistance levels for Indian Equity Indices					
	S1	S2	CMP	R1	R2
Sensex	29445	29310	29620	29775	29910
Nifty	9120	9080	9173	9220	9260
Nifty (Fut)	9145	9105	9197	9245	9285

Pivot Level					
Sensex				29620	
Nifty				9172	

US: US market closed down on Friday — the last day of the first quarter and of the month — as investors digested a slew of economic data. Technically DJIA is presently trading at the 5th leg through Elliot wave count with negative divergence in oscillators.



Increase in OI with Increase in Price (Long Buildup)					
Symbol	Prev OI	Curr OI	OI Chg (%)	Curr Pr.	Pr.Chg (%)
TORNTP					
HARM	447	579	29.5	1530	2.8
NIITTEC					
H	395	475	20.3	436.25	3.5
JINDALS					
TEL	3557	3973	11.7	121.8	1.5
BEML	3544	3936	11.1	1371.1	3.9
ORIENT BANK	2012	2204	9.5	140.3	1.3

Increase in OI with Decrease in Price (Short Buildup)					
Symbol	Prev OI	Curr OI	OI Chg (%)	Curr Pr.	Pr.Chg (%)
JUSTDIA					
L	2060	2387	15.9	528.7	[3.0]
CANBK	4821	4980	3.3	303.55	[0.1]

Nifty gained by 0.08% with Nifty future added 2.3 lakh shares in open interest and stock future added 1821.3 Lakh shares in open interest.

- Nifty PCR increased to 0.96 from 0.82
- Total Nifty Calls added 197.5 lakh shares in open interest.
- Total Nifty Puts added 235.2 lakh shares in open interest.
- Maximum open interest (Nifty) in Calls for Jan series is at 9200 and 9000 put.
- FII's sold net Rs.295.92 Cr(provisional), while DIIs bought net Rs.1499.41 Cr in cash market.
- FII bought net Rs.804.14 Cr in F&O
- Securities in Ban Period: INFIBEAM

Nifty Tracker

PARTICULARS	31/03/2017	30/03/2017	29/03/2017	28/03/2017
Spot	9173.75	9173.75	9143.8	9100.8
% Change in Spot	0.00%	0.33%	0.47%	0.61%
Nifty(FUT) Apr	9197.75	9189.5	9175.6	9145.8
Nifty(FUT) Apr Vol.	96750	131620	105962	80719
Nifty(FUT) Apr - OI	22945800	23137050	19077975	13831275
Nifty(FUT) May	9220.55	9216.4	0	0
Nifty(FUT) May Vol.	15188	20267	0	0
Nifty(FUT) May - OI	3157500	2980650	0	0

Trade Statistics for 31/03/2017

PARTICULARS	NO. OF CONTRACTS	TURNOVER (RS. CR.)	PUT CALL RATIO
NSE Index Futures	1,64,718	12184	-
NSE Stock Futures	5,48,656	40463	-
NSE Index Options	16,69,985	1,29,059.29	-
NSE Stock Options	3,01,556	22454	0.44
NSE F&O Total Turnover	26,84,915	204,160	0.77
NSE Cash Turnover	-	26,789.18	-
BSE Cash Turnover	-	4953.97	-
Total Turnover	-	235904	-

FII Corner (F&O)

FII NET BUYING/SELLING & CHANGE IN OPEN INTEREST (Cr. Rupee)						
PARTICULARS	31/03/2017		30/03/2017		29/03/2017	
	Net Buying /Selling	Change In Open interest	Net Buying /Selling	Change In Open interest	Net Buying /Selling	Change In Open interest
Index Future	68	287	1244	-15718	755	5138
Index option	754	3054	3921	-33018	122	827
Stock Future	-304	1688	-1542	-24481	211	11962
Stock option	287	2091	262	-8280	-209	-162
Total	805	7119	3885	-81497	879	17766

Market Open Interest

ADDITION/REDUCTION IN MARKET OPEN INTEREST					
Contracts	31/03/2017	30/03/2017	29/03/2017	28/03/2017	27/03/2017
Index Futures	-13940	1763	3206	2867	-31
Index Options	-27338	5776	5885	7276	2413
Stock Futures	-77554	13323	4561	626	5835
Stock Options	-25176	524	-713	38	667
F&O Total	-144007	21385	12939.11	10806.61	8884.09

Nifty Option Open Interest Statistics

NIFTY OPTIONS HIGHEST ADDITION IN OPEN INTEREST						
Expiry	Strike	Option Type	Settlement Price	Volume	Open Interest	Change In OI
27-Apr-17	9200	PE	114.8	63554	2174850	691650
27-Apr-17	9000	PE	50.8	67253	3707775	606675
27-Apr-17	9100	PE	77.45	76965	2332425	569925
27-Apr-17	9200	CE	111.25	107274	3357525	553725
27-Apr-17	9300	CE	64.2	78361	2418075	466350
27-Apr-17	9400	CE	33	55785	2328225	346950
27-Apr-17	9500	CE	15.15	38578	3142650	275400
27-Apr-17	8800	PE	20.75	31930	2439300	216375
25-May-17	8700	CE	544.9	2651	236325	195675
27-Apr-17	9600	CE	6.05	29530	1269900	179550

NIFTY OPTIONS HIGHEST ADDITION IN OPEN INTEREST						
Expiry	Strike	Option Type	Settlement Price	Volume	Open Interest	Change In OI
27-Apr-17	8700	CE	503.65	5445	843525	-257400
28-Dec-17	9000	CE	690.7	5574	793025	-237500
27-Apr-17	8900	CE	326.55	5061	800775	-142200
27-Apr-17	9000	CE	244.5	9294	1386000	-64425
25-May-17	8400	PE	17.7	2120	355125	-57675
27-Apr-17	8200	CE	991.45	1280	782175	-53925
27-Apr-17	8400	CE	794.4	1129	619800	-50925
27-Apr-17	8600	CE	599.85	3706	691725	-50025
27-Apr-17	8800	CE	413.15	2719	962475	-34650
27-Apr-17	8000	PE	1.95	5310	337350	-31275

Stock Option Open Interest Statistics

STOCK OPTIONS WITH HIGHEST ADDITION IN OPEN INTEREST							
Symbol	Expiry	Strike	Option Type	Settl. Price	Volume	Open Interest	Change in OI
SUZLON	27-Apr-17	20	CE	0.75	975	9810000	9810000
SUZLON	27-Apr-17	22.5	CE	0.3	580	6630000	6630000
JPASSOCIAT	27-Apr-17	15	CE	0.55	172	7956000	6052000
JPASSOCIAT	27-Apr-17	17.5	CE	0.2	179	18428000	5576000
SUZLON	27-Apr-17	17.5	PE	0.3	183	3750000	3750000
SUZLON	27-Apr-17	25	CE	0.15	205	3390000	3390000
SOUTHBANK	27-Apr-17	22.5	CE	0.6	399	5766534	3082113
SUZLON	27-Apr-17	20	PE	1.5	136	3000000	3000000
JPASSOCIAT	27-Apr-17	20	CE	0.05	67	4556000	2584000
IDEA	27-Apr-17	90	CE	2.05	1239	4536000	2261000

STOCK OPTIONS WITH HIGHEST REDUCTION IN OPEN INTEREST							
Symbol	Expiry	Strike	Option Type	Settl. Price	Volume	Open Int.	Change in OI
DISHTV	27-Apr-17	100	CE	9.2	14	203000	-98000
DCBBANK	27-Apr-17	145	PE	0.25	20	9000	-90000
PFC	27-Apr-17	125	PE	0.4	17	108000	-84000
L&TFH	27-Apr-17	112.5	PE	0.8	10	54000	-81000
ANDHRABANK	27-Apr-17	45	PE	0.1	19	20000	-80000
HDIL	27-Apr-17	80	CE	5	90	928000	-80000
RELIANCE	27-Apr-17	1260	CE	79.6	1324	146500	-76000
IBREALEST	27-Apr-17	85	CE	5.75	35	620000	-70000
IDEA	27-Apr-17	100	PE	14.4	29	1274000	-70000
PFC	27-Apr-17	140	CE	9.1	39	486000	-48000

Research Team

Name	Designation	Email ID	Contact No.
Paras Bothra	President Equity Research	paras@ashikagroup.com	+91 22 6611 1704
Krishna Kumar Agarwal	Equity Research Analyst	krishna.a@ashikagroup.com	+91 33 4036 0646
Partha Mazumder	Equity Research Analyst	partha.m@ashikagroup.com	+91 33 4036 0647
Arijit Malakar	Equity Research Analyst	amalakar@ashikagroup.com	+91 33 4036 0644
Kapil Jagasia, CFA	Equity Research Analyst	kapil.j@ashikagroup.com	+91 22 6611 1715
Tirthankar Das	Technical & Derivative Analyst	tirthankar.d@ashikagroup.com	+91 33 4036 0645

SEBI Registration No. INH000000206

Disclosure

The Research Analysts and /or Ashika Stock Broking Limited do hereby certify that all the views expressed in this research report accurately reflect their views about the subject issuer(s) or securities. Moreover, they also certify the followings:-

- The Research Analyst or Ashika Stock Broking Limited or his/its Associates or his/its relative, has any financial interest in the subject company (ies) covered in this report. **Yes**
- The Research Analyst or Ashika Stock Broking Limited or his/its Associates or his/its relative, have actual/beneficial ownership of 1% or more in the subject company, at the end of the month immediately preceding the date of the publication of the research report. **No**
- The Research Analyst or Ashika Stock Broking Limited or his/its Associates or his/its relatives has any material conflict of interest at the time of publication of the research report. **No**
- The Research Analyst or Ashika Stock Broking Limited or his/its Associates have received compensation for investment banking or merchant banking or brokerage services or for product other than for investment banking or merchant banking or brokerage services from the companies covered in this report in the past 12 months. **No**
- The Research Analyst or Ashika Stock Broking Limited or his/its Associates have managed or co managed in the previous 12 months any private or public offering of securities for the company (ies) covered in this report. **No**
- The Research Analyst or Ashika Stock Broking Limited or his/its Associates have received any compensation or other benefits from the company (ies) covered in this report or any third party in connection with the Research Report. **No**
- The Research Analyst has served as an officer, director or employee of the company (ies) covered in the research report. **No**
- The Research Analyst or Ashika Stock Broking Limited has been engaged in Market making activity of the company (ies) covered in the research report. **No**

Disclaimer

This report is for the personal information of the authorized recipient and does not construe to be any investment, legal or taxation advice to you. Ashika Stock Broking Ltd. is not soliciting any action based upon it. This report is not for public distribution and has been furnished to you solely for your information and should not be reproduced or redistributed to any other person in any form. The report is based upon information that we consider reliable, but we do not represent that it is accurate or complete, and it should not be relied upon such. Ashika Stock Broking Ltd. or any of its affiliates or employees shall not be in anyway responsible for any loss or damage that may arise to any person from any inadvertent error in the information contained in this report. Ashika Stock Broking Ltd., or any of its affiliates or employees do not provide, at any time, any express or implied warranty of any kind, regarding any matter pertaining to this report, including without limitation the implied warranties of merchantability, fitness for a particular purpose, and non-infringement. The recipients of this report should rely on their own investigations.