

## Technical Report

### Closing Brief

Nifty ended higher by 12.75 points at 8192.25 levels. Broader markets outperformed the benchmark indices with mid-cap & small-cap shares gaining around 0.60%-1.00%. On the sectoral front Media, FMCG, Realty and Banking stocks managed to close the day in the positive territory, while Auto & IT Shares ended the day marginally lower.

### Technical Build up

- ❖ Doji candle with decrease in volume
- ❖ Buy crossover in oscillators.
- ❖ Upper band of Bollinger exist at 8291
- ❖ Crucial moving average of 20/50 SMA are at 8111 and 8247
- ❖ 200 SMA trend deciding level exist at 8255

### Outlook for the day

Indian Equity market sideways on expected lines and settled on a flat note, tracking mixed domestic cues. Weak core sector data and caution ahead of GST Council meet was weighing on sentiment. Brent Crude surged over 1-year high at \$58/bbl. On the technical front, Nifty remained confined within its previous day's range & ended with a Doji formation. Nifty retraced 78.6% of its previous wave & hence consolidation augurs well for the up move to remain intact. The 200 DEMA is placed at 8260 and a breach above it can intensify the existing momentum. On the option data saw marginal increment in 8300 CE and 8000 & 8100 PE.

## Technical & Derivative Report

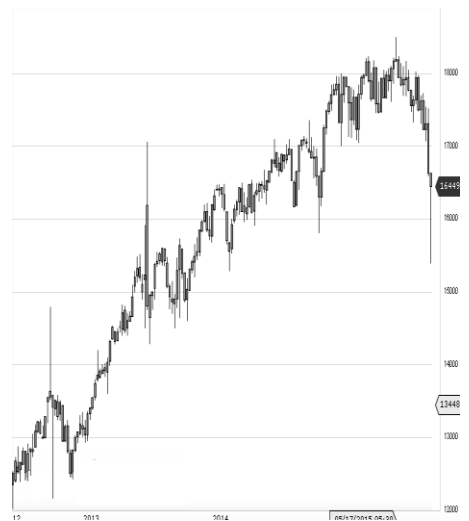
World Indices	LTP	Daily Ch(Pts)	Daily Ch(%)
Dow Jones	19881	119	0.60
Nasdaq	5429	45	0.85
S&P 500	2257	19	0.85
FTSE 100	7177	35	0.49
DAX	11584	-14	-0.12
Hang Seng	22104	-45	-0.21
Nikkei	19520	406	2.13
Sensex	26643	47	0.18
Nifty	8192	12	0.16

Commodity /Forex	LTP	Daily Ch(Pts)	Daily Ch(%)
Gold (\$/Oz)	1158.10	-3.90	-0.34
Silver (\$/Oz)	16.37	-0.04	-0.24
Copper(USD/lb.)	249.15	0.25	0.10
Brent Crude(USD/bbl)	55.83	0.36	0.65
USD/INR	67.41	0.06	0.09
USD/YEN	118.17	0.42	0.36
USD/EUR	1.0561	-0.0054	-0.51

Support/Resistance levels for Indian Equity Indices					
	S1	S2	CMP	R1	R2
Sensex	26490	26360	26595	26765	26865
Nifty	8150	8110	8179	8230	8260
Nifty (Fut)	8155	8115	8196	8235	8265

Pivot Level					
	S1	S2	CMP	R1	R2
Sensex					
Nifty			8186		

**US:** US market rose on Tuesday, the first trading day of 2017, but closed off their session highs as oil prices gave back initial gains. Technically DJIA is presently trading at the 5th leg through Elliot wave count with negative divergence in oscillators.



#### Increase in OI with Increase in Price (Long Buildup)

Symbol	Prev OI	Curr OI	OI Chg (%)	Curr Pr.	Pr.Chg (%)
SUNTV	3417	3902	14.2	524	4.1
IGL	1362	1555	14.2	941.55	2.8
CEATLT					
D	1898	2144	13	1189.2	0.4
IOC	5048	5563	10.2	338.75	4.6
PCJEWELLER	511	562	10	381.2	1.8

#### Increase in OI with Decrease in Price (Short Buildup)

Symbol	Prev OI	Curr OI	OI Chg (%)	Curr Pr.	Pr.Chg (%)
DIVISLA B	5566	6213	11.6	778.8	[2.5]
WIPRO	4151	4522	8.9	469.5	[0.8]
HEROM					
OTOCO	7542	8118	7.6	2997.45	[1.3]
STAR	2962	3135	5.8	1054.9	[1.7]
BANKBA					
RODA	10712	11194	4.5	149	[0.3]

Nifty gained by 0.16% with Nifty future added 4.5 lakh shares in open interest and stock future added 111.7 Lakh shares in open interest.

- Nifty PCR increased to 1.07 from 1.06
- Total Nifty Calls added 10.2 lakh shares in open interest.
- Total Nifty Puts added 15.5 lakh shares in open interest.
- Maximum open interest (Nifty) in Calls for Jan series is at 8200 and 8000 put.
- FII's sold net Rs.500.49 Cr(provisional), while DIIs bought net Rs.562.27 Cr in cash market.
- FII bought net Rs.1936.87 Cr in F&O
- Securities in Ban Period: NIL

## Nifty Tracker

PARTICULARS	03/01/2017	02/01/2017	30/12/2016	29/12/2016
Spot	8192.25	8179.5	8185.8	8103.6
% Change in Spot	0.16%	-0.08%	1.01%	0.86%
Nifty(FUT) Jan	8196.5	8192.1	8187.4	8117.3
Nifty(FUT) Jan Vol.	113527	111530	114999	123349
Nifty(FUT) Jan - OI	17229825	17031150	17107050	16142550
Nifty(FUT) Feb	8222.6	8216.45	8208.45	8138.8
Nifty(FUT) Feb Vol.	5321	3811	5094	4027
Nifty(FUT) Feb - OI	982350	836400	800775	706050

## Trade Statistics for 03/01/2017

PARTICULARS	NO. OF CONTRACTS	TURNOVER (RS. CR.)	PUT CALL RATIO
NSE Index Futures	2,25,639	14988	-
NSE Stock Futures	4,92,756	32239	-
NSE Index Options	38,41,076	2,62,573.94	-
NSE Stock Options	2,41,909	16477	0.49
NSE F&O Total Turnover	48,01,380	326,279	0.87
NSE Cash Turnover	-	15,711.89	-
BSE Cash Turnover	-	2621.4	-
Total Turnover	-	344612	-

## FII Corner (F&O)

FII NET BUYING/SELLING & CHANGE IN OPEN INTEREST (Cr. Rupee)						
PARTICULARS	03/01/2017		02/01/2017		30/12/2016	
	Net Buying /Selling	Change In Open interest	Net Buying /Selling	Change In Open interest	Net Buying /Selling	Change In Open interest
Index Future	-42	-95	-461	-103	753	745
Index option	1373	2765	1658	1857	1511	6448
Stock Future	625	198	-167	1091	820	1012
Stock option	-19	445	23	386	161	1082
Total	1937	3314	1052	3231	3245	9287

## Market Open Interest

ADDITION/REDUCTION IN MARKET OPEN INTEREST					
Contracts	03/01/2017	02/01/2017	30/12/2016	29/12/2016	28/12/2016
Index Futures	20	395	-6360	1027	-1267
Index Options	569	2451	-10306	2055	-867
Stock Futures	5449	9290	-69155	12368	5659
Stock Options	1524	2012	-15979	1263	-81
F&O Total	7563	14148	-101800.42	16712.7	3444.61

## Nifty Option Open Interest Statistics

NIFTY OPTIONS HIGHEST ADDITION IN OPEN INTEREST						
Expiry	Strike	Option Type	Settlement Price	Volume	Open Interest	Change In OI
25-Jan-17	8200	PE	116.75	105294	2657475	280575
25-Jan-17	8300	CE	63.5	137419	3551625	263100
25-Jan-17	8100	PE	80.4	156077	3943500	250950
28-Dec-17	6000	PE	40.2	2501	371475	148800
25-Jan-17	8000	PE	55.1	117921	5940300	141000
25-Jan-17	7700	PE	16.25	47341	2504400	130950
23-Feb-17	8800	CE	15.35	5672	519225	127200
25-Jan-17	8600	CE	6.25	45379	1907775	111000
23-Feb-17	7700	PE	51.05	3514	507450	103050
25-Jan-17	8400	CE	32.3	105870	3560925	80325

NIFTY OPTIONS HIGHEST REDUCTION IN OPEN INTEREST						
Expiry	Strike	Option Type	Settlement Price	Volume	Open Interest	Change In OI
25-Jan-17	7900	PE	37.05	74141	4084500	-264600
25-Jan-17	7600	PE	11.05	26837	2028825	-101925
25-Jan-17	8100	CE	172.1	38231	3002850	-95025
25-Jan-17	8200	CE	110.7	165839	3853875	-90375
25-Jan-17	8000	CE	245.95	10476	2505150	-67125
25-Jan-17	8500	PE	315	3020	909150	-60450
25-Jan-17	7000	PE	1.6	3674	1281000	-55650
25-Jan-17	8800	CE	1.7	8658	1234275	-51825
25-Jan-17	7200	PE	2.45	4746	589950	-50100
25-Jan-17	8800	PE	594.05	957	1088625	-49200

## Stock Option Open Interest Statistics

STOCK OPTIONS WITH HIGHEST ADDITION IN OPEN INTEREST							
Symbol	Expiry	Strike	Option Type	Settl. Price	Volume	Open Interest	Change in OI
GMRINFRA	25-Jan-17	12.5	CE	0.4	300	15345000	2115000
GMRINFRA	25-Jan-17	12.5	PE	0.6	54	3870000	1620000
ADANIPOWER	25-Jan-17	32.5	CE	0.6	295	8140000	1380000
JPASSOCIAT	25-Jan-17	7.5	PE	0.15	107	9044000	1292000
NHPC	25-Jan-17	27.5	CE	0.55	250	3996000	1269000
SAIL	25-Jan-17	52.5	CE	1.2	484	2904000	1176000
PNB	25-Jan-17	120	CE	3.9	1906	4858000	952000
RCOM	25-Jan-17	27.5	PE	0.05	75	3456000	852000
ADANIPOWER	25-Jan-17	35	CE	0.2	127	2720000	740000
IFCI	25-Jan-17	30	CE	0.5	487	13948000	660000

STOCK OPTIONS WITH HIGHEST REDUCTION IN OPEN INTEREST							
Symbol	Expiry	Strike	Option Type	Settl. Price	Volume	Open Int.	Change in OI
PNB	25-Jan-17	115	CE	6.25	530	1232000	-364000
JPASSOCIAT	25-Jan-17	7.5	CE	0.9	131	5984000	-340000
ARVIND	25-Jan-17	360	CE	13.7	875	252000	-248000
JISLJLEQS	25-Jan-17	90	CE	4.55	295	1044000	-234000
BHEL	25-Jan-17	120	CE	6.9	103	565000	-225000
SBIN	25-Jan-17	255	CE	4	1020	1674000	-225000
RECLTD	25-Jan-17	120	CE	6.8	81	366000	-216000
RCOM	25-Jan-17	32.5	PE	0.75	60	1260000	-168000
PNB	25-Jan-17	90	PE	0.15	46	679000	-147000
HINDALCO	25-Jan-17	155	CE	8.35	287	749000	-143500

Name	Designation	Email ID	Contact No.
Paras Bothra	President Equity Research	paras@ashikagroup.com	+91 22 6611 1704
Krishna Kumar Agarwal	Equity Research Analyst	krishna.a@ashikagroup.com	+91 33 4036 0646
Partha Mazumder	Equity Research Analyst	partha.m@ashikagroup.com	+91 33 4036 0647
Arijit Malakar	Equity Research Analyst	amalakar@ashikagroup.com	+91 33 4036 0644
Chanchal Bachhawat	Equity Research Analyst	chanchal.bachhawat@ashikagroup.com	+91 22 6611 1712
Tirthankar Das	Technical & Derivative Analyst	tirthankar.d@ashikagroup.com	+91 33 4036 0645

SEBI Registration No. INH000000206

#### Disclosure

The Research Analysts and /or Ashika Stock Broking Limited do hereby certify that all the views expressed in this research report accurately reflect their views about the subject issuer(s) or securities. Moreover, they also certify the followings:-

- The Research Analyst or Ashika Stock Broking Limited or his/its Associates or his/its relative, has any financial interest in the subject company (ies) covered in this report. **Yes**
- The Research Analyst or Ashika Stock Broking Limited or his/its Associates or his/its relative, have actual/beneficial ownership of 1% or more in the subject company, at the end of the month immediately preceding the date of the publication of the research report. **No**
- The Research Analyst or Ashika Stock Broking Limited or his/its Associates or his/its relatives has any material conflict of interest at the time of publication of the research report. **No**
- The Research Analyst or Ashika Stock Broking Limited or his/its Associates have received any compensation or compensation for investment banking or merchant banking or brokerage services or for product other than for investment banking or merchant banking or brokerage services from the companies covered in this report in the past 12 months. **No**
- The Research Analyst or Ashika Stock Broking Limited or his/its Associates have managed or co managed in the previous 12 months any private or public offering of securities for the company (ies) covered in this report. **No**
- The Research Analyst or Ashika Stock Broking Limited or his/its Associates have received any compensation or other benefits from the company (ies) covered in this report or any third party in connection with the Research Report. **No**
- The Research Analyst has served as an officer, director or employee of the company (ies) covered in the research report. **No**
- The Research Analyst or Ashika Stock Broking Limited has been engaged in Market making activity of the company (ies) covered in the research report. **No**

#### Disclaimer

This report is for the personal information of the authorized recipient and does not construe to be any investment, legal or taxation advice to you. Ashika Stock Broking Ltd. is not soliciting any action based upon it. This report is not for public distribution and has been furnished to you solely for your information and should not be reproduced or redistributed to any other person in any form. The report is based upon information that we consider reliable, but we do not represent that it is accurate or complete, and it should not be relied upon such. Ashika Stock Broking Ltd. or any of its affiliates or employees shall not be in anyway responsible for any loss or damage that may arise to any person from any inadvertent error in the information contained in this report. Ashika Stock Broking Ltd. or any of its affiliates or employees do not provide at any time any express or implied