

# Technical Report

## Closing Brief

Markets closed in red for second day in a row amid profit booking. Contraction in services PMI post GST fuelled the fear factor in the market. However, Nifty managed to sustain above 10000 levels and closed at 10013.65 down by -67.85 points or 0.67 %.

## Technical Build up

- ❖ bearish candle with increase in volume
- ❖ Sell crossover in oscillators.
- ❖ Upper band of Bollinger exist at 10153
- ❖ Crucial moving average of 20/50 SMA are at 9926 and 9735
- ❖ 200 SMA trend deciding level exist at 8965

## Outlook for the day

Indian Equity market moved down for the second session on Thursday after banking, realty and auto stocks struggled owing to concerns over direction of the monetary policy. Moreover, weak global cues and USDINR fell to 2-year high which was a major concern in the market. On the technical front, Nifty formed Bearish Belt Hold pattern followed by a Bearish Engulfing pattern on the daily chart. It has broken its rising support trend line by connecting the recent swing lows of 9543, 9646, 9838 and 9944. NIFTY has very strong support near its 10-day exponential moving average (DEMA) placed at 9985. A break below 13-DEMA could fuel further profit booking with the index declining towards its next support of 9,930-9,950 levels. Going ahead immediate support around 10000 levels and next support at 9940 levels. Immediate resistance is around 10080 and next resistance is around 10140 levels. On the option front maximum Put OI is at 10000 followed by 9800 strike while maximum Call OI is at 10500 followed by 10100 and 10200 strike

## Technical & Derivative Report

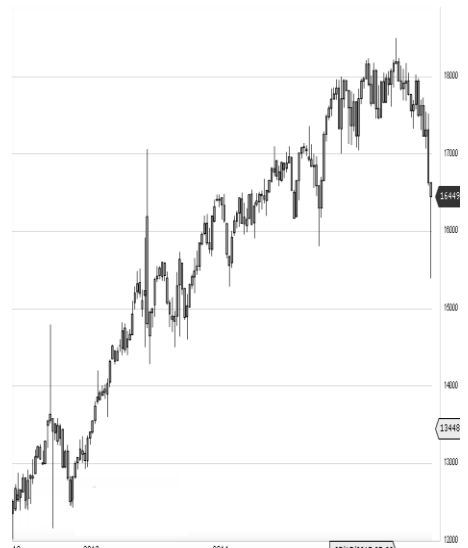
World Indices	LTP	Daily Ch(Pts)	Daily Ch(%)
Dow Jones	22026	9	0.04
Nasdaq	6340	-22	-0.35
S&P 500	2472	-5	-0.22
FTSE 100	7474	63	0.85
DAX	12154	-26	-0.22
Hang Seng	27577	46	0.17
Nikkei	19951	-78	-0.39
Sensex	32237	-238	-0.74
Nifty	10013	-67	-0.67

Commodity /Forex	LTP	Daily Ch(Pts)	Daily Ch(%)
Gold (\$/Oz)	1274.80	0.40	0.03
Silver (\$/Oz)	16.66	0.03	0.15
Copper(USD/lb.)	288.15	0.35	0.12
Brent Crude(USD/bbl)	52.04	0.03	0.06
USD/INR	63.69	-0.01	-0.02
USD/YEN	110.07	0.02	0.02
USD/EUR	1.1877	0.0007	0.06

Support/Resistance levels for Indian Equity Indices					
	S1	S2	CMP	R1	R2
Sensex	32190	31990	32237	32460	32660
Nifty	10000	9940	10013	10080	10140
Nifty (Fut)	10030	9970	10043	10110	10170

Pivot Level					
Sensex					
Nifty			10031		

**US:** US market whipsawed on Thursday on the back of a report that the Russia investigation is intensifying. Technically DJIA is presently trading at the 5th leg through Elliot wave count with negative divergence in oscillators.



### Increase in OI with Increase in Price (Long Buildup)

Symbol	Prev OI	Curr OI	OI Chg (%)	Curr Pr.	Pr.Chg (%)
INFRATE	7238600	8902900	23	401.05	0.6
L	3694950	4467690			
FORTIS	0	0	20.9	164.35	6.4
GODREJI	2167500	2362500	9	657.65	1
ND	8910000	9550000	7.2	272	1.8
AMBUJA	1074780	1129680			
CEM	0	0	5.1	493.55	1.5
BPCL					

### Increase in OI with Decrease in Price (Short Buildup)

Symbol	Prev OI	Curr OI	OI Chg (%)	Curr Pr.	Pr.Chg (%)
CUMMI	553800	624600	12.8	944	[5.6]
NSIND	8114000	9045600	11.5	994.5	[4.2]
LUPIN	3353850	3735450			
TEL	0	0	11.4	143	[10.0]
CIPLA	5801000	6327000	9.1	559.05	[1.9]
CANBK	9181068	9918144	8	349.45	[3.5]

Nifty declined by 0.67% with Nifty future added 6.9 lakh shares in open interest and stock future added 378.9 Lakh shares in open interest.

- Nifty PCR decreased to 1.20 from 1.25
- Total Nifty Calls added 26.4 lakh shares in open interest.
- Total Nifty Puts added 2.3 lakh shares in open interest.
- Maximum open interest (Nifty) in Calls for July series is at 10500 and 10000 put.
- FII's bought net Rs.24.07 Cr(provisional), while DIIs sold net Rs.389.34 Cr in cash market.
- FII bought net Rs.162.77 Cr in F&O
- Securities in Ban Period: INDIACEM, JPASSOCIST, JSWENERGY, KSCL & WOCKPHARMA

## Nifty Tracker

PARTICULARS	03/08/2017	02/08/2017	01/08/2017	31/07/2017
Spot	10013.65	10081	10114.65	10077.1
% Change in Spot	-0.67%	-0.33%	0.37%	0.63%
Nifty(FUT) Aug	10043	10101.1	10138.45	10103
Nifty(FUT) Aug Vol.	88306	84710	59887	68518
Nifty(FUT) Aug - OI	21759000	21067275	20219925	20028750
Nifty(FUT) Sep	10077	10137.3	10174.15	10134.6
Nifty(FUT) Sep Vol.	2435	6421	1791	1883
Nifty(FUT) Sep - OI	1156575	1164225	866100	826725

## Trade Statistics for 03/08/2017

PARTICULARS	NO. OF CONTRACTS	TURNOVER (RS. CR.)	PUT CALL RATIO
NSE Index Futures	2,02,554	17947	-
NSE Stock Futures	7,07,086	50797	-
NSE Index Options	1,03,74,152	10,04,396.68	-
NSE Stock Options	4,68,084	34567	0.5
NSE F&O Total Turnover	1,17,51,876	1,107,707	0.87
NSE Cash Turnover	-	27,705.36	-
BSE Cash Turnover	-	3,950.16	-
Total Turnover	-	1139363	-

## FII Corner (F&O)

FII NET BUYING/SELLING & CHANGE IN OPEN INTEREST (Cr. Rupee)						
PARTICULARS	03/08/2017		02/08/2017		01/08/2017	
	Net Buying /Selling	Change In Open interest	Net Buying /Selling	Change In Open interest	Net Buying /Selling	Change In Open interest
Index Future	-369	90	-1060	1010	-421	-42
Index option	199	1458	-503	-347	-341	1987
Stock Future	191	50024	-42	-50017	-102	868
Stock option	142	458	53	781	174	802
Total	163	52030	-1551	-48573	-690	3614

## Market Open Interest

ADDITION/REDUCTION IN MARKET OPEN INTEREST					
Contracts	03/08/2017	02/08/2017	01/08/2017	31/07/2017	28/07/2017
Index Futures	-101	1290	274	1218	-7315
Index Options	-439	250	1261	3090	-18727
Stock Futures	20577	14695	12321	7801	-70520
Stock Options	1672	1667	1609	2033	-14658
F&O Total	21709	17902	15464.8	14142.34	-111219.84

## Nifty Option Open Interest Statistics

NIFTY OPTIONS HIGHEST ADDITION IN OPEN INTEREST						
Expiry	Strike	Option Type	Settlement Price	Volume	Open Interest	Change In OI
31-Aug-17	10100	CE	82.7	116767	4095000	736350
31-Aug-17	10300	CE	23.75	96510	3395400	625050
31-Aug-17	10500	CE	5.8	66258	4104150	462150
31-Aug-17	10200	CE	46.1	120944	3987975	429600
31-Aug-17	9200	PE	6.35	9712	1541850	192900
31-Aug-17	10000	CE	136.8	52258	2634375	114825
31-Aug-17	10600	CE	3.2	15087	1102575	105900
28-Dec-17	10000	PE	218.45	4155	3134475	95550
28-Sep-17	9700	PE	63.05	3437	413175	89775
28-Sep-17	10500	PE	435.45	1880	615675	87675

NIFTY OPTIONS HIGHEST REDUCTION IN OPEN INTEREST						
Expiry	Strike	Option Type	Settlement Price	Volume	Open Interest	Change In OI
31-Aug-17	10000	PE	93.85	142979	4626750	-212400
31-Aug-17	10100	PE	137.6	58292	1887075	-156150
31-Aug-17	9800	PE	42.2	63005	4202400	-98025
31-Aug-17	9400	PE	10.4	12482	1855950	-87525
31-Aug-17	9600	PE	19.25	33661	2643525	-85800
31-Aug-17	11000	CE	0.95	6749	1195800	-82500
31-Aug-17	9500	CE	554.35	1764	818925	-82050
28-Sep-17	10300	CE	71.85	4261	468225	-44775
31-Aug-17	10200	PE	199.7	12423	896250	-40875
31-Aug-17	9900	CE	202.55	6193	1478100	-37800

## Stock Option Open Interest Statistics

STOCK OPTIONS WITH HIGHEST ADDITION IN OPEN INTEREST							
Symbol	Expiry	Strike	Option Type	Settl. Price	Volume	Open Interest	Change in OI
SUZLON	31-Aug-17	17.5	PE	0.6	653	18390000	8970000
RCOM	31-Aug-17	22.5	CE	1.8	440	3486000	3290000
SOUTHBANK	31-Aug-17	32.5	CE	0.2	177	5203137	2485575
RCOM	31-Aug-17	27.5	CE	0.35	861	5642000	2338000
SUZLON	31-Aug-17	20	CE	0.35	1013	36990000	2100000
SUZLON	31-Aug-17	17.5	CE	1	129	5670000	2070000
RCOM	31-Aug-17	22.5	PE	1.1	453	2590000	1652000
SOUTHBANK	31-Aug-17	30	CE	0.65	134	4142625	1491345
RCOM	31-Aug-17	25	CE	0.8	1517	4494000	1470000
GMRINFRA	31-Aug-17	20	CE	0.35	170	15750000	1440000

STOCK OPTIONS WITH HIGHEST REDUCTION IN OPEN INTEREST							
Symbol	Expiry	Strike	Option Type	Settl. Price	Volume	Open Int.	Change in OI
JPASSOCIAT	31-Aug-17	30	CE	0.5	133	12920000	-2176000
JPASSOCIAT	31-Aug-17	37.5	CE	0.1	32	4080000	-1020000
JPASSOCIAT	31-Aug-17	25	PE	1.95	38	3876000	-884000
JPASSOCIAT	31-Aug-17	35	CE	0.2	75	8840000	-748000
PNB	31-Aug-17	155	PE	9.7	1003	3055500	-693000
PNB	31-Aug-17	150	PE	6.65	1743	3440500	-504000
PNB	31-Aug-17	160	PE	13.1	481	1998500	-490000
JPASSOCIAT	31-Aug-17	40	CE	0.1	14	10540000	-476000
SUZLON	31-Aug-17	25	CE	0.1	60	10590000	-450000
NTPC	31-Aug-17	170	CE	4.9	328	596000	-380000

## Research Team

Name	Designation	Email ID	Contact No.
Paras Bothra	President Equity Research	paras@ashikagroup.com	+91 22 6611 1704
Sanjeev Jain	AVP Equity Research	sanjeev.j@ashikagroup.com	+91 33 4036 0650
Krishna Kumar Agarwal	Equity Research Analyst	krishna.a@ashikagroup.com	+91 33 4036 0646
Partha Mazumder	Equity Research Analyst	partha.m@ashikagroup.com	+91 33 4036 0647
Arijit Malakar	Equity Research Analyst	amalakar@ashikagroup.com	+91 33 4036 0644
Kapil Jagasia	Equity Research Analyst	kapil.j@ashikagroup.com	+91 22 6611 1715
Tirthankar Das	Technical & Derivative Analyst	tirthankar.d@ashikagroup.com	+91 33 4036 0645

Ashika Stock Broking Limited ("ASBL") or Research Entity has started its journey in the year 1994 and is engaged in the business of broking services, depository services, distributor of financial products (Mutual fund, IPO & Bonds). This research report has been prepared and distributed by ASBL in the sole capacity of a Research Analyst (Reg No. INH00000206) of SEBI (Research Analyst) Regulations 2014. ASBL is a wholly owned subsidiary of Ashika Global Securities (P) Ltd., a RBI registered non-deposit taking NBFC Company. Ashika group (details is enumerated on our website [www.ashikagroup.com](http://www.ashikagroup.com)) is an integrated financial service provider inter alia engaged in the business of Investment Banking, Corporate Lending, Commodity Broking, Debt Syndication & Other Advisory Services.

There were no significant and material disciplinary actions against ASBL taken by any regulatory authority during last three years.

### Disclosure

ASBL or its associates, its Research Analysts (including their relatives) may have financial interest in the subject company(ies). However, the said financial interest is not limited to having an open stock market position in /acting as advisor to /having a loan transaction with the subject company(ies) apart from registration as clients.

- 1) ASBL or its Research Analysts (including their relatives) do not have any actual / beneficial ownership of 1% or more of securities of the subject company(ies) at the end of the month immediately preceding the date of publication of this report or date of the public appearance. However ASBL's associates may have actual / beneficial ownership of 1% or more of securities of the subject company(ies).
- 2) ASBL or their Research Analysts (including their relatives) do not have any other material conflict of interest at the time of publication of this research report or date of the public appearance. However ASBL's associates might have an actual / potential conflict of interest (other than ownership).
- 3) ASBL or its associates may have received compensation for investment banking, merchant banking, and brokerage services and for other products and services from the subject companies during the preceding 12 months. However, ASBL or its associates or its Research analysts (forming part of Research Desk) have not received any compensation or other benefits from the subject companies or third parties in connection with the research report. Moreover, Research Analysts have not received any compensation from the companies mentioned herein in the past twelve months.
- 4) ASBL or their Research Analysts have not managed or co-managed public offering of securities for the subject company(ies) in the past twelve months. However ASBL's associates may have managed or co-managed public offering of securities for the subject company(ies) in the past twelve months.
- 5) Research Analysts have not served as an officer, director or employee of the companies mentioned in the report.
- 6) Neither ASBL nor its Research Analysts have been engaged in market making activity for the companies mentioned in the report.

### Disclaimer

The research recommendation and information herein are solely for the personal information of the authorized recipient and does not construe to be an offer documents or any investment, legal or taxation advice or solicitation of any action based upon it. This report is not for public distribution or use by any person or entity, where such distribution, publication, availability or use would be contrary to law, regulation or subject to any registration or licensing requirement. We will not treat recipients as customer by virtue of their receiving this report. The report is based upon the information obtained from public sources that we consider reliable, but we do not guarantee its accuracy or completeness. ASBL shall not be in anyways responsible for any loss or damage that may arise to any such person from any inadvertent error in the information contained in this report. The recipients of this report should rely on their own investigations.