

Technical Report

Closing Brief

Benchmark indices in session gained for the third straight session even after much weaker expected economic data was shown which raised hopes for the central interest rate cut in its next policy meeting in October. Nifty finally ended at 9974.40 levels up by 56.50 points or 0.57%

Technical Build up

- ❖ Bullish candle with increase in volume
- ❖ Buy crossover in oscillators.
- ❖ Lower band of Bollinger exist at 9683
- ❖ Crucial moving average of 20/50 SMA are at 9890 and 9825
- ❖ 200 SMA trend deciding level exist at 9081

Outlook for the day

Indian Equity market shrugged off weak GDP data and posted decent gains, thanks to firm global Markets. Impressive Auto monthly sales boosted the market sentiment. Moreover, FII's turn positive net buyers, strong domestic fund buying and improved monsoon have added fuel in the market. On the technical front, Nifty made a bullish candle continued its up move towards 9980 zones. Nifty is seen taking support at the 50 day EMA in a confluence of the shallow trend line connecting the lows at 9075 and 9448 levels. During the day immediate support placed around 9921 levels and the next support around 9871. On the higher side, the immediate resistance is placed around 10000 levels and the next resistance is placed around 10500 levels. On the F&O front maximum Put OI is at 9700 followed by 9800 strike while maximum Call OI is at 10000 followed by 10100 strike.

Technical & Derivative Report

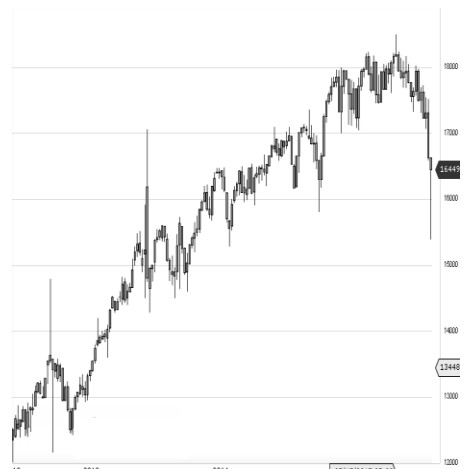
World Indices	LTP	Daily Ch(Pts)	Daily Ch(%)
Dow Jones	21987	39	0.18
Nasdaq	6435	6	0.10
S&P 500	2476	4	0.20
FTSE 100	7438	7	0.11
DAX	12142	86	0.72
Hang Seng	27856	-96	-0.35
Nikkei	19529	-161	-0.82
Sensex	31892	161	0.51
Nifty	9974	56	0.57

Commodity /Forex	LTP	Daily 1.1Ch(Pts)	Daily Ch(%)
Gold (\$/Oz)	1339.00	8.60	0.65
Silver (\$/Oz)	17.95	0.13	0.72
Copper(USD/lb.)	314.80	3.00	0.96
Brent			
Crude(USD/bbl)	52.44	-0.31	-0.59
USD/INR	64.02	0.12	0.19
USD/YEN	109.72	-0.53	-0.48
USD/EUR	1.1886	0.0026	0.22

Support/Resistance levels for Indian Equity Indices					
	S1	S2	CMP	R1	R2
Sensex	31710	31540	31892	31980	32145
Nifty	9920	9870	9974	10000	10050
Nifty (Fut)	9950	9900	10007	10030	10080

Pivot Level					
	S1	S2	CMP	R1	R2
Sensex					
Nifty					

US: US Market closed higher on Friday as Wall Street assessed the likelihood of tighter monetary policy following a weaker-than-expected jobs report. Technically DJIA is presently trading at the 5th leg through Elliot wave count with negative divergence in oscillators.



Increase in OI with Increase in Price (Long Buildup)					
Symbol	Prev OI	Curr OI	OI Chg (%)	Curr Pr.	Pr.Chg (%)
OIL	1806002	2222946	23.1	293.3	3.9
IBREALE	3934000	4777000			
ST	0	0	21.4	247.2	4.5
PIDILITI					
ND	756000	917000	21.3	847.45	0.7
BEML	1739400	2080800	19.6	1855	5
BERGEP					
AINT	1705000	1966800	15.4	251.4	1.5

Increase in OI with Decrease in Price (Short Buildup)					
Symbol	Prev OI	Curr OI	OI Chg (%)	Curr Pr.	Pr.Chg (%)
GRASIM	2112000	2979000	41.1	1169	[2.0]

Nifty gained by 0.57% with Nifty future shaded 10.7 lakh shares in open interest and stock future shaded 62.8 Lakh shares in open interest.

- Nifty PCR increased to 1.38 from 1.26
- Total Nifty Calls shaded 27.5 lakh shares in open interest.
- Total Nifty Puts shaded 29.2 lakh shares in open interest.
- Maximum open interest (Nifty) in Calls for July series is at 10000 and 9700 put.
- FII's sold net Rs.832.81 Cr(provisional), while DIIs bought net Rs.731.72 Cr in cash market.
- FII bought net Rs.2319.46 Cr in F&O
- Securities in Ban Period: IBREALEST

Nifty Tracker

PARTICULARS	01/09/2017	31/08/2017	30/08/2017	29/08/2017
Spot	9974.4	9917.9	9884.4	9796.05
% Change in Spot	0.57%	0.34%	0.90%	-1.18%
Nifty(FUT) Sep	10007.3	9937.2	9912.45	9829.4
Nifty(FUT) Sep Vol.	88747	136948	64270	65090
Nifty(FUT) Sep - OI	16912650	15869775	9650775	7104075
Nifty(FUT) Oct	10034.2	9963.35	0	0
Nifty(FUT) Oct Vol.	3655	3160	0	0
Nifty(FUT) Oct - OI	574650	541050	0	0

Trade Statistics for 01/09/2017

PARTICULARS	NO. OF CONTRACTS	TURNOVER (RS. CR.)	PUT CALL RATIO
NSE Index Futures	1,49,541	12492	-
NSE Stock Futures	6,84,537	53743	-
NSE Index Options	26,44,237	2,26,925.21	-
NSE Stock Options	3,93,783	33281	0.42
NSE F&O Total Turnover	38,72,098	326,441	0.89
NSE Cash Turnover	-	27,336.46	-
BSE Cash Turnover	-	3322.43	-
Total Turnover	-	357100	-

FII Corner (F&O)

FII NET BUYING/SELLING & CHANGE IN OPEN INTEREST (Cr. Rupee)						
PARTICULARS	01/09/2017		31/08/2017		30/08/2017	
	Net Buying /Selling	Change In Open interest	Net Buying /Selling	Change In Open interest	Net Buying /Selling	Change In Open interest
Index Future	294	814	1185	-16166	765	1150
Index option	1922	4386	1112	-31457	407	-1330
Stock Future	93	1433	-81	-6754	63	1083
Stock option	11	2286	171	-11250	-116	-84
Total	2320	8918	2387	-65627	1119	819

Market Open Interest

ADDITION/REDUCTION IN MARKET OPEN INTEREST					
Contracts	01/09/2017	31/08/2017	30/08/2017	29/08/2017	28/08/2017
Index Futures	-11884	1596	674	-283	844
Index Options	-14569	5829	2452	-1649	1808
Stock Futures	-76962	11494	1535	2863	-20927
Stock Options	-18183	217	-248	-4	-50
F&O Total	-121598	19135	4413.04	927.04	-18324.73

Nifty Option Open Interest Statistics

NIFTY OPTIONS HIGHEST ADDITION IN OPEN INTEREST						
Expiry	Strike	Option Type	Settlement Price	Volume	Open Interest	Change In OI
28-Sep-17	9900	PE	72	150727	3531900	1000725
28-Sep-17	9600	PE	22.8	72210	3029400	967800
28-Sep-17	9500	PE	16.35	53079	3426525	660600
28-Sep-17	10000	CE	113.7	142871	3507600	647325
28-Sep-17	9800	PE	49	92029	3720900	627750
28-Sep-17	10100	CE	64.9	121509	2586600	570450
28-Sep-17	10000	PE	106.45	64765	2136375	521400
25-Jun-20	9900	PE	550	4410	1460925	330000
28-Sep-17	11000	CE	0.85	7015	1398750	310350
28-Sep-17	10200	CE	33.25	96874	2306775	306150

NIFTY OPTIONS HIGHEST REDUCTION IN OPEN INTEREST						
Expiry	Strike	Option Type	Settlement Price	Volume	Open Interest	Change In OI
28-Sep-17	9900	CE	176.75	58071	1555500	-190350
28-Sep-17	9800	CE	251.5	16322	1320525	-169500
28-Sep-17	8500	PE	2	3038	312225	-111225
28-Sep-17	9600	CE	422.8	2429	337200	-59925
28-Sep-17	9700	CE	334.85	3968	552300	-47100
28-Sep-17	9850	CE	212.9	1362	67425	-35850
28-Sep-17	10500	CE	3.95	39170	2002350	-32850
28-Sep-17	10700	CE	1.6	7020	292275	-28800
28-Sep-17	9400	CE	613.2	454	221850	-25350
26-Oct-17	9900	CE	246.45	1588	193500	-23100

Stock Option Open Interest Statistics

STOCK OPTIONS WITH HIGHEST ADDITION IN OPEN INTEREST							
Symbol	Expiry	Strike	Option Type	Settl. Price	Volume	Open Interest	Change in OI
GMRINFRA	28-Sep-17	20	CE	0.35	319	8280000	5850000
JPASSOCIAT	28-Sep-17	25	CE	2.05	183	8364000	5780000
JPASSOCIAT	28-Sep-17	27.5	CE	1.15	163	4828000	3808000
JPASSOCIAT	28-Sep-17	30	CE	0.6	228	5576000	3808000
JPASSOCIAT	28-Sep-17	40	CE	0.05	65	3808000	3536000
GMRINFRA	28-Sep-17	17.5	CE	1.1	192	5445000	3375000
SUZLON	28-Sep-17	17.5	CE	0.5	563	20190000	2910000
SBIN	28-Sep-17	300	CE	1.7	2041	5043000	2448000
FEDERALBNK	28-Sep-17	115	CE	1.7	485	3091000	2233000
JPASSOCIAT	28-Sep-17	15	PE	0.1	32	2176000	2108000

STOCK OPTIONS WITH HIGHEST REDUCTION IN OPEN INTEREST							
Symbol	Expiry	Strike	Option Type	Settl. Price	Volume	Open Int.	Change in OI
IDFCBANK	28-Sep-17	55	CE	3.4	134	666000	-324000
DLF	28-Sep-17	180	CE	15.2	149	745000	-215000
DLF	28-Sep-17	175	PE	3	341	465000	-200000
RELCAPITAL	28-Sep-17	800	CE	62.85	600	124500	-184500
BPCL	28-Sep-17	540	CE	15.85	556	239400	-154800
TATAMOTORS	28-Sep-17	380	CE	19.75	1220	463500	-132000
DLF	28-Sep-17	185	CE	11.15	140	445000	-115000
NMDC	28-Sep-17	130	CE	5.85	471	720000	-114000
IDFC	28-Sep-17	60	PE	3	36	646800	-105600
ONGC	28-Sep-17	150	PE	0.9	143	585000	-86250

Research Team

Name	Designation	Email ID	Contact No.
Paras Bothra	President Equity Research	paras@ashikagroup.com	+91 22 6611 1704
Sanjeev Jain	AVP Equity Research	sanjeev.j@ashikagroup.com	+91 33 4036 0650
Krishna Kumar Agarwal	Equity Research Analyst	krishna.a@ashikagroup.com	+91 33 4036 0646
Partha Mazumder	Equity Research Analyst	partha.m@ashikagroup.com	+91 33 4036 0647
Arijit Malakar	Equity Research Analyst	amalakar@ashikagroup.com	+91 33 4036 0644
Kapil Jagasia	Equity Research Analyst	kapil.j@ashikagroup.com	+91 22 6611 1715
Tirthankar Das	Technical & Derivative Analyst	tirthankar.d@ashikagroup.com	+91 33 4036 0645

Ashika Stock Broking Limited ("ASBL") or Research Entity has started its journey in the year 1994 and is engaged in the business of broking services, depository services, distributor of financial products (Mutual fund, IPO & Bonds). This research report has been prepared and distributed by ASBL in the sole capacity of a Research Analyst (Reg No. INH00000206) of SEBI (Research Analyst) Regulations 2014. ASBL is a wholly owned subsidiary of Ashika Global Securities (P) Ltd., a RBI registered non-deposit taking NBFC Company. Ashika group (details is enumerated on our website www.ashikagroup.com) is an integrated financial service provider inter alia engaged in the business of Investment Banking, Corporate Lending, Commodity Broking, Debt Syndication & Other Advisory Services.

There were no significant and material disciplinary actions against ASBL taken by any regulatory authority during last three years.

Disclosure

ASBL or its associates, its Research Analysts (including their relatives) may have financial interest in the subject company(ies). However, the said financial interest is not limited to having an open stock market position in /acting as advisor to /having a loan transaction with the subject company(ies) apart from registration as clients.

- 1) ASBL or its Research Analysts (including their relatives) do not have any actual / beneficial ownership of 1% or more of securities of the subject company(ies) at the end of the month immediately preceding the date of publication of this report or date of the public appearance. However ASBL's associates may have actual / beneficial ownership of 1% or more of securities of the subject company(ies).
- 2) ASBL or their Research Analysts (including their relatives) do not have any other material conflict of interest at the time of publication of this research report or date of the public appearance. However ASBL's associates might have an actual / potential conflict of interest (other than ownership).
- 3) ASBL or its associates may have received compensation for investment banking, merchant banking, and brokerage services and for other products and services from the subject companies during the preceding 12 months. However, ASBL or its associates or its Research analysts (forming part of Research Desk) have not received any compensation or other benefits from the subject companies or third parties in connection with the research report. Moreover, Research Analysts have not received any compensation from the companies mentioned herein in the past twelve months.
- 4) ASBL or their Research Analysts have not managed or co-managed public offering of securities for the subject company(ies) in the past twelve months. However ASBL's associates may have managed or co-managed public offering of securities for the subject company(ies) in the past twelve months.
- 5) Research Analysts have not served as an officer, director or employee of the companies mentioned in the report.
- 6) Neither ASBL nor its Research Analysts have been engaged in market making activity for the companies mentioned in the report.

Disclaimer

The research recommendation and information herein are solely for the personal information of the authorized recipient and does not construe to be an offer documents or any investment, legal or taxation advice or solicitation of any action based upon it. This report is not for public distribution or use by any person or entity, where such distribution, publication, availability or use would be contrary to law, regulation or subject to any registration or licensing requirement. We will not treat recipients as customer by virtue of their receiving this report. The report is based upon the information obtained from public sources that we consider reliable, but we do not guarantee its accuracy or completeness. ASBL shall not be in anyways responsible for any loss or damage that may arise to any such person from any inadvertent error in the information contained in this report. The recipients of this report should rely on their own investigations.