

# Technical Report

## Closing Brief

Benchmark indices resumed rally after 3 days of consolidation and managed to close above the 200-day EMA placed around 8260 levels. Domestic markets started the day with a gap up opening tracking positive cues from the Asian peers and US markets, post which the index was seen crawling higher throughout the day. Nifty finally settled the day at 8273.80 levels higher by 83.30 points i.e. 1.02%.

## Technical Build up

- ❖ Bullish candle with increase in volume
- ❖ Buy crossover in oscillators.
- ❖ Upper band of Bollinger exist at 8313
- ❖ Crucial moving average of 20/50 SMA are at 8122 and 8209
- ❖ 200 SMA trend deciding level exist at 8269

## Outlook for the day

Indian Equity market ended its three-day long consolidation today and gained nearly a percent, thanks to favourable domestic cues and supportive global markets. There was all round buying in the market, especially in the beaten down stocks that lead the rally. Quarterly results commence from this month. Union Budget will be announced on 1st Feb. On the technical front, Nifty managed to cross the level of 8275, which was difficult to cross for quiet some time. It also closed the session above its 200 DEMA of 8260. By crossing the said resistance level the Index has unfolded the next target of 8480 with minor hurdle at 8300 and 8400. Below 8275 it could retest to the level of 8230. However trading below 8230 would be negative for the market. While looking at the sector specific performance nifty should hit the level of 8450 in the near term. On the option front data saw incremental activity in 8400 CE and 8200 PE. Option indicative band expands to 8000-8400.

## Technical & Derivative Report

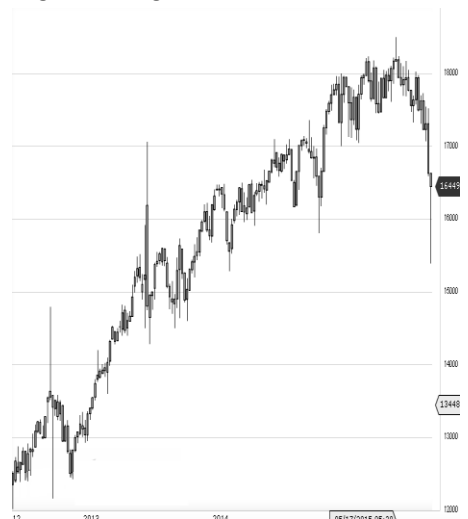
World Indices	LTP	Daily Ch(Pts)	Daily Ch(%)
Dow Jones	19899	-42	-0.21
Nasdaq	5487	10	0.20
S&P 500	2269	-1	-0.08
FTSE 100	7195	5	0.08
DAX	11584	-	0.01
Hang Seng	22603	146	0.65
Nikkei	19444	-77	-0.40
Sensex	26878	245	0.92
Nifty	8273	83	1.02

Commodity /Forex	LTP	Daily Ch(Pts)	Daily Ch(%)
Gold (\$/Oz)	1177.90	-3.40	-0.29
Silver (\$/Oz)	16.62	-0.02	-0.10
Copper(USD/lb.)	254.15	0.40	0.16
Brent Crude(USD/bbl)	56.79	-0.10	-0.18
USD/INR	67.96	-0.08	-0.12
USD/YEN	115.89	0.54	0.47
USD/EUR	1.0586	-0.0021	-0.20

Support/Resistance levels for Indian Equity Indices					
	S1	S2	CMP	R1	R2
Sensex	26730	26630	26878	26970	27165
Nifty	8230	8200	8273	8300	8360
Nifty (Fut)	8245	8215	8288	8315	8375

Pivot Level	
Sensex	26844
Nifty	8260

**US:** US market closed mostly lower on Thursday, as uncertainty over some of President-elect Donald Trump's policies gave investors pause, despite solid economic data. Technically DJIA is presently trading at the 5th leg through Elliot wave count with negative divergence in oscillators.



Increase in OI with Increase in Price (Long Buildup)					
Symbol	Prev OI	Curr OI	OI Chg (%)	Curr Pr.	Pr.Chg (%)
PCJEWELLER	570	723	26.8	410.7	6.2
JUSTDIAL	3297	3813	15.7	390.9	14
HAVELLS	1948	2173	11.6	361.05	2.8
MCLEODRUSS	1461	1626	11.3	141	0.6
TATASHEEL	10846	12046	11.1	419.75	3.4

Increase in OI with Decrease in Price (Short Buildup)					
Symbol	Prev OI	Curr OI	OI Chg (%)	Curr Pr.	Pr.Chg (%)
ICIL	946	1071	13.2	163.4	[1.8]
NITTECH	416	461	10.8	431.9	[1.6]
ABIRLANUVO	8457	8964	6	1289	[0.3]
GRASIM	11852	12470	5.2	862.6	[0.8]
TECHM	7321	7653	4.5	489.3	[2.4]

Nifty gained by 1.02% with Nifty future added 13.8 lakh shares in open interest and stock future added 251.2 Lakh shares in open interest.

- Nifty PCR increased to 1.09 from 1.07
- Total Nifty Calls added 8.3 lakh shares in open interest.
- Total Nifty Puts added 21.6 lakh shares in open interest.
- Maximum open interest (Nifty) in Calls for Jan series is at 8400 and 8000 put.
- FII's sold net Rs.86.88 Cr(provisional), while DIIs bought net Rs.449.07 Cr in cash market.
- FII bought net Rs.3509.08 Cr in F&O
- Securities in Ban Period: JUSTDIAL

## Nifty Tracker

PARTICULARS	05/01/2017	04/01/2017	03/01/2017	02/01/2017
Spot	8273.8	8190.5	8192.25	8179.5
% Change in Spot	1.02%	-0.02%	0.16%	-0.08%
Nifty(FUT) Jan	8288.2	8204.05	8196.5	8192.1
Nifty(FUT) Jan Vol.	143845	90638	113527	111530
Nifty(FUT) Jan - OI	18773775	17529225	17229825	17031150
Nifty(FUT) Feb	8312.95	8229.7	8222.6	8216.45
Nifty(FUT) Feb Vol.	6235	3558	5321	3811
Nifty(FUT) Feb - OI	1165275	1054200	982350	836400

## Trade Statistics for 05/01/2017

PARTICULARS	NO. OF CONTRACTS	TURNOVER (RS. CR.)	PUT CALL RATIO
NSE Index Futures	2,42,537	15992	-
NSE Stock Futures	5,24,967	34222	-
NSE Index Options	63,84,050	4,43,878.47	-
NSE Stock Options	2,89,268	19673	0.51
NSE F&O Total Turnover	74,40,822	513,765	0.93
NSE Cash Turnover	-	19,020.61	-
BSE Cash Turnover	-	3151.34	-
Total Turnover	-	535937	-

## FII Corner (F&O)

FII NET BUYING/SELLING & CHANGE IN OPEN INTEREST (Cr. Rupee)						
PARTICULARS	05/01/2017		04/01/2017		03/01/2017	
	Net Buying /Selling	Change In Open interest	Net Buying /Selling	Change In Open interest	Net Buying /Selling	Change In Open interest
Index Future	1674	1884	181	347	-42	-95
Index option	1541	2136	887	2280	1373	2765
Stock Future	348	1095	318	213	625	198
Stock option	-54	431	-13	619	-19	445
Total	3509	5546	1373	3458	1937	3314

## Market Open Interest

ADDITION/REDUCTION IN MARKET OPEN INTEREST					
Contracts	05/01/2017	04/01/2017	03/01/2017	02/01/2017	30/12/2016
Index Futures	936	783	20	395	-6360
Index Options	1379	745	569	2451	-10306
Stock Futures	12021	8420	5449	9290	-69155
Stock Options	1171	1635	1524	2012	-15979
F&O Total	15506	11583	7562.75	14148.22	-101800.42

## Nifty Option Open Interest Statistics

NIFTY OPTIONS HIGHEST ADDITION IN OPEN INTEREST						
Expiry	Strike	Option Type	Settlement Price	Volume	Open Interest	Change In OI
25-Jan-17	8200	PE	69.05	167283	4398150	1328025
25-Jan-17	8300	PE	105.85	68270	1802025	878175
25-Jan-17	8400	CE	49.25	136181	4456950	642975
25-Jan-17	7500	PE	4.05	31866	3045150	340050
26-Dec-19	8300	PE	550	3969	297750	297075
25-Jan-17	8600	CE	8.9	61830	2312550	259200
25-Jan-17	8250	PE	86	7773	218325	170100
23-Feb-17	7900	PE	56.35	6561	514800	165450
25-Jan-17	8500	CE	22.7	129835	3789225	153300
25-Jan-17	8000	PE	29.05	139669	6266250	140475

NIFTY OPTIONS HIGHEST REDUCTION IN OPEN INTEREST						
Expiry	Strike	Option Type	Settlement Price	Volume	Open Interest	Change In OI
25-Jan-17	8100	CE	226.95	27329	2337450	-667575
25-Jan-17	7800	PE	12.2	67172	3173700	-561525
25-Jan-17	7700	PE	7.95	50991	2036550	-469275
25-Jan-17	8100	PE	44.85	154115	3985050	-329025
25-Jan-17	7900	PE	18.7	95224	3589050	-322500
25-Jan-17	7600	PE	5.55	28317	1929900	-157650
25-Jan-17	8300	CE	92.85	174388	3552975	-154275
25-Jan-17	8000	CE	313.95	7797	2300025	-153975
25-Jan-17	8900	PE	604.35	2262	579075	-117375
25-Jan-17	9000	PE	704.2	3111	2019150	-105600

## Stock Option Open Interest Statistics

STOCK OPTIONS WITH HIGHEST ADDITION IN OPEN INTEREST							
Symbol	Expiry	Strike	Option Type	Settl. Price	Volume	Open Interest	Change in OI
JPASSOCIAT	25-Jan-17	15	CE	0.05	413	15096000	14892000
JPASSOCIAT	25-Jan-17	12.5	CE	0.25	1229	24616000	8500000
JPASSOCIAT	25-Jan-17	7.5	PE	0.05	110	16184000	3740000
JPASSOCIAT	25-Jan-17	10	PE	0.35	567	7616000	3332000
DLF	25-Jan-17	120	PE	2.5	840	2970000	945000
JPASSOCIAT	23-Feb-17	12.5	CE	0.45	27	1088000	884000
TATAMOTORS	25-Jan-17	520	CE	7.55	2714	1422000	646500
ADANIPOWER	25-Jan-17	30	PE	0.35	109	1660000	640000
JINDALSTEL	25-Jan-17	80	CE	1.35	619	1899000	603000
IDFC	25-Jan-17	55	PE	0.9	124	897600	594000

STOCK OPTIONS WITH HIGHEST REDUCTION IN OPEN INTEREST							
Symbol	Expiry	Strike	Option Type	Settl. Price	Volume	Open Int.	Change in OI
JPASSOCIAT	25-Jan-17	10	CE	0.95	1545	19040000	-8568000
VEDL	25-Jan-17	220	CE	12.4	874	1361500	-665000
JPASSOCIAT	25-Jan-17	7.5	CE	3.1	35	3400000	-612000
TATAMOTORS	25-Jan-17	500	CE	15.6	2854	1164000	-493500
SAIL	25-Jan-17	50	CE	2.55	164	1716000	-456000
ICICIBANK	25-Jan-17	260	CE	5.55	2701	2460000	-355000
VEDL	25-Jan-17	225	CE	9.25	1361	549500	-346500
ONGC	25-Jan-17	200	CE	4.3	703	1132500	-337500
IFCI	25-Jan-17	27.5	CE	1.5	182	5170000	-330000
ADANIPOWER	25-Jan-17	30	CE	3.1	122	4020000	-300000

Name	Designation	Email ID	Contact No.
Paras Bothra	President Equity Research	paras@ashikagroup.com	+91 22 6611 1704
Krishna Kumar Agarwal	Equity Research Analyst	krishna.a@ashikagroup.com	+91 33 4036 0646
Partha Mazumder	Equity Research Analyst	partha.m@ashikagroup.com	+91 33 4036 0647
Arijit Malakar	Equity Research Analyst	amalakar@ashikagroup.com	+91 33 4036 0644
Chanchal Bachhawat	Equity Research Analyst	chanchal.bachhawat@ashikagroup.com	+91 22 6611 1712
Tirthankar Das	Technical & Derivative Analyst	tirthankar.d@ashikagroup.com	+91 33 4036 0645

SEBI Registration No. INH000000206

#### Disclosure

The Research Analysts and /or Ashika Stock Broking Limited do hereby certify that all the views expressed in this research report accurately reflect their views about the subject issuer(s) or securities. Moreover, they also certify the followings:-

- The Research Analyst or Ashika Stock Broking Limited or his/its Associates or his/its relative, has any financial interest in the subject company (ies) covered in this report. **Yes**
- The Research Analyst or Ashika Stock Broking Limited or his/its Associates or his/its relative, have actual/beneficial ownership of 1% or more in the subject company, at the end of the month immediately preceding the date of the publication of the research report. **No**
- The Research Analyst or Ashika Stock Broking Limited or his/its Associates or his/its relatives has any material conflict of interest at the time of publication of the research report. **No**
- The Research Analyst or Ashika Stock Broking Limited or his/its Associates have received any compensation or compensation for investment banking or merchant banking or brokerage services or for product other than for investment banking or merchant banking or brokerage services from the companies covered in this report in the past 12 months. **No**
- The Research Analyst or Ashika Stock Broking Limited or his/its Associates have managed or co managed in the previous 12 months any private or public offering of securities for the company (ies) covered in this report. **No**
- The Research Analyst or Ashika Stock Broking Limited or his/its Associates have received any compensation or other benefits from the company (ies) covered in this report or any third party in connection with the Research Report. **No**
- The Research Analyst has served as an officer, director or employee of the company (ies) covered in the research report. **No**
- The Research Analyst or Ashika Stock Broking Limited has been engaged in Market making activity of the company (ies) covered in the research report. **No**

#### Disclaimer

This report is for the personal information of the authorized recipient and does not construe to be any investment, legal or taxation advice to you. Ashika Stock Broking Ltd. is not soliciting any action based upon it. This report is not for public distribution and has been furnished to you solely for your information and should not be reproduced or redistributed to any other person in any form. The report is based upon information that we consider reliable, but we do not represent that it is accurate or complete, and it should not be relied upon such. Ashika Stock Broking Ltd. or any of its affiliates or employees shall not be in anyway responsible for any loss or damage that may arise to any person from any inadvertent error in the information contained in this report. Ashika Stock Broking Ltd. or any of its affiliates or employees do not provide at any time, any express or implied