

# Technical Report

## Closing Brief

Markets closed in green amid choppy session amidst hopes of rate cut in the coming RBI policy and positive European markets. Banking stocks lead the rally ahead of the event. Nifty traded in a range of 85 points and closed at 8128.75 up by 41.95 points i.e., 0.52%.

## Technical Build up

- ❖ Bullish Inside day bar with decrease in volume
- ❖ Buy crossover in oscillators.
- ❖ Lower band of Bollinger exist at 7821
- ❖ Crucial moving average of 20/50 SMA are at 8180 and 8470
- ❖ 200 SMA trend deciding level exist at 8166

## Outlook for the day

Indian Equity market ended on a higher note as European market showed a comeback post initial weakness. Bank stocks advanced. The market breadth, indicating the overall health of the market, was positive. Market volatility is here to stay as a two-day meet of the monetary policy committee (MPC) of the RBI is scheduled on Tuesday, 6 & Wednesday, 7 December 2016. On the technical front, narrow bodied candles with large shadows in the either direction on the weekly scale highlights the prevailing volatility amid indecisiveness ahead of major events and points towards a range bound market scenario. Previous week market found resistance from 21-DEMA and witnessed selling pressure. Hence it seems that the market is heading for some volatile sessions in this week as well due to major events. Nifty might find resistance near 8150 followed by 8250, while on the downside 8000 is the major support, and failing to stand the said level may lead Nifty to correct towards 7850-7900 levels. On the F&O front decrease in OI followed by increase in price indicates short covering and on the option front data shows incremental built-up in 8100 strike price call and put option which indicates that traders are long on volatility and neutral on market direction as they initiate Long Straddle Strategy in the market

## Technical & Derivative Report

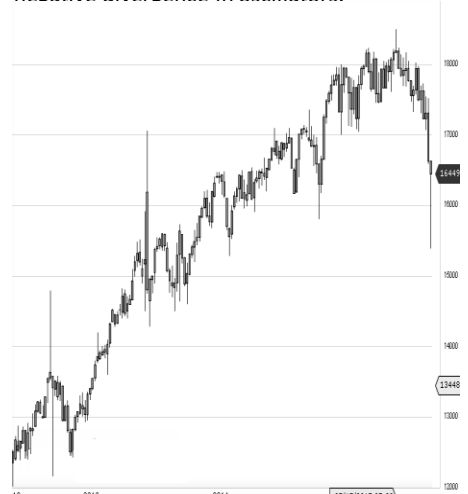
World Indices	LTP	Daily Ch(Pts)	Daily Ch(%)
Dow Jones	19216	45	0.24
Nasdaq	5308	53	1.01
S&P 500	2204	12	0.58
FTSE 100	6746	16	0.24
DAX	10684	171	1.63
Hang Seng	22644	138	0.62
Nikkei	18343	68	0.38
Sensex	26349	118	0.45
Nifty	8128	41	0.52

Commodity /Forex	LTP	Daily Ch(Pts)	Daily Ch(%)
Gold (\$/Oz)	1175.30	-1.20	-0.10
Silver (\$/Oz)	16.91	0.01	0.04
Copper(USD/lb.)	267.70	-2.10	-0.78
Brent Crude(USD/bbl)	54.51	-0.43	-0.78
USD/INR	68.21	-0.0075	-0.01
USD/YEN	113.69	-0.16	-0.14
USD/EUR	1.0759	-0.0005	-0.05

Support/Resistance levels for Indian Equity Indices					
	S1	S2	CMP	R1	R2
Sensex	26170	26000	26349	26455	26590
Nifty	8075	8025	8128	8160	8200
Nifty (Fut)	8110	8060	8164	8195	8235

Pivot Level	
Sensex	26288
Nifty	8109

**US:** US market closed higher on Monday, unfazed by a key vote in Italy which led to Prime Minister Matteo Renzi's resignation, as financials, technology and consumer discretionary stocks rose around 1 percent. Technically DJIA is presently trading at the 5th leg through Elliot wave count with negative divergence in oscillators.



Increase in OI with Increase in Price (Long Buildup)					
Symbol	Prev OI	Curr OI	OI Chg (%)	Curr Pr.	Pr.Chg (%)

Increase in OI with Decrease in Price (Short Buildup)					
Symbol	Prev OI	Curr OI	OI Chg (%)	Curr Pr.	Pr.Chg (%)

Nifty gained by 0.52% with Nifty future shaded 1.1 lakh shares in open interest and stock future added 316.9 Lakh shares in open interest.

- Nifty PCR remained unchanged at 1.03
- Total Nifty Calls added 10.9 lakh shares in open interest.
- Total Nifty Puts added 10.7 lakh shares in open interest.
- Maximum open interest (Nifty) in Calls for Oct series is at 8300 and 8000 put.
- FII's sold net Rs.317.85 Cr(provisional), while DIIs bought net Rs.163.64 Cr in cash market.
- FII bought net Rs.78.90 Cr in F&O
- Securities in Ban Period: NIL

## Nifty Tracker

PARTICULARS	05/12/2016	02/12/2016	01/12/2016	30/11/2016
Spot	8128.75	8086.8	8192.9	8224.5
% Change in Spot	0.52%	-1.30%	-0.38%	1.01%
Nifty(FUT) Dec	8164.9	8108.9	8212	8260.35
Nifty(FUT) Dec Vol.	125464	160118	105795	141525
Nifty(FUT) Dec - OI	15520875	15733725	16102125	15600150
Nifty(FUT) Jan	8195.05	8144.55	8247.3	8294.6
Nifty(FUT) Jan Vol.	4807	4995	2888	3948
Nifty(FUT) Jan - OI	1256625	1168650	1113825	1087350

## Trade Statistics for 05/12/2016

PARTICULARS	NO. OF CONTRACTS	TURNOVER (RS. CR.)	PUT CALL RATIO
NSE Index Futures	2,06,506	13514	-
NSE Stock Futures	3,94,137	26130	-
NSE Index Options	23,08,071	1,53,041.16	-
NSE Stock Options	2,07,390	14301	0.52
NSE F&O Total Turnover	31,16,104	206,987	0.87
NSE Cash Turnover	-	14,416.86	-
BSE Cash Turnover	-	2,141.06	-
Total Turnover	-	223545	-

## FII Corner (F&O)

FII NET BUYING/SELLING & CHANGE IN OPEN INTEREST (Cr. Rupee)						
PARTICULARS	05/12/2016		02/12/2016		01/12/2016	
	Net Buying /Selling	Change In Open interest	Net Buying /Selling	Change In Open interest	Net Buying /Selling	Change In Open interest
Index Future	-179	67	242	-431	708	516
Index option	470	829	398	448	724	608
Stock Future	-207	654	-614	-540	304	-365
Stock option	-6	211	2	248	53	310
Total	78	1762	28	-274	1789	1068

## Market Open Interest

ADDITION/REDUCTION IN MARKET OPEN INTEREST					
Contracts	05/12/2016	02/12/2016	01/12/2016	30/11/2016	29/11/2016
Index Futures	75	-268	440	286	556
Index Options	1279	-928	-753	2339	836
Stock Futures	4698	-22851	15447	6046	7165
Stock Options	922	977	1152	642	1177
F&O Total	6974	-23070	16285.56	9313.84	9733.57

## Nifty Option Open Interest Statistics

NIFTY OPTIONS HIGHEST ADDITION IN OPEN INTEREST						
Expiry	Strike	Option Type	Settlement Price	Volume	Open Interest	Change In OI
29-Dec-16	8100	CE	165.75	78465	2395500	459825
29-Dec-16	8100	PE	105	104424	3737400	399675
29-Dec-16	8400	CE	35.3	103572	3945225	248925
29-Dec-16	7700	PE	27.65	52846	2824350	190875
29-Dec-16	7900	PE	54.15	107209	3101325	146400
25-Jan-17	8600	PE	434.85	2089	172725	130950
29-Dec-16	7800	PE	38.4	67984	2826525	130500
25-Jan-17	8000	PE	121.55	5935	1082550	113625
29-Dec-16	8350	CE	48.1	5529	292875	95550
29-Dec-16	7500	PE	14.7	35911	2789750	80025

NIFTY OPTIONS HIGHEST REDUCTION IN OPEN INTEREST						
Expiry	Strike	Option Type	Settlement Price	Volume	Open Interest	Change In OI
29-Dec-16	8300	PE	198.95	11600	1752075	-222450
29-Dec-16	8300	CE	65.15	142219	4634550	-184050
29-Dec-16	8200	PE	145.2	42667	2474175	-143475
29-Dec-16	8600	PE	443.2	2491	681450	-137700
25-Jan-17	8500	CE	62	5796	747075	-53850
29-Dec-16	9000	CE	1.4	2873	2808600	-41400
29-Dec-16	7700	CE	484.45	1657	217050	-41025
29-Dec-16	7900	CE	315.55	3581	593325	-37875
29-Dec-16	8000	CE	236.4	16493	2741925	-35175
29-Dec-16	8400	PE	268.85	3687	1116300	-30900

## Stock Option Open Interest Statistics

STOCK OPTIONS WITH HIGHEST ADDITION IN OPEN INTEREST							
Symbol	Expiry	Strike	Option Type	Settl. Price	Volume	Open Interest	Change in OI
CROMPGREAV	29-Dec-16	75	CE	1.8	466	2304000	2184000
JPASSOCIAT	29-Dec-16	10	CE	0.05	48	14960000	1904000
ADANIPOWER	29-Dec-16	30	PE	1	178	1340000	1060000
CROMPGREAV	29-Dec-16	80	CE	0.95	499	1512000	1008000
ADANIPOWER	29-Dec-16	27.5	PE	0.4	179	2920000	940000
CROMPGREAV	29-Dec-16	60	PE	1.25	275	960000	912000
ADANIPOWER	29-Dec-16	37.5	CE	0.25	101	2420000	880000
CROMPGREAV	29-Dec-16	70	CE	3.5	190	708000	672000
DLF	29-Dec-16	110	PE	3.6	538	1835000	650000
ADANIPOWER	29-Dec-16	32.5	CE	1	1526	5740000	600000

STOCK OPTIONS WITH HIGHEST REDUCTION IN OPEN INTEREST							
Symbol	Expiry	Strike	Option Type	Settl. Price	Volume	Open Int.	Change in OI
ADANIPOWER	29-Dec-16	30	CE	2.25	685	5500000	-500000
ASHOKLEY	29-Dec-16	80	CE	2.1	689	4011000	-476000
HINDALCO	29-Dec-16	180	CE	5.5	956	2268000	-353500
GRANULES	29-Dec-16	110	CE	5.8	52	240000	-190000
ADANIPOWER	29-Dec-16	27.5	CE	4.2	47	2140000	-180000
ICICIBANK	29-Dec-16	250	PE	4.95	584	1290000	-167500
TATAMOTORS	29-Dec-16	480	CE	5.1	1175	1620000	-156000
VEDL	29-Dec-16	240	CE	5.25	531	2076000	-144000
ITC	29-Dec-16	230	CE	7.85	307	369600	-132000
VEDL	29-Dec-16	200	PE	2.05	312	1656000	-132000

Name	Designation	Email ID	Contact No.
Paras Bothra	President Equity Research	paras@ashikagroup.com	+91 22 6611 1704
Krishna Kumar Agarwal	Equity Research Analyst	krishna.a@ashikagroup.com	+91 33 4036 0646
Partha Mazumder	Equity Research Analyst	partha.m@ashikagroup.com	+91 33 4036 0647
Arijit Malakar	Equity Research Analyst	amalakar@ashikagroup.com	+91 33 4036 0644
Chanchal Bachhawat	Equity Research Analyst	chanchal.bachhawat@ashikagroup.com	+91 22 6611 1712
Tirthankar Das	Technical & Derivative Analyst	tirthankar.d@ashikagroup.com	+91 33 4036 0645

SEBI Registration No. INH000000206

#### Disclosure

The Research Analysts and /or Ashika Stock Broking Limited do hereby certify that all the views expressed in this research report accurately reflect their views about the subject issuer(s) or securities. Moreover, they also certify the followings:-

- The Research Analyst or Ashika Stock Broking Limited or his/its Associates or his/its relative, has any financial interest in the subject company (ies) covered in this report. **Yes**
- The Research Analyst or Ashika Stock Broking Limited or his/its Associates or his/its relative, have actual/beneficial ownership of 1% or more in the subject company, at the end of the month immediately preceding the date of the publication of the research report. **No**
- The Research Analyst or Ashika Stock Broking Limited or his/its Associates or his/its relatives has any material conflict of interest at the time of publication of the research report. **No**
- The Research Analyst or Ashika Stock Broking Limited or his/its Associates have received any compensation or compensation for investment banking or merchant banking or brokerage services or for product other than for investment banking or merchant banking or brokerage services from the companies covered in this report in the past 12 months. **No**
- The Research Analyst or Ashika Stock Broking Limited or his/its Associates have managed or co managed in the previous 12 months any private or public offering of securities for the company (ies) covered in this report. **No**
- The Research Analyst or Ashika Stock Broking Limited or his/its Associates have received any compensation or other benefits from the company (ies) covered in this report or any third party in connection with the Research Report. **No**
- The Research Analyst has served as an officer, director or employee of the company (ies) covered in the research report. **No**
- The Research Analyst or Ashika Stock Broking Limited has been engaged in Market making activity of the company (ies) covered in the research report. **No**

#### Disclaimer

This report is for the personal information of the authorized recipient and does not construe to be any investment, legal or taxation advice to you. Ashika Stock Broking Ltd. is not soliciting any action based upon it. This report is not for public distribution and has been furnished to you solely for your information and should not be reproduced or redistributed to any other person in any form. The report is based upon information that we consider reliable, but we do not represent that it is accurate or complete, and it should not be relied upon such. Ashika Stock Broking Ltd. or any of its affiliates or employees shall not be in anyway responsible for any loss or damage that may arise to any person from any inadvertent error in the information contained in this report. Ashika Stock Broking Ltd. or any of its affiliates or employees do not provide at any time, any express or implied