

Technical Report

Closing Brief

Markets opened at a new all time high and tested another milestone of 9700 mark in the opening trade. However profit booking dragged the index into red zone. Nifty closed at 9637.15 down by 37.95 points or 0.39 %.

Technical Build up

- ❖ Bearish candle with decrease in volume
- ❖ Sell crossover in oscillators.
- ❖ Upper band of Bollinger exist at 9718
- ❖ Crucial moving average of 20/50 SMA are at 9514 and 9336
- ❖ 200 SMA trend deciding level exist at 8752

Outlook for the day

Indian Equity market witnessed profit taking at higher levels. The Nifty slipped from a record high of 9,709 and closed on a weak note, as investors remained cautious ahead of RBI monetary policy. Also, market participants holding their bets ahead of the UK general elections and the European Central Bank (ECB) meeting added to the overall weak sentiment. On the technical front, Nifty continues to move higher with its higher high, higher bottom formation but failed to hold its opening gains and slipped towards 9630. The overall trend on the weekly chart remains positive till it holds above the previous high swing in the 9500-9532 zones. The dip in the recent rally halted at 20DMA currently placed at 9,510 and will act as a strong support. The coming session is likely to trade with some volatility on the back RBI monetary policy. Price wise any positive surprise is not expected from the event and hence, any disappointment may lead to some profit booking in the market. On the option front maximum Put OI is at 9500 followed by 9400 and 9600 strike while maximum Call OI is at 9700 followed by 9800 strike.

Technical & Derivative Report

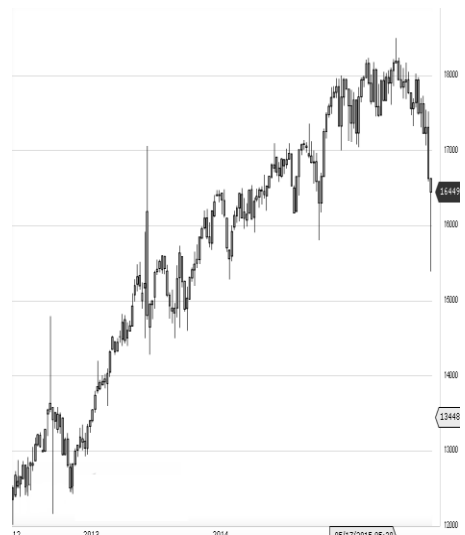
World Indices	LTP	Daily Ch(Pts)	Daily Ch(%)
Dow Jones	21136	-47	-0.23
Nasdaq	6275	-20	-0.33
S&P 500	2429	-6	-0.28
FTSE 100	7524	-	-0.01
DAX	12690	-132	-1.04
Hang Seng	26036	39	0.15
Nikkei	19938	-41	-0.21
Sensex	31190	-118	-0.38
Nifty	9637	-37	-0.39

Commodity /Forex	LTP	Daily Ch(Pts)	Daily Ch(%)
Gold (\$/Oz)	1294.90	-2.60	-0.20
Silver (\$/Oz)	17.67	-0.04	-0.23
Copper(USD/lb.)	255.60	0.90	0.35
Brent Crude(USD/bbl)	49.95	-0.17	-0.34
USD/INR	64.42	0.06	0.10
USD/YEN	109.48	0.07	0.06
USD/EUR	1.1271	-0.0006	-0.05

Support/Resistance levels for Indian Equity Indices					
	S1	S2	CMP	R1	R2
Sensex	31035	30900	31190	31400	31565
Nifty	9590	9550	9637	9700	9750
Nifty (Fut)	9620	9580	9665	9730	9780

Pivot Level	
Sensex	
Nifty	9658

US: US market closed lower on Tuesday as Wall Street hedged bets ahead of key events slated for later this week. Technically DJIA is presently trading at the 5th leg through Elliot wave count with negative divergence in oscillators.



Increase in OI with Increase in Price (Long Buildup)					
Symbol	Prev OI	Curr OI	OI Chg (%)	Curr Pr.	Pr.Chg (%)
APOLLO	1025400	1272600			
TYRE	0	0	24.1	257.3	4.6
HEXAW					
ARE	2766000	3390000	22.6	260.65	2.6
MOTHE					
RSUMI	7932500	9175000	15.7	459.8	0.5
ADANIE	2195200	2516000			
NT	0	0	14.6	128.75	9
PIDILITI					
ND	1522000	1701000	11.8	805.35	0.7

Increase in OI with Decrease in Price (Short Buildup)					
Symbol	Prev OI	Curr OI	OI Chg (%)	Curr Pr.	Pr.Chg (%)
KAJARIA					
CER	341600	417600	22.3	709.65	[0.3]
GODREJ					
CP	556800	656400	17.9	1818	[0.1]
CHOLAF					
IN	257000	285500	11.1	1032	[2.1]
PVR	380000	416400	9.6	1394	[4.0]
NIITTEC					
H	670500	730500	9	550.25	[1.7]

Nifty declined by 0.39% with Nifty future shaded 4.2 lakh shares in open interest and stock future shaded 188.7 Lakh shares in open interest.

- Nifty PCR decreased to 1.18 from 1.20
- Total Nifty Calls added 11.0 lakh shares in open interest.
- Total Nifty Puts added 6.2 lakh shares in open interest.
- Maximum open interest (Nifty) in Calls for May series is at 9700 and 9500 put.
- FII's bought net Rs. 61.16 Cr(provisional), while DIIs sold net Rs.360.01 Cr in cash market.
- FII bought net Rs.1502.14Cr in F&O
- Securities in Ban Period: DLF, GMRINFRA, IBREALEST, INFIBEAM, JPASSOCIAT, RCOM & RELCAPITAL

Nifty Tracker

PARTICULARS	06/06/2017	05/06/2017	02/06/2017	01/06/2017
Spot	9637.15	9675.1	9653.5	9616.1
% Change in Spot	-0.39%	0.22%	0.39%	-0.05%
Nifty(FUT) June	9665.75	9685.5	9652.6	9630.1
Nifty(FUT) June Vol.	74042	75158	74161	70094
Nifty(FUT) June - OI	21582600	22120650	22149375	22195350
Nifty(FUT) July	9685.4	9708.05	9672.4	9648.1
Nifty(FUT) July Vol.	3531	2817	2909	1899
Nifty(FUT) July - OI	1311525	1198050	1166925	1096050

Trade Statistics for 06/06/2017

PARTICULARS	NO. OF CONTRACTS	TURNOVER (RS. CR.)	PUT CALL RATIO
NSE Index Futures	1,21,413	9696	-
NSE Stock Futures	5,90,725	42519	-
NSE Index Options	22,09,155	1,85,915.14	-
NSE Stock Options	3,28,787	24444	0.43
NSE F&O Total Turnover	32,50,080	262,575	1
NSE Cash Turnover	-	22,177.61	-
BSE Cash Turnover	-	3,410.00	-
Total Turnover	-	288162	-

FII Corner (F&O)

FII NET BUYING/SELLING & CHANGE IN OPEN INTEREST (Cr. Rupee)						
PARTICULARS	06/06/2017		05/06/2017		02/06/2017	
	Net Buying /Selling	Change In Open interest	Net Buying /Selling	Change In Open interest	Net Buying /Selling	Change In Open interest
Index Future	-199	-191	195	-298	-210	27
Index option	95	129	804	1821	664	1156
Stock Future	-146	-835	477	368	-1	-834
Stock option	21	210	26	216	79	291
Total	-229	-688	1502	2107	532	640

Market Open Interest

ADDITION/REDUCTION IN MARKET OPEN INTEREST					
Contracts	06/06/2017	05/06/2017	02/06/2017	01/06/2017	31/05/2017
Index Futures	-984	209	226	155	1154
Index Options	-1222	813	243	690	3882
Stock Futures	5234	6818	-26306	14634	10152
Stock Options	621	623	882	1128	1226
F&O Total	3648	8463	-24955.41	16607.01	16413.44

Nifty Option Open Interest Statistics

NIFTY OPTIONS HIGHEST ADDITION IN OPEN INTEREST						
Expiry	Strike	Option Type	Settlement Price	Volume	Open Interest	Change In OI
29-Jun-17	9400	PE	26.6	62321	5778525	-213225
29-Jun-17	9200	PE	11.55	23980	3048850	-113175
29-Jun-17	9600	CE	129.25	51175	4093650	-106950
29-Jun-17	9300	PE	17.15	41804	3744300	-90525
29-Jun-17	9600	PE	67.4	123754	5652750	-75525
29-Jun-17	9100	PE	8.25	8853	1451325	-42525
29-Jun-17	9500	CE	202.3	7398	2253825	-38100
29-Jun-17	10000	PE	333.65	1285	1109775	-34500
29-Jun-17	10500	CE	0.55	4940	687600	-29925
29-Jun-17	9000	PE	6.35	12755	3155250	-26100

NIFTY OPTIONS HIGHEST REDUCTION IN OPEN INTEREST						
Expiry	Strike	Option Type	Settlement Price	Volume	Open Interest	Change In OI
29-Jun-17	9700	CE	72.3	139698	5216175	562125
29-Jun-17	9500	PE	42.4	86568	6633375	223650
29-Jun-17	9800	CE	33.3	97029	4372725	165450
26-Dec-19	11100	PE	791	2160	162000	162000
29-Jun-17	9900	CE	13.2	56376	2674275	132825
26-Dec-19	10200	PE	605	1732	180150	129900
26-Dec-19	10100	PE	597	1645	129600	123375
25-Jun-20	10100	PE	600	1473	110475	110475
27-Jul-17	9900	CE	52.4	3705	548175	100350
31-Dec-20	7800	PE	183.5	1134	85050	85050

Stock Option Open Interest Statistics

STOCK OPTIONS WITH HIGHEST ADDITION IN OPEN INTEREST							
Symbol	Expiry	Strike	Option Type	Settl. Price	Volume	Open Interest	Change in OI
SUZLON	29-Jun-17	25	CE	0.1	190	16920000	1320000
SUZLON	29-Jun-17	20	CE	0.6	417	27660000	1050000
ADANIENT	29-Jun-17	120	PE	3.15	444	1200000	952000
ONGC	29-Jun-17	175	CE	2.8	507	1522500	750000
SAIL	29-Jun-17	50	PE	0.2	99	3000000	732000
ADANIENT	29-Jun-17	135	CE	4.45	914	1080000	680000
IFCI	29-Jun-17	25	CE	0.95	194	3916000	638000
SOUTHBANK	29-Jun-17	32.5	CE	0.15	64	4706022	629679
TATAMOTORS	29-Jun-17	500	CE	3	2396	2514000	613500
BANKBARODA	29-Jun-17	180	CE	4.35	625	2383500	588000

STOCK OPTIONS WITH HIGHEST REDUCTION IN OPEN INTEREST							
Symbol	Expiry	Strike	Option Type	Settl. Price	Volume	Open Int.	Change in OI
GMRINFRA	29-Jun-17	20	CE	0.2	149	35055000	-2970000
FEDERALBNK	29-Jun-17	135	PE	22.4	239	308000	-2277000
GMRINFRA	29-Jun-17	15	PE	0.3	90	13365000	-2250000
GMRINFRA	29-Jun-17	17.5	CE	0.4	133	27855000	-2070000
GMRINFRA	29-Jun-17	17.5	PE	1.6	45	9720000	-765000
RECLTD	29-Jun-17	210	CE	1.6	805	4872000	-624000
ICICIBANK	29-Jun-17	310	CE	13.4	316	1762500	-620000
FEDERALBNK	29-Jun-17	135	CE	0.25	90	1287000	-473000
GMRINFRA	29-Jun-17	15	CE	1.55	22	5625000	-450000
JPASSOCIAT	29-Jun-17	17.5	CE	0.1	9	12308000	-408000

Research Team

Name	Designation	Email ID	Contact No.
Paras Bothra	President Equity Research	paras@ashikagroup.com	+91 22 6611 1704
Krishna Kumar Agarwal	Equity Research Analyst	krishna.a@ashikagroup.com	+91 33 4036 0646
Partha Mazumder	Equity Research Analyst	partha.m@ashikagroup.com	+91 33 4036 0647
Arijit Malakar	Equity Research Analyst	amalakar@ashikagroup.com	+91 33 4036 0644
Kapil Jagasia, CFA	Equity Research Analyst	kapil.j@ashikagroup.com	+91 22 6611 1715
Tirthankar Das	Technical & Derivative Analyst	tirthankar.d@ashikagroup.com	+91 33 4036 0645

Ashika Stock Broking Limited ("ASBL") or Research Entity has started its journey in the year 1994 and is engaged in the business of broking services, depository services, distributor of financial products (Mutual fund, IPO & Bonds). This research report has been prepared and distributed by ASBL in the sole capacity of a Research Analyst (Reg No. INH000000206) of SEBI (Research Analyst) Regulations 2014. ASBL is a wholly owned subsidiary of Ashika Global Securities (P) Ltd., a RBI registered non-deposit taking NBFC Company. Ashika group (details is enumerated on our website www.ashikagroup.com) is an integrated financial service provider inter alia engaged in the business of Investment Banking, Corporate Lending, Commodity Broking, Debt Syndication & Other Advisory Services.

There were no significant and material disciplinary actions against ASBL taken by any regulatory authority during last three years.

Disclosure

ASBL or its associates, its Research Analysts (including their relatives) may have financial interest in the subject company(ies). However, the said financial interest is not limited to having an open stock market position in /acting as advisor to /having a loan transaction with the subject company(ies) apart from registration as clients.

- ASBL or its Research Analysts (including their relatives) do not have any actual / beneficial ownership of 1% or more of securities of the subject company(ies) at the end of the month immediately preceding the date of publication of this report or date of the public appearance. However ASBL's associates may have actual / beneficial ownership of 1% or more of securities of the subject company(ies).
- ASBL or their Research Analysts (including their relatives) do not have any other material conflict of interest at the time of publication of this research report or date of the public appearance. However ASBL's associates might have an actual / potential conflict of interest (other than ownership).
- ASBL or its associates may have received compensation for investment banking, merchant banking, and brokerage services and for other products and services from the subject companies during the preceding 12 months. However, ASBL or its associates or its Research analysts (forming part of Research Desk) have not received any compensation or other benefits from the subject companies or third parties in connection with the research report. Moreover, Research Analysts have not received any compensation from the companies mentioned herein in the past twelve months.
- ASBL or their Research Analysts have not managed or co-managed public offering of securities for the subject company(ies) in the past twelve months. However ASBL's associates may have managed or co-managed public offering of securities for the subject company(ies) in the past twelve months.
- Research Analysts have not served as an officer, director or employee of the companies mentioned in the report.
- Neither ASBL nor its Research Analysts have been engaged in market making activity for the companies mentioned in the report.

Disclaimer

The research recommendation and information herein are solely for the personal information of the authorized recipient and does not construe to be an offer documents or any investment, legal or taxation advice or solicitation of any action based upon it. This report is not for public distribution or use by any person or entity, where such distribution, publication, availability or use would be contrary to law, regulation or subject to any registration or licensing requirement. We will not treat recipients as customer by virtue of their receiving this report. The report is based upon the information obtained from public sources that we consider reliable, but we do not guarantee its accuracy or completeness. ASBL shall not be in anyways responsible for any loss or damage that may arise to any such person from any inadvertent error in the information contained in this report. The recipients of this report should rely on their own investigations.