

Technical Report

Closing Brief

Markets closed marginally in green after market participants cheered the RBI policy outcome. Nifty closed at 9663.90 up by 26.75 points or 0.28 % for the day.

Technical Build up

- ❖ Bearish candle with decrease in volume
- ❖ Sell crossover in oscillators.
- ❖ Upper band of Bollinger exist at 9718
- ❖ Crucial moving average of 20/50 SMA are at 9514 and 9336
- ❖ 200 SMA trend deciding level exist at 8752

Outlook for the day

Indian Equity market settled with modest gains, buoyed by the RBI's status quo on policy rates and a revised estimate of a good monsoon. RBI Governor kept the repo rate unchanged at 6.25%. The reverse repo has been kept at 6% while it has cut SLR by 50 bps to 20%. On the technical front, Nifty formed an Inside Bar and a Doji candle on the daily chart. The overall trend on the weekly chart remains positive till it holds above the previous high swing in the 9500-9532 zones. The dip in the recent rally halted at 20DMA currently placed at 9,510 and will act as a strong support. Nifty has immediate support around 9630 levels and next support is at 9580-9590 immediate resistance around 9710 and next resistance is around 9750. On the option front maximum Put OI is at 9500 followed by 9600 and 9400 strike while maximum Call OI is at 9700 followed by 9800 strike

Technical & Derivative Report

World Indices	LTP	Daily Ch(Pts)	Daily Ch(%)
Dow Jones	21173	37	0.18
Nasdaq	6297	22	0.36
S&P 500	2433	3	0.16
FTSE 100	7478	-46	-0.62
DAX	12672	-17	-0.14
Hang Seng	25954	-19	-0.08
Nikkei	20008	23	0.12
Sensex	31271	80	0.26
Nifty	9663	26	0.28

Commodity /Forex	LTP	Daily Ch(Pts)	Daily Ch(%)
Gold (\$/Oz)	1289.10	-4.10	-0.32
Silver (\$/Oz)	17.57	-0.05	-0.28
Copper(USD/lb.)	254.60	-0.55	-0.22
Brent Crude(USD/bbl)	48.39	0.33	0.69
USD/INR	64.33	-0.09	-0.15
USD/YEN	109.89	0.07	0.06
USD/EUR	1.1250	-0.0007	-0.06

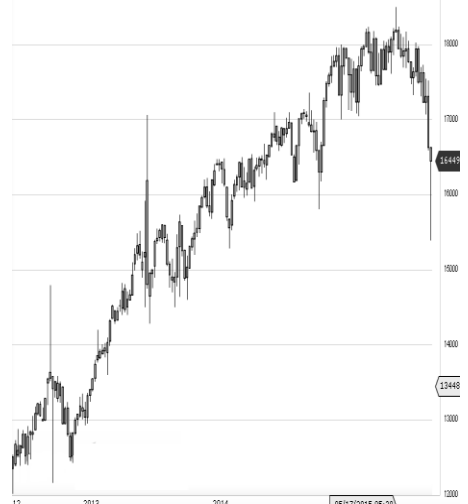
Support/Resistance levels for Indian Equity Indices					
	S1	S2	CMP	R1	R2
Sensex	31160	30990	31271	31430	31560
Nifty	9630	9580	9663	9710	9750
Nifty (Fut)	9645	9595	9679	9725	9765

Pivot Level	
Sensex	31263
Nifty	9657

US: US market closed higher on Wednesday as investors hoped the testimony from former FBI chief James Comey will be less damaging to President Donald Trump than previously feared. Technically DJIA is presently trading at the 5th leg through Elliott wave count with negative divergence in



Increase in OI with Increase in Price (Long Buildup)						Increase in OI with Decrease in Price (Short Buildup)					
Symbol	Prev OI	Curr OI	OI Chg (%)	Curr Pr.	Pr.Chg (%)	Symbol	Prev OI	Curr OI	OI Chg (%)	Curr Pr.	Pr.Chg (%)
CADILA						HEXAW					
HC	2652800	3393600	27.9	535.3	8.6	ARE	2799000	3501000	25.1	245	[5.8]
BERGEP							1224080	1419550			
AINT	932800	1119800	20.1	253.75	0.4	TECHM	0	0	16	402.75	[1.8]
CANFIN						TCS	5443000	6048500	11.1	2578.95	[3.3]
HOME	385000	461000	19.7	2923.35	5.4	MINDTR					
INDIANB	2774000	3260000	17.5	316.9	1.4	EE	3231600	3590400	11.1	538.65	[2.1]
ORIENT	1461000	1634400				SIEMENS	739500	812500	9.9	1350.9	[0.5]
BANK	0	0	11.9	157.8	5.2						



Nifty gained by 0.28% with Nifty future added 4.7 lakh shares in open interest and stock future shaded 46.8 Lakh shares in open interest.

- Nifty PCR increased to 1.19 from 1.18
- Total Nifty Calls added 2.8 lakh shares in open interest.
- Total Nifty Puts added 9.7 lakh shares in open interest.
- Maximum open interest (Nifty) in Calls for May series is at 9700 and 9500 put.
- FII's bought net Rs. 73.79 Cr(provisional), while DIIs sold net Rs.166.22 Cr in cash market.
- FII bought net Rs.263.50Cr in F&O
- Securities in Ban Period: DLF, GMRINFRA, IBREALEST, INFIBEAM, JPASSOCIAT & RCOM

Nifty Tracker

PARTICULARS	07/06/2017	06/06/2017	05/06/2017	02/06/2017
Spot	9663.9	9637.15	9675.1	9653.5
% Change in Spot	0.28%	-0.39%	0.22%	0.39%
Nifty(FUT) June	9679.9	9665.75	9685.5	9652.6
Nifty(FUT) June Vol.	79430	74042	75158	74161
Nifty(FUT) June - OI	22029675	21582600	22120650	22149375
Nifty(FUT) July	9699.4	9685.4	9708.05	9672.4
Nifty(FUT) July Vol.	2601	3531	2817	2909
Nifty(FUT) July - OI	1332075	1311525	1198050	1166925

Trade Statistics for 07/06/2017

PARTICULARS	NO. OF CONTRACTS	TURNOVER (RS. CR.)	PUT CALL RATIO
NSE Index Futures	1,47,050	11989	-
NSE Stock Futures	5,85,743	41599	-
NSE Index Options	41,17,108	3,61,695.08	-
NSE Stock Options	3,63,236	26387	0.5
NSE F&O Total Turnover	52,13,137	441,670	0.96
NSE Cash Turnover	-	23,043.68	-
BSE Cash Turnover	-	3,517.38	-
Total Turnover	-	468231	-

FII Corner (F&O)

FII NET BUYING/SELLING & CHANGE IN OPEN INTEREST (Cr. Rupee)						
PARTICULARS	07/06/2017		06/06/2017		05/06/2017	
	Net Buying /Selling	Change In Open interest	Net Buying /Selling	Change In Open interest	Net Buying /Selling	Change In Open interest
Index Future	-106	800	-199	-191	195	-298
Index option	398	1064	95	129	804	1821
Stock Future	-19	387	-146	-835	477	368
Stock option	-10	360	21	210	26	216
Total	263	2611	-229	-688	1502	2107

Market Open Interest

ADDITION/REDUCTION IN MARKET OPEN INTEREST					
Contracts	07/06/2017	06/06/2017	05/06/2017	02/06/2017	01/06/2017
Index Futures	542	-984	209	226	155
Index Options	963	-1222	813	243	690
Stock Futures	8528	5234	6818	-26306	14634
Stock Options	691	621	623	882	1128
F&O Total	10724	3648	8462.79	-24955.41	16607.01

Nifty Option Open Interest Statistics

NIFTY OPTIONS HIGHEST ADDITION IN OPEN INTEREST						
Expiry	Strike	Option Type	Settlement Price	Volume	Open Interest	Change In OI
29-Jun-17	9600	PE	58.1	144094	6156375	503625
29-Jun-17	9400	PE	22.6	89994	6058725	280200
29-Jun-17	9700	PE	95.5	77287	2142750	234525
29-Jun-17	9900	CE	13.6	73422	2818950	144675
29-Jun-17	9650	PE	73.35	15610	612150	137025
29-Jun-17	9550	PE	44.95	8057	528600	129825
29-Jun-17	9800	CE	34.2	107422	4482750	110025
27-Jul-17	9700	PE	135.7	2873	274200	78825
29-Jun-17	10100	CE	2.75	12429	711300	73050
27-Jul-17	9000	PE	16.3	3086	715425	49650

NIFTY OPTIONS HIGHEST REDUCTION IN OPEN INTEREST						
Expiry	Strike	Option Type	Settlement Price	Volume	Open Interest	Change In OI
29-Jun-17	9500	PE	35.75	108699	6442350	-191025
29-Jun-17	9000	PE	5.6	13834	3011100	-144150
29-Jun-17	9300	PE	14.75	49146	3615000	-129300
29-Jun-17	9700	CE	74.25	153085	5107125	-109050
29-Jun-17	9300	CE	389.2	2164	967725	-74175
28-Dec-17	8500	PE	56.7	1384	859000	-52575
29-Jun-17	9100	PE	7.1	9534	1404675	-46650
29-Jun-17	9750	CE	51.45	10763	511275	-41325
29-Jun-17	9500	CE	209.65	8487	2214975	-38850
29-Jun-17	9200	PE	10	25726	3010525	-38325

Stock Option Open Interest Statistics

STOCK OPTIONS WITH HIGHEST ADDITION IN OPEN INTEREST							
Symbol	Expiry	Strike	Option Type	Settl. Price	Volume	Open Interest	Change in OI
SUZLON	29-Jun-17	25	CE	0.1	118	19770000	2850000
ICICIBANK	29-Jun-17	330	CE	5.65	2595	3512500	907500
ADANIENT	29-Jun-17	150	CE	1.95	936	1680000	664000
RECLTD	29-Jun-17	240	CE	0.25	181	1770000	588000
ADANIENT	29-Jun-17	140	CE	3.7	1322	1800000	584000
ADANIENT	29-Jun-17	160	CE	0.95	455	1088000	496000
RELIANCE	29-Jun-17	1260	PE	3.45	1800	1261000	495500
ICICIBANK	29-Jun-17	340	CE	2.8	1403	2185000	445000
ADANIENT	29-Jun-17	130	PE	5.85	316	672000	440000
SBIN	29-Jun-17	275	PE	1.9	454	2115000	408000

STOCK OPTIONS WITH HIGHEST REDUCTION IN OPEN INTEREST							
Symbol	Expiry	Strike	Option Type	Settl. Price	Volume	Open Int.	Change in OI
GMRINFRA	29-Jun-17	15	PE	0.2	50	12240000	-1125000
GMRINFRA	29-Jun-17	20	CE	0.2	69	34110000	-945000
SAIL	29-Jun-17	57.5	PE	2.15	110	2136000	-756000
GMRINFRA	29-Jun-17	22.5	CE	0.05	34	16110000	-675000
ITC	29-Jun-17	310	CE	8.75	495	926400	-564000
GMRINFRA	29-Jun-17	15	CE	1.9	17	5085000	-540000
ICICIBANK	29-Jun-17	320	CE	10.3	2072	1940000	-532500
GMRINFRA	29-Jun-17	17.5	CE	0.5	185	27405000	-450000
GMRINFRA	29-Jun-17	12.5	PE	0.05	9	7650000	-405000
ADANIENT	29-Jun-17	125	CE	10.05	158	648000	-328000

Research Team

Name	Designation	Email ID	Contact No.
Paras Bothra	President Equity Research	paras@ashikagroup.com	+91 22 6611 1704
Krishna Kumar Agarwal	Equity Research Analyst	krishna.a@ashikagroup.com	+91 33 4036 0646
Partha Mazumder	Equity Research Analyst	partha.m@ashikagroup.com	+91 33 4036 0647
Arijit Malakar	Equity Research Analyst	amalakar@ashikagroup.com	+91 33 4036 0644
Kapil Jagasia, CFA	Equity Research Analyst	kapil.j@ashikagroup.com	+91 22 6611 1715
Tirthankar Das	Technical & Derivative Analyst	tirthankar.d@ashikagroup.com	+91 33 4036 0645

Ashika Stock Broking Limited ("ASBL") or Research Entity has started its journey in the year 1994 and is engaged in the business of broking services, depository services, distributor of financial products (Mutual fund, IPO & Bonds). This research report has been prepared and distributed by ASBL in the sole capacity of a Research Analyst (Reg No. INH000000206) of SEBI (Research Analyst) Regulations 2014. ASBL is a wholly owned subsidiary of Ashika Global Securities (P) Ltd., a RBI registered non-deposit taking NBFC Company. Ashika group (details is enumerated on our website www.ashikagroup.com) is an integrated financial service provider inter alia engaged in the business of Investment Banking, Corporate Lending, Commodity Broking, Debt Syndication & Other Advisory Services.

There were no significant and material disciplinary actions against ASBL taken by any regulatory authority during last three years.

Disclosure

ASBL or its associates, its Research Analysts (including their relatives) may have financial interest in the subject company(ies). However, the said financial interest is not limited to having an open stock market position in /acting as advisor to /having a loan transaction with the subject company(ies) apart from registration as clients.

- 1) ASBL or its Research Analysts (including their relatives) do not have any actual / beneficial ownership of 1% or more of securities of the subject company(ies) at the end of the month immediately preceding the date of publication of this report or date of the public appearance. However ASBL's associates may have actual / beneficial ownership of 1% or more of securities of the subject company(ies).
- 2) ASBL or their Research Analysts (including their relatives) do not have any other material conflict of interest at the time of publication of this research report or date of the public appearance. However ASBL's associates might have an actual / potential conflict of interest (other than ownership).
- 3) ASBL or its associates may have received compensation for investment banking, merchant banking, and brokerage services and for other products and services from the subject companies during the preceding 12 months. However, ASBL or its associates or its Research analysts (forming part of Research Desk) have not received any compensation or other benefits from the subject companies or third parties in connection with the research report. Moreover, Research Analysts have not received any compensation from the companies mentioned herein in the past twelve months.
- 4) ASBL or their Research Analysts have not managed or co-managed public offering of securities for the subject company(ies) in the past twelve months. However ASBL's associates may have managed or co-managed public offering of securities for the subject company(ies) in the past twelve months.
- 5) Research Analysts have not served as an officer, director or employee of the companies mentioned in the report.
- 6) Neither ASBL nor its Research Analysts have been engaged in market making activity for the companies mentioned in the report.

Disclaimer

The research recommendation and information herein are solely for the personal information of the authorized recipient and does not construe to be an offer documents or any investment, legal or taxation advice or solicitation of any action based upon it. This report is not for public distribution or use by any person or entity, where such distribution, publication, availability or use would be contrary to law, regulation or subject to any registration or licensing requirement. We will not treat recipients as customer by virtue of their receiving this report. The report is based upon the information obtained from public sources that we consider reliable, but we do not guarantee its accuracy or completeness. ASBL shall not be in anyways responsible for any loss or damage that may arise to any such person from any inadvertent error in the information contained in this report. The recipients of this report should rely on their own investigations.