

Technical Report

Closing Brief

Nifty began the session on a flat note and remained range bound as the session progressed through the day. Trading in a tight range of almost 20 points the Index ended the lacklustre session flat at 8236.05.

Technical Build up

- ❖ Bearish candle with increase in volume
- ❖ Buy crossover in oscillators.
- ❖ Upper band of Bollinger exist at 8313
- ❖ Crucial moving average of 20/50 SMA are at 8122 and 8209
- ❖ 200 SMA trend deciding level exist at 8269

Outlook for the day

Indian Equity market settled flat in a dull session yesterday, tracking mixed domestic data. Sentiment was downbeat from the beginning in reaction to the latest GDP estimates and anxiety ahead of earning season. However, the FM's statement on double digit growth in tax collection figures during April-December 2016 over the corresponding period last year, capped downside in index. On the technical front, Nifty tested its previous major swing highs and cluster of medium term moving averages zone at 8,300 in last session, but couldn't hold on to it due to profit taking as short-term momentum oscillators reached overbought level. Nifty has retraced its previous declining move within a faster time & raises the expectation of an extended upmove towards 8350 Momentum likely to resume once Index is outside the weekly Doji range, until then lackluster action to continue. Breach below 8130 (Low of Weekly Spinning Top) would negate the setup & remains a vital stop for trading longs. On the option front indicative band expanded from 200 points to 400 points; 8000-8400 level. Option activity saw minor addition in 8400 CE & 8000 PE.

Technical & Derivative Report

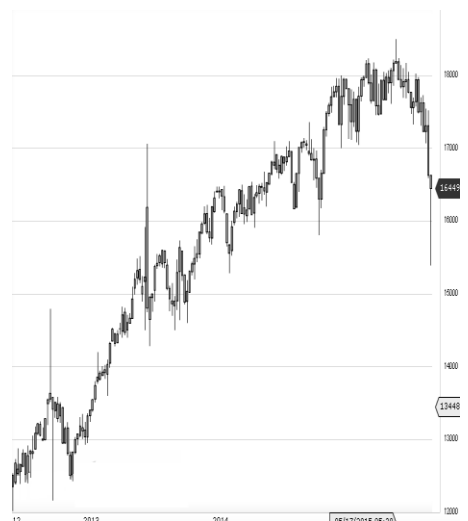
World Indices	LTP	Daily Ch(Pts)	Daily Ch(%)
Dow Jones	19887	-76	-0.38
Nasdaq	5531	10	0.19
S&P 500	2268	-8	-0.35
FTSE 100	7237	27	0.38
DAX	11563	-35	-0.30
Hang Seng	22605	47	0.21
Nikkei	19461	6	0.04
Sensex	26726	-32	-0.12
Nifty	8236	-7	-0.09

Commodity /Forex	LTP	Daily Ch(Pts)	Daily Ch(%)
Gold (\$/Oz)	1181.80	-3.10	-0.26
Silver (\$/Oz)	16.62	-0.07	-0.41
Copper(USD/lb.)	253.50	-0.35	-0.14
Brent Crude(USD/bbl)	54.90	-0.04	-0.07
USD/INR	68.20	0.24	0.36
USD/YEN	116.13	0.10	0.07
USD/EUR	1.0577	0.0003	0.03

Support/Resistance levels for Indian Equity Indices					
	S1	S2	CMP	R1	R2
Sensex	26640	26540	26726	26810	26900
Nifty	8210	8180	8236	8260	8290
Nifty (Fut)	8225	8195	8249	8275	8305

Pivot Level	
Sensex	
Nifty	8242

US: US market closed mixed on Monday, with and utilities lagging, as investors geared up for the start of earnings season and digested falling oil prices. Technically DJIA is presently trading at the 5th leg through Elliot wave count with negative divergence in oscillators.



Increase in OI with Increase in Price (Long Buildup)						Increase in OI with Decrease in Price (Short Buildup)					
Symbol	Prev OI	Curr OI	OI Chg (%)	Curr Pr.	Pr.Chg (%)	Symbol	Prev OI	Curr OI	OI Chg (%)	Curr Pr.	Pr.Chg (%)
BEML	1421	2228	56.8	1149.25	15.1	GRANUL	1721	2190	27.3	101.6	[9.7]
BIOCON	4018	4776	18.9	1015.5	5.5	ES	8107	9929	22.5	735	[0.7]
CONCO						DIVISLA					
R	1686	1839	9.1	1183.9	1.5	B					
STAR	3007	3156	5	1164	5.6	COALIN					
IDBI	3002	3150	4.9	74.3	4.1	DIA	4643	5303	14.2	297.75	[2.3]
						IDFC	4263	4424	3.8	56	[2.1]
						TATAMT					
						RDVR	7340	7505	2.3	320.25	[0.0]

Nifty declined by 0.09% with Nifty future added 0.9 lakh shares in open interest and stock future shaded 343.4 Lakh shares in open interest.

- Nifty PCR remained unchanged at 1.10
- Total Nifty Calls added 12.8 lakh shares in open interest.
- Total Nifty Puts added 14.2 lakh shares in open interest.
- Maximum open interest (Nifty) in Calls for Jan series is at 8400 and 8000 put.
- FII's sold net Rs.325.1 Cr(provisional), while DIIs bought net Rs.96.82 Cr in cash market.
- FII bought net Rs.258.14 Cr in F&O
- Securities in Ban Period: WOCKPHARMA

Nifty Tracker

PARTICULARS	07/01/2017	06/01/2017	05/01/2017	04/01/2017
Spot	8236.05	8243.8	8273.8	8190.5
% Change in Spot	-0.09%	-0.36%	1.02%	-0.02%
Nifty(FUT) Jan	8249.9	8267.65	8288.2	8204.05
Nifty(FUT) Jan Vol.	62644	111583	143845	90638
Nifty(FUT) Jan - OI	18707775	18727275	18773775	17529225
Nifty(FUT) Feb	8277.05	8293.75	8312.95	8229.7
Nifty(FUT) Feb Vol.	4102	6052	6235	3558
Nifty(FUT) Feb - OI	1307775	1222725	1165275	1054200

Trade Statistics for 07/01/2017

PARTICULARS	NO. OF CONTRACTS	TURNOVER (RS. CR.)	PUT CALL RATIO
NSE Index Futures	1,13,423	7531	-
NSE Stock Futures	3,87,970	25132	-
NSE Index Options	20,64,248	1,40,951.64	-
NSE Stock Options	2,19,314	14818	0.53
NSE F&O Total Turnover	27,84,955	188,433	0.97
NSE Cash Turnover	-	14,510.43	-
BSE Cash Turnover	-	2768.64	-
Total Turnover	-	205712	-

FII Corner (F&O)

FII NET BUYING/SELLING & CHANGE IN OPEN INTEREST (Cr. Rupee)						
PARTICULARS	07/01/2017		06/01/2017		05/01/2017	
	Net Buying /Selling	Change In Open interest	Net Buying /Selling	Change In Open interest	Net Buying /Selling	Change In Open interest
Index Future	-173	-171	510	631	1674	1884
Index option	572	1015	831	2074	1541	2136
Stock Future	-141	149	169	-192	348	1095
Stock option	1	401	-19	307	-54	431
Total	259	1394	1491	2821	3509	5546

Market Open Interest

ADDITION/REDUCTION IN MARKET OPEN INTEREST					
Contracts	07/01/2017	06/01/2017	05/01/2017	04/01/2017	03/01/2017
Index Futures	42	-253	936	783	20
Index Options	858	-353	1379	745	569
Stock Futures	5533	-16042	12021	8420	5449
Stock Options	1251	1029	1171	1635	1524
F&O Total	7684	-15618	15506.08	11583.41	7562.75

Nifty Option Open Interest Statistics

NIFTY OPTIONS HIGHEST ADDITION IN OPEN INTEREST						
Expiry	Strike	Option Type	Settlement Price	Volume	Open Interest	Change In OI
25-Jan-17	8000	PE	27.1	61965	6678525	407325
25-Jan-17	8400	CE	31.7	76489	5130825	313200
25-Jan-17	8300	CE	66.15	108670	4245375	171150
25-Jan-17	8500	CE	13.25	72945	3836925	146625
23-Feb-17	8700	CE	27.25	4642	839100	120900
25-Jan-17	8700	CE	2.45	18959	1708275	116400
25-Jan-17	8300	PE	115.05	61658	2661525	113775
23-Feb-17	8300	PE	181.1	3395	330150	107250
23-Feb-17	8000	PE	81.1	5898	1381050	99000
23-Feb-17	9000	PE	710.45	1467	373050	98850

NIFTY OPTIONS HIGHEST REDUCTION IN OPEN INTEREST						
Expiry	Strike	Option Type	Settlement Price	Volume	Open Interest	Change In OI
25-Jan-17	9000	PE	744.55	2234	1748325	-125625
25-Jan-17	8900	PE	646.5	1224	450675	-79500
25-Jan-17	7700	PE	5.95	16021	2521350	-76725
25-Jan-17	7900	CE	361.8	1872	676275	-72525
25-Jan-17	8100	CE	189.8	6491	2160900	-65625
25-Jan-17	8700	PE	447.15	1508	565200	-61275
25-Jan-17	8800	PE	545.45	1065	879525	-55350
25-Jan-17	8600	PE	351.4	2189	473550	-49275
25-Jan-17	8000	CE	273.05	3335	2056425	-46050
25-Jan-17	9000	CE	0.9	6080	1843200	-40725

Stock Option Open Interest Statistics

STOCK OPTIONS WITH HIGHEST ADDITION IN OPEN INTEREST							
Symbol	Expiry	Strike	Option Type	Settl. Price	Volume	Open Interest	Change in OI
JPASSOCIAT	25-Jan-17	12.5	CE	0.2	444	29784000	5576000
TV18BRDCST	25-Jan-17	40	CE	0.7	204	3842000	1547000
RCOM	25-Jan-17	35	CE	0.6	248	7992000	1260000
JPASSOCIAT	25-Jan-17	15	CE	0.05	76	26724000	1224000
JPASSOCIAT	25-Jan-17	10	PE	0.3	204	9588000	1020000
ICICIBANK	25-Jan-17	275	CE	1.15	650	1310000	807500
NHPC	25-Jan-17	30	CE	0.1	53	5184000	729000
IDEA	25-Jan-17	75	CE	1.7	296	2450000	700000
SINTEX	25-Jan-17	90	CE	1.1	404	1446375	684000
DLF	25-Jan-17	130	CE	3.3	968	3515000	655000

STOCK OPTIONS WITH HIGHEST REDUCTION IN OPEN INTEREST							
Symbol	Expiry	Strike	Option Type	Settl. Price	Volume	Open Int.	Change in OI
JPASSOCIAT	25-Jan-17	10	CE	0.95	295	18156000	-476000
DLF	25-Jan-17	125	CE	5.75	383	1880000	-290000
DHFL	25-Jan-17	250	CE	11.7	471	597000	-255000
VEDL	25-Jan-17	255	CE	1.1	230	294000	-217000
DLF	25-Jan-17	125	PE	4.1	565	1645000	-215000
IDBI	25-Jan-17	70	CE	5.1	83	768000	-184000
SOUTHBANK	25-Jan-17	20	CE	1.4	33	1890000	-180000
DLF	25-Jan-17	110	PE	0.8	332	3710000	-145000
IFCI	25-Jan-17	27.5	CE	1.4	125	4994000	-132000
PNB	25-Jan-17	145	CE	0.15	41	756000	-119000

Research Team

Name	Designation	Email ID	Contact No.
Paras Bothra	President Equity Research	paras@ashikagroup.com	+91 22 6611 1704
Krishna Kumar Agarwal	Equity Research Analyst	krishna.a@ashikagroup.com	+91 33 4036 0646
Partha Mazumder	Equity Research Analyst	partha.m@ashikagroup.com	+91 33 4036 0647
Arijit Malakar	Equity Research Analyst	amalakar@ashikagroup.com	+91 33 4036 0644
Kapil Jagasia, CFA	Equity Research Analyst	kapil.j@ashikagroup.com	+91 22 6611 1715
Tirthankar Das	Technical & Derivative Analyst	tirthankar.d@ashikagroup.com	+91 33 4036 0645

SEBI Registration No. INH000000206

Disclosure

The Research Analysts and /or Ashika Stock Broking Limited do hereby certify that all the views expressed in this research report accurately reflect their views about the subject issuer(s) or securities. Moreover, they also certify the followings:-

- The Research Analyst or Ashika Stock Broking Limited or his/its Associates or his/its relative, has any financial interest in the subject company (ies) covered in this report. **Yes**
- The Research Analyst or Ashika Stock Broking Limited or his/its Associates or his/its relative, have actual/beneficial ownership of 1% or more in the subject company, at the end of the month immediately preceding the date of the publication of the research report. **No**
- The Research Analyst or Ashika Stock Broking Limited or his/its Associates or his/its relatives has any material conflict of interest at the time of publication of the research report. **No**
- The Research Analyst or Ashika Stock Broking Limited or his/its Associates have received compensation for investment banking or merchant banking or brokerage services or for product other than for investment banking or merchant banking or brokerage services from the companies covered in this report in the past 12 months. **No**
- The Research Analyst or Ashika Stock Broking Limited or his/its Associates have managed or co managed in the previous 12 months any private or public offering of securities for the company (ies) covered in this report. **No**
- The Research Analyst or Ashika Stock Broking Limited or his/its Associates have received any compensation or other benefits from the company (ies) covered in this report or any third party in connection with the Research Report. **No**
- The Research Analyst has served as an officer, director or employee of the company (ies) covered in the research report. **No**
- The Research Analyst or Ashika Stock Broking Limited has been engaged in Market making activity of the company (ies) covered in the research report. **No**

Disclaimer

This report is for the personal information of the authorized recipient and does not construe to be any investment, legal or taxation advice to you. Ashika Stock Broking Ltd. is not soliciting any action based upon it. This report is not for public distribution and has been furnished to you solely for your information and should not be reproduced or redistributed to any other person in any form. The report is based upon information that we consider reliable, but we do not represent that it is accurate or complete, and it should not be relied upon such. Ashika Stock Broking Ltd. or any of its affiliates or employees shall not be in anyway responsible for any loss or damage that may arise to any person from any inadvertent error in the information contained in this report. Ashika Stock Broking Ltd., or any of its affiliates or employees do not provide, at any time, any express or implied warranty of any kind, regarding any matter pertaining to this report, including without limitation the implied warranties of merchantability, fitness for a particular purpose, and non-infringement. The recipients of this report should rely on their own investigations.