

Technical Report

Closing Brief

Market witnessed it's most volatile session, a second after the UK referendum earlier this year. Nifty closed with cuts of 1.31% to end the day at 8432 post a gap down opening of nearly 500 points.

Technical Build up

- ❖ Bullish candle with increase in volume
- ❖ Sell crossover in oscillators.
- ❖ Lower band of Bollinger exist at 8424
- ❖ Crucial moving average of 20/50 SMA are at 8593 and 8690
- ❖ 200 SMA trend deciding level exist at 8106

Outlook for the day

Indian Equity market remained volatile and ended lower, on the historic day of US Presidential election result. In line with global counterparts, Nifty opened with a sharp cut, tracking exit polls results. Sentiments also took a hit with sudden announcement of demonetisation of larger bank notes by the government. Market soon recovered sharply from day's lows on Wednesday amid the victory of Donald Trump in US presidential elections. On the technical front, Nifty bounced back from the lower band of short-term falling channel encompassing the current decline placed around 8400 region. The placement of short-term stochastic at multimonth lows suggests that market is oversold followed by 200dma and the 50% retracement around the support zone of 7900-8100. The current decline would offers incremental buying opportunity from medium term perspective. Sustaining above 8520 could keep it gyrating within the channel range. On the F&O front increase in OI followed by decrease in price indicates short buildup while on the option front data shows both unwinding of put option of strike price 8400 & 8500.

Technical & Derivative Report

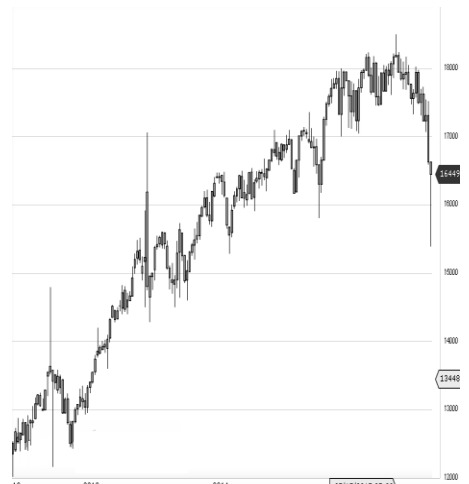
World Indices	LTP	Daily Ch(Pts)	Daily Ch(%)
Dow Jones	18589	256	1.40
Nasdaq	5251	57	1.11
S&P 500	2163	23	1.11
FTSE 100	6911	68	1.00
DAX	10646	163	1.56
Hang Seng	22820	405	1.81
Nikkei	17190	939	5.81
Sensex	27252	-338	-1.23
Nifty	8432	-111	-1.31

Commodity /Forex	LTP	Daily Ch(Pts)	Daily Ch(%)
Gold (\$/Oz)	1285.30	12.30	0.97
Silver (\$/Oz)	18.56	0.18	0.99
Copper(USD/lb.)	253.15	7.20	2.93
Brent Crude(USD/bbl)	46.20	-0.16	-0.35
USD/INR	66.43	-0.18	-0.28
USD/YEN	105.25	-0.42	-0.40
USD/EUR	1.0937	0.0027	0.25

Support/Resistance levels for Indian Equity Indices					
	S1	S2	CMP	R1	R2
Sensex	26810	26610	27252	27810	28040
Nifty	8300	8240	8432	8600	8670
Nifty (Fut)	8330	8270	8462	8630	8700

Pivot Level	
Sensex	26850
Nifty	8303

US: US market surged more than 1 percent Wednesday with financials and health care leading after Republican Donald Trump won the presidential election, defying market expectations for a Hillary Clinton win. Technically DJIA is presently trading at the 5th leg through Elliot wave count with negative divergence in oscillators.



Increase in OI with Increase in Price (Long Buildup)						Increase in OI with Decrease in Price (Short Buildup)					
Symbol	Prev OI	Curr OI	OI Chg (%)	Curr Pr.	Pr.Chg (%)	Symbol	Prev OI	Curr OI	OI Chg (%)	Curr Pr.	Pr.Chg (%)
CANBK	3462	3950	14.1	299.3	0.5	DHFL	4100	5162	25.9	282.1	[10.3]
PNB	5522	6126	10.9	142.8	1.2	DCBBAN					
SBIN	17790	19643	10.4	260.15	2.7	K	393	483	22.9	123.35	[5.0]
DABUR	4128	4510	9.3	298	0.3	HEROM					
POWER						OTOCO	5510	6564	19.1	3240	[4.1]
GRID	4221	4580	8.5	179.8	1.3	MARUTI	11460	13635	19	5440	[4.4]
						TITAN	7517	8885	18.2	342.1	[8.0]

Nifty declined by 1.31% with Nifty future added 8.1 lakh shares in open interest and stock future shaded 983.3 Lakh shares in open interest.

- Nifty PCR increased to 0.98 from 0.96
- Total Nifty Calls added 7.4 lakh shares in open interest.
- Total Nifty Puts added 20.3 lakh shares in open interest.
- Maximum open interest (Nifty) in Calls for Oct series is at 9000 and 8200 put.
- FII's sold net Rs.2095 Cr(provisional), while DIIs bought net Rs.1116.31 Cr in cash market.
- FII bought net Rs.1800.19 Cr in F&O
- Securities in Ban Period: DISHTV, IBREALEST & JINDALSTEL

Nifty Tracker

PARTICULARS	09/11/2016	08/11/2016	07/11/2016	04/11/2016
Spot	8432	8543.55	8497.05	8433.75
% Change in Spot	-1.31%	0.55%	0.75%	-0.60%
Nifty(FUT) Nov	8462.7	8566.55	8520	8458.2
Nifty(FUT) Nov Vol.	457804	116708	112007	166025
Nifty(FUT) Nov - OI	16679925	16022775	16080075	17247225
Nifty(FUT) Dec	8515.95	8615.55	8567	8509.9
Nifty(FUT) Dec Vol.	24189	3704	3947	5676
Nifty(FUT) Dec - OI	1249350	1135200	1124325	1098375

Trade Statistics for 09/11/2016

PARTICULARS	NO. OF CONTRACTS	TURNOVER (RS. CR.)	PUT CALL RATIO
NSE Index Futures	6,90,315	45828	-
NSE Stock Futures	8,86,518	56710	-
NSE Index Options	93,65,679	6,37,462.45	-
NSE Stock Options	6,27,577	42684	0.53
NSE F&O Total Turnover	1,15,70,089	782,684	0.9
NSE Cash Turnover	-	34,053.83	-
BSE Cash Turnover	-	5465.9	-
Total Turnover	-	822204	-

FII Corner (F&O)

FII NET BUYING/SELLING & CHANGE IN OPEN INTEREST (Cr. Rupee)						
PARTICULARS	09/11/2016		08/11/2016		07/11/2016	
	Net Buying /Selling	Change In Open interest	Net Buying /Selling	Change In Open interest	Net Buying /Selling	Change In Open interest
Index Future	709	421	-302	81	-236	-1179
Index option	461	2786	-797	3424	-344	1117
Stock Future	770	-766	546	43	953	263
Stock option	-139	412	-8	513	-33	371
Total	1801	2853	-561	4061	340	572

Market Open Interest

ADDITION/REDUCTION IN MARKET OPEN INTEREST					
Contracts	09/11/2016	08/11/2016	07/11/2016	04/11/2016	03/11/2016
Index Futures	892	-73	-1046	229	-148
Index Options	-2569	-67	523	-1244	-597
Stock Futures	2350	10973	3966	-16079	15006
Stock Options	531	1136	1128	1971	1818
F&O Total	1205	11968	4570.95	-15123.11	16078.59

Nifty Option Open Interest Statistics

NIFTY OPTIONS HIGHEST ADDITION IN OPEN INTEREST						
Expiry	Strike	Option Type	Settlement Price	Volume	Open Interest	Change In OI
24-Nov-16	8000	PE	19.95	381822	4414275	1393275
24-Nov-16	8300	CE	215	216955	2329575	1128300
24-Nov-16	7800	PE	11.15	164812	2306250	945150
24-Nov-16	8200	CE	303.65	116226	1564275	606600
24-Nov-16	7700	PE	7.9	87435	1210875	585225
24-Nov-16	8200	PE	38.4	507226	5654025	537975
24-Nov-16	7500	PE	4.6	67738	1271325	441525
24-Nov-16	8500	CE	87.55	470172	3048300	375150
24-Nov-16	8400	CE	140.35	338107	1938075	366900
24-Nov-16	7600	PE	5.85	60590	728775	252975

NIFTY OPTIONS HIGHEST REDUCTION IN OPEN INTEREST						
Expiry	Strike	Option Type	Settlement Price	Volume	Open Interest	Change In OI
24-Nov-16	8500	PE	123.65	145727	3222300	-1461450
24-Nov-16	8400	PE	83.7	289549	4045875	-839325
24-Nov-16	8600	PE	181.85	41364	1741350	-546150
24-Nov-16	8700	CE	23.2	383257	3807675	-538950
24-Nov-16	8800	CE	11.3	228923	3950550	-496125
24-Nov-16	9000	CE	3.55	140005	5859675	-400200
24-Nov-16	9200	CE	1.55	12732	1581525	-320625
29-Dec-16	8900	CE	37.05	26750	645525	-297225
29-Dec-16	8500	PE	167.4	13636	1907925	-201750
24-Nov-16	8900	CE	5.75	168629	3404175	-168000

Stock Option Open Interest Statistics

STOCK OPTIONS WITH HIGHEST ADDITION IN OPEN INTEREST							
Symbol	Expiry	Strike	Option Type	Settl. Price	Volume	Open Interest	Change in OI
RCOM	24-Nov-16	45	CE	0.8	1044	3680000	2100000
JPASSOCIAT	24-Nov-16	10	CE	0.25	180	6732000	1768000
DLF	24-Nov-16	120	CE	6.5	1238	1735000	1735000
DLF	24-Nov-16	130	CE	3.05	1446	1735000	1700000
SOUTHBANK	24-Nov-16	27.5	CE	0.05	56	2760000	1560000
HDIL	24-Nov-16	70	CE	1.4	727	1616000	1552000
DLF	24-Nov-16	140	CE	1.5	1883	2285000	1550000
GMRINFRA	24-Nov-16	12.5	CE	0.35	452	7785000	1440000
SAIL	24-Nov-16	50	CE	1.7	1125	3600000	1428000
RCOM	24-Nov-16	42.5	CE	1.6	621	1420000	1350000

STOCK OPTIONS WITH HIGHEST REDUCTION IN OPEN INTEREST							
Symbol	Expiry	Strike	Option Type	Settl. Price	Volume	Open Int.	Change in OI
ICICIBANK	24-Nov-16	270	CE	17.35	4591	1125000	-2787500
ICICIBANK	24-Nov-16	270	PE	5.1	4754	1610000	-1725000
SBIN	24-Nov-16	220	PE	0.7	1620	906000	-945000
RCOM	24-Nov-16	47.5	CE	0.35	442	3590000	-720000
IBREALEST	24-Nov-16	110	CE	0.05	71	990000	-710000
ASHOKLEY	24-Nov-16	90	PE	2.25	629	1771000	-707000
ICICIBANK	24-Nov-16	260	PE	2.7	4259	2655000	-697500
GMRINFRA	29-Dec-16	12.5	CE	0.7	19	180000	-675000
HINDALCO	24-Nov-16	160	PE	5.2	891	1190000	-672000
BHEL	24-Nov-16	140	PE	5.6	321	865000	-635000

Name	Designation	Email ID	Contact No.
Paras Bothra	President Equity Research	paras@ashikagroup.com	+91 22 6611 1704
Krishna Kumar Agarwal	Equity Research Analyst	krishna.a@ashikagroup.com	+91 33 4036 0646
Partha Mazumder	Equity Research Analyst	partha.m@ashikagroup.com	+91 33 4036 0647
Arijit Malakar	Equity Research Analyst	amalakar@ashikagroup.com	+91 33 4036 0644
Chanchal Bachhawat	Equity Research Analyst	chanchal.bachhawat@ashikagroup.com	+91 22 6611 1712
Tirthankar Das	Technical & Derivative Analyst	tirthankar.d@ashikagroup.com	+91 33 4036 0645

SEBI Registration No. INH000000206

Disclosure

The Research Analysts and /or Ashika Stock Broking Limited do hereby certify that all the views expressed in this research report accurately reflect their views about the subject issuer(s) or securities. Moreover, they also certify the followings:-

- The Research Analyst or Ashika Stock Broking Limited or his/its Associates or his/its relative, has any financial interest in the subject company (ies) covered in this report. **Yes**
- The Research Analyst or Ashika Stock Broking Limited or his/its Associates or his/its relative, have actual/beneficial ownership of 1% or more in the subject company, at the end of the month immediately preceding the date of the publication of the research report. **No**
- The Research Analyst or Ashika Stock Broking Limited or his/its Associates or his/its relatives has any material conflict of interest at the time of publication of the research report. **No**
- The Research Analyst or Ashika Stock Broking Limited or his/its Associates have received any compensation or compensation for investment banking or merchant banking or brokerage services or for product other than for investment banking or merchant banking or brokerage services from the companies covered in this report in the past 12 months. **No**
- The Research Analyst or Ashika Stock Broking Limited or his/its Associates have managed or co managed in the previous 12 months any private or public offering of securities for the company (ies) covered in this report. **No**
- The Research Analyst or Ashika Stock Broking Limited or his/its Associates have received any compensation or other benefits from the company (ies) covered in this report or any third party in connection with the Research Report. **No**
- The Research Analyst has served as an officer, director or employee of the company (ies) covered in the research report. **No**
- The Research Analyst or Ashika Stock Broking Limited has been engaged in Market making activity of the company (ies) covered in the research report. **No**

Disclaimer

This report is for the personal information of the authorized recipient and does not construe to be any investment, legal or taxation advice to you. Ashika Stock Broking Ltd. is not soliciting any action based upon it. This report is not for public distribution and has been furnished to you solely for your information and should not be reproduced or redistributed to any other person in any form. The report is based upon information that we consider reliable, but we do not represent that it is accurate or complete, and it should not be relied upon such. Ashika Stock Broking Ltd. or any of its affiliates or employees shall not be in anyway responsible for any loss or damage that may arise to any person from any inadvertent error in the information contained in this report. Ashika Stock Broking Ltd. or any of its affiliates or employees do not provide at any time, any express or implied