

# Technical Report

## Closing Brief

Benchmark indices extended the losses for the fourth consecutive trading session as the losses were being led by pharma, auto and banking stocks. Nifty finally ended at 9820.25 levels down by -87.80 points or -0.89%

## Technical Build up

- ❖ Bearish candle with increase in volume
- ❖ Sell crossover in oscillators.
- ❖ Lower band of Bollinger exist at 9807
- ❖ Crucial moving average of 20/50 SMA are at 9972 and 9773
- ❖ 200 SMA trend deciding level exist at 8998

## Outlook for the day

Indian Equity market remained under pressure for the fourth successive session and lost over half a percent, citing lingering geo-political issues and feeble local cues. Nifty fell to day's low of 9776 on account of panic selling and margin pressure. On the technical front, Nifty formed a bearish candle for the fourth consecutive day in a row and a convincing breach of 50-DMA in the next few sessions could lead to further downside in the markets. It has been making lower highs - lower lows on the daily chart and corrected by around 360 points from its life time high of 10137 to 9776 in last few trading sessions. In addition, the RSI on daily chart has now even slipped below the 50 mark, providing impetus for further weakness. Going ahead immediate support is placed around 9750 levels and the next support is placed around 9700 levels and on the higher side the immediate resistance is placed around 9900 levels and the next resistance is placed around 9950 levels. On the option front maximum Put OI is at 9800 followed by 9900 while maximum Call OI is at 10100 followed by 10000 strike

## Technical & Derivative Report

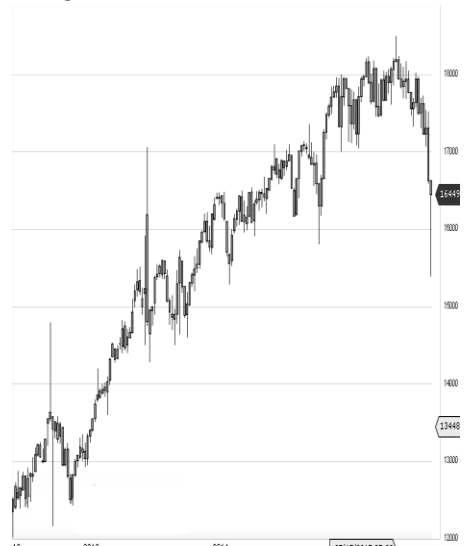
World Indices	LTP	Daily Ch(Pts)	Daily Ch(%)
Dow Jones	21844	-204	-0.93
Nasdaq	6216	-135	-2.13
S&P 500	2438	-35	-1.45
FTSE 100	7389	-108	-1.44
DAX	12014	-139	-1.15
Hang Seng	27114	-329	-1.20
Nikkei	19729	-8	-0.05
Sensex	31531	-266	-0.84
Nifty	9820	-87	-0.89

Commodity /Forex	LTP	Daily Ch(Pts)	Daily Ch(%)
Gold (\$/Oz)	1291.50	1.40	0.11
Silver (\$/Oz)	17.11	0.04	0.23
Copper(USD/lb.)	288.20	-2.10	-0.72
Brent Crude(USD/bbl)	51.76	-0.14	-0.27
USD/INR	64.08	0.24	0.38
USD/YEN	109.10	-0.10	-0.09
USD/EUR	1.1770	-0.0002	-0.02

Support/Resistance levels for Indian Equity Indices					
	S1	S2	CMP	R1	R2
Sensex	31300	31130	31531	31800	31960
Nifty	9750	9700	9820	9900	9950
Nifty (Fut)	9785	9735	9854	9935	9985

Pivot Level		
Sensex		31570
Nifty		9829

**US:** US market fell the most since May on Thursday as tensions between the United States and North Korea persisted. Technically DJIA is presently trading at the 5th leg through Elliot wave count with negative divergence in oscillators.



Increase in OI with Increase in Price (Long Buildup)						Increase in OI with Decrease in Price (Short Buildup)					
Symbol	Prev OI	Curr OI	OI Chg (%)	Curr Pr.	Pr.Chg (%)	Symbol	Prev OI	Curr OI	OI Chg (%)	Curr Pr.	Pr.Chg (%)
BRITAN						CHOLAF					
NIA	387000	448600	15.9	4122	1.4	IN	319500	359500	12.5	1160.6	[1.1]
PIDILITI						MOTHE					
ND	960000	1083000	12.8	791.05	0.1	RSUMI	6888750	7653750	11.1	317.95	[3.3]
TATAPO	2545200	2680200					3230000	3548000			
WER	0	0	5.3	77.45	0.9	BHEL	0	0	9.9	127.25	[4.0]
PETRON	1302300	1369500				PAGEIN					
ET	0	0	5.2	211.1	1.7	D	35850	38750	8.1	16274.6	[2.7]
BHARTI	3061530	3207560				SUNPHA	3578560	3818240			
ARTL	0	0	4.8	419	0.2	RMA	0	0	6.7	461.5	[2.9]

Nifty declined by 0.89% with Nifty future shaded 7.2 lakh shares in open interest and stock future shaded 1294.1 Lakh shares in open interest.

- Nifty PCR decreased to 1.09 from 1.13
- Total Nifty Calls added 32.3 lakh shares in open interest.
- Total Nifty Puts added 9.1 lakh shares in open interest.
- Maximum open interest (Nifty) in Calls for July series is at 10100 and 9800 put.
- FII's sold net Rs.1171.21 Cr(provisional), while DIIs bought net Rs.821.72 Cr in cash market.
- FII bought net Rs.3038.76 Cr in F&O
- Securities in Ban Period: DLF, FORTIS, IBREALEST, JINDALSTEL, JISJALEQS & JSWENERGY

## Nifty Tracker

PARTICULARS	10/08/2017	09/08/2017	08/08/2017	07/08/2017
Spot	9820.25	9908.05	9978.55	10057.4
% Change in Spot	-0.89%	-0.71%	-0.78%	-0.09%
Nifty(FUT) Aug	9854.75	9926.7	9999.45	10091.75
Nifty(FUT) Aug Vol.	141549	118624	148356	50737
Nifty(FUT) Aug - OI	22531950	23268000	22978575	21703650
Nifty(FUT) Sep	9885.9	9959.65	10031.8	10128
Nifty(FUT) Sep Vol.	5680	4960	4468	1205
Nifty(FUT) Sep - OI	1296525	1298250	1285050	1185825

## Trade Statistics for 10/08/2017

PARTICULARS	NO. OF CONTRACTS	TURNOVER (RS. CR.)	PUT CALL RATIO
NSE Index Futures	2,08,570	17526	-
NSE Stock Futures	7,20,028	53734	-
NSE Index Options	67,59,474	6,22,651.00	-
NSE Stock Options	4,98,121	39320	0.55
NSE F&O Total Turnover	81,86,193	733,230	0.83
NSE Cash Turnover	-	25,684.76	-
BSE Cash Turnover	-	3,608.13	-
Total Turnover	-	762523	-

## FII Corner (F&O)

FII NET BUYING/SELLING & CHANGE IN OPEN INTEREST (Cr. Rupee)						
PARTICULARS	10/08/2017		09/08/2017		08/08/2017	
	Net Buying /Selling	Change In Open interest	Net Buying /Selling	Change In Open interest	Net Buying /Selling	Change In Open interest
Index Future	471	748	420	-93	-417	661
Index option	2456	409	1500	3819	1286	2245
Stock Future	359	-1112	151	-354	26	-596
Stock option	-247	326	-117	306	69	794
Total	3039	370	1954	3678	964	3104

## Market Open Interest

ADDITION/REDUCTION IN MARKET OPEN INTEREST					
Contracts	10/08/2017	09/08/2017	08/08/2017	07/08/2017	04/08/2017
Index Futures	-1443	-237	1669	349	-361
Index Options	-5541	-1502	-791	1590	1274
Stock Futures	13617	10952	11007	7998	-32544
Stock Options	328	1421	1206	977	1329
F&O Total	6961	10634	13091.61	10914.33	-30301.58

## Nifty Option Open Interest Statistics

NIFTY OPTIONS HIGHEST ADDITION IN OPEN INTEREST						
Expiry	Strike	Option Type	Settlement Price	Volume	Open Interest	Change In OI
31-Aug-17	9900	CE	86.55	191868	3251400	1171275
31-Aug-17	10000	CE	48.65	241525	5116650	1035150
31-Aug-17	9400	PE	20.65	57070	2834700	727275
31-Aug-17	9000	PE	7.7	26548	2137275	492975
28-Sep-17	8500	CE	1392.85	5180	468000	377250
31-Aug-17	9500	PE	29.4	80425	3692475	370800
31-Aug-17	9800	CE	140.75	45977	1544850	357900
31-Aug-17	9600	PE	41.6	101437	2522700	302325
31-Aug-17	10200	CE	12	161658	4880100	238800
31-Aug-17	9850	CE	111.5	12761	234150	178275

NIFTY OPTIONS HIGHEST REDUCTION IN OPEN INTEREST						
Expiry	Strike	Option Type	Settlement Price	Volume	Open Interest	Change In OI
31-Aug-17	10000	PE	185.55	86002	3310275	-761850
31-Aug-17	8500	CE	1335.9	5447	923400	-363000
31-Aug-17	9700	PE	59.8	159588	3438375	-264375
31-Aug-17	9800	PE	88.85	217553	4620525	-217650
31-Aug-17	10100	PE	262.9	17267	1504725	-198450
31-Aug-17	10500	CE	2.45	31389	3936075	-194850
31-Aug-17	8400	CE	1432	2162	432000	-161175
31-Aug-17	9900	PE	128.65	178633	3724200	-144375
28-Sep-17	10300	CE	32.15	11422	423150	-129750
31-Aug-17	10400	CE	3.55	39548	2946750	-106950

## Stock Option Open Interest Statistics

STOCK OPTIONS WITH HIGHEST ADDITION IN OPEN INTEREST							
Symbol	Expiry	Strike	Option Type	Settl. Price	Volume	Open Interest	Change in OI
GMRINFRA	31-Aug-17	17.5	CE	0.4	491	10710000	4140000
SOUTHBANK	31-Aug-17	27.5	CE	0.9	172	3744933	3214677
SUZLON	31-Aug-17	17.5	CE	0.35	1373	28590000	3150000
IFCI	31-Aug-17	25	CE	0.45	368	3916000	2618000
RCOM	31-Aug-17	20	CE	1.95	239	2618000	2534000
TATAMOTORS	31-Aug-17	400	CE	6.6	7196	2388000	2319000
SOUTHBANK	31-Aug-17	30	CE	0.3	265	7788135	1922178
GMRINFRA	31-Aug-17	20	CE	0.15	261	25065000	1890000
TATAMOTORS	31-Aug-17	420	CE	2.8	4751	2197500	1695000
SUZLON	31-Aug-17	12.5	PE	0.2	97	1920000	1680000

STOCK OPTIONS WITH HIGHEST REDUCTION IN OPEN INTEREST							
Symbol	Expiry	Strike	Option Type	Settl. Price	Volume	Open Int.	Change in OI
JPASSOCIAT	28-Sep-17	2.5	PE	0.05	24	204000	-1632000
JPASSOCIAT	31-Aug-17	30	CE	0.4	56	9520000	-1564000
JISLJALEQS	31-Aug-17	130	CE	0.2	273	7488000	-1476000
IFCI	31-Aug-17	27.5	CE	0.2	358	6336000	-1364000
RCOM	31-Aug-17	32.5	CE	0.05	82	1470000	-966000
TATAMOTORS	31-Aug-17	460	CE	1	3519	2395500	-906000
SUZLON	31-Aug-17	22.5	CE	0.1	113	28470000	-900000
SUZLON	31-Aug-17	17.5	PE	2.25	132	20940000	-810000
IFCI	31-Aug-17	30	CE	0.1	142	7502000	-726000
FEDERALBNK	31-Aug-17	110	PE	6.6	171	1606000	-627000

## Research Team

Name	Designation	Email ID	Contact No.
Paras Bothra	President Equity Research	paras@ashikagroup.com	+91 22 6611 1704
Sanjeev Jain	AVP Equity Research	sanjeev.j@ashikagroup.com	+91 33 4036 0650
Krishna Kumar Agarwal	Equity Research Analyst	krishna.a@ashikagroup.com	+91 33 4036 0646
Partha Mazumder	Equity Research Analyst	partha.m@ashikagroup.com	+91 33 4036 0647
Arijit Malakar	Equity Research Analyst	amalakar@ashikagroup.com	+91 33 4036 0644
Kapil Jagasia	Equity Research Analyst	kapil.j@ashikagroup.com	+91 22 6611 1715
Tirthankar Das	Technical & Derivative Analyst	tirthankar.d@ashikagroup.com	+91 33 4036 0645

Ashika Stock Broking Limited ("ASBL") or Research Entity has started its journey in the year 1994 and is engaged in the business of broking services, depository services, distributor of financial products (Mutual fund, IPO & Bonds). This research report has been prepared and distributed by ASBL in the sole capacity of a Research Analyst (Reg No. INH00000206) of SEBI (Research Analyst) Regulations 2014. ASBL is a wholly owned subsidiary of Ashika Global Securities (P) Ltd., a RBI registered non-deposit taking NBFC Company. Ashika group (details is enumerated on our website [www.ashikagroup.com](http://www.ashikagroup.com)) is an integrated financial service provider inter alia engaged in the business of Investment Banking, Corporate Lending, Commodity Broking, Debt Syndication & Other Advisory Services.

There were no significant and material disciplinary actions against ASBL taken by any regulatory authority during last three years.

### Disclosure

ASBL or its associates, its Research Analysts (including their relatives) may have financial interest in the subject company(ies). However, the said financial interest is not limited to having an open stock market position in /acting as advisor to /having a loan transaction with the subject company(ies) apart from registration as clients.

- 1) ASBL or its Research Analysts (including their relatives) do not have any actual / beneficial ownership of 1% or more of securities of the subject company(ies) at the end of the month immediately preceding the date of publication of this report or date of the public appearance. However ASBL's associates may have actual / beneficial ownership of 1% or more of securities of the subject company(ies).
- 2) ASBL or their Research Analysts (including their relatives) do not have any other material conflict of interest at the time of publication of this research report or date of the public appearance. However ASBL's associates might have an actual / potential conflict of interest (other than ownership).
- 3) ASBL or its associates may have received compensation for investment banking, merchant banking, and brokerage services and for other products and services from the subject companies during the preceding 12 months. However, ASBL or its associates or its Research analysts (forming part of Research Desk) have not received any compensation or other benefits from the subject companies or third parties in connection with the research report. Moreover, Research Analysts have not received any compensation from the companies mentioned herein in the past twelve months.
- 4) ASBL or their Research Analysts have not managed or co-managed public offering of securities for the subject company(ies) in the past twelve months. However ASBL's associates may have managed or co-managed public offering of securities for the subject company(ies) in the past twelve months.
- 5) Research Analysts have not served as an officer, director or employee of the companies mentioned in the report.
- 6) Neither ASBL nor its Research Analysts have been engaged in market making activity for the companies mentioned in the report.

### Disclaimer

The research recommendation and information herein are solely for the personal information of the authorized recipient and does not construe to be an offer documents or any investment, legal or taxation advice or solicitation of any action based upon it. This report is not for public distribution or use by any person or entity, where such distribution, publication, availability or use would be contrary to law, regulation or subject to any registration or licensing requirement. We will not treat recipients as customer by virtue of their receiving this report. The report is based upon the information obtained from public sources that we consider reliable, but we do not guarantee its accuracy or completeness. ASBL shall not be in anyways responsible for any loss or damage that may arise to any such person from any inadvertent error in the information contained in this report. The recipients of this report should rely on their own investigations.