

Technical Report

Closing Brief

Nifty staged a gap up opening post previous day's sharp rally supported by global cues and came in striking distance of the 8600 mark before it was seen paring its gains through the course of the day. Nifty closed 1.11% higher following previous day's move, just about opening gap, at 8525.75.

Technical Build up

- ❖ Bullish candle with decrease in volume
- ❖ Buy crossover in oscillators.
- ❖ Lower band of Bollinger exist at 8415
- ❖ Crucial moving average of 20/50 SMA are at 8593 and 8688
- ❖ 200 SMA trend deciding level exist at 8111

Outlook for the day

Indian Equity market managed to gain over a percent on Thursday, tracking upbeat global markets. The rally was supported by short covering as well as value buying in banks & metals stocks, and positive global cues. On the technical front, Nifty has retraced 61.8% of the entire fall at 8599 and reversed sharply in the second half on Thursday and closed at the day's lowest levels, which is an indication of over retracement in the short term. Nifty has support between 8460 levels. However, buying is advisable only if Nifty forms the reversal pattern at these levels. Above the level of 8600, it has scope to move up to 8750. A close below 8660 would be negative for the market in the short term. On the F&O front increase in OI followed by increase in price indicates long buildup while on the option front data shows both long buildup in ATM strike price put option of 8500 & 8400

Technical & Derivative Report

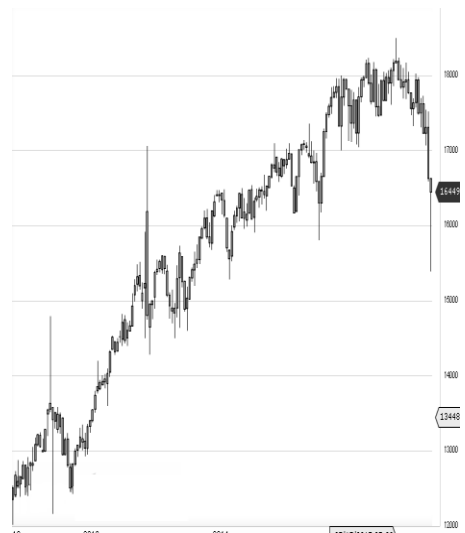
World Indices	LTP	Daily Ch(Pts)	Daily Ch(%)
Dow Jones	18807	218	1.17
Nasdaq	5208	-42	-0.81
S&P 500	2167	4	0.20
FTSE 100	6827	-83	-1.21
DAX	10630	-15	-0.15
Hang Seng	22466	-372	-1.63
Nikkei	17516	172	0.99
Sensex	27517	265	0.97
Nifty	8525	93	1.11

Commodity /Forex	LTP	Daily Ch(Pts)	Daily Ch(%)
Gold (\$/Oz)	1259.30	-7.10	-0.56
Silver (\$/Oz)	18.52	-0.22	-1.18
Copper(USD/lb.)	253.55	-1.55	-0.61
Brent Crude(USD/bbl)	45.66	-0.18	-0.39
USD/INR	66.62	0.19	0.29
USD/YEN	106.71	-0.12	-0.11
USD/EUR	1.0885	-0.0008	-0.07

Support/Resistance levels for Indian Equity Indices					
	S1	S2	CMP	R1	R2
Sensex	27100	26930	27517	27700	27870
Nifty	8400	8350	8525	8580	8630
Nifty (Fut)	8430	8380	8553	8610	8660

Pivot Level	
Sensex	27572
Nifty	8544

US: US market closed mixed on Thursday as investors repositioned their portfolios following the presidential election. Technically DJIA is presently trading at the 5th leg through Elliot wave count with negative divergence in oscillators.



Increase in OI with Increase in Price (Long Buildup)

Symbol	Prev OI	Curr OI	OI Chg (%)	Curr Pr.	Pr.Chg (%)
PNB	5778	6976	20.7	159.75	11.9
TATAST	9047	10861	20.1	438.05	9.2
HAVELL	1915	2267	18.4	379.55	0.8
FEDERA	4366	5103	16.9	80.6	5.3
LBNK	18449	21033	14	282.4	8.3

Increase in OI with Decrease in Price (Short Buildup)

Symbol	Prev OI	Curr OI	OI Chg (%)	Curr Pr.	Pr.Chg (%)
IBULHS					
GFIN	8765	11647	32.9	703	[2.8]
PAGEIN					
D	728	906	24.5	14922.5	[7.3]
BOSCHL					
TD	3858	3912	1.4	20855	[2.4]

Nifty gained by 1.11% with Nifty future added 3.8 lakh shares in open interest and stock future added 306.2 Lakh shares in open interest.

- Nifty PCR remained unchanged at 0.98
- Total Nifty Calls added 9.8 lakh shares in open interest.
- Total Nifty Puts added 9.8 lakh shares in open interest.
- Maximum open interest (Nifty) in Calls for Oct series is at 9000 and 8200 put.
- FII's sold net Rs.733.49 Cr(provisional), while DIIs bought net Rs.639.19 Cr in cash market.
- FII bought net Rs.1976.48 Cr in F&O
- Securities in Ban Period: DISHTV, IBREALEST & JINDALSTEL

Nifty Tracker

PARTICULARS	10/11/2016	09/11/2016	08/11/2016	07/11/2016
Spot	8525.75	8432	8543.55	8497.05
% Change in Spot	1.11%	-1.31%	0.55%	0.75%
Nifty(FUT) Nov	8553.35	8462.7	8566.55	8520
Nifty(FUT) Nov Vol.	185038	457804	116708	112007
Nifty(FUT) Nov - OI	17023275	16679925	16022775	16080075
Nifty(FUT) Dec	8604.95	8515.95	8615.55	8567
Nifty(FUT) Dec Vol.	9538	24189	3704	3947
Nifty(FUT) Dec - OI	1263600	1249350	1135200	1124325

Trade Statistics for 10/11/2016

PARTICULARS	NO. OF CONTRACTS	TURNOVER (RS. CR.)	PUT CALL RATIO
NSE Index Futures	3,45,025	24585	-
NSE Stock Futures	7,14,767	50992	-
NSE Index Options	85,53,607	6,38,251.38	-
NSE Stock Options	5,75,307	42320	0.44
NSE F&O Total Turnover	1,01,88,706	756,148	0.95
NSE Cash Turnover	-	27,195.69	-
BSE Cash Turnover	-	3737.42	-
Total Turnover	-	787082	-

FII Corner (F&O)

FII NET BUYING/SELLING & CHANGE IN OPEN INTEREST (Cr. Rupee)						
PARTICULARS	10/11/2016		09/11/2016		08/11/2016	
	Net Buying /Selling	Change In Open interest	Net Buying /Selling	Change In Open interest	Net Buying /Selling	Change In Open interest
Index Future	205	121	709	421	-302	81
Index option	1261	3294	461	2786	-797	3424
Stock Future	558	1517	770	-766	546	43
Stock option	-47	579	-139	412	-8	513
Total	1977	5511	1801	2853	-561	4061

Market Open Interest

ADDITION/REDUCTION IN MARKET OPEN INTEREST					
Contracts	10/11/2016	09/11/2016	08/11/2016	07/11/2016	04/11/2016
Index Futures	926	892	-73	-1046	229
Index Options	2899	-2569	-67	523	-1244
Stock Futures	14884	2350	10973	3966	-16079
Stock Options	1940	531	1136	1128	1971
F&O Total	20649	1205	11968.34	4570.95	-15123.11

Nifty Option Open Interest Statistics

NIFTY OPTIONS HIGHEST ADDITION IN OPEN INTEREST						
Expiry	Strike	Option Type	Settlement Price	Volume	Open Interest	Change In OI
24-Nov-16	8600	PE	115.8	146515	2780475	1039125
24-Nov-16	8500	PE	71.55	284511	4077000	854700
24-Nov-16	8700	CE	36.35	267019	4460100	652425
29-Dec-16	8400	PE	94.25	24395	1348050	610950
24-Nov-16	8800	CE	16.85	216644	4517475	566925
29-Dec-16	8900	CE	49.85	19275	1176000	530475
24-Nov-16	8400	PE	43	229734	4254150	208275
29-Dec-16	8800	PE	270.7	3800	673125	194100
24-Nov-16	7800	PE	4.55	36201	2496600	190350
29-Dec-16	8800	CE	78.2	15420	983325	183150

NIFTY OPTIONS HIGHEST REDUCTION IN OPEN INTEREST						
Expiry	Strike	Option Type	Settlement Price	Volume	Open Interest	Change In OI
24-Nov-16	8200	PE	17.05	158483	4888050	-765975
24-Nov-16	8300	CE	274.9	18453	1589625	-739950
24-Nov-16	8300	PE	25.9	208002	3400800	-686625
24-Nov-16	8400	CE	193.9	45097	1347450	-590625
24-Nov-16	8500	CE	124.2	143684	2730300	-318000
24-Nov-16	7500	PE	2.2	13799	984750	-286575
24-Nov-16	8800	PE	261.4	11366	1208025	-267150
24-Nov-16	8900	CE	7.85	118293	3138525	-265650
24-Nov-16	8100	PE	11.8	83029	2043900	-247050
24-Nov-16	7600	PE	2.45	11711	530850	-197925

Stock Option Open Interest Statistics

STOCK OPTIONS WITH HIGHEST ADDITION IN OPEN INTEREST							
Symbol	Expiry	Strike	Option Type	Settl. Price	Volume	Open Interest	Change in OI
ICICIBANK	24-Nov-16	290	CE	11.75	6850	10072500	6067500
PNB	24-Nov-16	150	PE	2.6	1010	2695000	2324000
SBIN	24-Nov-16	260	PE	3.1	3040	3702000	1995000
ASHOKLEY	24-Nov-16	95	CE	1.15	1821	8988000	1925000
IFCI	24-Nov-16	27.5	CE	0.2	205	6622000	1870000
BANKINDIA	24-Nov-16	120	CE	8.9	1629	2430000	1764000
ASHOKLEY	24-Nov-16	100	CE	0.5	1556	8813000	1715000
PNB	24-Nov-16	170	CE	2.8	1637	2149000	1701000
BANKINDIA	24-Nov-16	125	CE	6.15	1449	1950000	1614000
ICICIBANK	24-Nov-16	290	PE	8.05	2720	1732500	1495000

STOCK OPTIONS WITH HIGHEST REDUCTION IN OPEN INTEREST							
Symbol	Expiry	Strike	Option Type	Settl. Price	Volume	Open Int.	Change in OI
ICICIBANK	24-Nov-16	280	CE	18	3161	2917500	-3107500
FEDERALBNK	24-Nov-16	80	CE	3.45	611	2464000	-1716000
VEDL	24-Nov-16	220	CE	12.85	1112	1920000	-1476000
SBIN	24-Nov-16	260	CE	25.1	1691	5613000	-1197000
SBIN	24-Nov-16	265	CE	21.2	1546	732000	-1185000
PNB	24-Nov-16	145	CE	16.45	631	931000	-1022000
VEDL	24-Nov-16	225	CE	9.35	758	750000	-1002000
UNIONBANK	24-Nov-16	140	CE	6.75	1630	1268000	-880000
SBIN	24-Nov-16	270	CE	17.75	3351	2733000	-870000
NMDC	24-Nov-16	130	CE	4.7	309	924000	-852000

Name	Designation	Email ID	Contact No.
Paras Bothra	President Equity Research	paras@ashikagroup.com	+91 22 6611 1704
Krishna Kumar Agarwal	Equity Research Analyst	krishna.a@ashikagroup.com	+91 33 4036 0646
Partha Mazumder	Equity Research Analyst	partha.m@ashikagroup.com	+91 33 4036 0647
Arijit Malakar	Equity Research Analyst	amalakar@ashikagroup.com	+91 33 4036 0644
Chanchal Bachhawat	Equity Research Analyst	chanchal.bachhawat@ashikagroup.com	+91 22 6611 1712
Tirthankar Das	Technical & Derivative Analyst	tirthankar.d@ashikagroup.com	+91 33 4036 0645

SEBI Registration No. INH000000206

Disclosure

The Research Analysts and /or Ashika Stock Broking Limited do hereby certify that all the views expressed in this research report accurately reflect their views about the subject issuer(s) or securities. Moreover, they also certify the followings:-

- The Research Analyst or Ashika Stock Broking Limited or his/its Associates or his/its relative, has any financial interest in the subject company (ies) covered in this report. **Yes**
- The Research Analyst or Ashika Stock Broking Limited or his/its Associates or his/its relative, have actual/beneficial ownership of 1% or more in the subject company, at the end of the month immediately preceding the date of the publication of the research report. **No**
- The Research Analyst or Ashika Stock Broking Limited or his/its Associates or his/its relatives has any material conflict of interest at the time of publication of the research report. **No**
- The Research Analyst or Ashika Stock Broking Limited or his/its Associates have received any compensation or compensation for investment banking or merchant banking or brokerage services or for product other than for investment banking or merchant banking or brokerage services from the companies covered in this report in the past 12 months. **No**
- The Research Analyst or Ashika Stock Broking Limited or his/its Associates have managed or co managed in the previous 12 months any private or public offering of securities for the company (ies) covered in this report. **No**
- The Research Analyst or Ashika Stock Broking Limited or his/its Associates have received any compensation or other benefits from the company (ies) covered in this report or any third party in connection with the Research Report. **No**
- The Research Analyst has served as an officer, director or employee of the company (ies) covered in the research report. **No**
- The Research Analyst or Ashika Stock Broking Limited has been engaged in Market making activity of the company (ies) covered in the research report. **No**

Disclaimer

This report is for the personal information of the authorized recipient and does not construe to be any investment, legal or taxation advice to you. Ashika Stock Broking Ltd. is not soliciting any action based upon it. This report is not for public distribution and has been furnished to you solely for your information and should not be reproduced or redistributed to any other person in any form. The report is based upon information that we consider reliable, but we do not represent that it is accurate or complete, and it should not be relied upon such. Ashika Stock Broking Ltd. or any of its affiliates or employees shall not be in anyway responsible for any loss or damage that may arise to any person from any inadvertent error in the information contained in this report. Ashika Stock Broking Ltd. or any of its affiliates or employees do not provide at any time, any express or implied