

Technical Report

Closing Brief

Nifty after much anticipation clocked a one side rally to end near its intraday high at 8380.65 generating a return of over 1%. The move came on the back of a strong market breadth as suggested by the advance decline ratio that quoted 988:486 favor of advances.

Technical Build up

- ❖ Bullish Marubazu candle with increase in volume
- ❖ Buy crossover in oscillators.
- ❖ Upper band of Bollinger exist at 8368
- ❖ Crucial moving average of 20/50 SMA are at 8137 and 8182
- ❖ 200 SMA trend deciding level exist at 8284

Outlook for the day

Indian Equity market gained over one percent along with noticeable move on broader front. The up move was the reflection of budget expectations as majority feels that the government will announce some measures to boost the growth rate, considering the recent slowdown after demonetisation. Besides, markets reacted positively in anticipation of clarity on policy front from the newly elected US President. On the technical front, Nifty formed bullish candle and witnessed positive break from its recent consolidation zone and now the breakout level of 8275 would act as important support levels. Presently the index maintains its bullish sequence & has no signs of termination hence it seems that the ongoing move could extend further towards the Island gap support placed near 8450. Breach below 8130 (Low of Weekly Spinning Top) would negate the setup & remains a vital stop for trading longs. On the option front data shows significant built-up in PE of 8200-8400 strike. On call side addition was seen in 8500 CE while 8300 CE remained firm. Indicative band stays at 8000-8400 level.

Technical & Derivative Report

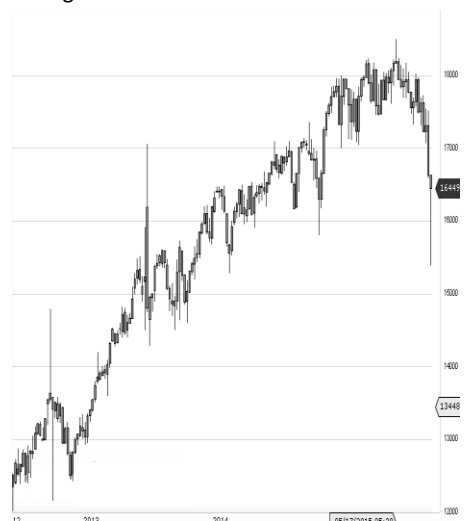
World Indices	LTP	Daily Ch(Pts)	Daily Ch(%)
Dow Jones	19954	98	0.50
Nasdaq	5563	11	0.21
S&P 500	2275	6	0.28
FTSE 100	7290	15	0.21
DAX	11646	62	0.54
Hang Seng	22921	-13	-0.06
Nikkei	19203	-161	-0.83
Sensex	27140	240	0.90
Nifty	8380	92	1.11

Commodity /Forex	LTP	Daily Ch(Pts)	Daily Ch(%)
Gold (\$/Oz)	1194.60	-2.00	-0.17
Silver (\$/Oz)	16.86	0.03	0.16
Copper(USD/lb.)	261.20	0.15	0.06
Brent Crude(USD/bbl)	55.06	-0.04	-0.07
USD/INR	68.33	0.14	0.22
USD/YEN	115.06	-0.35	-0.30
USD/EUR	1.0586	0.0004	0.04

Support/Resistance levels for Indian Equity Indices					
	S1	S2	CMP	R1	R2
Sensex	27000	26840	27140	27240	27410
Nifty	8340	8290	8380	8410	8460
Nifty (Fut)	8350	8300	8387	8420	8470

Pivot Level	
Sensex	27097
Nifty	8363

US: US market closed higher in choppy trade on Wednesday, shrugging off a sharp decline in health care stocks following remarks made by President-elect Donald Trump. Technically DJIA is presently trading at the 5th leg through Elliot wave count with negative divergence in oscillators.



Increase in OI with Increase in Price (Long Buildup)						Increase in OI with Decrease in Price (Short Buildup)					
Symbol	Prev OI	Curr OI	OI Chg (%)	Curr Pr.	Pr.Chg (%)	Symbol	Prev OI	Curr OI	OI Chg (%)	Curr Pr.	Pr.Chg (%)
OIL	1081	1542	42.7	455	0.2	TORNTP					
DCBBAN						OWER	927	974	5.1	179.5	[0.6]
K	543	666	22.7	117.4	3.2	ITC	16244	16963	4.4	247.5	[0.6]
PETRON						BAJFINA					
ET	2936	3425	16.7	368.3	1.4	NCE	14965	15612	4.3	896	[0.5]
INDUSIN						TECHM	8318	8566	3	473.5	[0.0]
DBK	9104	10568	16.1	1234.5	5.9	HCLTEC					
LICHSGF						H	8394	8570	2.1	832.45	[0.5]
IN	8608	9991	16.1	534.85	2.2						

Nifty gained by 1.11% with Nifty future added 7.2 lakh shares in open interest and stock future shaded 369.2 Lakh shares in open interest.

- Nifty PCR increased to 1.17 from 1.11
- Total Nifty Calls added 5.6 lakh shares in open interest.
- Total Nifty Puts added 45.1 lakh shares in open interest.
- Maximum open interest (Nifty) in Calls for Jan series is at 8400 and 8000 put.
- FII's sold net Rs.627.3 Cr(provisional), while DIIs bought net Rs.1116.15 Cr in cash market.
- FII bought net Rs.3548.56 Cr in F&O
- Securities in Ban Period: CENTURYTEX, IBREALEST, JINDALSTEL, JPASSOCIAT & WOCKPHARMA

Nifty Tracker

PARTICULARS	11/01/2017	10/01/2017	09/01/2017	06/01/2017
Spot	8380.65	8288.6	8236.05	8243.8
% Change in Spot	1.11%	0.64%	-0.09%	-0.36%
Nifty(FUT) Jan	8387.2	8293.85	8249.9	8267.65
Nifty(FUT) Jan Vol.	115758	79420	62644	111583
Nifty(FUT) Jan - OI	19355850	18709950	18707775	18727275
Nifty(FUT) Feb	8413.55	8318.85	8277.05	8293.75
Nifty(FUT) Feb Vol.	6034	3297	4102	6052
Nifty(FUT) Feb - OI	1353000	1307550	1307775	1222725

Trade Statistics for 11/01/2017

PARTICULARS	NO. OF CONTRACTS	TURNOVER (RS. CR.)	PUT CALL RATIO
NSE Index Futures	2,44,747	16828	-
NSE Stock Futures	6,19,869	41932	-
NSE Index Options	62,62,473	4,43,788.28	-
NSE Stock Options	4,26,667	30025	0.47
NSE F&O Total Turnover	75,53,756	532,573	0.97
NSE Cash Turnover	-	21,558.79	-
BSE Cash Turnover	-	3662.68	-
Total Turnover	-	557795	-

FII Corner (F&O)

FII NET BUYING/SELLING & CHANGE IN OPEN INTEREST (Cr. Rupee)						
PARTICULARS	11/01/2017		10/01/2017		09/01/2017	
	Net Buying /Selling	Change In Open interest	Net Buying /Selling	Change In Open interest	Net Buying /Selling	Change In Open interest
Index Future	744	994	-204	26	-173	-171
Index option	1044	3492	-119	1605	572	1015
Stock Future	1650	1192	436	648	-141	149
Stock option	111	843	-44	430	1	401
Total	3549	6521	69	2708	259	1394

Market Open Interest

ADDITION/REDUCTION IN MARKET OPEN INTEREST					
Contracts	11/01/2017	10/01/2017	09/01/2017	06/01/2017	05/01/2017
Index Futures	1337	266	42	-253	936
Index Options	2032	1622	858	-353	1379
Stock Futures	13685	3016	5533	-16042	12021
Stock Options	1213	1538	1251	1029	1171
F&O Total	18267	6442	7684.45	-15618.32	15506.08

Nifty Option Open Interest Statistics

NIFTY OPTIONS HIGHEST ADDITION IN OPEN INTEREST						
Expiry	Strike	Option Type	Settlement Price	Volume	Open Interest	Change In OI
25-Jan-17	8300	PE	46.55	219611	4703400	1720350
25-Jan-17	8400	PE	82.85	73972	2394450	1026225
25-Jan-17	8200	PE	25.8	171282	5632875	905175
25-Jan-17	8500	CE	30.85	185024	4389450	596625
25-Jan-17	8600	CE	11	106451	3224550	418425
25-Jan-17	8350	PE	62.2	12896	341100	263625
23-Feb-17	8800	CE	27.85	13367	1017300	233850
25-Jan-17	8000	PE	9.75	117645	6848700	228000
23-Feb-17	8400	PE	150.9	6052	472050	202950
25-Jan-17	8100	PE	15.05	151736	4773900	188925

NIFTY OPTIONS HIGHEST REDUCTION IN OPEN INTEREST						
Expiry	Strike	Option Type	Settlement Price	Volume	Open Interest	Change In OI
25-Jan-17	8200	CE	208.2	42678	3246375	-653100
25-Jan-17	7700	PE	3.1	21149	2161650	-399450
25-Jan-17	8100	CE	298.6	7891	1884450	-196650
25-Jan-17	8000	CE	394	6115	1833300	-192825
25-Jan-17	7500	PE	2	17463	2545200	-168150
25-Jan-17	8400	CE	70.8	187310	5064375	-143475
25-Jan-17	8700	CE	4.05	43830	1631625	-134775
25-Jan-17	7400	PE	1.4	4222	774075	-120975
25-Jan-17	7900	PE	6.45	70682	3304725	-96450
25-Jan-17	7300	PE	1.15	2235	646500	-75900

Stock Option Open Interest Statistics

STOCK OPTIONS WITH HIGHEST ADDITION IN OPEN INTEREST							
Symbol	Expiry	Strike	Option Type	Settl. Price	Volume	Open Interest	Change in OI
ADANIPOWER	25-Jan-17	35	CE	1.3	1040	8740000	3940000
SOUTHBANK	25-Jan-17	25	CE	0.1	416	5430000	3150000
SOUTHBANK	25-Jan-17	22.5	CE	0.4	613	7140000	2610000
JINDALSTEL	25-Jan-17	90	CE	0.95	1438	2448000	1944000
JINDALSTEL	25-Jan-17	80	PE	2.05	468	1863000	1629000
ADANIPOWER	25-Jan-17	37.5	CE	0.5	445	3180000	1600000
SAIL	25-Jan-17	60	CE	0.6	1438	3456000	1476000
JINDALSTEL	25-Jan-17	100	CE	0.25	446	1485000	1458000
JINDALSTEL	25-Jan-17	60	PE	0.05	173	1665000	1431000
JINDALSTEL	25-Jan-17	85	CE	2	2126	2079000	1260000

STOCK OPTIONS WITH HIGHEST REDUCTION IN OPEN INTEREST							
Symbol	Expiry	Strike	Option Type	Settl. Price	Volume	Open Int.	Change in OI
ADANIPOWER	25-Jan-17	32.5	CE	3.15	439	4880000	-3840000
SBIN	25-Jan-17	250	CE	7.05	3847	6309000	-2856000
PNB	25-Jan-17	120	CE	5.6	1829	2723000	-2541000
JPASSOCIAT	25-Jan-17	12.5	CE	0.1	38	27472000	-2380000
HINDALCO	25-Jan-17	165	CE	11.45	1153	850500	-1095500
SAIL	25-Jan-17	52.5	CE	3.95	342	2784000	-864000
JINDALSTEL	25-Jan-17	75	CE	7.9	267	765000	-810000
ICICIBANK	25-Jan-17	260	CE	8.95	1899	3385000	-755000
RECLTD	25-Jan-17	130	CE	5.05	487	1578000	-588000
ADANIPOWER	25-Jan-17	30	CE	5.4	73	2140000	-520000

Research Team

Name	Designation	Email ID	Contact No.
Paras Bothra	President Equity Research	paras@ashikagroup.com	+91 22 6611 1704
Krishna Kumar Agarwal	Equity Research Analyst	krishna.a@ashikagroup.com	+91 33 4036 0646
Partha Mazumder	Equity Research Analyst	partha.m@ashikagroup.com	+91 33 4036 0647
Arijit Malakar	Equity Research Analyst	amalakar@ashikagroup.com	+91 33 4036 0644
Kapil Jagasia, CFA	Equity Research Analyst	kapil.j@ashikagroup.com	+91 22 6611 1715
Tirthankar Das	Technical & Derivative Analyst	tirthankar.d@ashikagroup.com	+91 33 4036 0645

SEBI Registration No. INH000000206

Disclosure

The Research Analysts and /or Ashika Stock Broking Limited do hereby certify that all the views expressed in this research report accurately reflect their views about the subject issuer(s) or securities. Moreover, they also certify the followings:-

- The Research Analyst or Ashika Stock Broking Limited or his/its Associates or his/its relative, has any financial interest in the subject company (ies) covered in this report. **Yes**
- The Research Analyst or Ashika Stock Broking Limited or his/its Associates or his/its relative, have actual/beneficial ownership of 1% or more in the subject company, at the end of the month immediately preceding the date of the publication of the research report. **No**
- The Research Analyst or Ashika Stock Broking Limited or his/its Associates or his/its relatives has any material conflict of interest at the time of publication of the research report. **No**
- The Research Analyst or Ashika Stock Broking Limited or his/its Associates have received compensation for investment banking or merchant banking or brokerage services or for product other than for investment banking or merchant banking or brokerage services from the companies covered in this report in the past 12 months. **No**
- The Research Analyst or Ashika Stock Broking Limited or his/its Associates have managed or co managed in the previous 12 months any private or public offering of securities for the company (ies) covered in this report. **No**
- The Research Analyst or Ashika Stock Broking Limited or his/its Associates have received any compensation or other benefits from the company (ies) covered in this report or any third party in connection with the Research Report. **No**
- The Research Analyst has served as an officer, director or employee of the company (ies) covered in the research report. **No**
- The Research Analyst or Ashika Stock Broking Limited has been engaged in Market making activity of the company (ies) covered in the research report. **No**

Disclaimer

This report is for the personal information of the authorized recipient and does not construe to be any investment, legal or taxation advice to you. Ashika Stock Broking Ltd. is not soliciting any action based upon it. This report is not for public distribution and has been furnished to you solely for your information and should not be reproduced or redistributed to any other person in any form. The report is based upon information that we consider reliable, but we do not represent that it is accurate or complete, and it should not be relied upon such. Ashika Stock Broking Ltd. or any of its affiliates or employees shall not be in anyway responsible for any loss or damage that may arise to any person from any inadvertent error in the information contained in this report. Ashika Stock Broking Ltd., or any of its affiliates or employees do not provide, at any time, any express or implied warranty of any kind, regarding any matter pertaining to this report, including without limitation the implied warranties of merchantability, fitness for a particular purpose, and non-infringement. The recipients of this report should rely on their own investigations.