

Technical Report

Closing Brief

Benchmark indices ended on a positive note amid flat trading ahead of December's factory output. The benchmark indices ended flat at 8793.55 levels up by 15.15 points i.e. 0.17%.

Technical Build up

- ❖ Bearish Hanging Man candle with decrease in volume
- ❖ Buy crossover in oscillators.
- ❖ Upper band of Bollinger exist at 8864
- ❖ Crucial moving average of 20/50 SMA are at 8551 and 8307
- ❖ 200 SMA trend deciding level exist at 8365

Outlook for the day

Indian Equity market closed marginally higher in a dull session. continuing its consolidation phase. Firm global cues helped index to open in green but caution ahead of the IIP data capped upside till the end. U.S. president's comment of a "phenomenal" reconstruction of business taxes had been fueling the global markets. On the technical front, Nifty has formed a doji candle on weekly charts indicating indecisiveness amongst traders, while on the daily charts, Nifty is trading in a range of 8715-8821 for the last few trading session, breaching the same shall give next movement on Nifty. Nifty presently has supports near 8645-8660 zones, where its previous swing highs and cluster of short term moving averages are placed, while on the upside its previous major swing highs zone of 8890-8900 might act as resistance for the week, and breach of the same shall trigger another 100-150 points move on the upside. On the F&O front incremental built-up in futures was seen while on the option front data suggest upward shift in option activity. Major addition was seen in 9000 CE & 8800 PE. Highest congestion continues at 9000 CE and 8500 PE.

Technical & Derivative Report

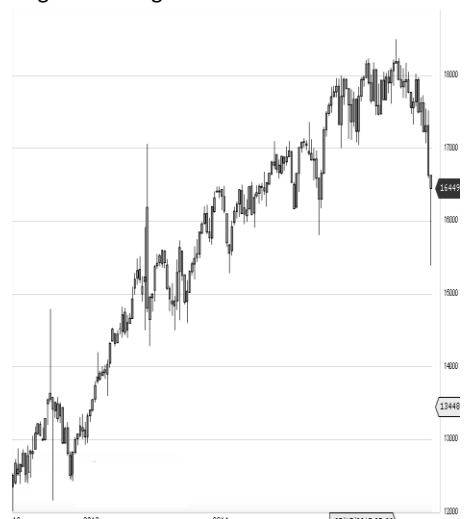
World Indices	LTP	Daily Ch(Pts)	Daily Ch(%)
Dow Jones	20269	96	0.48
Nasdaq	5734	18	0.33
S&P 500	2316	8	0.36
FTSE 100	7258	29	0.40
DAX	11666	24	0.21
Hang Seng	23665	90	0.39
Nikkei	19500	121	0.63
Sensex	28334	4	0.02
Nifty	8793	15	0.17

Commodity /Forex	LTP	Daily Ch(Pts)	Daily Ch(%)
Gold (\$/Oz)	1231.90	-4.00	-0.32
Silver (\$/Oz)	17.97	0.04	0.21
Copper(USD/lb.)	280.55	3.75	1.35
Brent Crude(USD/bbl)	56.63	-0.07	-0.12
USD/INR	66.88	0.03	0.05
USD/YEN	113.94	0.72	0.64
USD/EUR	1.0616	-0.0027	-0.25

Support/Resistance levels for Indian Equity Indices					
	S1	S2	CMP	R1	R2
Sensex	28225	28150	28334	28425	28510
Nifty	8760	8740	8793	8820	8846
Nifty (Fut)	8775	8755	8809	8835	8860

Pivot Level	
Sensex	28359
Nifty	8795

US: US market concluded the week on a high note Friday, climbing to new record highs a day after President Donald Trump promised to release a tax plan in the near future. Technically DJIA is presently trading at the 5th leg through Elliot wave count with negative divergence in oscillators.



Increase in OI with Increase in Price (Long Buildup)					
Symbol	Prev OI	Curr OI	OI Chg (%)	Curr Pr.	Pr.Chg (%)

Increase in OI with Decrease in Price (Short Buildup)					
Symbol	Prev OI	Curr OI	OI Chg (%)	Curr Pr.	Pr.Chg (%)

Nifty gained by 0.17% with Nifty future shaded 0.1 lakh shares in open interest and stock future added 17.4 Lakh shares in open interest.

- Nifty PCR decreased to 1.11 from 1.12
- Total Nifty Calls added 16.5 lakh shares in open interest.
- Total Nifty Puts added 13.6 lakh shares in open interest.
- Maximum open interest (Nifty) in Calls for Jan series is at 9000 and 8500 put.
- FII's bought net Rs.504.51 Cr(provisional), while DIIs sold net Rs.224.76 Cr in cash market.
- FII bought net Rs.895.85 Cr in F&O
- Securities in Ban Period: BANKINDIA, CEATLTD, HDIL, JINDALSTEL, JPASSOCIAT, ORIENTBANK. RCOM, UNIONBANK & WOCKPHARMA

Nifty Tracker

PARTICULARS	10/02/2017	09/02/2017	08/02/2017	07/02/2017
Spot	8793.55	8778.4	8769.05	8768.3
% Change in Spot	0.17%	0.11%	0.01%	-0.37%
Nifty(FUT) Feb	8809.35	8796.85	8796.35	8785.55
Nifty(FUT) Feb Vol.	87575	155576	116252	85012
Nifty(FUT) Feb - OI	21685425	21760950	21768225	21568425
Nifty(FUT) Mar	8839.95	8828.4	8828.3	8812.1
Nifty(FUT) Mar Vol.	3572	7178	4949	3354
Nifty(FUT) Mar - OI	1599450	1558575	1415025	1342575

Trade Statistics for 10/02/2017

PARTICULARS	NO. OF CONTRACTS	TURNOVER (RS. CR.)	PUT CALL RATIO
NSE Index Futures	1,61,614	11714	-
NSE Stock Futures	5,61,696	40451	-
NSE Index Options	27,39,375	1,99,213.44	-
NSE Stock Options	4,22,520	31544	0.49
NSE F&O Total Turnover	38,85,205	282,923	0.87
NSE Cash Turnover	-	22,246.92	-
BSE Cash Turnover	-	3,050.89	-
Total Turnover	-	308221	-

FII Corner (F&O)

FII NET BUYING/SELLING & CHANGE IN OPEN INTEREST (Cr. Rupee)						
PARTICULARS	10/02/2017		09/02/2017		08/02/2017	
	Net Buying /Selling	Change In Open interest	Net Buying /Selling	Change In Open interest	Net Buying /Selling	Change In Open interest
Index Future	243	168	600	489	603	606
Index option	852	2933	1373	550	-258	4205
Stock Future	76	378	-165	901	-797	1272
Stock option	-274	329	150	449	-47	897
Total	897	3807	1958	2389	-499	6981

Market Open Interest

ADDITION/REDUCTION IN MARKET OPEN INTEREST					
Contracts	10/02/2017	09/02/2017	08/02/2017	07/02/2017	06/02/2017
Index Futures	187	-316	444	-309	868
Index Options	205	775	1266	450	1517
Stock Futures	-23915	17078	9974	4355	7636
Stock Options	1520	1185	1434	2139	1653
F&O Total	-22003	18722	13117.73	6635.77	11673.66

Nifty Option Open Interest Statistics

NIFTY OPTIONS HIGHEST ADDITION IN OPEN INTEREST						
Expiry	Strike	Option Type	Settlement Price	Volume	Open Interest	Change In OI
23-Feb-17	9000	CE	11.4	157752	6890925	563475
23-Feb-17	8800	PE	67.05	183301	3831750	495825
30-Mar-17	9200	CE	31.75	12814	1302150	403350
23-Feb-17	8700	PE	34.6	157892	4757250	376875
23-Feb-17	8950	CE	18.55	13480	515175	234450
26-Dec-19	9000	PE	541.25	2666	211200	190875
23-Feb-17	8750	PE	47.55	15537	579675	153750
23-Feb-17	9200	CE	1.75	20295	2585325	142350
23-Feb-17	9100	CE	3.95	48154	3052275	132825
23-Feb-17	8850	CE	49	29941	624825	125400

NIFTY OPTIONS HIGHEST REDUCTION IN OPEN INTEREST						
Expiry	Strike	Option Type	Settlement Price	Volume	Open Interest	Change In OI
23-Feb-17	8700	CE	139.1	39428	2720475	-287775
23-Feb-17	8600	PE	17.7	109336	4287150	-148725
23-Feb-17	9000	PE	199.4	8044	1251825	-125400
23-Feb-17	8400	PE	5.55	49595	4194450	-95100
23-Feb-17	8100	PE	1.55	11767	1954650	-57825
23-Feb-17	8200	PE	2.2	8171	3083100	-56550
23-Feb-17	8300	PE	3.55	21822	3979500	-49050
23-Feb-17	8600	CE	220.45	5428	1610400	-48300
23-Feb-17	8500	CE	313.15	2616	1313175	-45750
23-Feb-17	7000	CE	1797.35	692	921600	-40350

Stock Option Open Interest Statistics

STOCK OPTIONS WITH HIGHEST ADDITION IN OPEN INTEREST							
Symbol	Expiry	Strike	Option Type	Settl. Price	Volume	Open Interest	Change in OI
SBIN	23-Feb-17	300	CE	0.9	11463	10068000	4314000
SBIN	23-Feb-17	290	CE	2.2	9870	7779000	3546000
SBIN	23-Feb-17	280	CE	5.15	10689	8361000	2985000
SBIN	23-Feb-17	260	PE	1.1	6155	5646000	2799000
NHPC	23-Feb-17	35	CE	0.05	238	14850000	1944000
SBIN	23-Feb-17	280	PE	7.9	5218	2697000	1545000
SAIL	23-Feb-17	65	CE	0.75	1184	5388000	1524000
SBIN	23-Feb-17	285	CE	3.45	5128	4848000	1428000
GMRINFRA	23-Feb-17	17.5	CE	0.15	337	9045000	1395000
BANKBARODA	23-Feb-17	200	CE	2.7	2720	2863000	1330000

STOCK OPTIONS WITH HIGHEST REDUCTION IN OPEN INTEREST							
Symbol	Expiry	Strike	Option Type	Settl. Price	Volume	Open Int.	Change in OI
SAIL	23-Feb-17	70	CE	0.2	1473	5580000	-1440000
HINDALCO	23-Feb-17	210	CE	0.7	1197	2404500	-1211000
JPASSOCIAT	23-Feb-17	12.5	CE	1.25	31	14552000	-1088000
GMRINFRA	23-Feb-17	12.5	PE	0.05	91	8910000	-1035000
RCOM	23-Feb-17	40	CE	0.25	89	12948000	-804000
IDEA	23-Feb-17	115	CE	3.3	848	6013000	-728000
IDEA	23-Feb-17	100	CE	11.45	131	2485000	-644000
GMRINFRA	30-Mar-17	12.5	PE	0.25	30	990000	-630000
RPOWER	23-Feb-17	55	CE	0.1	85	1788000	-600000
TV18BRDCST	23-Feb-17	40	CE	2.15	339	3434000	-561000

Research Team

Name	Designation	Email ID	Contact No.
Paras Bothra	President Equity Research	paras@ashikagroup.com	+91 22 6611 1704
Krishna Kumar Agarwal	Equity Research Analyst	krishna.a@ashikagroup.com	+91 33 4036 0646
Partha Mazumder	Equity Research Analyst	partha.m@ashikagroup.com	+91 33 4036 0647
Arijit Malakar	Equity Research Analyst	amalakar@ashikagroup.com	+91 33 4036 0644
Kapil Jagasia, CFA	Equity Research Analyst	kapil.j@ashikagroup.com	+91 22 6611 1715
Tirthankar Das	Technical & Derivative Analyst	tirthankar.d@ashikagroup.com	+91 33 4036 0645

SEBI Registration No. INH000000206

Disclosure

The Research Analysts and /or Ashika Stock Broking Limited do hereby certify that all the views expressed in this research report accurately reflect their views about the subject issuer(s) or securities. Moreover, they also certify the followings:-

- The Research Analyst or Ashika Stock Broking Limited or his/its Associates or his/its relative, has any financial interest in the subject company (ies) covered in this report. **Yes**
- The Research Analyst or Ashika Stock Broking Limited or his/its Associates or his/its relative, have actual/beneficial ownership of 1% or more in the subject company, at the end of the month immediately preceding the date of the publication of the research report. **No**
- The Research Analyst or Ashika Stock Broking Limited or his/its Associates or his/its relatives has any material conflict of interest at the time of publication of the research report. **No**
- The Research Analyst or Ashika Stock Broking Limited or his/its Associates have received compensation for investment banking or merchant banking or brokerage services or for product other than for investment banking or merchant banking or brokerage services from the companies covered in this report in the past 12 months. **No**
- The Research Analyst or Ashika Stock Broking Limited or his/its Associates have managed or co managed in the previous 12 months any private or public offering of securities for the company (ies) covered in this report. **No**
- The Research Analyst or Ashika Stock Broking Limited or his/its Associates have received any compensation or other benefits from the company (ies) covered in this report or any third party in connection with the Research Report. **No**
- The Research Analyst has served as an officer, director or employee of the company (ies) covered in the research report. **No**
- The Research Analyst or Ashika Stock Broking Limited has been engaged in Market making activity of the company (ies) covered in the research report. **No**

Disclaimer

This report is for the personal information of the authorized recipient and does not construe to be any investment, legal or taxation advice to you. Ashika Stock Broking Ltd. is not soliciting any action based upon it. This report is not for public distribution and has been furnished to you solely for your information and should not be reproduced or redistributed to any other person in any form. The report is based upon information that we consider reliable, but we do not represent that it is accurate or complete, and it should not be relied upon such. Ashika Stock Broking Ltd. or any of its affiliates or employees shall not be in anyway responsible for any loss or damage that may arise to any person from any inadvertent error in the information contained in this report. Ashika Stock Broking Ltd., or any of its affiliates or employees do not provide, at any time, any express or implied warranty of any kind, regarding any matter pertaining to this report, including without limitation the implied warranties of merchantability, fitness for a particular purpose, and non-infringement. The recipients of this report should rely on their own investigations.