

Technical Report

Closing Brief

A build-up in tension linked to geopolitical developments gave markets the blues on Wednesday as the Sensex lost 145 points at 29,643, Nifty ended lower by 33.55 points, or 0.36%, at 9,203.45 after cracking below 9,200.

Technical Build up

- ❖ Bearish candle with decrease in volume
- ❖ Sell crossover in oscillators.
- ❖ Upper band of Bollinger exist at 9286
- ❖ Crucial moving average of 20/50 SMA are at 9154 and 8965
- ❖ 200 SMA trend deciding level exist at 8581

Outlook for the day

Indian Equity market fell nearly half a percent amid volatility, in continuation to its prevailing consolidation phase. Geo-political tensions had a negative sentiment in the market. Investors sat tight ahead of start of the corporate earnings season and the Industrial output data for February and retail inflation for March, slated for release after the market hours. IIP contracted -1.2% in February from 2.7% in January while retail inflation rate rose to 3.81% in March from February's 3.65%. On the technical front, a Bearish Candle similar to Hanging Man on daily chart in Nifty was seen which indicates weakness. However Nifty has been taking support from averages and also paused near its rising trendline. Thus the same support at 9160-9170 holds below which 9100-9120 would open while resistance comes in at 9240-9250 and above that at 9275-9280 for the next couple of trading sessions. On the option front data signifies writing in calls of 9200-9300 strike while unwinding in Put of 9000-9300 strike which indicates restricted upside. Option indicative band is at 9000-9300.



Increase in OI with Increase in Price (Long Buildup)						Increase in OI with Decrease in Price (Short Buildup)					
Symbol	Prev OI	Curr OI	OI Chg (%)	Curr Pr.	Pr.Chg (%)	Symbol	Prev OI	Curr OI	OI Chg (%)	Curr Pr.	Pr.Chg (%)
SUZLON	5073	7431	46.5	19.95	1.3	TATAST					
CAPF	912	1147	25.8	798.5	2.3	EEL	12442	13956	12.2	480.15	[2.0]
INFRATE						RDEL	1101	1226	11.4	65.3	[5.2]
L	3973	4608	16	368	3.4	SRTRAN					
PETRON						SFIN	2989	3307	10.6	1074	[1.5]
ET	2956	3332	12.7	435.5	2.7	RELCAPI					
AMBUJA						TAL	8507	9315	9.5	611.5	[2.0]
CEM	4318	4766	10.4	249	0.1	HINDALCO	11467	12338	7.6	193	[2.1]

Technical & Derivative Report

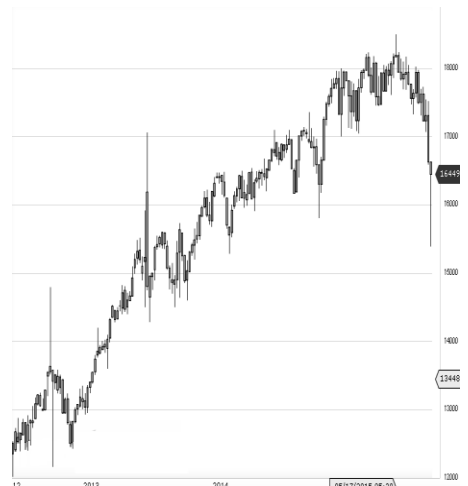
World Indices	LTP	Daily Ch(Pts)	Daily Ch(%)
Dow Jones	20591	-59	-0.29
Nasdaq	5836	-30	-0.52
S&P 500	2344	-8	-0.38
FTSE 100	7348	-16	-0.22
DAX	12154	15	0.13
Hang Seng	24221	-91	-0.38
Nikkei	18340	-211	-1.14
Sensex	29643	-144	-0.49
Nifty	9203	-33	-0.36

Commodity /Forex	LTP	Daily Ch(Pts)	Daily Ch(%)
Gold (\$/Oz)	1288.90	10.80	0.85
Silver (\$/Oz)	18.50	0.20	1.07
Copper(USD/lb.)	255.00	0.50	0.20
Brent Crude(USD/bbl)	55.67	-0.19	-0.34
USD/INR	64.67	0.17	0.27
USD/YEN	108.82	-0.21	-0.19
USD/EUR	1.0666	0.0001	0.01

Support/Resistance levels for Indian Equity Indices					
	S1	S2	CMP	R1	R2
Sensex	29500	29300	29643	29800	29900
Nifty	9160	9100	9203	9250	9280
Nifty (Fut)	9180	9120	9223	9270	9300

Pivot Level					
Sensex					
Nifty					

US: US market closed lower on Wednesday as investors assessed the geopolitical landscape. The dollar hit a session low after President Donald Trump told the Wall Street Journal he thought the currency was getting "too strong. Technically DJIA is presently trading at the 5th leg through Elliot wave count with negative divergence in oscillators.



Nifty declined by 0.36% with Nifty future shaded 0.8 lakh shares in open interest and stock future added 319.3 Lakh shares in open interest.

- Nifty PCR decreased to 1.10 from 1.11
- Total Nifty Calls added 6.8 lakh shares in open interest.
- Total Nifty Puts added 1.5 lakh shares in open interest.
- Maximum open interest (Nifty) in Calls for Jan series is at 9300 and 9000 put.
- FII's sold net Rs.580.7 Cr(provisional), while DIIs bought net Rs.701.12 Cr in cash market.
- FII bought net Rs.1193.81 Cr in F&O
- Securities in Ban Period: ADANIPOWER, BHARATFIN, IBREALEST , INFIBEAM, JINDALSTEL & UJJIVAN

Nifty Tracker

PARTICULARS	12/04/2017	11/04/2017	10/04/2017	07/04/2017
Spot	9203.45	9237	9181.45	9198.3
% Change in Spot	-0.36%	0.61%	-0.18%	-0.69%
Nifty(FUT) Apr	9223.2	9264.45	9209.35	9211.45
Nifty(FUT) Apr Vol.	149706	105610	89731	105144
Nifty(FUT) Apr - OI	20926650	21020175	20688075	21030825
Nifty(FUT) May	9245.05	9286.9	9232.55	9235.75
Nifty(FUT) May Vol.	5801	4786	2980	3576
Nifty(FUT) May - OI	2391675	2390625	2245200	2275350

Trade Statistics for 12/04/2017

PARTICULARS	NO. OF CONTRACTS	TURNOVER (RS. CR.)	PUT CALL RATIO
NSE Index Futures	2,51,212	19023	-
NSE Stock Futures	6,59,763	50951	-
NSE Index Options	61,35,123	4,96,922.69	-
NSE Stock Options	4,28,632	33592	0.5
NSE F&O Total Turnover	74,74,730	600,489	0.88
NSE Cash Turnover	-	25,902.47	-
BSE Cash Turnover	-	4129.54	-
Total Turnover	-	630521	-

FII Corner (F&O)

FII NET BUYING/SELLING & CHANGE IN OPEN INTEREST (Cr. Rupee)						
PARTICULARS	12/04/2017		11/04/2017		10/04/2017	
	Net Buying /Selling	Change In Open interest	Net Buying /Selling	Change In Open interest	Net Buying /Selling	Change In Open interest
Index Future	-435	349	-166	-51	-511	-102
Index option	1786	655	1451	1522	537	748
Stock Future	-105	-865	605	504	788	43
Stock option	-52	379	190	630	54	529
Total	1194	518	2080	2606	868	1219

Market Open Interest

ADDITION/REDUCTION IN MARKET OPEN INTEREST					
Contracts	12/04/2017	11/04/2017	10/04/2017	07/04/2017	06/04/2017
Index Futures	-237	855	-65	-483	-405
Index Options	-407	1779	1389	-1590	344
Stock Futures	4507	5643	6904	-18485	17567
Stock Options	1521	1602	1629	1513	2175
F&O Total	5384	9879	9857.26	-19045.02	19681.35

Nifty Option Open Interest Statistics

NIFTY OPTIONS HIGHEST ADDITION IN OPEN INTEREST						
Expiry	Strike	Option Type	Settlement Price	Volume	Open Interest	Change In OI
27-Apr-17	8900	PE	11.15	103920	4003800	956850
27-Apr-17	9300	CE	41.65	249976	4507875	831750
27-Apr-17	9200	CE	89.25	205729	3675525	346875
25-May-17	9400	CE	68.75	11769	907200	205875
27-Apr-17	9250	CE	62.2	36503	547800	155850
25-May-17	9500	CE	39.95	10381	1009500	129900
25-May-17	9600	CE	21.3	8264	497625	117600
25-May-17	9000	PE	60.4	10307	946125	116025
25-May-17	8500	PE	9.75	3204	705150	95850
25-May-17	8500	CE	739.15	1448	690075	94800

NIFTY OPTIONS HIGHEST ADDITION IN OPEN INTEREST						
Expiry	Strike	Option Type	Settlement Price	Volume	Open Interest	Change In OI
27-Apr-17	9500	CE	4.2	123869	3830700	-737850
27-Apr-17	9200	PE	68.2	243219	4252650	-650550
27-Apr-17	9000	PE	21.25	163445	5664000	-445875
27-Apr-17	9400	CE	15.35	193202	3727950	-254400
27-Apr-17	8800	PE	6.15	47008	2259750	-206775
27-Apr-17	9050	PE	28.3	13411	518100	-125400
27-Apr-17	8500	CE	721.6	2632	677250	-110700
27-Apr-17	9500	PE	277.3	5788	666000	-109125
27-Apr-17	9700	CE	0.45	11378	636750	-92550
27-Apr-17	9300	PE	118	67457	1560300	-81300

Stock Option Open Interest Statistics

STOCK OPTIONS WITH HIGHEST ADDITION IN OPEN INTEREST							
Symbol	Expiry	Strike	Option Type	Settl. Price	Volume	Open Interest	Change in OI
SUZLON	27-Apr-17	22.5	CE	0.3	1354	16050000	3390000
SUZLON	27-Apr-17	20	CE	0.85	1669	23190000	2400000
RPOWER	27-Apr-17	50	CE	0.95	399	5712000	1920000
TV18BRDCST	27-Apr-17	45	CE	1.3	268	6834000	1904000
SUZLON	27-Apr-17	20	PE	0.9	150	5700000	1770000
RCOM	27-Apr-17	37.5	CE	0.95	384	2808000	1212000
ADANIPOWER	27-Apr-17	35	CE	0.8	306	2160000	1160000
SUZLON	27-Apr-17	25	CE	0.1	319	8670000	1140000
RECLTD	27-Apr-17	230	CE	1.35	736	1026000	1026000
ASHOKLEY	27-Apr-17	85	CE	1.5	942	5229000	973000

STOCK OPTIONS WITH HIGHEST REDUCTION IN OPEN INTEREST							
Symbol	Expiry	Strike	Option Type	Settl. Price	Volume	Open Int.	Change in OI
ADANIPOWER	27-Apr-17	37.5	PE	4.1	317	2920000	-3940000
ADANIPOWER	27-Apr-17	40	CE	0.25	613	14200000	-2960000
ADANIPOWER	27-Apr-17	45	CE	0.05	229	9880000	-2100000
ADANIPOWER	27-Apr-17	42.5	CE	0.15	206	9820000	-1880000
ADANIPOWER	27-Apr-17	50	CE	0.05	110	4720000	-1700000
ADANIPOWER	27-Apr-17	30	PE	0.3	216	2020000	-1380000
ADANIPOWER	27-Apr-17	35	PE	1.95	591	5140000	-1380000
SOUTHBANK	27-Apr-17	20	PE	0.05	60	3181536	-1093653
ADANIPOWER	27-Apr-17	32.5	PE	0.75	298	2800000	-1020000
JPASSOCIAT	27-Apr-17	12.5	CE	0.9	64	3740000	-816000

Research Team

Name	Designation	Email ID	Contact No.
Paras Bothra	President Equity Research	paras@ashikagroup.com	+91 22 6611 1704
Krishna Kumar Agarwal	Equity Research Analyst	krishna.a@ashikagroup.com	+91 33 4036 0646
Partha Mazumder	Equity Research Analyst	partha.m@ashikagroup.com	+91 33 4036 0647
Arijit Malakar	Equity Research Analyst	amalakar@ashikagroup.com	+91 33 4036 0644
Kapil Jagasia, CFA	Equity Research Analyst	kapil.j@ashikagroup.com	+91 22 6611 1715
Tirthankar Das	Technical & Derivative Analyst	tirthankar.d@ashikagroup.com	+91 33 4036 0645

Ashika Stock Broking Limited ("ASBL") or Research Entity has started its journey in the year 1994 and is engaged in the business of broking services, depository services, distributor of financial products (Mutual fund, IPO & Bonds). This research report has been prepared and distributed by ASBL in the sole capacity of a Research Analyst (Reg No. INH00000206) of SEBI (Research Analyst) Regulations 2014. ASBL is a wholly owned subsidiary of Ashika Global Securities (P) Ltd., a RBI registered non-deposit taking NBFC Company. Ashika group (details is enumerated on our website www.ashikagroup.com) is an integrated financial service provider inter alia engaged in the business of Investment Banking, Corporate Lending, Commodity Broking, Debt Syndication & Other Advisory Services.

There were no significant and material disciplinary actions against ASBL taken by any regulatory authority during last three years.

Disclosure

ASBL or its associates, its Research Analysts (including their relatives) may have financial interest in the subject company(ies). However, the said financial interest is not limited to having an open stock market position in /acting as advisor to /having a loan transaction with the subject company(ies) apart from registration as clients.

- ASBL or its Research Analysts (including their relatives) do not have any actual / beneficial ownership of 1% or more of securities of the subject company(ies) at the end of the month immediately preceding the date of publication of this report or date of the public appearance. However ASBL's associates may have actual / beneficial ownership of 1% or more of securities of the subject company(ies).
- ASBL or their Research Analysts (including their relatives) do not have any other material conflict of interest at the time of publication of this research report or date of the public appearance. However ASBL's associates might have an actual / potential conflict of interest (other than ownership).
- ASBL or its associates may have received compensation for investment banking, merchant banking, and brokerage services and for other products and services from the subject companies during the preceding 12 months. However, ASBL or its associates or its Research analysts (forming part of Research Desk) have not received any compensation or other benefits from the subject companies or third parties in connection with the research report. Moreover, Research Analysts have not received any compensation from the companies mentioned herein in the past twelve months.
- ASBL or their Research Analysts have not managed or co-managed public offering of securities for the subject company(ies) in the past twelve months. However ASBL's associates may have managed or co-managed public offering of securities for the subject company(ies) in the past twelve months.
- Research Analysts have not served as an officer, director or employee of the companies mentioned in the report.
- Neither ASBL nor its Research Analysts have been engaged in market making activity for the companies mentioned in the report.

Disclaimer

The research recommendation and information herein are solely for the personal information of the authorized recipient and does not construe to be an offer documents or any investment, legal or taxation advice or solicitation of any action based upon it. This report is not for public distribution or use by any person or entity, where such distribution, publication, availability or use would be contrary to law, regulation or subject to any registration or licensing requirement. We will not treat recipients as customer by virtue of their receiving this report. The report is based upon the information obtained from public sources that we consider reliable, but we do not guarantee its accuracy or completeness. ASBL shall not be in anyways responsible for any loss or damage that may arise to any such person from any inadvertent error in the information contained in this report. The recipients of this report should rely on their own investigations.