

Technical Report

Closing Brief

Markets closed in green amid renewed buying interest as investors turned bullish ahead of earnings of index heavy weights TCS and Reliance. Nifty reclaimed 10000 levels in a late session rally and closed at 10096.40 up by 111.60 points or 1.12%

Technical Build up

- ❖ Bullish candle with decrease in volume
- ❖ Buy crossover in oscillators.
- ❖ Upper band of Bollinger exist at 10231
- ❖ Crucial moving average of 20/50 SMA are at 9973 and 9943
- ❖ 200 SMA trend deciding level exist at 9350

Outlook for the day

Indian Equity market gained over a percent and ended around the day's high, buoyed by firm local cues. Sentiment boosted on the news of jump in the direct tax collection figure in the first six months of the current fiscal. On the technical front, Nifty formed strong bullish candle and closed above the 10000 level mark, which augers well for the bulls. Technically speaking, yesterday Nifty also surpassed the 78.6% retracement of recent down move which would further indicates that Nifty is in the path to cross the previous high. During the day, immediate support around 10000 levels and next support at 9950 levels. Immediate resistance is there around 10110 and next resistance around 10170 levels. On the option front maximum Put OI is at 10000 followed by 9900 and 10000 strike while maximum Call OI is seen at 10100 followed by 10000 strike

Technical & Derivative Report

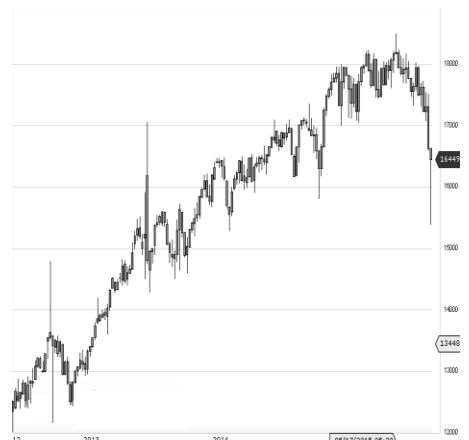
World Indices	LTP	Daily Ch(Pts)	Daily Ch(%)
Dow Jones	22841	-31	-0.14
Nasdaq	6591	-12	-0.18
S&P 500	2550	-4	-0.17
FTSE 100	7556	22	0.30
DAX	12982	12	0.09
Hang Seng	28447	-11	-0.04
Nikkei	21021	66	0.32
Sensex	32182	348	1.09
Nifty	10096	111	1.12

Commodity /Forex	LTP	Daily 1.1Ch(Pts)	Daily Ch(%)
Gold (\$/Oz)	1297.40	0.90	0.07
Silver (\$/Oz)	17.27	0.00	0.02
Copper(USD/lb.)	312.30	0.30	0.10
Brent			
Crude(USD/bbl)	56.46	0.21	0.37
USD/INR	65.08	-0.05	-0.08
USD/YEN	112.21	-0.07	-0.06
USD/EUR	1.1844	0.0014	0.12

Support/Resistance levels for Indian Equity Indices					
	S1	S2	CMP	R1	R2
Sensex	31875	31710	32182	32245	32440
Nifty	10000	9950	10092	10110	10170
Nifty (Fut)	10015	9965	10111	10125	10185

Pivot Level		
Sensex		32068
Nifty		10059

US: US Market closed lower on Thursday as Wall Street digested earnings from some of the top financial companies. Technically DJIA is presently trading at the 5th leg through Elliot wave count with negative divergence in oscillators.



Increase in OI with Increase in Price (Long Buildup)

Symbol	Prev OI	Curr OI	OI Chg (%)	Curr Pr.	Pr.Ch g (%)
NBCC	2916000	4800000	64.6	242.85	9.5
HINDALCO	3567550	4505550			
CO	0	0	26.3	264.5	6
NIITTEC					
H	762000	948000	24.4	614.7	3.3
NESTLEIND	94000	112800	20	7414.65	1.6
BRITANNIA					
NIA	640600	746800	16.6	4589.9	4.5

Increase in OI with Decrease in Price (Short Buildup)

Symbol	Prev OI	Curr OI	OI Chg (%)	Curr Pr.	Pr.Chg (%)
CANFINHOME	739000	3561250	381.9	526	[79.5]
	3016800	3520800			
PFC	0	0	16.7	120.35	[1.0]
GRASIM	3834000	4155000	8.4	1142.5	[1.0]
JISLJALE	4282200	4544100			
QS	0	0	6.1	93.5	[1.8]
BANKINDIA	1885800	1996800			
DIA	0	0	5.9	132.05	[2.3]

Nifty gained by 1.12% with Nifty future added 11.9 lakh shares in open interest and stock future added 510.8 Lakh shares in open interest.

- Nifty PCR increased to 1.50 from 1.39
- Total Nifty Calls shaded 20.4 lakh shares in open interest.
- Total Nifty Puts added 63.9 lakh shares in open interest.
- Maximum open interest (Nifty) in Calls for Oct series is at 10000 and 10000 put.
- FII's sold net Rs.668.13 Cr(provisional), while DIIs bought net Rs.872.54 Cr in cash market.
- FII bought net Rs.1080.30 Cr in F&O
- Securities in Ban Period: BEML, DHFL, IBREALEST, JSWENERGY, RCOM & RELCAPITAL

Nifty Tracker

PARTICULARS	12/10/2017	11/10/2017	10/10/2017	09/10/2017
Spot	10096.4	9984.8	10016.95	9988.75
% Change in Spot	1.12%	-0.32%	0.28%	0.09%
Nifty(FUT) Oct	10111.4	9992.5	10035.7	10016.55
Nifty(FUT) Oct Vol.	115831	129457	59681	67207
Nifty(FUT) Oct - OI	26359725	25267950	24231300	23653950
Nifty(FUT) Nov	10140.6	10023.6	10067.4	10047.3
Nifty(FUT) Nov Vol.	4126	4293	2080	2412
Nifty(FUT) Nov - OI	1262550	1187250	1177275	18171.2

Trade Statistics for 12/10/2017

PARTICULARS	NO. OF CONTRACTS	TURNOVER (RS. CR.)	PUT CALL RATIO
NSE Index Futures	2,11,813	17896	-
NSE Stock Futures	5,88,816	44574	-
NSE Index Options	1,11,44,488	10,30,607.63	-
NSE Stock Options	4,38,328	35090	0.47
NSE F&O Total Turnover	1,23,83,445	1,128,169	0.88
NSE Cash Turnover	-	27,360.23	-
BSE Cash Turnover	-	3,621.09	-
Total Turnover	-	1159150	-

FII Corner (F&O)

FII NET BUYING/SELLING & CHANGE IN OPEN INTEREST (Cr. Rupee)						
PARTICULARS	12/10/2017		11/10/2017		10/10/2017	
	Net Buying /Selling	Change In Open interest	Net Buying /Selling	Change In Open interest	Net Buying /Selling	Change In Open interest
Index Future	263	1386	768	569	-391	154
Index option	-24	969	486	4306	222	2107
Stock Future	742	1630	885	-83	436	784
Stock option	99	342	-37	223	104	463
Total	1080	4326	2102	5015	371	3508

Market Open Interest

ADDITION/REDUCTION IN MARKET OPEN INTEREST					
Contracts	12/10/2017	11/10/2017	10/10/2017	09/10/2017	06/10/2017
Index Futures	1021	1729	757	479	-39
Index Options	2892	-1102	2443	1403	2155
Stock Futures	16931	13341	6970	9547	-27796
Stock Options	933	1154	1326	1203	1336
F&O Total	21777	15122	11495.24	12632.42	-24343.86

Nifty Option Open Interest Statistics

NIFTY OPTIONS HIGHEST ADDITION IN OPEN INTEREST						
Expiry	Strike	Option Type	Settlement Price	Volume	Open Interest	Change In OI
26-Oct-17	10000	PE	42.3	279473	6549300	1257600
26-Oct-17	10100	PE	71.75	96450	2450625	1107525
26-Oct-17	9900	PE	26.7	217737	5959050	1028400
28-Dec-17	8600	CE	1521	5008	811875	375600
26-Oct-17	9700	PE	11.7	87317	4089075	358575
26-Oct-17	9500	PE	5.65	39780	3938775	316500
28-Dec-17	8500	CE	1660	4087	1110550	300750
30-Nov-17	9700	PE	41.8	9970	1092675	293775
28-Dec-17	8400	CE	1672	3586	953700	266875
26-Oct-17	9950	PE	33.3	35754	869250	261825

NIFTY OPTIONS HIGHEST REDUCTION IN OPEN INTEREST						
Expiry	Strike	Option Type	Settlement Price	Volume	Open Interest	Change In OI
26-Oct-17	10000	CE	145	185995	3795000	-1248150
26-Oct-17	10100	CE	77.5	265212	3777900	-982275
26-Oct-17	8500	CE	1598.4	4760	779850	-290250
26-Oct-17	8200	CE	1893.75	3933	2482425	-284325
26-Oct-17	8300	CE	1778.95	3752	30525	-281250
26-Oct-17	8400	CE	1690.45	3707	237300	-270825
26-Oct-17	10200	CE	32.6	178100	3096450	-269325
26-Oct-17	9900	CE	229.55	34234	2649225	-239175
26-Oct-17	10050	CE	107.55	28774	513825	-168075
26-Oct-17	9600	PE	8	50126	2517900	-160725

Stock Option Open Interest Statistics

STOCK OPTIONS WITH HIGHEST ADDITION IN OPEN INTEREST							
Symbol	Expiry	Strike	Option Type	Settl. Price	Volume	Open Interest	Change in OI
JPASSOCIAT	26-Oct-17	22.5	CE	0.3	160	10064000	3536000
HINDALCO	26-Oct-17	260	PE	4.8	1390	2019500	1981000
HINDALCO	26-Oct-17	250	PE	2.3	2319	2702000	1862000
SOUTHBANK	26-Oct-17	30	PE	0.5	219	7556148	1557627
SOUTHBANK	26-Oct-17	27.5	PE	0.15	161	10174287	1259358
JPASSOCIAT	26-Oct-17	20	CE	0.8	115	14620000	1156000
HINDALCO	26-Oct-17	240	PE	1.15	1357	2695000	1141000
GMRINFRA	26-Oct-17	17.5	CE	0.2	353	24210000	1125000
HINDALCO	26-Oct-17	255	PE	3.35	995	1088500	1025500
HINDALCO	26-Oct-17	280	CE	1.6	1755	1305500	1011500

STOCK OPTIONS WITH HIGHEST REDUCTION IN OPEN INTEREST							
Symbol	Expiry	Strike	Option Type	Settl. Price	Volume	Open Int.	Change in OI
HINDALCO	26-Oct-17	250	CE	16.5	994	889000	-868000
IDFC	26-Oct-17	65	CE	2.75	549	3128400	-712800
RELIANCE	26-Oct-17	850	CE	33.25	2729	706000	-541000
JINDALSTEL	26-Oct-17	160	CE	6.4	1758	2079000	-400500
JINDALSTEL	26-Oct-17	155	CE	9.75	850	571500	-378000
RCOM	26-Oct-17	20	CE	0.05	34	11354000	-350000
RCOM	26-Oct-17	15	PE	0.15	64	8008000	-350000
TV18BRDCST	26-Oct-17	45	CE	0.3	605	5321000	-340000
ASHOKLEY	26-Oct-17	130	CE	1.5	653	5754000	-336000
VEDL	26-Oct-17	310	CE	14.65	474	430500	-336000

Research Team

Name	Designation	Email ID	Contact No.
Paras Bothra	President Equity Research	paras@ashikagroup.com	+91 22 6611 1704
Krishna Kumar Agarwal	Equity Research Analyst	krishna.a@ashikagroup.com	+91 33 4036 0646
Partha Mazumder	Equity Research Analyst	partha.m@ashikagroup.com	+91 33 4036 0647
Arijit Malakar	Equity Research Analyst	amalakar@ashikagroup.com	+91 33 4036 0644
Kapil Jagasia	Equity Research Analyst	kapil.j@ashikagroup.com	+91 22 6611 1715
Tirthankar Das	Technical & Derivative Analyst	tirthankar.d@ashikagroup.com	+91 33 4036 0645

Ashika Stock Broking Limited ("ASBL") or Research Entity has started its journey in the year 1994 and is engaged in the business of broking services, depository services, distributor of financial products (Mutual fund, IPO & Bonds). This research report has been prepared and distributed by ASBL in the sole capacity of a Research Analyst (Reg No. INH00000206) of SEBI (Research Analyst) Regulations 2014. ASBL is a wholly owned subsidiary of Ashika Global Securities (P) Ltd., a RBI registered non-deposit taking NBFC Company. Ashika group (details is enumerated on our website www.ashikagroup.com) is an integrated financial service provider inter alia engaged in the business of Investment Banking, Corporate Lending, Commodity Broking, Debt Syndication & Other Advisory Services.

There were no significant and material disciplinary actions against ASBL taken by any regulatory authority during last three years.

Disclosure

ASBL or its associates, its Research Analysts (including their relatives) may have financial interest in the subject company(ies). However, the said financial interest is not limited to having an open stock market position in /acting as advisor to /having a loan transaction with the subject company(ies) apart from registration as clients.

- 1) ASBL or its Research Analysts (including their relatives) do not have any actual / beneficial ownership of 1% or more of securities of the subject company(ies) at the end of the month immediately preceding the date of publication of this report or date of the public appearance. However ASBL's associates may have actual / beneficial ownership of 1% or more of securities of the subject company(ies).
- 2) ASBL or their Research Analysts (including their relatives) do not have any other material conflict of interest at the time of publication of this research report or date of the public appearance. However ASBL's associates might have an actual / potential conflict of interest (other than ownership).
- 3) ASBL or its associates may have received compensation for investment banking, merchant banking, and brokerage services and for other products and services from the subject companies during the preceding 12 months. However, ASBL or its associates or its Research analysts (forming part of Research Desk) have not received any compensation or other benefits from the subject companies or third parties in connection with the research report. Moreover, Research Analysts have not received any compensation from the companies mentioned herein in the past twelve months.
- 4) ASBL or their Research Analysts have not managed or co-managed public offering of securities for the subject company(ies) in the past twelve months. However ASBL's associates may have managed or co-managed public offering of securities for the subject company(ies) in the past twelve months.
- 5) Research Analysts have not served as an officer, director or employee of the companies mentioned in the report.
- 6) Neither ASBL nor its Research Analysts have been engaged in market making activity for the companies mentioned in the report.

Disclaimer

The research recommendation and information herein are solely for the personal information of the authorized recipient and does not construe to be an offer documents or any investment, legal or taxation advice or solicitation of any action based upon it. This report is not for public distribution or use by any person or entity, where such distribution, publication, availability or use would be contrary to law, regulation or subject to any registration or licensing requirement. We will not treat recipients as customer by virtue of their receiving this report. The report is based upon the information obtained from public sources that we consider reliable, but we do not guarantee its accuracy or completeness. ASBL shall not be in anyways responsible for any loss or damage that may arise to any such person from any inadvertent error in the information contained in this report. The recipients of this report should rely on their own investigations.