

Technical Report

Closing Brief

Nifty witnessed an extremely volatile session with the index gyrating in the range of 60 points that was breached at both ends in the last hour of trade. The benchmark index at the end of the day eked out gains of 0.12% closing at 10321.75.

Technical Build up

- ❖ Bullish candle with increase in volume
- ❖ Sell crossover in oscillators.
- ❖ Upper band of Bollinger exist at 10490
- ❖ Crucial moving average of 20/50 SMA are at 10304 and 10105
- ❖ 200 SMA trend deciding level exist at 9557

Outlook for the day

Indian Equity market traded volatile and managed to settle marginally higher, in continuation to prevailing corrective phase. GST council's decision to reduce tax rate on a host of daily-use items lead to positivity in the market. On the other hand, the IIP for the month of September 2017 came in below street estimates at 3.8% vs 4.3% (expected). Now next to watch out for will be the inflation numbers which will be coming today. On the technical front, Nifty formed a 'Hammer' like candle on the daily chart while on the weekly chart 'Star' formation indicates uncertainty could continue. It has been making lower highs – lower lows from last four trading sessions. The recent correction lead Nifty towards its strong support zone of 10170 – 10250 which is a confluence of 'Gap' area on a daily chart, previous breakout level of 'Rectangle' pattern, 'Super Trend' indicator on the daily chart and 38.20% retracement level of the recent rally from 9687.55 to 10482.64. During the day Nifty has support placed at 10230-10240 below which 10170 opens up. Resistances for the index are placed at 10370-10380 and 10500. On the option front, maximum Put OI is shifting at 10200 followed by 10000 strikes while maximum Call OI is at 10500 followed by 10400 strikes

Technical & Derivative Report

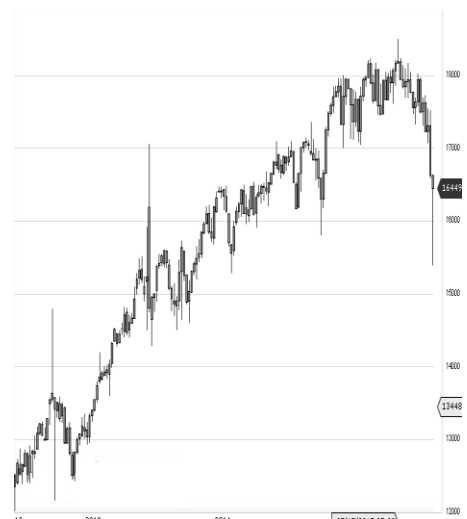
World Indices	LTP	Daily Ch(Pts)	Daily Ch(%)
Dow Jones	23422	-39	-0.17
Nasdaq	6750	-	0.01
S&P 500	2582	-2	-0.09
FTSE 100	7432	-51	-0.68
DAX	13127	-55	-0.42
Hang Seng	29213	92	0.32
Nikkei	22563	-118	-0.51
Sensex	33314	63	0.19
Nifty	10321	12	0.12

Commodity /Forex	LTP	Daily 1.1Ch(Pts)	Daily Ch(%)
Gold (\$/Oz)	1276.30	2.10	0.16
Silver (\$/Oz)	16.90	0.03	0.17
Copper(USD/lb.)	307.85	0.25	0.08
Brent			
Crude(USD/bbl)	63.60	0.08	0.13
USD/INR	65.16	0.22	0.34
USD/YEN	113.66	0.13	0.11
USD/EUR	1.1648	-0.0017	-0.15

Support/Resistance levels for Indian Equity Indices					
	S1	S2	CMP	R1	R2
Sensex	33010	32815	33314	33475	33905
Nifty	10230	10170	10321	10370	10500
Nifty (Fut)	10245	10185	10334	10385	10515

Pivot Level	
Sensex	33267
Nifty	10306

US: US Market closed mostly lower on Friday as they snapped multi-week winning streaks while some of the largest tech stocks pulled back. Technically DJIA is presently trading at the 5th leg through Elliot wave count with negative divergence in oscillators.



Increase in OI with Increase in Price (Long Buildup)						Increase in OI with Decrease in Price (Short Buildup)					
Symbol	Prev OI	Curr OI	OI Chg (%)	Curr Pr.	Pr.Chg (%)	Symbol	Prev OI	Curr OI	OI Chg (%)	Curr Pr.	Pr.Chg (%)
JUSTDIAL						OFSS	60750	87150	43.5	3655.55	[0.5]
L	3790800	5527200	45.8	493.5	6.8	BANKIN	1339800	1570200			
MRF	49470	60750	22.8	67799.85	3.7	DIA	0	0	17.2	197.2	[1.9]
GODFREY						OIL	2658018	2972992	11.9	358.75	[1.7]
PHLP	593500	683000	15.1	1041	4.6	HAVELLS	5232000	5776000	10.4	503.5	[3.0]
	6352200	7242000				AUROP	2059920	2244480			
SBIN	0	0	14	334.6	6	HARMA	0	0	9	745	[6.1]
	1108350	1234500									
LT	0	0	11.4	1274.9	4.3						

Derivative Report

Technical & Derivative Report

Nifty gained by 0.12% with Nifty future added 10.3 lakh shares in open interest and stock future added 307.0 Lakh shares in open interest.

- Nifty PCR decreased to 1.33 from 1.35
- Total Nifty Calls added 16.9 lakh shares in open interest.
- Total Nifty Puts added 7.2 lakh shares in open interest.
- Maximum open interest (Nifty) in Calls for Oct series is at 10500 and 10200 put.
- FII's sold net Rs.529.22 Cr(provisional), while DIIs bought net Rs.1920.87 Cr in cash market.
- FII sold net Rs.2423.65 Cr in F&O
- Securities in Ban Period: DHFL, HDIL, IBREALEST, INDIACEM, INFIBEAM, JETAIRWAYS, JISJALEQS, JSWENERGY, JUSTDIAL & RCOM

Nifty Tracker

PARTICULARS	10/11/2017	09/11/2017	08/11/2017	07/11/2017
Spot	10321.75	10308.95	10303.15	10350.15
% Change in Spot	0.12%	0.06%	-0.45%	-0.97%
Nifty(FUT) Nov	10334	10361.8	10354.9	10409.9
Nifty(FUT) Nov Vol.	125213	118648	111446	179412
Nifty(FUT) Nov - OI	25731975	24716925	24655500	24719700
Nifty(FUT) Dec	10366.3	10400.7	10393.1	10453.15
Nifty(FUT) Dec Vol.	5747	6489	8375	6734
Nifty(FUT) Dec - OI	1457925	1446450	1331625	1184025

Trade Statistics for 10/11/2017

PARTICULARS	NO. OF CONTRACTS	TURNOVER (RS. CR.)	PUT CALL RATIO
NSE Index Futures	2,25,631	19777	-
NSE Stock Futures	8,66,069	64253	-
NSE Index Options	44,17,182	4,03,655.04	-
NSE Stock Options	6,49,022	51377	0.5
NSE F&O Total Turnover	61,57,904	539,062	0.84
NSE Cash Turnover	-	36,053.13	-
BSE Cash Turnover	-	4,963.54	-
Total Turnover	-	580079	-

FII Corner (F&O)

FII NET BUYING/SELLING & CHANGE IN OPEN INTEREST (Cr. Rupee)						
	10/11/2017		09/11/2017		08/11/2017	
PARTICULARS	Net Buying /Selling	Change In Open interest	Net Buying /Selling	Change In Open interest	Net Buying /Selling	Change In Open interest
Index Future	-1785	1525	-1112	200	-602	738
Index option	30	2297	1782	-1596	-517	498
Stock Future	-125	712	-986	1088	-2288	797
Stock option	-544	-30	-74	481	-26	186
Total	-2424	4504	-390	173	-3433	2218

Market Open Interest

ADDITION/REDUCTION IN MARKET OPEN INTEREST					
Contracts	10/11/2017	09/11/2017	08/11/2017	07/11/2017	06/11/2017
Index Futures	1239	255	-3	-1731	582
Index Options	1070	1898	470	-3202	1564
Stock Futures	-34295	18199	8770	10926	7123
Stock Options	953	887	1559	1160	1068
F&O Total	-31032	21239	10796.08	7152.55	10337.47

Nifty Option Open Interest Statistics

NIFTY OPTIONS HIGHEST ADDITION IN OPEN INTEREST						
Expiry	Strike	Option Type	Settlement Price	Volume	Open Interest	Change In OI
30-Nov-17	10300	CE	124.6	128273	3270075	688125
30-Nov-17	10300	PE	93.6	217960	4909050	663000
30-Nov-17	10100	PE	39.5	102192	4055625	508275
30-Nov-17	10450	CE	56.2	26584	902400	374700
30-Nov-17	10200	CE	184.5	19048	1318350	205125
30-Nov-17	10600	CE	19.65	135630	3801525	199200
28-Dec-17	10000	PE	68.2	10966	5431650	156300
30-Nov-17	10200	PE	62.25	176777	5618700	121950
28-Dec-17	10300	PE	141.9	8215	967425	110175
28-Dec-17	10600	CE	73.25	7319	861675	99600

NIFTY OPTIONS HIGHEST REDUCTION IN OPEN INTEREST						
Expiry	Strike	Option Type	Settlement Price	Volume	Open Interest	Change In OI
30-Nov-17	10000	PE	26.95	77753	4981875	-445275
30-Nov-17	10400	PE	138.65	89223	2104275	-326550
30-Nov-17	11000	CE	1.95	19628	1859850	-155925
30-Nov-17	10900	CE	2.7	25416	1337550	-109125
30-Nov-17	10400	CE	74.3	265699	3754200	-105225
30-Nov-17	10250	PE	74.6	16571	251400	-90225
30-Nov-17	10800	CE	4	34293	2959725	-60750
28-Dec-17	10500	PE	231.05	3320	1491675	-55725
26-Dec-19	10000	PE	416.5	539	159000	-40425
30-Nov-17	10550	CE	29.4	11933	372150	-35100

Stock Option Open Interest Statistics

STOCK OPTIONS WITH HIGHEST ADDITION IN OPEN INTEREST							
Symbol	Expiry	Strike	Option Type	Settl. Price	Volume	Open Interest	Change in OI
SBIN	30-Nov-17	300	PE	3	9528	6573000	2304000
JPASSOCIAT	30-Nov-17	20	CE	0.85	833	15232000	1938000
SUZLON	30-Nov-17	15	CE	1.15	150	6900000	1770000
SBIN	30-Nov-17	320	PE	6.65	6484	3096000	1533000
ASHOKLEY	30-Nov-17	120	CE	1.35	1028	3843000	1491000
TATAMOTORS	30-Nov-17	440	CE	9.4	5135	3027000	1458000
SBIN	30-Nov-17	300	CE	37.6	1162	3018000	1389000
SUZLON	30-Nov-17	15	PE	0.6	160	10920000	1290000
ASHOKLEY	30-Nov-17	115	CE	2.45	850	2478000	1288000
SBIN	30-Nov-17	330	PE	10.3	3160	1614000	1179000

STOCK OPTIONS WITH HIGHEST REDUCTION IN OPEN INTEREST							
Symbol	Expiry	Strike	Option Type	Settl. Price	Volume	Open Int.	Change in OI
SBIN	30-Nov-17	330	CE	14.05	11432	3072000	-2487000
GMRINFRA	30-Nov-17	22.5	CE	0.15	63	18045000	-990000
SAIL	30-Nov-17	80	CE	4.4	761	3864000	-984000
SBIN	30-Nov-17	320	CE	20.75	10026	4101000	-894000
SAIL	30-Nov-17	85	CE	2.35	1693	6276000	-876000
SBIN	30-Nov-17	310	PE	4.45	7704	3405000	-837000
NHPC	30-Nov-17	30	CE	0.4	124	9234000	-810000
SBIN	30-Nov-17	340	CE	9.45	9307	3075000	-570000
RCOM	30-Nov-17	20	CE	0.05	45	7490000	-546000
ASHOKLEY	30-Nov-17	115	PE	4.85	421	854000	-532000

Research Team

Name	Designation	Email ID	Contact No.
Paras Bothra	President Equity Research	paras@ashikagroup.com	+91 22 6611 1704
Krishna Kumar Agarwal	Equity Research Analyst	krishna.a@ashikagroup.com	+91 33 4036 0646
Partha Mazumder	Equity Research Analyst	partha.m@ashikagroup.com	+91 33 4036 0647
Arijit Malakar	Equity Research Analyst	amalakar@ashikagroup.com	+91 33 4036 0644
Kapil Jagasia	Equity Research Analyst	kapil.j@ashikagroup.com	+91 22 6611 1715
Tirthankar Das	Technical & Derivative Analyst	tirthankar.d@ashikagroup.com	+91 33 4036 0645

Ashika Stock Broking Limited ("ASBL") or Research Entity has started its journey in the year 1994 and is engaged in the business of broking services, depository services, distributor of financial products (Mutual fund, IPO & Bonds). This research report has been prepared and distributed by ASBL in the sole capacity of a Research Analyst (Reg No. INH000000206) of SEBI (Research Analyst) Regulations 2014. ASBL is a wholly owned subsidiary of Ashika Global Securities (P) Ltd., a RBI registered non-deposit taking NBFC Company. Ashika group (details is enumerated on our website www.ashikagroup.com) is an integrated financial service provider inter alia engaged in the business of Investment Banking, Corporate Lending, Commodity Broking, Debt Syndication & Other Advisory Services.

There were no significant and material disciplinary actions against ASBL taken by any regulatory authority during last three years.

Disclosure

ASBL or its associates, its Research Analysts (including their relatives) may have financial interest in the subject company(ies). However, the said financial interest is not limited to having an open stock market position in /acting as advisor to /having a loan transaction with the subject company(ies) apart from registration as clients.

- 1) ASBL or its Research Analysts (including their relatives) do not have any actual / beneficial ownership of 1% or more of securities of the subject company(ies) at the end of the month immediately preceding the date of publication of this report or date of the public appearance. However ASBL's associates may have actual / beneficial ownership of 1% or more of securities of the subject company(ies).
- 2) ASBL or their Research Analysts (including their relatives) do not have any other material conflict of interest at the time of publication of this research report or date of the public appearance. However ASBL's associates might have an actual / potential conflict of interest (other than ownership).
- 3) ASBL or its associates may have received compensation for investment banking, merchant banking, and brokerage services and for other products and services from the subject companies during the preceding 12 months. However, ASBL or its associates or its Research analysts (forming part of Research Desk) have not received any compensation or other benefits from the subject companies or third parties in connection with the research report. Moreover, Research Analysts have not received any compensation from the companies mentioned herein in the past twelve months.
- 4) ASBL or their Research Analysts have not managed or co-managed public offering of securities for the subject company(ies) in the past twelve months. However ASBL's associates may have managed or co-managed public offering of securities for the subject company(ies) in the past twelve months.
- 5) Research Analysts have not served as an officer, director or employee of the companies mentioned in the report.
- 6) Neither ASBL nor its Research Analysts have been engaged in market making activity for the companies mentioned in the report.

Disclaimer

The research recommendation and information herein are solely for the personal information of the authorized recipient and does not construe to be an offer documents or any investment, legal or taxation advice or solicitation of any action based upon it. This report is not for public distribution or use by any person or entity, where such distribution, publication, availability or use would be contrary to law, regulation or subject to any registration or licensing requirement. We will not treat recipients as customer by virtue of their receiving this report. The report is based upon the information obtained from public sources that we consider reliable, but we do not guarantee its accuracy or completeness. ASBL shall not be in anyways responsible for any loss or damage that may arise to any such person from any inadvertent error in the information contained in this report. The recipients of this report should rely on their own investigations.