

# Technical Report

## Closing Brief

Nifty witnessed a volatile session in yesterday's trade with the index gyrating in a 50 point range ahead of the inflation numbers that are due post market hours. The benchmark index ended the day at 8805.05 closing flat

## Technical Build up

- ❖ Bearish Hanging Man candle with decrease in volume
- ❖ Buy crossover in oscillators.
- ❖ Upper band of Bollinger exist at 8933
- ❖ Crucial moving average of 20/50 SMA are at 8551 and 8307
- ❖ 200 SMA trend deciding level exist at 8365

## Outlook for the day

Indian Equity market failed to make any decisive move for yet another session and closed flat, extending their consolidation phase. Investor sentiment was upbeat as Asian shares ticked up on renewed optimism over US President Trump's tax reform plans and his change of tack to agree to honour the "one China" policy. On the technical front, Nifty has formed yet another doji candle indicating indecisiveness to persist, Nifty is presently trading in a range of 8715-8821 for the last few trading session, breaching the same shall give next movement on Nifty. Nifty presently has supports near 8645-8660 zones, where its previous swing highs and cluster of short term moving averages are placed, while on the upside its previous major swing highs zone of 8890-8900 might act as resistance for the week, and breach of the same shall trigger another 100-150 points move on the upside. On the F&O front incremental built-up in futures was seen while on the option front data suggest addition was seen in 8800 & 87800 PE.

## Technical & Derivative Report

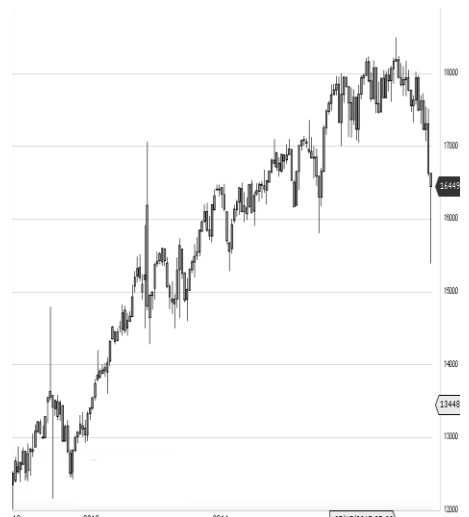
World Indices	LTP	Daily Ch(Pts)	Daily Ch(%)
Dow Jones	20412	142	0.70
Nasdaq	5763	29	0.52
S&P 500	2328	12	0.52
FTSE 100	7278	20	0.28
DAX	11774	107	0.92
Hang Seng	23660	-50	-0.21
Nikkei	19431	-27	-0.14
Sensex	28351	17	.06
Nifty	8805	11	0.13

Commodity /Forex	LTP	Daily Ch(Pts)	Daily Ch(%)
Gold (\$/Oz)	1226.20	0.40	0.03
Silver (\$/Oz)	17.84	0.02	0.11
Copper(USD/lb.)	278.40	0.10	0.04
Brent Crude(USD/bbl)	55.75	0.16	0.29
USD/INR	67.01	0.13	0.20
USD/YEN	113.74	-	-
USD/EUR	1.0592	-0.0006	-0.06

Support/Resistance levels for Indian Equity Indices					
	S1	S2	CMP	R1	R2
Sensex	28200	28070	28351	28470	28565
Nifty	8760	8720	8805	8840	8870
Nifty (Fut)	8770	8730	8815	8850	8880

Pivot Level	
Sensex	28335
Nifty	8795

**US:** US market climbed to new record highs Monday as investors remained bullish on President Donald Trump's economic agenda. Technically DJIA is presently trading at the 5th leg through Elliot wave count with negative divergence in oscillators.



Increase in OI with Increase in Price (Long Buildup)					
Symbol	Prev OI	Curr OI	OI Chg (%)	Curr Pr.	Pr.Chg (%)

Increase in OI with Decrease in Price (Short Buildup)					
Symbol	Prev OI	Curr OI	OI Chg (%)	Curr Pr.	Pr.Chg (%)

Ashika Stock Broking Limited

Nifty gained by 0.13% with Nifty future added 7.5 lakh shares in open interest and stock future added 47.7 Lakh shares in open interest.

- Nifty PCR increased to 1.12 from 1.11
- Total Nifty Calls added 5.1 lakh shares in open interest.
- Total Nifty Puts added 10.7 lakh shares in open interest.
- Maximum open interest (Nifty) in Calls for Jan series is at 9000 and 8500 put.
- FII's bought net Rs.306.74 Cr(provisional), while DIIs sold net Rs.171.7 Cr in cash market.
- FII bought net Rs.273.89 Cr in F&O
- Securities in Ban Period: BANKINDIA, CEATLTD, HDIL, IFCI, JINDALSTEL, JPASSOCIAT, ORIENTBANK. RCOM, UNIONBANK & WOCKPHARMA

## Nifty Tracker

PARTICULARS	13/02/2017	10/02/2017	09/02/2017	08/02/2017
Spot	8805.05	8793.55	8778.4	8769.05
% Change in Spot	0.13%	0.17%	0.11%	0.01%
Nifty(FUT) Feb	8815.35	8809.35	8796.85	8796.35
Nifty(FUT) Feb Vol.	118500	87575	155576	116252
Nifty(FUT) Feb - OI	22318275	21685425	21760950	21768225
Nifty(FUT) Mar	8846.3	8839.95	8828.4	8828.3
Nifty(FUT) Mar Vol.	5738	3572	7178	4949
Nifty(FUT) Mar - OI	1698900	1599450	1558575	1415025

## Trade Statistics for 13/02/2017

PARTICULARS	NO. OF CONTRACTS	TURNOVER (RS. CR.)	PUT CALL RATIO
NSE Index Futures	1,61,614	11714	-
NSE Stock Futures	5,61,696	40451	-
NSE Index Options	27,39,375	1,99,213.44	-
NSE Stock Options	4,22,520	31544	0.49
NSE F&O Total Turnover	38,85,205	282,923	0.87
NSE Cash Turnover	-	22,246.92	-
BSE Cash Turnover	-	3,050.89	-
Total Turnover	-	308221	-

## FII Corner (F&O)

FII NET BUYING/SELLING & CHANGE IN OPEN INTEREST (Cr. Rupee)						
PARTICULARS	13/02/2017		10/02/2017		09/02/2017	
	Net Buying /Selling	Change In Open interest	Net Buying /Selling	Change In Open interest	Net Buying /Selling	Change In Open interest
Index Future	754	951	243	168	600	489
Index option	178	619	852	2933	1373	550
Stock Future	-393	394	76	378	-165	901
Stock option	-265	240	-274	329	150	449
Total	274	2204	897	3807	1958	2389

## Market Open Interest

ADDITION/REDUCTION IN MARKET OPEN INTEREST					
Contracts	13/02/2017	10/02/2017	09/02/2017	08/02/2017	07/02/2017
Index Futures	909	187	-316	444	-309
Index Options	297	205	775	1266	450
Stock Futures	4772	-23915	17078	9974	4355
Stock Options	1004	1520	1185	1434	2139
F&O Total	6982	-22003	18721.87	13117.73	6635.77

## Nifty Option Open Interest Statistics

NIFTY OPTIONS HIGHEST ADDITION IN OPEN INTEREST						
Expiry	Strike	Option Type	Settlement Price	Volume	Open Interest	Change In OI
23-Feb-17	8800	PE	59.05	252899	4298250	466500
23-Feb-17	8700	PE	28.75	223846	5170275	413025
23-Feb-17	8850	CE	46.15	35867	875175	250350
23-Feb-17	8950	CE	16.1	26544	721875	206700
23-Feb-17	9000	CE	9.85	213931	7078050	187125
23-Feb-17	8750	PE	41.2	32790	763800	184125
23-Feb-17	8800	CE	70.9	259183	5034825	169200
30-Mar-17	8500	PE	51.55	8195	1293525	139125
30-Mar-17	8800	PE	130.65	7344	1224000	109350
30-Mar-17	8600	PE	70.75	6488	923550	99600

NIFTY OPTIONS HIGHEST REDUCTION IN OPEN INTEREST						
Expiry	Strike	Option Type	Settlement Price	Volume	Open Interest	Change In OI
23-Feb-17	8500	PE	7.35	127373	5766150	-382425
23-Feb-17	8300	PE	2.7	31103	3632775	-346725
23-Feb-17	8900	CE	28.6	213349	3851100	-210150
23-Feb-17	9100	CE	3.45	60473	2969325	-82950
23-Feb-17	9000	PE	192.75	7571	1186800	-65025
23-Feb-17	8900	PE	114.65	67181	879225	-64575
23-Feb-17	8000	CE	809.75	1199	809100	-62025
23-Feb-17	8000	PE	1.35	10017	2976525	-61800
23-Feb-17	8700	CE	139.05	58455	2661300	-59175
23-Feb-17	8600	CE	222.9	9393	1551750	-58650

## Stock Option Open Interest Statistics

STOCK OPTIONS WITH HIGHEST ADDITION IN OPEN INTEREST							
Symbol	Expiry	Strike	Option Type	Settl. Price	Volume	Open Interest	Change in OI
IFCI	23-Feb-17	30	CE	0.35	913	8888000	4378000
BANKBARODA	23-Feb-17	180	CE	1.15	4561	5148500	4186000
BANKBARODA	23-Feb-17	175	CE	2	2199	2534000	2299500
GMRINFRA	23-Feb-17	17.5	CE	0.1	99	11160000	2115000
BANKBARODA	23-Feb-17	185	CE	0.7	2452	2940000	1991500
HINDALCO	23-Feb-17	190	CE	2.95	3927	5033000	1673000
PNB	23-Feb-17	145	CE	2.2	1372	2996000	1365000
BANKBARODA	23-Feb-17	170	CE	3.55	1644	2163000	1333500
IDEA	23-Feb-17	100	PE	1.85	1129	5439000	1197000
CROMPGREAV	23-Feb-17	70	CE	0.75	314	2100000	1164000

STOCK OPTIONS WITH HIGHEST REDUCTION IN OPEN INTEREST							
Symbol	Expiry	Strike	Option Type	Settl. Price	Volume	Open Int.	Change in OI
RCOM	23-Feb-17	32.5	PE	0.8	243	2064000	-2604000
JPASSOCIAT	23-Feb-17	15	CE	0.05	67	26996000	-2040000
RCOM	23-Feb-17	45	CE	0.05	132	4236000	-1260000
BANKBARODA	23-Feb-17	180	PE	11.95	1605	1102500	-994000
VEDL	23-Feb-17	250	CE	10.75	853	1263500	-882000
SOUTHBANK	23-Feb-17	25	CE	0.05	91	4680000	-810000
BANKBARODA	23-Feb-17	190	PE	20.7	459	570500	-787500
JPASSOCIAT	23-Feb-17	12.5	CE	0.95	24	13804000	-748000
PNB	23-Feb-17	145	PE	4.85	767	1673000	-700000
BANKBARODA	23-Feb-17	175	PE	7.7	1520	710500	-689500

## Research Team

Name	Designation	Email ID	Contact No.
Paras Bothra	President Equity Research	paras@ashikagroup.com	+91 22 6611 1704
Krishna Kumar Agarwal	Equity Research Analyst	krishna.a@ashikagroup.com	+91 33 4036 0646
Partha Mazumder	Equity Research Analyst	partha.m@ashikagroup.com	+91 33 4036 0647
Arijit Malakar	Equity Research Analyst	amalakar@ashikagroup.com	+91 33 4036 0644
Kapil Jagasia, CFA	Equity Research Analyst	kapil.j@ashikagroup.com	+91 22 6611 1715
Tirthankar Das	Technical & Derivative Analyst	tirthankar.d@ashikagroup.com	+91 33 4036 0645

SEBI Registration No. INH000000206

### Disclosure

The Research Analysts and /or Ashika Stock Broking Limited do hereby certify that all the views expressed in this research report accurately reflect their views about the subject issuer(s) or securities. Moreover, they also certify the followings:-

- The Research Analyst or Ashika Stock Broking Limited or his/its Associates or his/its relative, has any financial interest in the subject company (ies) covered in this report. **Yes**
- The Research Analyst or Ashika Stock Broking Limited or his/its Associates or his/its relative, have actual/beneficial ownership of 1% or more in the subject company, at the end of the month immediately preceding the date of the publication of the research report. **No**
- The Research Analyst or Ashika Stock Broking Limited or his/its Associates or his/its relatives has any material conflict of interest at the time of publication of the research report. **No**
- The Research Analyst or Ashika Stock Broking Limited or his/its Associates have received compensation for investment banking or merchant banking or brokerage services or for product other than for investment banking or merchant banking or brokerage services from the companies covered in this report in the past 12 months. **No**
- The Research Analyst or Ashika Stock Broking Limited or his/its Associates have managed or co managed in the previous 12 months any private or public offering of securities for the company (ies) covered in this report. **No**
- The Research Analyst or Ashika Stock Broking Limited or his/its Associates have received any compensation or other benefits from the company (ies) covered in this report or any third party in connection with the Research Report. **No**
- The Research Analyst has served as an officer, director or employee of the company (ies) covered in the research report. **No**
- The Research Analyst or Ashika Stock Broking Limited has been engaged in Market making activity of the company (ies) covered in the research report. **No**

### Disclaimer

This report is for the personal information of the authorized recipient and does not construe to be any investment, legal or taxation advice to you. Ashika Stock Broking Ltd. is not soliciting any action based upon it. This report is not for public distribution and has been furnished to you solely for your information and should not be reproduced or redistributed to any other person in any form. The report is based upon information that we consider reliable, but we do not represent that it is accurate or complete, and it should not be relied upon such. Ashika Stock Broking Ltd. or any of its affiliates or employees shall not be in anyway responsible for any loss or damage that may arise to any person from any inadvertent error in the information contained in this report. Ashika Stock Broking Ltd., or any of its affiliates or employees do not provide, at any time, any express or implied warranty of any kind, regarding any matter pertaining to this report, including without limitation the implied warranties of merchantability, fitness for a particular purpose, and non-infringement. The recipients of this report should rely on their own investigations.