

Technical Report

Closing Brief

Rising USD/INR, 10-Year G-Sec Yield, Brent crude price and poor IIP number had a negative impact in the market. Nifty finally closed at 10224.95 down by 96.80 or -0.94%. Markets around the globe also remained weak on US tax reform uncertainties.

Technical Build up

- ❖ Bearish candle with increase in volume
- ❖ Sell crossover in oscillators.
- ❖ Lower band of Bollinger exist at 10129
- ❖ Crucial moving average of 20/50 SMA are at 10307 and 10111
- ❖ 200 SMA trend deciding level exist at 9566

Outlook for the day

Indian Equity market started the week on feeble note and lost nearly a percent, pressurized by weak local cues and lingering geo-political tension. Investors remained cautious with slower factory output growth, rising crude prices and tax relief on some items under the goods and services tax (GST) expected to threaten the government's fiscal targets. On the technical front, Nifty declined sharply and made a long bearish candle. Bearish crossover registered on MACD, Supertrend indicating negativity in the market. However the correction lead Nifty towards its strong support zone of 10170 – 10250 which is a confluence of 'Gap' area on a daily chart, previous breakout level of 'Rectangle' pattern and 38.20% retracement level of the recent rally from 9687.55 to 10482.64. During the day immediate support for Nifty is placed around 10174 levels below which the next support is placed around 10134 levels. On the higher side, the immediate resistance is placed around 10272 levels and the next resistance is placed around 10322 levels. On the option front, maximum Put OI is shifting at 10200 followed by 10000 strikes while maximum Call OI is at 10500 followed by 10400 strikes

Technical & Derivative Report

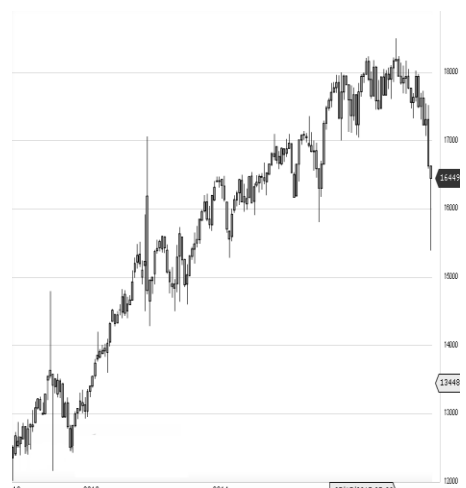
World Indices	LTP	Daily Ch(Pts)	Daily Ch(%)
Dow Jones	23439	17	0.07
Nasdaq	6757	6	0.10
S&P 500	2584	2	0.10
FTSE 100	7415	-17	-0.24
DAX	13074	-53	-0.40
Hang Seng	29273	91	0.31
Nikkei	22473	92	0.41
Sensex	33033	-281	-0.84
Nifty	10224	-96	-0.94

Commodity /Forex	LTP	Daily 1.1Ch(Pts)	Daily Ch(%)
Gold (\$/Oz)	1277.10	-1.80	-0.14
Silver (\$/Oz)	17.02	-0.02	-0.13
Copper(Usd/lb.)	312.45	0.80	0.26
Brent Crude(USD/bbl)	63.13	-0.03	-0.05
USD/INR	65.42	0.26	0.40
USD/YEN	113.65	0.03	0.03
USD/EUR	1.1672	0.0005	0.04

Support/Resistance levels for Indian Equity Indices					
	S1	S2	CMP	R1	R2
Sensex	32870	32720	33033	33185	33370
Nifty	10175	10130	10224	10270	10325
Nifty (Fut)	10220	10175	10269	10315	10370

Pivot Level	
Sensex	33150
Nifty	10258

US: US Market closed slightly higher on Monday amid deal making news, but a decline in General Electric shares, coupled with worries about tax reform, capped gains in the major indexes. Technically DJIA is presently trading at the 5th leg through Elliot wave count with negative divergence in oscillators.



Increase in OI with Increase in Price (Long Buildup)					
Symbol	Prev OI	Curr OI	OI Chg (%)	Curr Pr.	Pr.Chg (%)
BALKRISIND	416000	526400	26.5	2036.5	5.2
BRITANNIA	819000	956800	16.8	4924.85	0.9
M&MFIN	8782500	1E+07	15.4	433.6	3.8
PETRONET	1.4E+07	1.6E+07	14.1	266	0.6
JUBLFOOD	1475000	1683000	14.1	1702.85	2.3

Increase in OI with Decrease in Price (Short Buildup)					
Symbol	Prev OI	Curr OI	OI Chg (%)	Curr Pr.	Pr.Chg (%)
CADILAH C	3694400	4292800	16.2	446	[4.3]
APOLLO HOSP	2285000	2588000	13.3	991	[0.6]
DLF	3.9E+07	4.4E+07	12	203.55	[2.6]
HDFC	1.1E+07	1.2E+07	11.7	1679	[2.1]
ADANIP ORTS	8965000	9900000	10.4	414.85	[4.3]

Derivative Report

Technical & Derivative Report

Nifty declined by 0.94% with Nifty future added 6.7 lakh shares in open interest and stock future added 240.0 Lakh shares in open interest.

- Nifty PCR decreased to 1.22 from 1.33
- Total Nifty Calls added 44.4 lakh shares in open interest.
- Total Nifty Puts shaded 18.6 lakh shares in open interest.
- Maximum open interest (Nifty) in Calls for Oct series is at 10500 and 10000 put.
- FII's sold net Rs.233.56 Cr(provisional), while DIIs sold net Rs.268.77 Cr in cash market.
- FII bought net Rs.287.67 Cr in F&O
- Securities in Ban Period: DHFL, HDIL, IBREALEST, INDIACEM, INFIBEAM, JETAIRWAYS, JISJALEQS, JPASSOCIAT, JSWENERGY & JUSTDIAL

Nifty Tracker

PARTICULARS	13/11/2017	10/11/2017	09/11/2017	08/11/2017
Spot	10224.95	10321.75	10308.95	10303.15
% Change in Spot	-0.94%	0.12%	0.06%	-0.45%
Nifty(FUT) Nov	10269.4	10334	10361.8	10354.9
Nifty(FUT) Nov Vol.	103715	125213	118648	111446
Nifty(FUT) Nov - OI	26027625	25731975	24716925	24655500
Nifty(FUT) Dec	10310.65	10366.3	10400.7	10393.1
Nifty(FUT) Dec Vol.	9548	5747	6489	8375
Nifty(FUT) Dec - OI	1821750	1457925	1446450	1331625

Trade Statistics for 13/11/2017

PARTICULARS	NO. OF CONTRACTS	TURNOVER (RS. CR.)	PUT CALL RATIO
NSE Index Futures	1,64,724	13985	-
NSE Stock Futures	6,85,192	49584	-
NSE Index Options	32,91,620	2,98,196.21	-
NSE Stock Options	5,07,423	38945	0.47
NSE F&O Total Turnover	46,48,959	400,711	0.87
NSE Cash Turnover	-	30,433.49	-
BSE Cash Turnover	-	4,374.91	-
Total Turnover	-	435519	-

FII Corner (F&O)

FII NET BUYING/SELLING & CHANGE IN OPEN INTEREST (Cr. Rupee)						
PARTICULARS	13/11/2017		10/11/2017		09/11/2017	
	Net Buying /Selling	Change In Open interest	Net Buying /Selling	Change In Open interest	Net Buying /Selling	Change In Open interest
Index Future	279	-695	-1785	1525	-1112	200
Index option	367	-1195	30	2297	1782	-1596
Stock Future	-339	-197	-125	712	-986	1088
Stock option	-19	144	-544	-30	-74	481
Total	288	-1942	-2424	4504	-390	173

Market Open Interest

ADDITION/REDUCTION IN MARKET OPEN INTEREST					
Contracts	13/11/2017	10/11/2017	09/11/2017	08/11/2017	07/11/2017
Index Futures	528	1239	255	-3	-1731
Index Options	-601	1070	1898	470	-3202
Stock Futures	8790	-34295	18199	8770	10926
Stock Options	1088	953	887	1559	1160
F&O Total	9805	-31032	21238.96	10796.08	7152.55

Nifty Option Open Interest Statistics

NIFTY OPTIONS HIGHEST ADDITION IN OPEN INTEREST						
Expiry	Strike	Option Type	Settlement Price	Volume	Open Interest	Change In OI
30-Nov-17	10400	CE	53.15	196456	4838850	1084650
30-Nov-17	10500	CE	28.1	167271	5523525	948900
30-Nov-17	10300	CE	93.4	123169	4002900	732825
30-Nov-17	10700	CE	6.65	54563	3559575	413775
31-Dec-20	10300	PE	582	3393	353175	254475
30-Nov-17	10350	CE	72.05	18709	675375	139575
30-Nov-17	10450	CE	38	15539	1038975	136575
28-Dec-17	11000	CE	11.85	5809	1100700	121725
30-Nov-17	10250	CE	119.1	4287	150675	87225
30-Nov-17	11200	CE	0.9	1554	173175	87000

NIFTY OPTIONS HIGHEST REDUCTION IN OPEN INTEREST						
Expiry	Strike	Option Type	Settlement Price	Volume	Open Interest	Change In OI
30-Nov-17	10200	PE	79.4	143658	4914900	-703800
30-Nov-17	10100	PE	51	94875	3492300	-563325
30-Nov-17	10300	PE	120.25	155233	4551750	-357300
30-Nov-17	10000	PE	33.65	68819	4669050	-312825
30-Nov-17	10400	PE	176.3	59054	1886475	-217800
30-Nov-17	9300	PE	3.55	6168	626400	-105525
30-Nov-17	10350	PE	146.85	7602	244350	-52950
30-Nov-17	9900	PE	21.8	31855	2163825	-50325
30-Nov-17	10500	PE	248.85	10775	1070250	-42375
30-Nov-17	10600	PE	332.75	2217	513750	-41700

Stock Option Open Interest Statistics

STOCK OPTIONS WITH HIGHEST ADDITION IN OPEN INTEREST							
Symbol	Expiry	Strike	Option Type	Settl. Price	Volume	Open Interest	Change in OI
JPASSOCIAT	30-Nov-17	30	CE	0.2	465	7956000	7242000
SUZLON	30-Nov-17	15	CE	0.5	883	13320000	6420000
JPASSOCIAT	30-Nov-17	25	CE	0.65	2062	10812000	5950000
JPASSOCIAT	30-Nov-17	20	PE	1.1	422	8058000	4692000
JPASSOCIAT	30-Nov-17	27.5	CE	0.3	816	5066000	3434000
JPASSOCIAT	30-Nov-17	22.5	CE	1.3	1887	12172000	3060000
JPASSOCIAT	30-Nov-17	15	PE	0.1	176	5984000	2720000
JPASSOCIAT	30-Nov-17	17.5	PE	0.35	431	7480000	2380000
JPASSOCIAT	30-Nov-17	20	CE	2.55	1032	17442000	2210000
JPASSOCIAT	30-Nov-17	35	CE	0.05	60	2006000	2006000

STOCK OPTIONS WITH HIGHEST REDUCTION IN OPEN INTEREST							
Symbol	Expiry	Strike	Option Type	Settl. Price	Volume	Open Int.	Change in OI
SUZLON	30-Nov-17	20	CE	0.05	583	29220000	-2640000
SUZLON	30-Nov-17	15	PE	0.7	267	9300000	-1620000
JPASSOCIAT	30-Nov-17	17.5	CE	4.3	110	4454000	-884000
ASHOKLEY	30-Nov-17	112.5	PE	3.1	347	546000	-882000
SBIN	30-Nov-17	320	CE	18.65	986	3369000	-732000
RCOM	30-Nov-17	25	CE	0.05	64	4816000	-686000
RCOM	30-Nov-17	17.5	CE	0.05	48	5992000	-658000
RCOM	30-Nov-17	20	CE	0.05	43	6944000	-546000
SBIN	30-Nov-17	310	PE	3.8	1767	2943000	-462000
SBIN	30-Nov-17	330	CE	12.05	1667	2619000	-453000

Research Team

Name	Designation	Email ID	Contact No.
Paras Bothra	President Equity Research	paras@ashikagroup.com	+91 22 6611 1704
Krishna Kumar Agarwal	Equity Research Analyst	krishna.a@ashikagroup.com	+91 33 4036 0646
Partha Mazumder	Equity Research Analyst	partha.m@ashikagroup.com	+91 33 4036 0647
Arijit Malakar	Equity Research Analyst	amalakar@ashikagroup.com	+91 33 4036 0644
Kapil Jagasia	Equity Research Analyst	kapil.j@ashikagroup.com	+91 22 6611 1715
Tirthankar Das	Technical & Derivative Analyst	tirthankar.d@ashikagroup.com	+91 33 4036 0645

Ashika Stock Broking Limited ("ASBL") or Research Entity has started its journey in the year 1994 and is engaged in the business of broking services, depository services, distributor of financial products (Mutual fund, IPO & Bonds). This research report has been prepared and distributed by ASBL in the sole capacity of a Research Analyst (Reg No. INH00000206) of SEBI (Research Analyst) Regulations 2014. ASBL is a wholly owned subsidiary of Ashika Global Securities (P) Ltd., a RBI registered non-deposit taking NBFC Company. Ashika group (details is enumerated on our website www.ashikagroup.com) is an integrated financial service provider inter alia engaged in the business of Investment Banking, Corporate Lending, Commodity Broking, Debt Syndication & Other Advisory Services.

There were no significant and material disciplinary actions against ASBL taken by any regulatory authority during last three years.

Disclosure

ASBL or its associates, its Research Analysts (including their relatives) may have financial interest in the subject company(ies). However, the said financial interest is not limited to having an open stock market position in /acting as advisor to /having a loan transaction with the subject company(ies) apart from registration as clients.

- ASBL or its Research Analysts (including their relatives) do not have any actual / beneficial ownership of 1% or more of securities of the subject company(ies) at the end of the month immediately preceding the date of publication of this report or date of the public appearance. However ASBL's associates may have actual / beneficial ownership of 1% or more of securities of the subject company(ies).
- ASBL or their Research Analysts (including their relatives) do not have any other material conflict of interest at the time of publication of this research report or date of the public appearance. However ASBL's associates might have an actual / potential conflict of interest (other than ownership).
- ASBL or its associates may have received compensation for investment banking, merchant banking, and brokerage services and for other products and services from the subject companies during the preceding 12 months. However, ASBL or its associates or its Research analysts (forming part of Research Desk) have not received any compensation or other benefits from the subject companies or third parties in connection with the research report. Moreover, Research Analysts have not received any compensation from the companies mentioned herein in the past twelve months.
- ASBL or their Research Analysts have not managed or co-managed public offering of securities for the subject company(ies) in the past twelve months. However ASBL's associates may have managed or co-managed public offering of securities for the subject company(ies) in the past twelve months.
- Research Analysts have not served as an officer, director or employee of the companies mentioned in the report.
- Neither ASBL nor its Research Analysts have been engaged in market making activity for the companies mentioned in the report.

Disclaimer

The research recommendation and information herein are solely for the personal information of the authorized recipient and does not construe to be an offer documents or any investment, legal or taxation advice or solicitation of any action based upon it. This report is not for public distribution or use by any person or entity, where such distribution, publication, availability or use would be contrary to law, regulation or subject to any registration or licensing requirement. We will not treat recipients as customer by virtue of their receiving this report. The report is based upon the information obtained from public sources that we consider reliable, but we do not guarantee its accuracy or completeness. ASBL shall not be in anyways responsible for any loss or damage that may arise to any such person from any inadvertent error in the information contained in this report. The recipients of this report should rely on their own investigations.