

# Technical Report

## Closing Brief

Indian equity market settled the day higher at 8,221.80 posting gains of 51 points or 0.62% lead by index heavyweights like Tata motors, Reliance and Infosys.

## Technical Build up

- ❖ Bullish candle with decrease in volume
- ❖ Buy crossover in oscillators.
- ❖ Lower band of Bollinger exist at 7943
- ❖ Crucial moving average of 20/50 SMA are at 8117 and 8399
- ❖ 200 SMA trend deciding level exist at 8199

## Outlook for the day

Indian Equity market closed marginally higher amid cautiousness on Tuesday, thanks to rebound in select index majors in later half. Positive European cues and short covering in index heavyweights helped the market recover. On the technical front, had been gyrating within a narrow range but managed to stay afloat the 8150 pivot with low volume. The counter-trend move defined by ascending channel from the low of 7916 would lead the Index to trade between 8100-8320 in the near-term. However Nifty was able to scale the 200dma which might act positively for the market though the broader trend continues to remain negative as present structure indicates that bearish Head & Shoulder formation might be under way. On the F&O front increase in OI followed by increase in price indicates long buildup while on the option front significant OI addition were seen in lower strike price put option of 8000 & 8100 in order to hedge for downside risk due to the presence of event risk in the market

## Technical & Derivative Report

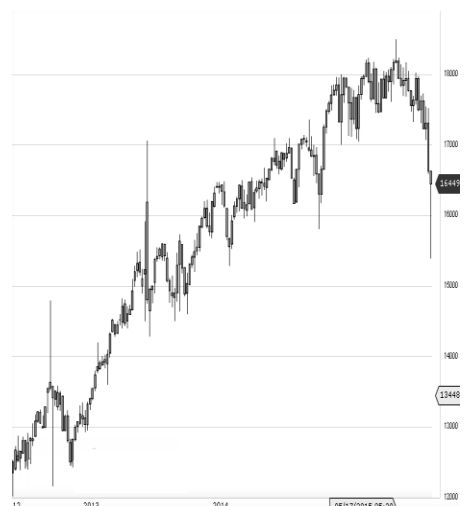
World Indices	LTP	Daily Ch(Pts)	Daily Ch(%)
Dow Jones	19911	114	0.58
Nasdaq	5463	51	0.95
S&P 500	2271	14	0.65
FTSE 100	6968	78	1.13
DAX	11284	94	0.84
Hang Seng	22597	150	0.67
Nikkei	19230	-18	-0.09
Sensex	26697	182	0.69
Nifty	8221	51	0.62

Commodity /Forex	LTP	Daily Ch(Pts)	Daily Ch(%)
Gold (\$/Oz)	1161.30	2.30	0.20
Silver (\$/Oz)	16.97	-0.01	-0.07
Copper(USD/lb.)	259.40	-0.45	-0.17
Brent Crude(USD/bbl)	55.16	-0.56	-1.01
USD/INR	67.54	0.12	0.18
USD/YEN	115.21	0.02	0.02
USD/EUR	1.0635	0.0009	0.08

Support/Resistance levels for Indian Equity Indices					
	S1	S2	CMP	R1	R2
Sensex	26545	26380	26697	26780	26875
Nifty	8175	8125	8221	8245	8275
Nifty (Fut)	8185	8135	8227	8255	8285

Pivot Level	
Sensex	26639
Nifty	8202

**US:** US market closed higher on Tuesday as investors kept an eye on a key Federal Reserve meeting, while the Dow Jones industrial average closed in on another milestone. Technically DJIA is presently trading at the 5th leg through Elliot wave count with negative divergence in oscillators.



Increase in OI with Increase in Price (Long Buildup)						Increase in OI with Decrease in Price (Short Buildup)					
Symbol	Prev OI	Curr OI	OI Chg (%)	Curr Pr.	Pr.Chg (%)	Symbol	Prev OI	Curr OI	OI Chg (%)	Curr Pr.	Pr.Chg (%)
TVSMO						BHARAT					
TOR	3165	3640	15	370.45	1.6	FIN	7354	8389	14.1	678.5	[2.2]
NCC	1615	1799	11.4	83.65	2.6	TORNTP					
SOUTHB						HARM	614	696	13.4	1310.15	[3.1]
ANK	1180	1297	9.9	22	1.9	BAJFINA					
TATAM						NCE	5287	5932	12.2	837	[1.2]
OTORS	15366	16633	8.3	470.05	3.3	M&MFI					
BHARAT						N	3659	3974	8.6	269.8	[2.7]
FORG	6811	7346	7.9	1003	3.4	HINDUN					
						ILVR	7062	7607	7.7	829.5	[0.8]

Nifty gained by 0.62% with Nifty future added 5.2 lakh shares in open interest and stock future added 137.9 Lakh shares in open interest.

- Nifty PCR increased to 1.09 from 1.07
- Total Nifty Calls added 1.6 lakh shares in open interest.
- Total Nifty Puts added 14.1 lakh shares in open interest.
- Maximum open interest (Nifty) in Calls for Dec series is at 8300 and 8000 put.
- FII's sold net Rs.2181.03 Cr(provisional), while DIIs bought net Rs.178.92 Cr in cash market.
- FII sold net Rs.452.69 Cr in F&O
- Securities in Ban Period: IBREALEST & JINDALSTEL

## Nifty Tracker

PARTICULARS	13/12/2016	12/12/2016	09/12/2016	08/12/2016
Spot	8221.8	8170.8	8261.75	8246.85
% Change in Spot	0.62%	-1.10%	0.18%	1.79%
Nifty(FUT) Dec	8227.45	8183.4	8277	8255.65
Nifty(FUT) Dec Vol.	96307	116984	91161	145413
Nifty(FUT) Dec - OI	16960425	16502925	17151225	16865250
Nifty(FUT) Jan	8263.4	8217.7	8311.15	8287.5
Nifty(FUT) Jan Vol.	4965	6778	4605	6749
Nifty(FUT) Jan - OI	1684125	1634025	1585350	1521450

## Trade Statistics for 13/12/2016

PARTICULARS	NO. OF CONTRACTS	TURNOVER (RS. CR.)	PUT CALL RATIO
NSE Index Futures	1,65,674	10954	-
NSE Stock Futures	3,88,823	26073	-
NSE Index Options	22,81,096	1,54,249.38	-
NSE Stock Options	2,29,253	16068	0.56
NSE F&O Total Turnover	30,64,846	207,344	0.87
NSE Cash Turnover	-	18,046.45	-
BSE Cash Turnover	-	2,059.97	-
Total Turnover	-	227450	-

## FII Corner (F&O)

FII NET BUYING/SELLING & CHANGE IN OPEN INTEREST (Cr. Rupee)						
PARTICULARS	13/12/2016		12/12/2016		09/12/2016	
	Net Buying /Selling	Change In Open interest	Net Buying /Selling	Change In Open interest	Net Buying /Selling	Change In Open interest
Index Future	236	367	-61	-322	241	734
Index option	-135	604	-210	-1079	21	1630
Stock Future	-477	424	-842	-308	-192	495
Stock option	-76	221	43	220	-45	140
Total	-452	1616	-1070	-1489	25	2999

## Market Open Interest

ADDITION/REDUCTION IN MARKET OPEN INTEREST					
Contracts	13/12/2016	12/12/2016	09/12/2016	08/12/2016	07/12/2016
Index Futures	439	-713	753	699	668
Index Options	485	-766	692	1819	-242
Stock Futures	2413	1266	-20213	14237	7274
Stock Options	619	802	470	434	714
F&O Total	3956	589	-18298.1	17188.79	8414.73

## Nifty Option Open Interest Statistics

NIFTY OPTIONS HIGHEST ADDITION IN OPEN INTEREST						
Expiry	Strike	Option Type	Settlement Price	Volume	Open Interest	Change In OI
29-Dec-16	8000	PE	37.1	86637	7860250	240375
29-Dec-16	8100	PE	56.6	102734	4103550	236625
29-Dec-16	8400	CE	27.7	109169	4345125	206475
29-Dec-16	8150	PE	67.85	9656	359475	162900
29-Dec-16	7900	PE	24.3	50070	3558750	160350
29-Dec-16	8200	PE	86.8	117164	4269600	153150
25-Jan-17	8900	PE	631.1	1707	340875	109200
25-Jan-17	9000	PE	730.5	1715	430950	105975
29-Dec-16	7700	PE	11.6	20381	2581125	77925
25-Jan-17	8000	PE	79.65	5234	1307625	69900

NIFTY OPTIONS HIGHEST REDUCTION IN OPEN INTEREST						
Expiry	Strike	Option Type	Settlement Price	Volume	Open Interest	Change In OI
29-Dec-16	8500	CE	11.25	67023	3848100	-314475
29-Dec-16	9000	PE	768.6	1799	1928800	-108450
29-Dec-16	8900	PE	666.7	1685	561375	-87300
29-Dec-16	8000	CE	260	5871	2305600	-84525
29-Dec-16	8600	CE	4.3	38478	2073750	-80475
29-Dec-16	8200	CE	110.9	129074	4216425	-60075
29-Dec-16	8800	PE	569.3	1280	780450	-58575
29-Dec-16	8300	PE	133.4	24067	1971150	-55875
29-Dec-16	8300	CE	60.35	132915	5157825	-36525
29-Dec-16	8700	CE	2.2	20370	1748075	-33600

## Stock Option Open Interest Statistics

STOCK OPTIONS WITH HIGHEST ADDITION IN OPEN INTEREST							
Symbol	Expiry	Strike	Option Type	Settl. Price	Volume	Open Interest	Change in OI
IFCI	29-Dec-16	30	CE	0.2	467	11506000	1650000
IFCI	29-Dec-16	27.5	CE	0.6	748	8624000	704000
NCC	29-Dec-16	90	CE	0.9	571	1152000	688000
DLF	29-Dec-16	115	CE	2.9	512	3125000	650000
TATAMOTORS	29-Dec-16	480	CE	8.4	4075	1954500	642000
PNB	29-Dec-16	130	CE	4.4	561	1309000	609000
ASHOKLEY	29-Dec-16	80	CE	1.7	462	3724000	602000
GMRINFRA	29-Dec-16	10	PE	0.1	15	3285000	585000
PNB	29-Dec-16	135	CE	2.5	738	2450000	581000
TATAMOTORS	29-Dec-16	440	PE	3.7	2094	1332000	559500

STOCK OPTIONS WITH HIGHEST REDUCTION IN OPEN INTEREST							
Symbol	Expiry	Strike	Option Type	Settl. Price	Volume	Open Int.	Change in OI
HINDALCO	29-Dec-16	170	PE	3	684	1760500	-560000
VEDL	29-Dec-16	220	PE	2.5	490	3522000	-510000
CROMPGREAV	29-Dec-16	75	CE	0.15	111	3192000	-360000
VEDL	29-Dec-16	230	PE	4.65	566	2448000	-318000
HINDALCO	29-Dec-16	175	PE	4.8	577	759500	-290500
VEDL	29-Dec-16	240	PE	8.6	573	1596000	-282000
ICICIBANK	29-Dec-16	260	PE	4.85	778	1532500	-262500
HINDALCO	29-Dec-16	180	PE	7.3	470	1421000	-259000
IBREALEST	29-Dec-16	80	CE	0.35	55	1660000	-250000
TATAMOTORS	29-Dec-16	520	CE	1.5	2466	1294500	-238500

Name	Designation	Email ID	Contact No.
Paras Bothra	President Equity Research	paras@ashikagroup.com	+91 22 6611 1704
Krishna Kumar Agarwal	Equity Research Analyst	krishna.a@ashikagroup.com	+91 33 4036 0646
Partha Mazumder	Equity Research Analyst	partha.m@ashikagroup.com	+91 33 4036 0647
Arijit Malakar	Equity Research Analyst	amalakar@ashikagroup.com	+91 33 4036 0644
Chanchal Bachhawat	Equity Research Analyst	chanchal.bachhawat@ashikagroup.com	+91 22 6611 1712
Tirthankar Das	Technical & Derivative Analyst	tirthankar.d@ashikagroup.com	+91 33 4036 0645

SEBI Registration No. INH000000206

#### Disclosure

The Research Analysts and /or Ashika Stock Broking Limited do hereby certify that all the views expressed in this research report accurately reflect their views about the subject issuer(s) or securities. Moreover, they also certify the followings:-

- The Research Analyst or Ashika Stock Broking Limited or his/its Associates or his/its relative, has any financial interest in the subject company (ies) covered in this report. **Yes**
- The Research Analyst or Ashika Stock Broking Limited or his/its Associates or his/its relative, have actual/beneficial ownership of 1% or more in the subject company, at the end of the month immediately preceding the date of the publication of the research report. **No**
- The Research Analyst or Ashika Stock Broking Limited or his/its Associates or his/its relatives has any material conflict of interest at the time of publication of the research report. **No**
- The Research Analyst or Ashika Stock Broking Limited or his/its Associates have received any compensation or compensation for investment banking or merchant banking or brokerage services or for product other than for investment banking or merchant banking or brokerage services from the companies covered in this report in the past 12 months. **No**
- The Research Analyst or Ashika Stock Broking Limited or his/its Associates have managed or co managed in the previous 12 months any private or public offering of securities for the company (ies) covered in this report. **No**
- The Research Analyst or Ashika Stock Broking Limited or his/its Associates have received any compensation or other benefits from the company (ies) covered in this report or any third party in connection with the Research Report. **No**
- The Research Analyst has served as an officer, director or employee of the company (ies) covered in the research report. **No**
- The Research Analyst or Ashika Stock Broking Limited has been engaged in Market making activity of the company (ies) covered in the research report. **No**

#### Disclaimer

This report is for the personal information of the authorized recipient and does not construe to be any investment, legal or taxation advice to you. Ashika Stock Broking Ltd. is not soliciting any action based upon it. This report is not for public distribution and has been furnished to you solely for your information and should not be reproduced or redistributed to any other person in any form. The report is based upon information that we consider reliable, but we do not represent that it is accurate or complete, and it should not be relied upon such. Ashika Stock Broking Ltd. or any of its affiliates or employees shall not be in anyway responsible for any loss or damage that may arise to any person from any inadvertent error in the information contained in this report. Ashika Stock Broking Ltd. or any of its affiliates or employees do not provide at any time, any express or implied