

Technical Report

Closing Brief

Cheering the historic victory of the BJP in Uttar Pradesh, Nifty opened an impressive 1.75% higher post the Holi weekend, riding strong on the Modi Wave. The benchmark Index ended at 9087 up 1.7%, after trading in a narrow range of almost 30 points during the day, holding its initial gains throughout the trading session.

Technical Build up

- ❖ Doji candle with decrease in volume
- ❖ Sell crossover in oscillators.
- ❖ Upper band of Bollinger exist at 9012
- ❖ Crucial moving average of 20/50 SMA are at 8879 and 8625
- ❖ 200 SMA trend deciding level exist at 8474

Outlook for the day

Indian Equity market made a new record high in early trade and settled with robust gains. The jubilation was mainly in reaction to the BJP's historic win in state elections which will further strengthen their reform agenda without a major hurdle to boost the investment both domestic as well as globally. On the technical front, Nifty gave the range breakout after the consolidation of last thirteen trading sessions. The Index has been making higher top - higher bottom formation on weekly charts and supports are shifting higher. It has been respecting its 13 EMA in 2017 which could act as the next support for the index. Thus the first support now comes in at 9050 and below that at 9000. Going forward, the trend continues to remain bullish and resistance for the Index is placed at 9100-9125 and above that at 9200 for the coming few sessions. On the option front data depicts huge short covering in 9000 CE were seen while fresh addition took place in 9100-9200 CE. On Put front incremental addition was witnessed in 9000-9100 strike indicating higher support in place. Overall option indicative band moves to 8900- 9200.

Technical & Derivative Report

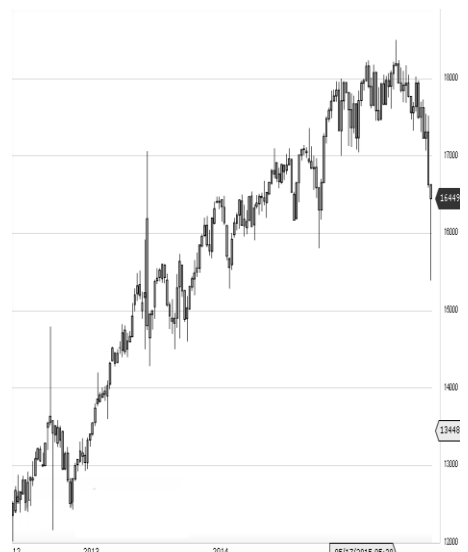
World Indices	LTP	Daily Ch(Pts)	Daily Ch(%)
Dow Jones	20837	-44	-0.21
Nasdaq	5856	-18	-0.32
S&P 500	2365	-8	-0.34
FTSE 100	7357	-9	-0.13
DAX	11988	-1	-0.01
Hang Seng	23705	-122	-0.51
Nikkei	19543	-65	-0.34
Sensex	29442	496	1.71
Nifty	9087	152	1.71

Commodity /Forex	LTP	Daily Ch(Pts)	Daily Ch(%)
Gold (\$/Oz)	1200.00	-2.60	-0.22
Silver (\$/Oz)	16.93	0.01	0.04
Copper(USD/lb.)	264.45	0.95	0.36
Brent Crude(USD/bbl)	51.55	0.63	1.24
USD/INR	65.81	-0.78	-1.18
USD/YEN	114.81	0.06	0.05
USD/EUR	1.0613	0.0009	0.08

Support/Resistance levels for Indian Equity Indices					
	S1	S2	CMP	R1	R2
Sensex	29315	29150	29442	29570	29700
Nifty	9050	9000	9087	9125	9165
Nifty (Fut)	9065	9015	9103	9140	9180

Pivot Level	
Sensex	29453
Nifty	9090

US: US market closed slightly lower Tuesday, ahead of a likely interest rate hike, as energy stocks fell. Technically DJIA is presently trading at the 5th leg through Elliot wave count with negative divergence in oscillators.



Increase in OI with Increase in Price (Long Buildup)						Increase in OI with Decrease in Price (Short Buildup)					
Symbol	Prev OI	Curr OI	OI Chg (%)	Curr Pr.	Pr.Ch g (%)	Symbol	Prev OI	Curr OI	OI Chg (%)	Curr Pr.	Pr.Ch g (%)
CEATLT						COALIN					
D	2705	3650	34.9	1236	6.6	DIA	7624	8906	16.8	296.45	[0.5]
HINDZIN						CONCO					
C	3201	3972	24.1	288.85	1.3	R	2518	2799	11.2	1230	[0.9]
BATAIN						AXISBA					
DIA	2607	3212	23.2	532	4.2	NK	21904	24223	10.6	513.4	[0.6]
SIEMEN						NMDC	3366	3709	10.2	135.6	[0.6]
S	1650	1960	18.8	1259.4	4.5	DABUR	4476	4904	9.6	274.55	[0.1]
M&MFI											
N	5579	6592	18.2	281.2	1.7						

Nifty gained by 1.71% with Nifty future added 21.4 lakh shares in open interest and stock future shaded 21.5 Lakh shares in open interest.

- Nifty PCR increased to 0.95 from 0.87
- Total Nifty Calls shaded 48.6 lakh shares in open interest.
- Total Nifty Puts added 17.2 lakh shares in open interest.
- Maximum open interest (Nifty) in Calls for Jan series is at 9200 and 8800 put.
- FII's bought net Rs.4087.89 Cr(provisional), while DIIs sold net Rs.1519.94 Cr in cash market.
- FII bought net Rs.5615.99 Cr in F&O
- Securities in Ban Period: BHARATFIN, JETAIRWAYS, JINDALSTEL & RCOM

Nifty Tracker

PARTICULARS	14/03/2017	10/03/2017	09/03/2017	08/03/2017
Spot	9087	8934.55	8927	8924.3
% Change in Spot	1.71%	0.08%	0.03%	-0.25%
Nifty(FUT) Mar	9103	8958.7	8954.5	8952.1
Nifty(FUT) Mar Vol.	190327	115008	93016	118774
Nifty(FUT) Mar - OI	25192800	23349375	22752900	22164600
Nifty(FUT) Apr	9127.4	8985.4	8981.65	8977.3
Nifty(FUT) Apr Vol.	11864	6343	10346	14525
Nifty(FUT) Apr - OI	3884850	3607500	3408450	2895300

Trade Statistics for 14/03/2017

PARTICULARS	NO. OF CONTRACTS	TURNOVER (RS. CR.)	PUT CALL RATIO
NSE Index Futures	2,92,061	21289	-
NSE Stock Futures	6,69,967	48397	-
NSE Index Options	47,78,343	3,55,601.71	-
NSE Stock Options	4,14,234	30493	0.47
NSE F&O Total Turnover	61,54,605	455,781	0.87
NSE Cash Turnover	-	27,728.52	-
BSE Cash Turnover	-	4,677.92	-
Total Turnover	-	488187	-

FII Corner (F&O)

FII NET BUYING/SELLING & CHANGE IN OPEN INTEREST (Cr. Rupee)						
PARTICULARS	14/03/2017		10/03/2017		09/03/2017	
	Net Buying /Selling	Change In Open interest	Net Buying /Selling	Change In Open interest	Net Buying /Selling	Change In Open interest
Index Future	1837	3376	-104	523	-617	157
Index option	3389	1054	-3686	3684	-1224	1976
Stock Future	499	1777	-925	568	-525	534
Stock option	-109	291	-169	324	-21	454
Total	5616	6497	-4884	5098	-2387	3121

Market Open Interest

ADDITION/REDUCTION IN MARKET OPEN INTEREST					
Contracts	14/03/2017	10/03/2017	09/03/2017	08/03/2017	07/03/2017
Index Futures	2931	699	1299	1623	1044
Index Options	2684	160	-286	1119	709
Stock Futures	2281	-17353	17442	7809	4994
Stock Options	672	1072	1109	1403	1159
F&O Total	8567	-15422	19563.47	11954.11	7906.34

Nifty Option Open Interest Statistics

NIFTY OPTIONS HIGHEST ADDITION IN OPEN INTEREST						
Expiry	Strike	Option Type	Settlement Price	Volume	Open Interest	Change In OI
30-Mar-17	9100	PE	81.15	187168	2942100	2111100
30-Mar-17	9000	PE	45.35	258782	4294200	1468125
27-Apr-17	9000	PE	97.55	17241	1190250	436575
30-Mar-17	9200	PE	136.85	40778	976800	379125
27-Apr-17	8800	PE	47.15	16038	1178925	165000
30-Mar-17	9050	PE	61.05	9026	175425	152400
27-Apr-17	8900	PE	68.4	11782	895725	142350
30-Mar-17	9700	CE	1.35	14003	666825	112350
27-Apr-17	9100	PE	133.95	5623	260475	107850
27-Apr-17	9200	CE	110.85	13759	894825	101400

NIFTY OPTIONS HIGHEST REDUCTION IN OPEN INTEREST						
Expiry	Strike	Option Type	Settlement Price	Volume	Open Interest	Change In OI
30-Mar-17	9000	CE	145.25	142957	4219875	-2347425
30-Mar-17	8700	PE	8.1	115274	3501750	-1046850
30-Mar-17	8900	CE	225.4	38266	2023350	-944475
30-Mar-17	8600	PE	4.7	68667	2728575	-714525
30-Mar-17	9200	CE	42.35	289405	5404125	-548550
30-Mar-17	8500	PE	3.2	90218	2918550	-482475
30-Mar-17	9100	CE	84.05	309118	4864650	-447150
30-Mar-17	9300	CE	18.6	229462	4208625	-361650
30-Mar-17	8400	PE	2.4	50170	2900100	-324750
30-Mar-17	8300	PE	1.9	21995	1507125	-321525

Stock Option Open Interest Statistics

STOCK OPTIONS WITH HIGHEST ADDITION IN OPEN INTEREST							
Symbol	Expiry	Strike	Option Type	Settl. Price	Volume	Open Interest	Change in OI
IDEA	30-Mar-17	110	CE	2.3	1060	5166000	1239000
IDEA	30-Mar-17	125	CE	0.4	457	4585000	1141000
ICICIBANK	30-Mar-17	280	PE	4.1	3035	3250000	1140000
BHARTIARTL	30-Mar-17	330	PE	1.2	750	2170900	1038700
ITC	30-Mar-17	255	PE	0.9	516	1399200	998400
IFCI	30-Mar-17	30	CE	0.45	327	9878000	946000
RPOWER	30-Mar-17	50	CE	0.6	269	4272000	852000
GMRIINFRA	30-Mar-17	20	CE	0.05	37	15480000	810000
IDEA	30-Mar-17	130	CE	0.25	491	5299000	721000
ASHOKLEY	30-Mar-17	95	CE	1.35	821	5810000	665000

STOCK OPTIONS WITH HIGHEST REDUCTION IN OPEN INTEREST							
Symbol	Expiry	Strike	Option Type	Settl. Price	Volume	Open Int.	Change in OI
JPASSOCIAT	30-Mar-17	20	CE	0.05	33	16252000	-1904000
ICICIBANK	30-Mar-17	280	CE	11.5	2853	3270000	-1520000
IDEA	30-Mar-17	137.5	CE	0.1	236	4403000	-1379000
ADANIPOWER	30-Mar-17	40	CE	1.4	397	7300000	-1320000
JPASSOCIAT	30-Mar-17	10	PE	0.05	27	5236000	-1292000
JPASSOCIAT	30-Mar-17	22.5	CE	0.05	17	11424000	-1088000
JPASSOCIAT	30-Mar-17	12.5	PE	0.2	105	5712000	-1088000
JPASSOCIAT	30-Mar-17	17.5	CE	0.2	48	19448000	-816000
RCOM	30-Mar-17	37.5	CE	0.9	156	4740000	-780000
CGPOWER	30-Mar-17	57.5	PE	0.1	106	276000	-768000

Research Team

Name	Designation	Email ID	Contact No.
Paras Bothra	President Equity Research	paras@ashikagroup.com	+91 22 6611 1704
Krishna Kumar Agarwal	Equity Research Analyst	krishna.a@ashikagroup.com	+91 33 4036 0646
Partha Mazumder	Equity Research Analyst	partha.m@ashikagroup.com	+91 33 4036 0647
Arijit Malakar	Equity Research Analyst	amalakar@ashikagroup.com	+91 33 4036 0644
Kapil Jagasia, CFA	Equity Research Analyst	kapil.j@ashikagroup.com	+91 22 6611 1715
Tirthankar Das	Technical & Derivative Analyst	tirthankar.d@ashikagroup.com	+91 33 4036 0645

SEBI Registration No. INH000000206

Disclosure

The Research Analysts and /or Ashika Stock Broking Limited do hereby certify that all the views expressed in this research report accurately reflect their views about the subject issuer(s) or securities. Moreover, they also certify the followings:-

- The Research Analyst or Ashika Stock Broking Limited or his/its Associates or his/its relative, has any financial interest in the subject company (ies) covered in this report. **Yes**
- The Research Analyst or Ashika Stock Broking Limited or his/its Associates or his/its relative, have actual/beneficial ownership of 1% or more in the subject company, at the end of the month immediately preceding the date of the publication of the research report. **No**
- The Research Analyst or Ashika Stock Broking Limited or his/its Associates or his/its relatives has any material conflict of interest at the time of publication of the research report. **No**
- The Research Analyst or Ashika Stock Broking Limited or his/its Associates have received compensation for investment banking or merchant banking or brokerage services or for product other than for investment banking or merchant banking or brokerage services from the companies covered in this report in the past 12 months. **No**
- The Research Analyst or Ashika Stock Broking Limited or his/its Associates have managed or co managed in the previous 12 months any private or public offering of securities for the company (ies) covered in this report. **No**
- The Research Analyst or Ashika Stock Broking Limited or his/its Associates have received any compensation or other benefits from the company (ies) covered in this report or any third party in connection with the Research Report. **No**
- The Research Analyst has served as an officer, director or employee of the company (ies) covered in the research report. **No**
- The Research Analyst or Ashika Stock Broking Limited has been engaged in Market making activity of the company (ies) covered in the research report. **No**

Disclaimer

This report is for the personal information of the authorized recipient and does not construe to be any investment, legal or taxation advice to you. Ashika Stock Broking Ltd. is not soliciting any action based upon it. This report is not for public distribution and has been furnished to you solely for your information and should not be reproduced or redistributed to any other person in any form. The report is based upon information that we consider reliable, but we do not represent that it is accurate or complete, and it should not be relied upon such. Ashika Stock Broking Ltd. or any of its affiliates or employees shall not be in anyway responsible for any loss or damage that may arise to any person from any inadvertent error in the information contained in this report. Ashika Stock Broking Ltd., or any of its affiliates or employees do not provide, at any time, any express or implied warranty of any kind, regarding any matter pertaining to this report, including without limitation the implied warranties of merchantability, fitness for a particular purpose, and non-infringement. The recipients of this report should rely on their own investigations.