

Technical Report

Closing Brief

Benchmark Index ended the last session at 9400.90 down 0.23% for the day. On the Sectoral front, IT stocks resumed their upward momentum to end with gains of over 1% while Realty closed at 0.62% for the day, whereas on the flip side

Technical Build up

- ❖ Bearish candle with increase in volume
- ❖ Buy crossover in oscillators.
- ❖ Upper band of Bollinger exist at 9439
- ❖ Crucial moving average of 20/50 SMA are at 9251 and 9138
- ❖ 200 SMA trend deciding level exist at 8665

Outlook for the day

Indian Equity market Snapping a four-day winning streak Traders were booking profit. On the Sectoral front, IT stocks resumed their upward momentum to end with gains of over 1% while Realty closed at 0.62% for the day. The market breadth mirrored the uninspiring mood quoting 437:1053 in favour of the declines. On the technical front, deemed to trade with bullish bias unless it goes below 9270 levels. Now, close observation in daily chart reveals that a 'Bullish Flag' pattern is underway. The projected target of the said pattern comes around 9600. On the option front maximum Put OI is at 9300 followed by 9200 strike while maximum Call OI is at 9500 followed by 9400 strike. Fresh Put writing at 9400 & 9300 strike prices were seen while Call writing at 9500 & 9400 strikes were also seen.



Technical & Derivative Report

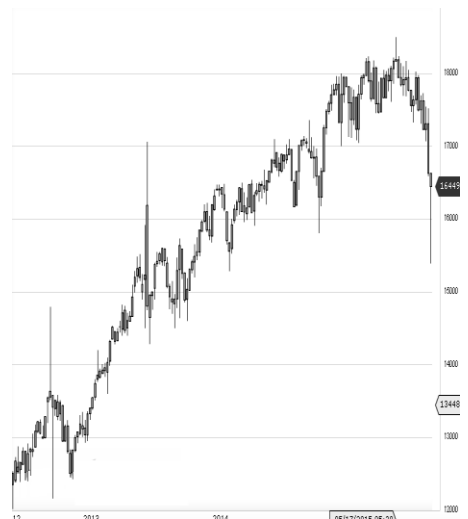
World Indices	LTP	Daily Ch(Pts)	Daily Ch(%)
Dow Jones	20896	-22	-0.11
Nasdaq	6121	5	0.09
S&P 500	2390	-3	-0.15
FTSE 100	7435	48	0.66
DAX	12770	59	0.47
Hang Seng	25262	106	0.42
Nikkei	19845	-38	-0.19
Sensex	30188	-62	-0.21
Nifty	9400	-21	-0.23

Commodity /Forex	LTP	Daily Ch(Pts)	Daily Ch(%)
Gold (\$/Oz)	1229.10	1.40	0.11
Silver (\$/Oz)	16.48	0.07	0.45
Copper(USD/lb.)	253.30	0.90	0.36
Brent Crude(USD/bbl)	50.90	0.06	0.12
USD/INR	64.31	-0.06	-0.10
USD/YEN	113.39	0.01	0.01
USD/EUR	1.0928	-0.0003	-0.03

Support/Resistance levels for Indian Equity Indices					
	S1	S2	CMP	R1	R2
Sensex	30020	29850	30188	30255	30355
Nifty	9350	9300	9400	9420	9450
Nifty (Fut)	9365	9315	9414	9435	9465

Pivot Level					
Sensex					
Nifty			9403		

US: US market closed mostly lower on Friday as investors digested a tough week for retailers as well as mixed economic data. Technically DJIA is presently trading at the 5th leg through Elliot wave count with negative divergence in oscillators.



Increase in OI with Increase in Price (Long Buildup)						Increase in OI with Decrease in Price (Short Buildup)					
Symbol	Prev OI	Curr OI	OI Chg (%)	Curr Pr.	Pr.Chg (%)	Symbol	Prev OI	Curr OI	OI Chg (%)	Curr Pr.	Pr.Chg (%)
PEL	447900	676800	51.1	2641.7	3.6	GLENM					
	1681000	1847000				ARK	2985500	5184900	73.7	760	[16.2]
ALBK	0	0	9.9	90.35	1.3	ORIENT	1605600	2011200			
	1292000	1415400				BANK	0	0	25.3	159.5	[8.5]
GAIL	0	0	9.6	412.9	0.6	YESBAN					
KOTAKB	1309600	1391040				K	7546000	9303000	23.3	1496	[5.6]
ANK	0	0	6.2	951.5	1.7	TORNTN					
RAYMO						OWER	3363000	3684000	9.6	213.7	[4.6]
ND	912800	967200	6	764.9	0	MRPL	3406500	3712500	9	129.95	[2.5]

Nifty declined by 0.23% with Nifty future shaded 4.7 lakh shares in open interest and stock future added 43.8 Lakh shares in open interest.

- Nifty PCR decreased to 1.24 from 1.26
- Total Nifty Calls added 8.5 lakh shares in open interest.
- Total Nifty Puts shaded 2.4 lakh shares in open interest.
- Maximum open interest (Nifty) in Calls for Jan series is at 9500 and 9300 put.
- FII's bought net Rs.841.8Cr(provisional), while DIIs sold net Rs.710.83 Cr in cash market.
- FII sold net Rs.1308.33 Cr in F&O
- Securities in Ban Period: CANBK, CEATLD, HDIL, IBREALEST, IFCI, JISJALEQS, JSWENERGY, KTKBANK, ORIENTBANK, SYNDIBANK & UJJIVAN

Nifty Tracker

PARTICULARS	12/05/2017	11/05/2017	10/05/2017	09/05/2017
Spot	9400.9	9422.4	9407.3	9316.85
% Change in Spot	-0.23%	0.16%	0.97%	0.03%
Nifty(FUT) May	9414.8	9439.85	9419.2	9350.4
Nifty(FUT) May Vol.	91721	71500	111474	70846
Nifty(FUT) May - OI	20614575	21136200	20665350	19371375
Nifty(FUT) June	9415.35	9438.55	9416.45	9349.3
Nifty(FUT) June Vol.	3716	5217	4561	2244
Nifty(FUT) June - OI	1608675	1566825	1431000	1313850

Trade Statistics for 12/05/2017

PARTICULARS	NO. OF CONTRACTS	TURNOVER (RS. CR.)	PUT CALL RATIO
NSE Index Futures	1,68,733	13357	-
NSE Stock Futures	7,33,772	51957	-
NSE Index Options	32,90,603	2,65,747.21	-
NSE Stock Options	5,69,594	40334	0.57
NSE F&O Total Turnover	47,62,702	371,395	1
NSE Cash Turnover	-	25,183.85	-
BSE Cash Turnover	-	3,871.81	-
Total Turnover	-	400451	-

FII Corner (F&O)

FII NET BUYING/SELLING & CHANGE IN OPEN INTEREST (Cr. Rupee)						
PARTICULARS	12/05/2017		11/05/2017		10/05/2017	
	Net Buying /Selling	Change In Open interest	Net Buying /Selling	Change In Open interest	Net Buying /Selling	Change In Open interest
Index Future	-916	75	-155	834	-395	1009
Index option	-122	469	923	2192	857	3417
Stock Future	-191	282	434	598	383	1042
Stock option	-79	537	-21	365	29	390
Total	-1308	1364	1181	3989	874	5859

Market Open Interest

ADDITION/REDUCTION IN MARKET OPEN INTEREST					
Contracts	12/05/2017	11/05/2017	10/05/2017	09/05/2017	08/05/2017
Index Futures	-852	542	1942	223	675
Index Options	-193	864	1738	1323	1524
Stock Futures	-21973	15911	8895	5420	8260
Stock Options	1307	1251	1341	1076	1415
F&O Total	-21711	18569	13916.31	8042.74	11874.13

Nifty Option Open Interest Statistics

NIFTY OPTIONS HIGHEST ADDITION IN OPEN INTEREST						
Expiry	Strike	Option Type	Settlement Price	Volume	Open Interest	Change In OI
25-May-17	9200	PE	14.9	133346	5919975	438150
25-May-17	9500	CE	28.55	187547	7080075	396225
29-Jun-17	9200	PE	59.7	8538	1368100	206925
25-May-17	9400	CE	71.65	169420	4419150	203325
29-Jun-17	9000	PE	28.4	8667	1960125	139575
29-Jun-17	8900	PE	19.1	5049	818925	139125
25-May-17	9450	CE	45.75	32078	884475	118650
25-May-17	8800	PE	2.8	12856	2182125	110775
29-Jun-17	9400	CE	132.15	5499	684525	88875
25-May-17	9650	CE	4	8095	548175	79800

NIFTY OPTIONS HIGHEST REDUCTION IN OPEN INTEREST						
Expiry	Strike	Option Type	Settlement Price	Volume	Open Interest	Change In OI
25-May-17	9300	PE	29	195976	7264125	-355950
25-May-17	9400	PE	58.85	195954	3805500	-346800
25-May-17	9500	PE	111.55	52033	1577175	-262425
25-May-17	8900	PE	4	28202	2704125	-240000
25-May-17	9600	CE	8.5	136348	3420375	-219900
25-May-17	9250	PE	20.55	35300	808350	-164175
25-May-17	9300	CE	139.85	36518	2320350	-63300
25-May-17	9200	CE	223.9	6064	1096875	-41550
25-May-17	8600	PE	2.15	4344	1118475	-41100
25-May-17	10500	PE	1081.7	1498	637125	-39825

Stock Option Open Interest Statistics

STOCK OPTIONS WITH HIGHEST ADDITION IN OPEN INTEREST							
Symbol	Expiry	Strike	Option Type	Settl. Price	Volume	Open Interest	Change in OI
ORIENTBANK	25-May-17	200	CE	0.25	585	2412000	2178000
SUZLON	25-May-17	22.5	CE	0.4	415	28410000	1830000
JPASSOCIAT	25-May-17	15	CE	0.15	68	22848000	1360000
FEDERALBNK	25-May-17	110	CE	7	265	3465000	1034000
ORIENTBANK	25-May-17	170	CE	2.3	843	1278000	1026000
ORIENTBANK	25-May-17	180	CE	0.95	1217	1572000	960000
SUZLON	25-May-17	25	CE	0.15	190	17430000	960000
AXISBANK	25-May-17	520	CE	6.2	4487	2396400	924000
IDEA	25-May-17	95	CE	2.7	1940	3892000	917000
DLF	25-May-17	210	PE	8.4	244	1045000	905000

STOCK OPTIONS WITH HIGHEST REDUCTION IN OPEN INTEREST							
Symbol	Expiry	Strike	Option Type	Settl. Price	Volume	Open Int.	Change in OI
IFCI	25-May-17	35	CE	0.15	88	10868000	-1254000
IDEA	25-May-17	90	CE	5	552	2275000	-819000
BANKBARODA	25-May-17	220	PE	34	226	112000	-658000
ICICIBANK	25-May-17	300	PE	8.1	1804	2125000	-555000
ICICIBANK	25-May-17	290	PE	4	3058	2900000	-527500
IFCI	25-May-17	40	CE	0.05	28	3960000	-484000
ICICIBANK	25-May-17	270	PE	0.9	1023	3260000	-430000
PNB	25-May-17	170	PE	7.4	681	1270500	-381500
IFCI	25-May-17	32.5	CE	0.45	64	5764000	-374000
INFY	25-May-17	960	CE	16.6	4277	1059000	-373000

Research Team

Name	Designation	Email ID	Contact No.
Paras Bothra	President Equity Research	paras@ashikagroup.com	+91 22 6611 1704
Krishna Kumar Agarwal	Equity Research Analyst	krishna.a@ashikagroup.com	+91 33 4036 0646
Partha Mazumder	Equity Research Analyst	partha.m@ashikagroup.com	+91 33 4036 0647
Arijit Malakar	Equity Research Analyst	amalakar@ashikagroup.com	+91 33 4036 0644
Kapil Jagasia, CFA	Equity Research Analyst	kapil.j@ashikagroup.com	+91 22 6611 1715
Tirthankar Das	Technical & Derivative Analyst	tirthankar.d@ashikagroup.com	+91 33 4036 0645

Ashika Stock Broking Limited ("ASBL") or Research Entity has started its journey in the year 1994 and is engaged in the business of broking services, depository services, distributor of financial products (Mutual fund, IPO & Bonds). This research report has been prepared and distributed by ASBL in the sole capacity of a Research Analyst (Reg No. INH000000206) of SEBI (Research Analyst) Regulations 2014. ASBL is a wholly owned subsidiary of Ashika Global Securities (P) Ltd., a RBI registered non-deposit taking NBFC Company. Ashika group (details is enumerated on our website www.ashikagroup.com) is an integrated financial service provider inter alia engaged in the business of Investment Banking, Corporate Lending, Commodity Broking, Debt Syndication & Other Advisory Services.

There were no significant and material disciplinary actions against ASBL taken by any regulatory authority during last three years.

Disclosure

ASBL or its associates, its Research Analysts (including their relatives) may have financial interest in the subject company(ies). However, the said financial interest is not limited to having an open stock market position in /acting as advisor to /having a loan transaction with the subject company(ies) apart from registration as clients.

- ASBL or its Research Analysts (including their relatives) do not have any actual / beneficial ownership of 1% or more of securities of the subject company(ies) at the end of the month immediately preceding the date of publication of this report or date of the public appearance. However ASBL's associates may have actual / beneficial ownership of 1% or more of securities of the subject company(ies).
- ASBL or their Research Analysts (including their relatives) do not have any other material conflict of interest at the time of publication of this research report or date of the public appearance. However ASBL's associates might have an actual / potential conflict of interest (other than ownership).
- ASBL or its associates may have received compensation for investment banking, merchant banking, and brokerage services and for other products and services from the subject companies during the preceding 12 months. However, ASBL or its associates or its Research analysts (forming part of Research Desk) have not received any compensation or other benefits from the subject companies or third parties in connection with the research report. Moreover, Research Analysts have not received any compensation from the companies mentioned herein in the past twelve months.
- ASBL or their Research Analysts have not managed or co-managed public offering of securities for the subject company(ies) in the past twelve months. However ASBL's associates may have managed or co-managed public offering of securities for the subject company(ies) in the past twelve months.
- Research Analysts have not served as an officer, director or employee of the companies mentioned in the report.
- Neither ASBL nor its Research Analysts have been engaged in market making activity for the companies mentioned in the report.

Disclaimer

The research recommendation and information herein are solely for the personal information of the authorized recipient and does not construe to be an offer documents or any investment, legal or taxation advice or solicitation of any action based upon it. This report is not for public distribution or use by any person or entity, where such distribution, publication, availability or use would be contrary to law, regulation or subject to any registration or licensing requirement. We will not treat recipients as customer by virtue of their receiving this report. The report is based upon the information obtained from public sources that we consider reliable, but we do not guarantee its accuracy or completeness. ASBL shall not be in anyways responsible for any loss or damage that may arise to any such person from any inadvertent error in the information contained in this report. The recipients of this report should rely on their own investigations.