

Technical Report

Closing Brief

Indian equity market closed about 39.35 points or 0.48% lower at 8182.45 levels trading cautiously ahead of the US Federal Reserve's two-day policy meeting. On the Sectoral front all major Sectoral Indices apart from IT and Realty sector closed in negative territory, Metals and PSU Banks followed by FMCG and Fin Service lead the decline.

Technical Build up

- ❖ Bearish candle with decrease in volume
- ❖ Buy crossover in oscillators.
- ❖ Lower band of Bollinger exist at 7944
- ❖ Crucial moving average of 20/50 SMA are at 8121 and 8391
- ❖ 200 SMA trend deciding level exist at 8204

Outlook for the day

Indian Equity market lost nearly half a percent on Thursday amid volatility, showing cautiousness ahead of US Fed meeting outcome. US Federal Reserve overnight raised interest rates by a quarter point and signalled a faster pace of increases in 2017. On the technical front, had been gyrating within a narrow range but managed to stay afloat the 8150 pivot with low volume. The counter-trend move defined by ascending channel from the low of 7916 would lead the Index to trade between 8100-8320 in the near-term and hovering near the 200dma which would act trend deciding aspect for the market though the broader trend continues to remain negative as present structure indicates that bearish Head & Shoulder formation might be under way. On the F&O front decrease in OI followed by decrease in price indicates long unwinding while on the option front data shows significant OI addition in 8200 & 8300 CE and 8100 PE. Option indicative band stays at 8000-8300.

Technical & Derivative Report

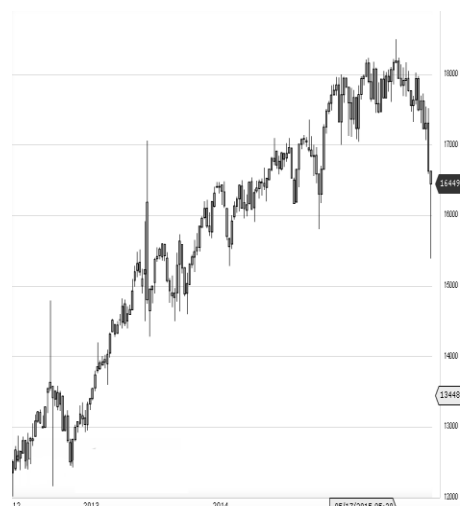
World Indices	LTP	Daily Ch(Pts)	Daily Ch(%)
Dow Jones	19792	-118	-0.60
Nasdaq	5436	-27	-0.50
S&P 500	2253	-18	-0.81
FTSE 100	6949	-19	-0.28
DAX	11244	-39	-0.35
Hang Seng	22189	-267	-1.19
Nikkei	19310	57	0.30
Sensex	26602	-94	-0.36
Nifty	8182	-39	-0.48

Commodity /Forex	LTP	Daily Ch(Pts)	Daily Ch(%)
Gold (\$/Oz)	1143.30	-20.40	-1.75
Silver (\$/Oz)	16.81	-0.41	-2.39
Copper(USD/lb.)	261.25	0.80	0.31
Brent Crude(USD/bbl)	53.81	-0.10	-0.19
USD/INR	67.44	-0.09	-0.14
USD/YEN	117.60	0.56	0.48
USD/EUR	1.0497	-0.0039	-0.37

Support/Resistance levels for Indian Equity Indices					
	S1	S2	CMP	R1	R2
Sensex	26430	26290	26602	26730	26860
Nifty	8130	8090	8182	8220	8260
Nifty (Fut)	8145	8105	8197	8235	8275

Pivot Level	
Sensex	26628
Nifty	8192

US: US market fell in choppy trade Wednesday, led lower by energy and utilities, after the Federal Reserve raise rates for the second time in a decade. Technically DJIA is presently trading at the 5th leg through Elliot wave count with negative divergence in oscillators.



Increase in OI with Increase in Price (Long Buildup)						Increase in OI with Decrease in Price (Short Buildup)					
Symbol	Prev OI	Curr OI	OI Chg (%)	Curr Pr.	Pr.Chg (%)	Symbol	Prev OI	Curr OI	OI Chg (%)	Curr Pr.	Pr.Chg (%)
GODREJI						ONGC	8687	11183	28.7	305.9	[1.9]
ND	884	977	10.5	413.2	0.4	IBULHS					
INFY	28081	30002	6.8	1000.5	1.1	GFIN	13753	16545	20.3	648	[3.5]
RELIANC						KSCL	1493	1782	19.4	393.5	[8.6]
E	30619	32169	5.1	1060	1.9	ORIENT					
HCLTEC						BANK	1936	2242	15.8	115.5	[3.5]
H	8200	8586	4.7	820.05	2.1	COALIN					
VOLTAS	2351	2457	4.5	317.95	0.1	DIA	7199	8014	11.3	293.1	[4.2]

Nifty declined by 0.48% with Nifty future shaded 2.6 lakh shares in open interest and stock future added 124.2 Lakh shares in open interest.

- Nifty PCR decreased to 1.08 from 1.09
- Total Nifty Calls added 18.4 lakh shares in open interest.
- Total Nifty Puts added 14.2 lakh shares in open interest.
- Maximum open interest (Nifty) in Calls for Dec series is at 8300 and 8000 put.
- FII's sold net Rs.632.29 Cr(provisional), while DIIs bought net Rs.210.86 Cr in cash market.
- FII sold net Rs.2031.63 Cr in F&O
- Securities in Ban Period: IBREALEST & JINDALSTEL

Nifty Tracker

PARTICULARS	14/12/2016	13/12/2016	12/12/2016	09/12/2016
Spot	8182.45	8221.8	8170.8	8261.75
% Change in Spot	-0.48%	0.62%	-1.10%	0.18%
Nifty(FUT) Dec	8197.65	8227.45	8183.4	8277
Nifty(FUT) Dec Vol.	100519	96307	116984	91161
Nifty(FUT) Dec - OI	16581150	16960425	16502925	17151225
Nifty(FUT) Jan	8231.6	8263.4	8217.7	8311.15
Nifty(FUT) Jan Vol.	5476	4965	6778	4605
Nifty(FUT) Jan - OI	1773375	1684125	1634025	1585350

Trade Statistics for 14/12/2016

PARTICULARS	NO. OF CONTRACTS	TURNOVER (RS. CR.)	PUT CALL RATIO
NSE Index Futures	1,69,112	11127	-
NSE Stock Futures	4,08,543	26350	-
NSE Index Options	27,61,016	1,86,890.72	-
NSE Stock Options	2,51,879	16510	0.57
NSE F&O Total Turnover	35,90,550	240,878	0.99
NSE Cash Turnover	-	16,150.98	-
BSE Cash Turnover	-	2,383.04	-
Total Turnover	-	259412	-

FII Corner (F&O)

FII NET BUYING/SELLING & CHANGE IN OPEN INTEREST (Cr. Rupee)						
PARTICULARS	14/12/2016		13/12/2016		12/12/2016	
	Net Buying /Selling	Change In Open interest	Net Buying /Selling	Change In Open interest	Net Buying /Selling	Change In Open interest
Index Future	-80	8	236	367	-61	-322
Index option	-2005	170	-135	604	-210	-1079
Stock Future	112	297	-477	424	-842	-308
Stock option	-59	79	-76	221	43	220
Total	-2032	554	-452	1616	-1070	-1489

Market Open Interest

ADDITION/REDUCTION IN MARKET OPEN INTEREST					
Contracts	14/12/2016	13/12/2016	12/12/2016	09/12/2016	08/12/2016
Index Futures	-188	439	-713	753	699
Index Options	-313	485	-766	692	1819
Stock Futures	7273	2413	1266	-20213	14237
Stock Options	616	619	802	470	434
F&O Total	7388	3956	589.13	-18298.1	17188.79

Nifty Option Open Interest Statistics

NIFTY OPTIONS HIGHEST ADDITION IN OPEN INTEREST						
Expiry	Strike	Option Type	Settlement Price	Volume	Open Interest	Change In OI
29-Dec-16	8200	CE	97.65	123707	4609875	393450
29-Dec-16	8100	PE	68.7	143227	4402800	299250
29-Dec-16	7800	PE	21.7	58489	3304200	266925
29-Dec-16	8300	CE	51.55	144206	5381025	223200
25-Jan-17	8500	CE	50.85	8973	1494525	189825
29-Dec-16	8000	PE	46.25	120774	8032100	171850
29-Dec-16	8500	CE	9.3	71742	4013925	165825
25-Jan-17	8600	CE	30.15	8250	1109850	159450
29-Dec-16	7500	PE	8.45	19348	3658725	142350
25-Jan-17	8900	PE	657.15	1949	473625	132750

NIFTY OPTIONS HIGHEST REDUCTION IN OPEN INTEREST						
Expiry	Strike	Option Type	Settlement Price	Volume	Open Interest	Change In OI
29-Dec-16	8800	CE	1.55	10645	1522575	-165075
29-Dec-16	7900	PE	31.35	67531	3439425	-119325
29-Dec-16	8150	PE	84.45	10828	245325	-114150
29-Dec-16	9000	PE	799.05	1929	1838950	-89850
29-Dec-16	8200	PE	103.55	135808	4189425	-80175
29-Dec-16	8900	PE	700.9	1861	488400	-72975
29-Dec-16	8300	PE	154.5	34110	1904925	-66225
29-Dec-16	8800	PE	602.55	1674	720975	-59475
29-Jun-17	6500	PE	30.5	681	6475	-48000
25-Jan-17	8700	CE	17.15	7393	1078650	-42675

Stock Option Open Interest Statistics

STOCK OPTIONS WITH HIGHEST ADDITION IN OPEN INTEREST							
Symbol	Expiry	Strike	Option Type	Settl. Price	Volume	Open Interest	Change in OI
ALBK	29-Dec-16	77.5	CE	0.25	116	1100000	1040000
FEDERALBNK	29-Dec-16	82.5	CE	0.1	92	1188000	913000
COALINDIA	29-Dec-16	300	CE	3.15	1326	982600	844900
SAIL	29-Dec-16	60	CE	0.2	328	7608000	732000
GMRIINFRA	29-Dec-16	12.5	CE	0.2	36	11970000	720000
PNB	29-Dec-16	130	CE	3.15	595	2016000	707000
NHPC	29-Dec-16	30	CE	0.1	58	6966000	648000
IFCI	29-Dec-16	30	CE	0.15	312	12100000	594000
PNB	29-Dec-16	140	CE	0.9	626	5628000	469000
ASHOKLEY	29-Dec-16	80	CE	1.4	369	4186000	462000

STOCK OPTIONS WITH HIGHEST REDUCTION IN OPEN INTEREST							
Symbol	Expiry	Strike	Option Type	Settl. Price	Volume	Open Int.	Change in OI
RECLTD	29-Dec-16	140	CE	0.7	362	2688000	-840000
SAIL	29-Dec-16	52.5	PE	1.5	167	2580000	-348000
VEDL	29-Dec-16	240	PE	9.7	288	1284000	-312000
ONGC	29-Dec-16	310	PE	9.2	353	160000	-297500
VEDL	29-Dec-16	225	PE	3.65	190	1032000	-282000
IBREALEST	29-Dec-16	75	CE	0.55	41	2540000	-280000
AXISBANK	29-Dec-16	460	CE	15.7	2521	702000	-246000
DLF	29-Dec-16	100	PE	0.9	188	2880000	-240000
COALINDIA	29-Dec-16	300	PE	10.3	896	482800	-234600
SBIN	29-Dec-16	250	PE	2.75	518	3402000	-225000

Name	Designation	Email ID	Contact No.
Paras Bothra	President Equity Research	paras@ashikagroup.com	+91 22 6611 1704
Krishna Kumar Agarwal	Equity Research Analyst	krishna.a@ashikagroup.com	+91 33 4036 0646
Partha Mazumder	Equity Research Analyst	partha.m@ashikagroup.com	+91 33 4036 0647
Arijit Malakar	Equity Research Analyst	amalakar@ashikagroup.com	+91 33 4036 0644
Chanchal Bachhawat	Equity Research Analyst	chanchal.bachhawat@ashikagroup.com	+91 22 6611 1712
Tirthankar Das	Technical & Derivative Analyst	tirthankar.d@ashikagroup.com	+91 33 4036 0645

SEBI Registration No. INH000000206

Disclosure

The Research Analysts and /or Ashika Stock Broking Limited do hereby certify that all the views expressed in this research report accurately reflect their views about the subject issuer(s) or securities. Moreover, they also certify the followings:-

- The Research Analyst or Ashika Stock Broking Limited or his/its Associates or his/its relative, has any financial interest in the subject company (ies) covered in this report. **Yes**
- The Research Analyst or Ashika Stock Broking Limited or his/its Associates or his/its relative, have actual/beneficial ownership of 1% or more in the subject company, at the end of the month immediately preceding the date of the publication of the research report. **No**
- The Research Analyst or Ashika Stock Broking Limited or his/its Associates or his/its relatives has any material conflict of interest at the time of publication of the research report. **No**
- The Research Analyst or Ashika Stock Broking Limited or his/its Associates have received any compensation or compensation for investment banking or merchant banking or brokerage services or for product other than for investment banking or merchant banking or brokerage services from the companies covered in this report in the past 12 months. **No**
- The Research Analyst or Ashika Stock Broking Limited or his/its Associates have managed or co managed in the previous 12 months any private or public offering of securities for the company (ies) covered in this report. **No**
- The Research Analyst or Ashika Stock Broking Limited or his/its Associates have received any compensation or other benefits from the company (ies) covered in this report or any third party in connection with the Research Report. **No**
- The Research Analyst has served as an officer, director or employee of the company (ies) covered in the research report. **No**
- The Research Analyst or Ashika Stock Broking Limited has been engaged in Market making activity of the company (ies) covered in the research report. **No**

Disclaimer

This report is for the personal information of the authorized recipient and does not construe to be any investment, legal or taxation advice to you. Ashika Stock Broking Ltd. is not soliciting any action based upon it. This report is not for public distribution and has been furnished to you solely for your information and should not be reproduced or redistributed to any other person in any form. The report is based upon information that we consider reliable, but we do not represent that it is accurate or complete, and it should not be relied upon such. Ashika Stock Broking Ltd. or any of its affiliates or employees shall not be in anyway responsible for any loss or damage that may arise to any person from any inadvertent error in the information contained in this report. Ashika Stock Broking Ltd. or any of its affiliates or employees do not provide at any time, any express or implied