

Technical Report

Closing Brief

Nifty staged a weak opening in yesterdays session followed by a breach of its support levels at 8770 and 8720 during the day. The index ended the session with a loss of 0.77% to close at 8742.70.

Technical Build up

- ❖ Doji candle with decrease in volume
- ❖ Sell crossover in oscillators.
- ❖ Upper band of Bollinger exist at 8948
- ❖ Crucial moving average of 20/50 SMA are at 8630 and 8358
- ❖ 200 SMA trend deciding level exist at 8382

Outlook for the day

Indian Equity market finally ended the consolidation phase and slipped nearly a percent due to the hawkish comments from US Fed chair Janet Yellen heightened capital outflow fears. Moreover, traders were booking profit from higher levels ahead of five Assembly Election results outcome in the next month. Auto, realty and pharma counters took a big hit. On the technical front, Nifty failed to surpass its multiple hurdle of 8820 zones and corrected towards 8720 levels. Nifty broke the lower-end of the recent trading range (8830-8710). Presently 21-DMA might act as the reference point, confirming major turn of trend which is placed at 8635, hence below 8710 could extend towards 8640. RSI too has given a sell signal by turning from its overbought state. On the F&O front incremental built-up in futures was seen while on the option front unwinding in Put option while fresh writing was witnessed in OTM Calls. Indicative option band moves to 8500-9000.

Technical & Derivative Report

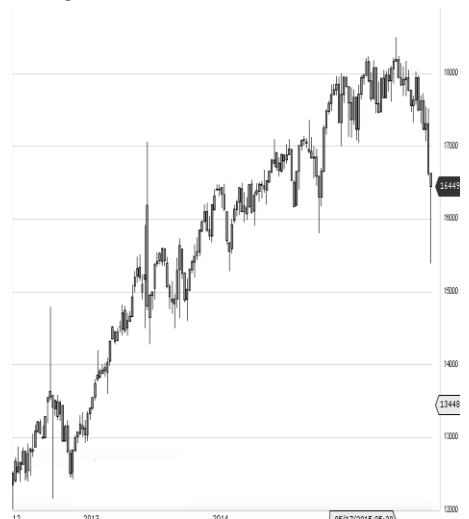
World Indices	LTP	Daily Ch(Pts)	Daily Ch(%)
Dow Jones	20611	107	0.52
Nasdaq	5819	36	0.64
S&P 500	2349	11	0.50
FTSE 100	7302	33	0.47
DAX	11793	22	0.19
Hang Seng	24041	46	0.19
Nikkei	19339	-98	-0.51
Sensex	28155	-183	-0.65
Nifty	8724	-67	-0.77

Commodity /Forex	LTP	Daily Ch(Pts)	Daily Ch(%)
Gold (\$/Oz)	1236.90	3.80	0.31
Silver (\$/Oz)	17.99	0.03	0.15
Copper(USD/lb.)	274.95	0.90	0.33
Brent Crude(USD/bbl)	55.70	-0.05	-0.09
USD/INR	66.90	-0.013	-0.02
USD/YEN	113.84	-0.32	-0.28
USD/EUR	1.0620	0.0019	0.18

Support/Resistance levels for Indian Equity Indices					
	S1	S2	CMP	R1	R2
Sensex	28000	27910	28155	28340	28570
Nifty	8680	8650	8724	8780	8850
Nifty (Fut)	8700	8670	8743	8800	8870

Pivot Level	
Sensex	28213
Nifty	8748

US: US market closed at fresh highs Wednesday for a fifth-straight day as traders continued to bet on a pro-growth agenda under President Donald Trump. Technically DJIA is presently trading at the 5th leg through Elliot wave count with negative divergence in oscillators.



Increase in OI with Increase in Price (Long Buildup)						Increase in OI with Decrease in Price (Short Buildup)					
Symbol	Prev OI	Curr OI	OI Chg (%)	Curr Pr.	Pr.Chg (%)	Symbol	Prev OI	Curr OI	OI Chg (%)	Curr Pr.	Pr.Chg (%)
NHPC	1116	1256	12.5	30.5	0.2	HDIL	3080	3928	27.5	63.25	[7.7]
IGL	1933	2136	10.5	1052.1	2.4	VOLTAS	2827	3370	19.2	337.45	[1.4]
ITC	18438	20279	10	275.35	1.3	TATAM					
TCS	21834	23492	7.6	2431	0.9	OTORS	25866	30381	17.5	438	[9.9]
M&M	9039	9658	6.9	1306.15	0.2	TATAMT					
						RDVR	8368	9601	14.7	268.65	[10.5]
						HEROM					
						OTOCO	7745	8793	13.5	3105.7	[2.1]

Nifty declined by 0.77% with Nifty future added 19.0 lakh shares in open interest and stock future added 137.2 Lakh shares in open interest.

- Nifty PCR decreased to 1.04 from 1.11
- Total Nifty Calls added 39.3 lakh shares in open interest.
- Total Nifty Puts shaded 7.3 lakh shares in open interest.
- Maximum open interest (Nifty) in Calls for Jan series is at 9000 and 8500 put.
- FII's bought net Rs.225.84 Cr(provisional), while DIIs bought net Rs.248.98 Cr in cash market.
- FII sold net Rs.434.45 Cr in F&O
- Securities in Ban Period: IBREALEST, IFCI, JETAIRWAYS, JINDALSTEL, RCOM, TV18BRDCST & UNIONBANK

Nifty Tracker

PARTICULARS	15/02/2017	14/02/2017	13/02/2017	10/02/2017
Spot	8724.7	8792.3	8805.05	8793.55
% Change in Spot	-0.77%	-0.14%	0.13%	0.17%
Nifty(FUT) Feb	8743.1	8814.85	8815.35	8809.35
Nifty(FUT) Feb Vol.	171595	89528	118500	87575
Nifty(FUT) Feb - OI	25091025	23350950	22318275	21685425
Nifty(FUT) Mar	8777.15	8846.8	8846.3	8839.95
Nifty(FUT) Mar Vol.	10376	5526	5738	3572
Nifty(FUT) Mar - OI	1963875	1820175	1698900	1599450

Trade Statistics for 15/02/2017

PARTICULARS	NO. OF CONTRACTS	TURNOVER (RS. CR.)	PUT CALL RATIO
NSE Index Futures	2,82,993	20074	-
NSE Stock Futures	6,53,513	45634	-
NSE Index Options	58,64,499	4,34,701.02	-
NSE Stock Options	5,10,096	37112	0.54
NSE F&O Total Turnover	73,11,101	537,521	0.86
NSE Cash Turnover	-	22,330.34	-
BSE Cash Turnover	-	3,412.57	-
Total Turnover	-	563264	-

FII Corner (F&O)

FII NET BUYING/SELLING & CHANGE IN OPEN INTEREST (Cr. Rupee)						
PARTICULARS	15/02/2017		14/02/2017		13/02/2017	
	Net Buying /Selling	Change In Open interest	Net Buying /Selling	Change In Open interest	Net Buying /Selling	Change In Open interest
Index Future	689	1558	1321	1222	754	951
Index option	742	1451	138	1873	178	619
Stock Future	-1667	-59	-690	240	-393	394
Stock option	-198	248	20	268	-265	240
Total	-434	3198	789	3603	274	2204

Market Open Interest

ADDITION/REDUCTION IN MARKET OPEN INTEREST					
Contracts	15/02/2017	14/02/2017	13/02/2017	10/02/2017	09/02/2017
Index Futures	1403	1092	909	187	-316
Index Options	-433	458	297	205	775
Stock Futures	6674	3638	4772	-23915	17078
Stock Options	748	923	1004	1520	1185
F&O Total	8391	6112	6981.79	-22002.87	18721.87

Nifty Option Open Interest Statistics

NIFTY OPTIONS HIGHEST ADDITION IN OPEN INTEREST						
Expiry	Strike	Option Type	Settlement Price	Volume	Open Interest	Change In OI
23-Feb-17	9000	CE	4.5	230346	7856550	809550
23-Feb-17	8800	CE	36.6	415749	5926200	771825
30-Mar-17	8500	PE	64.6	15458	1694250	382950
23-Feb-17	8700	CE	86.65	116131	2955150	339375
23-Feb-17	9100	CE	1.9	67035	3312075	333375
23-Feb-17	8750	CE	57.95	26220	660600	324900
30-Mar-17	8600	PE	88.3	14977	1321125	305175
30-Mar-17	8700	PE	119.65	14902	1074525	298650
27-Apr-17	9500	CE	16.75	5078	1290525	252150
30-Mar-17	9000	CE	58.2	18756	2173200	249750

NIFTY OPTIONS HIGHEST REDUCTION IN OPEN INTEREST						
Expiry	Strike	Option Type	Settlement Price	Volume	Open Interest	Change In OI
23-Feb-17	8800	PE	92.3	274670	3852975	-984150
23-Feb-17	8700	PE	45.5	311841	4576275	-580200
23-Feb-17	8600	PE	21.25	201243	3964950	-443400
23-Feb-17	9200	CE	1	21848	2182275	-332550
23-Feb-17	8900	PE	166.6	52275	692025	-229650
23-Feb-17	8750	PE	64.75	35941	715350	-118500
23-Feb-17	8600	CE	159.95	18731	1400400	-114150
23-Feb-17	8500	CE	250.35	4252	1110375	-112950
23-Feb-17	8300	PE	3.15	27376	3523350	-93075
23-Feb-17	8000	PE	1.4	7713	2817825	-85350

Stock Option Open Interest Statistics

STOCK OPTIONS WITH HIGHEST ADDITION IN OPEN INTEREST							
Symbol	Expiry	Strike	Option Type	Settl. Price	Volume	Open Interest	Change in OI
TATAMOTORS	23-Feb-17	460	CE	2.9	15061	4975500	4882500
TATAMOTORS	23-Feb-17	480	CE	1	10338	3742500	2841000
DLF	23-Feb-17	140	CE	2.15	1839	2885000	1995000
TV18BRDCST	23-Feb-17	45	CE	0.1	318	6511000	1870000
TATAMOTORS	23-Feb-17	420	PE	3.85	8348	1831500	1654500
DLF	23-Feb-17	145	CE	1	2400	2655000	1575000
TATAMOTORS	23-Feb-17	440	CE	8.75	4863	1546500	1543500
PNB	23-Feb-17	145	CE	1.2	1753	4767000	1519000
TV18BRDCST	23-Feb-17	40	CE	0.5	310	4794000	1394000
PNB	23-Feb-17	140	CE	2.8	1005	3241000	1358000

STOCK OPTIONS WITH HIGHEST REDUCTION IN OPEN INTEREST							
Symbol	Expiry	Strike	Option Type	Settl. Price	Volume	Open Int.	Change in OI
JPASSOCIAT	30-Mar-17	2.5	PE	0.05	47	0	-3196000
JPASSOCIAT	23-Feb-17	20	CE	0.05	34	6664000	-2312000
JPASSOCIAT	23-Feb-17	12.5	PE	0.65	34	5576000	-1428000
IFCI	23-Feb-17	35	CE	0.05	144	12562000	-1386000
GMRINFRA	23-Feb-17	15	CE	0.1	167	13995000	-1305000
SAIL	23-Feb-17	60	PE	1.6	410	1932000	-1188000
DLF	23-Feb-17	140	PE	4.9	2604	1420000	-1170000
PFC	23-Feb-17	140	CE	0.25	340	1482000	-942000
DLF	23-Feb-17	145	PE	8.6	710	785000	-935000
RPOWER	23-Feb-17	50	CE	0.1	96	6252000	-804000

Research Team

Name	Designation	Email ID	Contact No.
Paras Bothra	President Equity Research	paras@ashikagroup.com	+91 22 6611 1704
Krishna Kumar Agarwal	Equity Research Analyst	krishna.a@ashikagroup.com	+91 33 4036 0646
Partha Mazumder	Equity Research Analyst	partha.m@ashikagroup.com	+91 33 4036 0647
Arijit Malakar	Equity Research Analyst	amalakar@ashikagroup.com	+91 33 4036 0644
Kapil Jagasia, CFA	Equity Research Analyst	kapil.j@ashikagroup.com	+91 22 6611 1715
Tirthankar Das	Technical & Derivative Analyst	tirthankar.d@ashikagroup.com	+91 33 4036 0645

SEBI Registration No. INH000000206

Disclosure

The Research Analysts and /or Ashika Stock Broking Limited do hereby certify that all the views expressed in this research report accurately reflect their views about the subject issuer(s) or securities. Moreover, they also certify the followings:-

- The Research Analyst or Ashika Stock Broking Limited or his/its Associates or his/its relative, has any financial interest in the subject company (ies) covered in this report. **Yes**
- The Research Analyst or Ashika Stock Broking Limited or his/its Associates or his/its relative, have actual/beneficial ownership of 1% or more in the subject company, at the end of the month immediately preceding the date of the publication of the research report. **No**
- The Research Analyst or Ashika Stock Broking Limited or his/its Associates or his/its relatives has any material conflict of interest at the time of publication of the research report. **No**
- The Research Analyst or Ashika Stock Broking Limited or his/its Associates have received compensation for investment banking or merchant banking or brokerage services or for product other than for investment banking or merchant banking or brokerage services from the companies covered in this report in the past 12 months. **No**
- The Research Analyst or Ashika Stock Broking Limited or his/its Associates have managed or co managed in the previous 12 months any private or public offering of securities for the company (ies) covered in this report. **No**
- The Research Analyst or Ashika Stock Broking Limited or his/its Associates have received any compensation or other benefits from the company (ies) covered in this report or any third party in connection with the Research Report. **No**
- The Research Analyst has served as an officer, director or employee of the company (ies) covered in the research report. **No**
- The Research Analyst or Ashika Stock Broking Limited has been engaged in Market making activity of the company (ies) covered in the research report. **No**

Disclaimer

This report is for the personal information of the authorized recipient and does not construe to be any investment, legal or taxation advice to you. Ashika Stock Broking Ltd. is not soliciting any action based upon it. This report is not for public distribution and has been furnished to you solely for your information and should not be reproduced or redistributed to any other person in any form. The report is based upon information that we consider reliable, but we do not represent that it is accurate or complete, and it should not be relied upon such. Ashika Stock Broking Ltd. or any of its affiliates or employees shall not be in anyway responsible for any loss or damage that may arise to any person from any inadvertent error in the information contained in this report. Ashika Stock Broking Ltd., or any of its affiliates or employees do not provide, at any time, any express or implied warranty of any kind, regarding any matter pertaining to this report, including without limitation the implied warranties of merchantability, fitness for a particular purpose, and non-infringement. The recipients of this report should rely on their own investigations.