

Technical Report

Closing Brief

Nifty staged a gap up opening buoyed by global sentiments after the Fed raised interest rates for the second consecutive time in the last four months. The index opened at fresh highs and ended the day higher with gains of 0.76% at 9153.70 for the day.

Technical Build up

- ❖ Doji candle with decrease in volume
- ❖ Buy crossover in oscillators.
- ❖ Upper band of Bollinger exist at 9078
- ❖ Crucial moving average of 20/50 SMA are at 8907 and 8663
- ❖ 200 SMA trend deciding level exist at 8487

Outlook for the day

Indian Equity market resumed its uptrend after a day of pause and gained nearly a percent. Sentiment was upbeat mainly in response to the US Fed's policy stance, which fell in line with market expectation. On the technical front, registered a fresh life time high of 9158, it witnessed a range breakout and now it has to continue to hold above 9119 to extend its up move towards 9250. RSI in daily chart though entered into overbought territory but still below the recent peak of 74.56. The Index has been making higher top - higher bottom formation on weekly charts and supports are shifting higher hence the larger trend remains positive. It has been respecting its 13 EMA in 2017 which could act as the next support for the index. Thus the first support now comes in at 9100 and resistance at 9200 for the next couple of sessions. On the option front data witnessed unwinding in 9100Ce and addition in 9200 & 9300 CE. Put accumulation was witnessed across strikes of 8800-9000 indicating writers are active. Overall option indicative band is at to 8800-9200.

Technical & Derivative Report

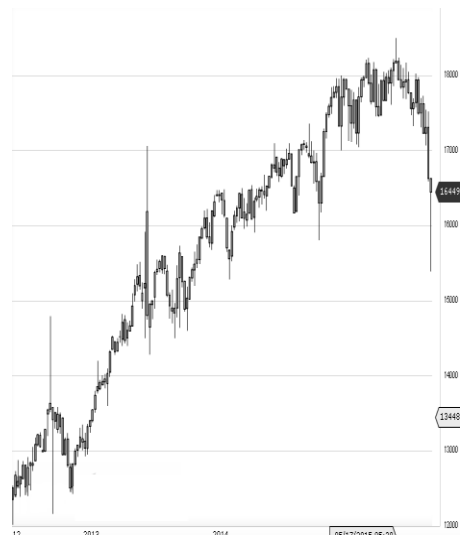
World Indices	LTP	Daily Ch(Pts)	Daily Ch(%)
Dow Jones	20934	-15	-0.07
Nasdaq	5900	0	0.01
S&P 500	2381	-3	-0.16
FTSE 100	7415	47	0.64
DAX	12083	73	0.61
Hang Seng	24364	76	0.32
Nikkei	19523	-66	-0.34
Sensex	29585	187	0.64
Nifty	9153	68	0.76

Commodity /Forex	LTP	Daily Ch(Pts)	Daily Ch(%)
Gold (\$/Oz)	1226.90	-0.20	-0.02
Silver (\$/Oz)	17.31	-0.02	-0.12
Copper(USD/lb.)	267.45	-0.30	-0.11
Brent Crude(USD/bbl)	51.78	0.04	0.08
USD/INR	65.40	-0.28	-0.43
USD/YEN	113.47	0.16	0.14
USD/EUR	1.0773	0.0007	0.07

Support/Resistance levels for Indian Equity Indices					
	S1	S2	CMP	R1	R2
Sensex	29410	28210	29585	29740	29910
Nifty	9100	9040	9153	9200	9250
Nifty (Fut)	9125	9065	9176	9225	9275

Pivot Level	
Sensex	29561
Nifty	9146

US: US market closed mostly lower Thursday as modest gains in financial stocks failed to offset declines in health care and utilities stocks. Technically DJIA is presently trading at the 5th leg through Elliot wave count with negative divergence in oscillators.



Increase in OI with Increase in Price (Long Buildup)					
Symbol	Prev OI	Curr OI	OI Chg (%)	Curr Pr.	Pr.Chg (%)
GODREJI					
ND	918	1117	21.7	516.8	3.3
RELCAPIT					
TAL	6808	8180	20.2	609.3	9.1
BAJAJ-AUTO					
JUSTDIAL					
L	2215	2620	18.3	615.3	4.6
PCJEWELLER					
LLER	595	689	15.8	419	8.1

Increase in OI with Decrease in Price (Short Buildup)					
Symbol	Prev OI	Curr OI	OI Chg (%)	Curr Pr.	Pr.Chg (%)
STAR	3154	3569	13.2	1147	[0.6]
COALINDIA					
DIA	9245	10436	12.9	294	[0.1]
CONCOR					
R	2553	2726	6.8	1240.75	[0.9]
CADILAH					
HC	2280	2358	3.4	443.5	[0.9]
HEXAWARE					
ARE	1331	1351	1.5	224	[0.5]

Nifty gained by 0.76% with Nifty future added 10.3 lakh shares in open interest and stock future added 513.1 Lakh shares in open interest.

- Nifty PCR increased to 1.09 from 1.02
- Total Nifty Calls shaded 13.7 lakh shares in open interest.
- Total Nifty Puts added 30.0 lakh shares in open interest.
- Maximum open interest (Nifty) in Calls for Jan series is at 9200 and 8800 put.
- FII's bought net Rs.1360.1 Cr(provisional), while DIIs sold net Rs.88.17 Cr in cash market.
- FII bought net Rs.1997.15 Cr in F&O
- Securities in Ban Period: BHARATFIN, CENTURYTEX, JINDALSTEL, JPASSOCIAT & RCOM

Nifty Tracker

PARTICULARS	16/03/2017	15/03/2017	14/03/2017	10/03/2017
Spot	9153.7	9084.8	9087	8934.55
% Change in Spot	0.76%	-0.02%	1.71%	0.08%
Nifty(FUT) Mar	9176.15	9109.3	9103	8958.7
Nifty(FUT) Mar Vol.	99303	73550	190327	115008
Nifty(FUT) Mar - OI	26046375	25283175	25192800	23349375
Nifty(FUT) Apr	9201.55	9138.35	9127.4	8985.4
Nifty(FUT) Apr Vol.	6016	6066	11864	6343
Nifty(FUT) Apr - OI	4244850	4029675	3884850	3607500

Trade Statistics for 16/03/2017

PARTICULARS	NO. OF CONTRACTS	TURNOVER (RS. CR.)	PUT CALL RATIO
NSE Index Futures	1,68,155	12488	-
NSE Stock Futures	6,42,569	48643	-
NSE Index Options	69,08,023	5,61,862.19	-
NSE Stock Options	3,97,577	30819	0.44
NSE F&O Total Turnover	81,16,324	653,812	0.85
NSE Cash Turnover	-	24,578.69	-
BSE Cash Turnover	-	7,287.65	-
Total Turnover	-	685679	-

FII Corner (F&O)

FII NET BUYING/SELLING & CHANGE IN OPEN INTEREST (Cr. Rupee)						
PARTICULARS	16/03/2017		15/03/2017		14/03/2017	
	Net Buying /Selling	Change In Open interest	Net Buying /Selling	Change In Open interest	Net Buying /Selling	Change In Open interest
Index Future	858	1225	-237	62	1837	3376
Index option	1484	1096	1025	1024	3389	1054
Stock Future	-166	1490	-379	1024	499	1777
Stock option	-178	308	-94	200	-109	291
Total	1998	4119	315	2310	5616	6497

Market Open Interest

ADDITION/REDUCTION IN MARKET OPEN INTEREST					
Contracts	16/03/2017	15/03/2017	14/03/2017	10/03/2017	09/03/2017
Index Futures	1061	280	2931	699	1299
Index Options	2013	1205	2684	160	-286
Stock Futures	17171	5330	2281	-17353	17442
Stock Options	785	213	672	1072	1109
F&O Total	21030	7028	8567.2	-15421.87	19563.47

Nifty Option Open Interest Statistics

NIFTY OPTIONS HIGHEST ADDITION IN OPEN INTEREST						
Expiry	Strike	Option Type	Settlement Price	Volume	Open Interest	Change In OI
30-Mar-17	9100	PE	42.9	152992	4094550	826275
30-Mar-17	9200	PE	82.4	59791	1483575	487575
30-Mar-17	9200	CE	58.55	171378	5410950	446925
30-Mar-17	8800	PE	6.75	98287	5906325	324075
30-Mar-17	8900	PE	11.55	115493	5158500	295575
30-Mar-17	9000	PE	21.95	138385	4827225	277950
25-May-17	9300	CE	157.6	3597	330300	236700
30-Mar-17	9150	PE	59.75	12585	273075	184875
25-May-17	8700	PE	52	3161	250125	173400
30-Mar-17	9350	CE	13.85	9922	388275	146925

NIFTY OPTIONS HIGHEST REDUCTION IN OPEN INTEREST						
Expiry	Strike	Option Type	Settlement Price	Volume	Open Interest	Change In OI
30-Mar-17	9100	CE	115.9	120756	3447825	-1254150
30-Mar-17	9000	CE	193.7	39381	2834400	-805875
30-Mar-17	9500	CE	3.3	45997	4213125	-523875
30-Mar-17	8600	PE	2.9	26295	2286375	-393450
30-Mar-17	8900	CE	284.95	7399	1715550	-135450
30-Mar-17	8000	PE	1.15	3034	1403775	-93900
30-Mar-17	9700	CE	1.05	3960	562275	-82050
30-Mar-17	8800	CE	379.1	3557	959325	-67650
30-Mar-17	8500	CE	675.75	1977	1171800	-63675
30-Mar-17	8300	PE	1.6	4421	1470900	-62175

Stock Option Open Interest Statistics

STOCK OPTIONS WITH HIGHEST ADDITION IN OPEN INTEREST							
Symbol	Expiry	Strike	Option Type	Settl. Price	Volume	Open Interest	Change in OI
IDEA	30-Mar-17	120	CE	2.5	3169	10549000	2380000
SINTEX	30-Mar-17	100	PE	2.45	273	1888125	1282500
IDEA	30-Mar-17	125	CE	1.4	1218	6468000	1274000
IFCI	30-Mar-17	37.5	CE	0.05	74	2398000	1122000
GMRINFRA	27-Apr-17	17.5	CE	1.3	30	1260000	1080000
IDEA	30-Mar-17	100	PE	0.8	789	6377000	966000
GMRINFRA	30-Mar-17	12.5	PE	0.05	21	5760000	945000
HINDALCO	30-Mar-17	195	PE	3.2	881	1442000	920500
ICICIBANK	30-Mar-17	290	CE	4.5	2823	4755000	882500
HDIL	30-Mar-17	67.5	PE	0.3	119	1848000	880000

STOCK OPTIONS WITH HIGHEST REDUCTION IN OPEN INTEREST							
Symbol	Expiry	Strike	Option Type	Settl. Price	Volume	Open Int.	Change in OI
HINDALCO	30-Mar-17	190	CE	10.85	1147	1827000	-1666000
VEDL	30-Mar-17	260	CE	9.2	2418	2485000	-1326500
HINDALCO	30-Mar-17	200	CE	4.95	3717	6821500	-1179500
BEL	30-Mar-17	160	CE	6.9	704	1705500	-1035000
FEDERALBNK	30-Mar-17	85	CE	4.8	263	2068000	-1034000
JPASSOCIAT	30-Mar-17	17.5	CE	0.15	36	25296000	-952000
HINDALCO	30-Mar-17	195	CE	7.3	1612	1393000	-892500
RCOM	30-Mar-17	40	CE	0.8	165	10896000	-864000
SAIL	30-Mar-17	62.5	CE	2.45	541	2340000	-852000
TATASTEEL	30-Mar-17	500	CE	10.7	5446	1596000	-700000

Research Team

Name	Designation	Email ID	Contact No.
Paras Bothra	President Equity Research	paras@ashikagroup.com	+91 22 6611 1704
Krishna Kumar Agarwal	Equity Research Analyst	krishna.a@ashikagroup.com	+91 33 4036 0646
Partha Mazumder	Equity Research Analyst	partha.m@ashikagroup.com	+91 33 4036 0647
Arijit Malakar	Equity Research Analyst	amalakar@ashikagroup.com	+91 33 4036 0644
Kapil Jagasia, CFA	Equity Research Analyst	kapil.j@ashikagroup.com	+91 22 6611 1715
Tirthankar Das	Technical & Derivative Analyst	tirthankar.d@ashikagroup.com	+91 33 4036 0645

SEBI Registration No. INH000000206

Disclosure

The Research Analysts and /or Ashika Stock Broking Limited do hereby certify that all the views expressed in this research report accurately reflect their views about the subject issuer(s) or securities. Moreover, they also certify the followings:-

- The Research Analyst or Ashika Stock Broking Limited or his/its Associates or his/its relative, has any financial interest in the subject company (ies) covered in this report. **Yes**
- The Research Analyst or Ashika Stock Broking Limited or his/its Associates or his/its relative, have actual/beneficial ownership of 1% or more in the subject company, at the end of the month immediately preceding the date of the publication of the research report. **No**
- The Research Analyst or Ashika Stock Broking Limited or his/its Associates or his/its relatives has any material conflict of interest at the time of publication of the research report. **No**
- The Research Analyst or Ashika Stock Broking Limited or his/its Associates have received compensation for investment banking or merchant banking or brokerage services or for product other than for investment banking or merchant banking or brokerage services from the companies covered in this report in the past 12 months. **No**
- The Research Analyst or Ashika Stock Broking Limited or his/its Associates have managed or co managed in the previous 12 months any private or public offering of securities for the company (ies) covered in this report. **No**
- The Research Analyst or Ashika Stock Broking Limited or his/its Associates have received any compensation or other benefits from the company (ies) covered in this report or any third party in connection with the Research Report. **No**
- The Research Analyst has served as an officer, director or employee of the company (ies) covered in the research report. **No**
- The Research Analyst or Ashika Stock Broking Limited has been engaged in Market making activity of the company (ies) covered in the research report. **No**

Disclaimer

This report is for the personal information of the authorized recipient and does not construe to be any investment, legal or taxation advice to you. Ashika Stock Broking Ltd. is not soliciting any action based upon it. This report is not for public distribution and has been furnished to you solely for your information and should not be reproduced or redistributed to any other person in any form. The report is based upon information that we consider reliable, but we do not represent that it is accurate or complete, and it should not be relied upon such. Ashika Stock Broking Ltd. or any of its affiliates or employees shall not be in anyway responsible for any loss or damage that may arise to any person from any inadvertent error in the information contained in this report. Ashika Stock Broking Ltd., or any of its affiliates or employees do not provide, at any time, any express or implied warranty of any kind, regarding any matter pertaining to this report, including without limitation the implied warranties of merchantability, fitness for a particular purpose, and non-infringement. The recipients of this report should rely on their own investigations.