

Technical Report

Closing Brief

Markets closed in green in previous trading session on account of a post noon rally prompted by easing geopolitical tensions and positive global markets. Nifty missed the 9900 level in a hairbreadth and closed at 9897.30 up by 103.15 points or 1.05 %.

Technical Build up

- ❖ Bullish candle with increase in volume
- ❖ Buy crossover in oscillators.
- ❖ Upper band of Bollinger exist at 9801
- ❖ Crucial moving average of 20/50 SMA are at 9960 and 9782
- ❖ 200 SMA trend deciding level exist at 9016

Outlook for the day

Indian Equity market rebounded swiftly today and gained nearly a percent on easing tension between the US and North Korea that triggered recovery across the globe, including our markets. Stocks of consumer goods companies were back in the limelight on value-buying, recovering from recent losses sparked by worries over the impact from recently launched GST in July. On the technical front, bullish candle formed on the daily chart for the second consecutive day in a row signifying a bullish structural buildup. Nifty closed decisively above the 50 dma, though the fact remains that the pace of recent correction on relatively higher volumes is suggesting that Nifty might have formed a multi-week top around 10137 and hence, it is not going to be that easy for the bulls to get past the said without undergoing time-wise correction. Going ahead Nifty has immediate support around 9800 levels and next support is at 9750 levels. Immediate resistance is around 9920 and next resistance is around 9970 levels. On the option front maximum Call open interest stands at strike price of 10000 while maximum put open interest was seen at strike price of 9500

Technical & Derivative Report

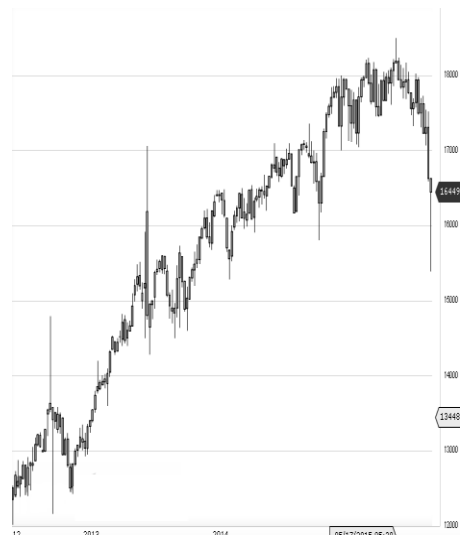
World Indices	LTP	Daily Ch(Pts)	Daily Ch(%)
Dow Jones	22024	25	0.12
Nasdaq	6345	12	0.19
S&P 500	2468	3	0.14
FTSE 100	7433	49	0.67
DAX	12263	86	0.71
Hang Seng	27409	234	0.86
Nikkei	19719	-9	-0.05
Sensex	31770	321	1.02
Nifty	9897	103	1.05

Commodity /Forex	LTP	Daily Ch(Pts)	Daily Ch(%)
Gold (\$/Oz)	1289.30	6.40	0.50
Silver (\$/Oz)	17.09	0.15	0.89
Copper(USD/lb.)	296.45	1.10	0.37
Brent Crude(USD/bbl)	50.40	0.13	0.26
USD/INR	64.15	0.03	0.05
USD/YEN	109.94	-0.25	-0.23
USD/EUR	1.1770	0.0003	0.03

Support/Resistance levels for Indian Equity Indices					
	S1	S2	CMP	R1	R2
Sensex	31445	31285	31770	31850	32010
Nifty	9800	9750	9897	9920	9970
Nifty (Fut)	9810	9760	9904	9930	9980

Pivot Level	
Sensex	31658
Nifty	9858

US: US market closed higher Wednesday but backlash from the business community against President Donald Trump kept gains in check. Technically DJIA is presently trading at the 5th leg through Elliot wave count with negative divergence in oscillators.



Increase in OI with Increase in Price (Long Buildup)						Increase in OI with Decrease in Price (Short Buildup)					
Symbol	Prev OI	Curr OI	OI Chg (%)	Curr Pr.	Pr.Chg (%)	Symbol	Prev OI	Curr OI	OI Chg (%)	Curr Pr.	Pr.Chg (%)
MFSL	3500000	4819000	37.7	609.05	1.4	HAVELL	2988000	3450000	15.5	466.05	[2.6]
JSWENE	6467650	7386500				MARICO	4290000	4859400	13.3	318.8	[0.4]
RGY	0	0	14.2	64.6	0.1		1054080				
HEROM						BIOCON	9522000	0	10.7	328.45	[6.2]
OTOCO	855600	968200	13.2	4017.4	1.5	ASIANP					
ASHOKL	4403000	4929400				AINT	2695800	2901600	7.6	1141.5	[1.3]
EY	0	0	12	105.35	0.1	BAJAJ-AUTO	1110250	1187250	6.9	2836.05	[0.0]
ICIL	9030000	9887500	9.5	118.15	4.8						

Nifty gained by 1.05% with Nifty future added 9.2 lakh shares in open interest and stock future added 430.8 Lakh shares in open interest.

- Nifty PCR increased to 1.18 from 1.12
- Total Nifty Calls shaded 25.6 lakh shares in open interest.
- Total Nifty Puts added 14.5 lakh shares in open interest.
- Maximum open interest (Nifty) in Calls for July series is at 10000 and 9500 put.
- FII's sold net Rs. 1090.1 Cr(provisional), while DIIs bought net Rs.1336.91 Cr in cash market.
- FII sold net Rs.1714.24 Cr in F&O
- Securities in Ban Period: FORTIS, HDIL, IBREALEST, JPASSOCIAT & JSWENERGY

Nifty Tracker

PARTICULARS	16/08/2017	14/08/2017	11/08/2017	10/08/2017
Spot	9897.3	9794.15	9710.8	9820.25
% Change in Spot	1.05%	0.86%	-1.11%	-0.89%
Nifty(FUT) Aug	9904.95	9815.6	9741.05	9854.75
Nifty(FUT) Aug Vol.	145494	91112	173868	141549
Nifty(FUT) Aug - OI	23589450	22828950	23310075	22531950
Nifty(FUT) Sep	9937.6	9846.9	9772.3	9885.9
Nifty(FUT) Sep Vol.	6346	3940	7484	5680
Nifty(FUT) Sep - OI	1515525	1358100	1343400	1296525

Trade Statistics for 16/08/2017

PARTICULARS	NO. OF CONTRACTS	TURNOVER (RS. CR.)	PUT CALL RATIO
NSE Index Futures	2,78,321	23413	-
NSE Stock Futures	6,96,310	50748	-
NSE Index Options	80,98,871	7,38,119.79	-
NSE Stock Options	4,94,760	37689	0.47
NSE F&O Total Turnover	95,68,262	849,970	0.79
NSE Cash Turnover	-	26,122.12	-
BSE Cash Turnover	-	4401.84	-
Total Turnover	-	880494	-

FII Corner (F&O)

FII NET BUYING/SELLING & CHANGE IN OPEN INTEREST (Cr. Rupee)						
PARTICULARS	16/08/2017		14/08/2017		11/08/2017	
	Net Buying /Selling	Change In Open interest	Net Buying /Selling	Change In Open interest	Net Buying /Selling	Change In Open interest
Index Future	-1683	653	-453	-346	-1408	2431
Index option	-224	1842	1557	2267	529	3642
Stock Future	201	897	571	1189	-88	196
Stock option	-8	298	-3	279	-140	541
Total	-1714	3690	1672	3389	-1107	6809

Market Open Interest

ADDITION/REDUCTION IN MARKET OPEN INTEREST					
Contracts	16/08/2017	14/08/2017	11/08/2017	10/08/2017	09/08/2017
Index Futures	1319	-334	248	-1443	-237
Index Options	3061	2995	-1450	-5541	-1502
Stock Futures	8478	7057	-27509	13617	10952
Stock Options	444	441	366	328	1421
F&O Total	13302	10159	-28345.24	6960.54	10634.1

Nifty Option Open Interest Statistics

NIFTY OPTIONS HIGHEST ADDITION IN OPEN INTEREST						
Expiry	Strike	Option Type	Settlement Price	Volume	Open Interest	Change In OI
31-Aug-17	9800	PE	61.15	222226	5266650	645525
31-Aug-17	9600	PE	26.3	127571	4151550	470775
31-Aug-17	9900	PE	94.4	79292	3051225	441525
31-Aug-17	9700	PE	39.4	185051	4462800	203475
31-Aug-17	10000	PE	144.1	24412	2773350	149625
28-Sep-17	9800	PE	120.2	11293	977175	141975
31-Aug-17	9850	PE	75.35	9502	338325	136575
28-Sep-17	9300	PE	34.4	6427	363000	88725
28-Sep-17	9600	PE	73.25	7977	792150	86100
28-Sep-17	9200	PE	26.45	4815	398325	82425

NIFTY OPTIONS HIGHEST REDUCTION IN OPEN INTEREST						
Expiry	Strike	Option Type	Settlement Price	Volume	Open Interest	Change In OI
31-Aug-17	9400	PE	12.95	48518	2199900	-708450
31-Aug-17	10500	CE	3.05	25385	3009900	-386475
31-Aug-17	9900	CE	98.6	231934	3286800	-385575
31-Aug-17	9700	CE	239.35	27386	1396050	-358500
31-Aug-17	10050	CE	36.25	23040	511050	-327225
31-Aug-17	10300	CE	6.5	32515	2833725	-243075
31-Aug-17	10200	CE	12.1	76523	4506300	-216375
31-Aug-17	10500	PE	593.35	3298	1044750	-191025
31-Aug-17	9200	PE	7.4	23854	2048925	-131925
31-Aug-17	10400	CE	4	12780	2500275	-124800

Stock Option Open Interest Statistics

STOCK OPTIONS WITH HIGHEST ADDITION IN OPEN INTEREST							
Symbol	Expiry	Strike	Option Type	Settl. Price	Volume	Open Interest	Change in OI
TATAPOWER	31-Aug-17	85	CE	1.05	1058	3564000	1665000
RCOM	31-Aug-17	25	CE	0.6	936	11228000	1652000
TATAGLOBAL	31-Aug-17	200	CE	4.85	3623	1575000	1138500
GMRINFRA	31-Aug-17	25	CE	0.05	25	8010000	1125000
ASHOKLEY	31-Aug-17	110	CE	1.35	1128	5677000	1099000
TATAGLOBAL	31-Aug-17	205	CE	3.5	1176	976500	976500
SUZLON	31-Aug-17	22.5	CE	0.1	43	28380000	900000
SBIN	31-Aug-17	290	CE	3.95	4153	5259000	891000
SUZLON	31-Aug-17	15	PE	0.1	89	6720000	810000
IDBI	31-Aug-17	55	CE	1.35	373	1952000	736000

STOCK OPTIONS WITH HIGHEST REDUCTION IN OPEN INTEREST							
Symbol	Expiry	Strike	Option Type	Settl. Price	Volume	Open Int.	Change in OI
JPASSOCIAT	31-Aug-17	35	CE	0.05	23	12784000	-1564000
JPASSOCIAT	31-Aug-17	30	CE	0.25	26	12716000	-1224000
JISLJALEQS	31-Aug-17	130	CE	0.15	121	6435000	-972000
JPASSOCIAT	31-Aug-17	25	CE	1.2	59	8568000	-884000
TATAPOWER	31-Aug-17	80	CE	3.25	477	1053000	-864000
GMRINFRA	31-Aug-17	22.5	CE	0.05	45	14670000	-765000
JPASSOCIAT	31-Aug-17	27.5	CE	0.6	43	6120000	-748000
JPASSOCIAT	31-Aug-17	22.5	CE	2.7	15	5916000	-612000
SBIN	31-Aug-17	300	CE	1.9	5185	7509000	-588000
ITC	31-Aug-17	275	CE	7.35	1133	643200	-580800

Research Team

Name	Designation	Email ID	Contact No.
Paras Bothra	President Equity Research	paras@ashikagroup.com	+91 22 6611 1704
Sanjeev Jain	AVP Equity Research	sanjeev.j@ashikagroup.com	+91 33 4036 0650
Krishna Kumar Agarwal	Equity Research Analyst	krishna.a@ashikagroup.com	+91 33 4036 0646
Partha Mazumder	Equity Research Analyst	partha.m@ashikagroup.com	+91 33 4036 0647
Arijit Malakar	Equity Research Analyst	amalakar@ashikagroup.com	+91 33 4036 0644
Kapil Jagasia	Equity Research Analyst	kapil.j@ashikagroup.com	+91 22 6611 1715
Tirthankar Das	Technical & Derivative Analyst	tirthankar.d@ashikagroup.com	+91 33 4036 0645

Ashika Stock Broking Limited ("ASBL") or Research Entity has started its journey in the year 1994 and is engaged in the business of broking services, depository services, distributor of financial products (Mutual fund, IPO & Bonds). This research report has been prepared and distributed by ASBL in the sole capacity of a Research Analyst (Reg No. INH00000206) of SEBI (Research Analyst) Regulations 2014. ASBL is a wholly owned subsidiary of Ashika Global Securities (P) Ltd., a RBI registered non-deposit taking NBFC Company. Ashika group (details is enumerated on our website www.ashikagroup.com) is an integrated financial service provider inter alia engaged in the business of Investment Banking, Corporate Lending, Commodity Broking, Debt Syndication & Other Advisory Services.

There were no significant and material disciplinary actions against ASBL taken by any regulatory authority during last three years.

Disclosure

ASBL or its associates, its Research Analysts (including their relatives) may have financial interest in the subject company(ies). However, the said financial interest is not limited to having an open stock market position in /acting as advisor to /having a loan transaction with the subject company(ies) apart from registration as clients.

- ASBL or its Research Analysts (including their relatives) do not have any actual / beneficial ownership of 1% or more of securities of the subject company(ies) at the end of the month immediately preceding the date of publication of this report or date of the public appearance. However ASBL's associates may have actual / beneficial ownership of 1% or more of securities of the subject company(ies).
- ASBL or their Research Analysts (including their relatives) do not have any other material conflict of interest at the time of publication of this research report or date of the public appearance. However ASBL's associates might have an actual / potential conflict of interest (other than ownership).
- ASBL or its associates may have received compensation for investment banking, merchant banking, and brokerage services and for other products and services from the subject companies during the preceding 12 months. However, ASBL or its associates or its Research analysts (forming part of Research Desk) have not received any compensation or other benefits from the subject companies or third parties in connection with the research report. Moreover, Research Analysts have not received any compensation from the companies mentioned herein in the past twelve months.
- ASBL or their Research Analysts have not managed or co-managed public offering of securities for the subject company(ies) in the past twelve months. However ASBL's associates may have managed or co-managed public offering of securities for the subject company(ies) in the past twelve months.
- Research Analysts have not served as an officer, director or employee of the companies mentioned in the report.
- Neither ASBL nor its Research Analysts have been engaged in market making activity for the companies mentioned in the report.

Disclaimer

The research recommendation and information herein are solely for the personal information of the authorized recipient and does not construe to be an offer documents or any investment, legal or taxation advice or solicitation of any action based upon it. This report is not for public distribution or use by any person or entity, where such distribution, publication, availability or use would be contrary to law, regulation or subject to any registration or licensing requirement. We will not treat recipients as customer by virtue of their receiving this report. The report is based upon the information obtained from public sources that we consider reliable, but we do not guarantee its accuracy or completeness. ASBL shall not be in anyways responsible for any loss or damage that may arise to any such person from any inadvertent error in the information contained in this report. The recipients of this report should rely on their own investigations.