

## Technical Report

### Closing Brief

Benchmark Indices started the day on negative note tracking mixed cues from the Asian peers and were seen trading with sideways to bearish bias throughout the day. Nifty ended the day with a marginal loss of 11.50 points to close at 9139.30 levels.

### Technical Build up

- ❖ Bearish candle with increase in volume
- ❖ Sell crossover in oscillators.
- ❖ Upper band of Bollinger exist at 9285
- ❖ Crucial moving average of 20/50 SMA are at 9157 and 8987
- ❖ 200 SMA trend deciding level exist at 8590

### Outlook for the day

Indian Equity market settled almost flat in a dull trading session today, mirroring global counterparts buffeted by ongoing geo-political headwinds. However, there was relief on the prices front as WPI inflation slipped to 5.70% in March, from 6.55% in February. On the technical front, Occurrence of a Bearish Candle followed by a Shooting Star Candle on the previous week calls for a bearish outlook in the market. Decisively close below the 13DEMA and below the rising trend line indicates that weakness to persist. Nifty has broken its minor support at 9170 levels, which may propel it towards 9100 levels as an immediate target. However, Nifty has support placed around 9080-9100 levels followed by 9050 levels while resistance is seen around 9180-9200 levels followed by 9270 levels. Unless the index crosses the resistance zone of 9250-9270 decisively, further movement of the markets to remain subdued. Thus, it can be expected that Nifty to trade in a range of 9000-9250. On the option front data signifies incremental activity in 9200 & 9250 CE while Puts witnessed writing activity. Immediate option indicative band moves to 9100-9300.



Increase in OI with Increase in Price (Long Buildup)						Increase in OI with Decrease in Price (Short Buildup)					
Symbol	Prev OI	Curr OI	OI Chg (%)	Curr Pr.	Pr.Chg (%)	Symbol	Prev OI	Curr OI	OI Chg (%)	Curr Pr.	Pr.Chg (%)
HDIL	3010	3730	23.9	93.3	8.4	NTPC	5348	5967	11.6	160.5	[2.7]
DLF	7025	8454	20.3	173.75	8.2	RCOM	8097	8976	10.9	33.9	[5.3]
PVR	593	701	18.2	1589.5	1.4	DCBBAN					
DALMIA						K	1488	1622	9	173.85	[3.8]
BHA	1085	1269	17	2140	0.8	JUSTDIA					
ESCORT						L	2857	3107	8.8	500.25	[3.9]
S	805	927	15.2	552.95	0.7	PAGEIN					
						D	706	757	7.2	13870	[1.7]

## Technical & Derivative Report

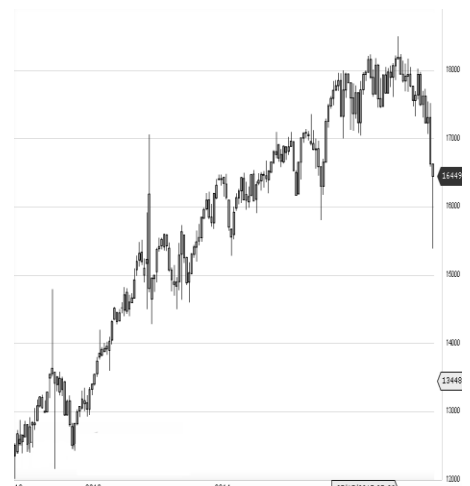
World Indices	LTP	Daily Ch(Pts)	Daily Ch(%)
Dow Jones	20636	183	0.90
Nasdaq	5856	51	0.89
S&P 500	2349	20	0.86
FTSE 100	7327	-21	-0.29
DAX	12109	-45	-0.38
Hang Seng	24058	-203	-0.84
Nikkei	18423	67	0.37
Sensex	29413	-47	-0.16
Nifty	9139	-11	-0.13

Commodity /Forex	LTP	Daily Ch(Pts)	Daily Ch(%)
Gold (\$/Oz)	1286.70	-5.20	-0.40
Silver (\$/Oz)	18.43	-0.09	-0.48
Copper(USD/lb.)	258.25	-1.35	-0.52
Brent Crude(USD/bbl)	55.43	0.07	0.13
USD/INR	64.51	0.10	0.16
USD/YEN	109.14	0.23	0.21
USD/EUR	1.0647	0.0004	0.04

Support/Resistance levels for Indian Equity Indices					
	S1	S2	CMP	R1	R2
Sensex	29210	29110	29413	29550	29780
Nifty	9080	9050	9139	9180	9250
Nifty (Fut)	9110	9080	9168	9210	9280

Pivot Level	
Sensex	29423
Nifty	9139

**US:** US market closed higher on Monday as a weekend filled with geopolitical worries ended more calmly than investors expected, while bank stocks charged ahead. Technically DJIA is presently trading at the 5th leg through Elliot wave count with negative divergence in oscillators.



## Derivative Report

## Technical & Derivative Report

Nifty declined by 0.13% with Nifty future shaded 0.1 lakh shares in open interest and stock future added 477.3 Lakh shares in open interest.

- Nifty PCR remained unchanged at 1.09
- Total Nifty Calls added 18.2 lakh shares in open interest.
- Total Nifty Puts added 16.8 lakh shares in open interest.
- Maximum open interest (Nifty) in Calls for Jan series is at 9300 and 9000 put.
- FII's sold net Rs.250.54 Cr(provisional), while DIIs sold net Rs.52.38 Cr in cash market.
- FII bought net Rs.442.26 Cr in F&O
- Securities in Ban Period: BHARATFIN, IBREALEST, INFIBEAM, JINDALSTEL, JSWENERGY & UJJIVAN

### Nifty Tracker

PARTICULARS	17/04/2017	13/04/2017	12/04/2017	11/04/2017
Spot	9139.3	9150.8	9203.45	9237
% Change in Spot	-0.13%	-0.57%	-0.36%	0.61%
Nifty(FUT) Apr	9168.35	9182.25	9223.2	9264.45
Nifty(FUT) Apr Vol.	67414	88323	149706	105610
Nifty(FUT) Apr - OI	20290425	20401725	20926650	21020175
Nifty(FUT) May	9192.45	9208.6	9245.05	9286.9
Nifty(FUT) May Vol.	3468	5354	5801	4786
Nifty(FUT) May - OI	2550900	2506650	2391675	2390625

### Trade Statistics for 17/04/2017

PARTICULARS	NO. OF CONTRACTS	TURNOVER (RS. CR.)	PUT CALL RATIO
NSE Index Futures	1,17,331	8854	-
NSE Stock Futures	5,31,454	42602	-
NSE Index Options	26,93,393	2,07,725.48	-
NSE Stock Options	4,13,306	33116	0.46
NSE F&O Total Turnover	37,55,484	292,298	0.87
NSE Cash Turnover	-	22,544.32	-
BSE Cash Turnover	-	3478.74	-
Total Turnover	-	318321	-

### FII Corner (F&O)

FII NET BUYING/SELLING & CHANGE IN OPEN INTEREST (Cr. Rupee)						
	17/04/2017		13/04/2017		12/04/2017	
PARTICULARS	Net Buying /Selling	Change In Open interest	Net Buying /Selling	Change In Open interest	Net Buying /Selling	Change In Open interest
Index Future	-79	-9	147	-357	-435	349
Index option	616	827	1984	1652	1786	655
Stock Future	-40	-205	-557	-358	-105	-865
Stock option	-54	63	-202	315	-52	379
Total	443	675	1372	1252	1194	518

### Market Open Interest

ADDITION/REDUCTION IN MARKET OPEN INTEREST					
Contracts	17/04/2017	13/04/2017	12/04/2017	11/04/2017	10/04/2017
Index Futures	-52	-231	-237	855	-65
Index Options	641	187	-407	1779	1389
Stock Futures	-20744	17469	4507	5643	6904
Stock Options	-2634	412	1521	1602	1629
F&O Total	-22789	17836	5384.36	9879.47	9857.26

## Nifty Option Open Interest Statistics

NIFTY OPTIONS HIGHEST ADDITION IN OPEN INTEREST						
Expiry	Strike	Option Type	Settlement Price	Volume	Open Interest	Change In OI
27-Apr-17	9200	CE	50.6	162952	4955025	498000
27-Apr-17	9250	CE	30.45	21945	1103775	431100
27-Apr-17	9100	PE	43.25	170348	5564250	400500
27-Apr-17	9100	CE	108.3	58923	2096925	308100
27-Apr-17	8900	PE	10.35	74468	4030800	293025
25-May-17	8800	PE	29.85	10306	1361250	248475
25-May-17	9400	CE	44.45	10584	1400400	211425
27-Apr-17	9300	CE	17.8	155253	5190150	180975
29-Jun-17	9800	CE	14.65	3421	199875	153150
27-Apr-17	9250	PE	110.65	5035	440850	127125

NIFTY OPTIONS HIGHEST ADDITION IN OPEN INTEREST						
Expiry	Strike	Option Type	Settlement Price	Volume	Open Interest	Change In OI
27-Apr-17	9200	PE	82.95	122413	3918000	-364200
27-Apr-17	9400	CE	4.8	116329	3435375	-215025
27-Apr-17	9600	CE	0.85	15448	1488450	-214650
27-Apr-17	9400	PE	232.3	3582	438825	-95475
27-Apr-17	9350	CE	9	16720	754500	-87075
25-May-17	9800	CE	2.65	2610	191325	-78600
27-Apr-17	9300	PE	146.8	26578	1271925	-78450
27-Apr-17	8600	CE	566.7	1667	364350	-78300
27-Apr-17	9700	CE	0.55	2240	600675	-71700
27-Apr-17	8700	CE	469.65	1279	516150	-62325

## Stock Option Open Interest Statistics

STOCK OPTIONS WITH HIGHEST ADDITION IN OPEN INTEREST							
Symbol	Expiry	Strike	Option Type	Settl. Price	Volume	Open Interest	Change in OI
ADANIPOWER	27-Apr-17	42.5	CE	0.1	256	12240000	2980000
RCOM	27-Apr-17	35	CE	0.65	806	3948000	2640000
HDIL	27-Apr-17	100	CE	1.9	3294	3032000	2488000
ADANIPOWER	27-Apr-17	35	CE	0.5	718	4560000	2320000
JPASSOCIAT	27-Apr-17	12.5	CE	0.6	91	6120000	2312000
JPASSOCIAT	27-Apr-17	15	CE	0.1	72	22440000	2244000
DLF	27-Apr-17	165	PE	2.1	1516	2170000	1970000
DLF	27-Apr-17	160	PE	1.2	3028	3155000	1825000
IBREALEST	27-Apr-17	120	CE	28.6	867	1680000	1680000
DLF	27-Apr-17	180	CE	3	3326	2135000	1470000

STOCK OPTIONS WITH HIGHEST REDUCTION IN OPEN INTEREST							
Symbol	Expiry	Strike	Option Type	Settl. Price	Volume	Open Int.	Change in OI
IBREALEST	27-Apr-17	110	CE	38.75	794	1520000	-2890000
IBREALEST	27-Apr-17	105	CE	41.85	510	1830000	-2330000
IBREALEST	27-Apr-17	115	CE	33.3	1089	1660000	-2070000
DLF	27-Apr-17	160	CE	14.45	1993	2020000	-1975000
IBREALEST	27-Apr-17	100	CE	48.1	366	7040000	-1360000
HDIL	27-Apr-17	85	CE	9.4	640	1192000	-1152000
IBREALEST	27-Apr-17	95	PE	0.3	433	1030000	-1060000
IDEA	27-Apr-17	95	CE	0.3	734	3969000	-833000
HDIL	27-Apr-17	90	CE	5.7	2612	2712000	-808000
IBREALEST	27-Apr-17	90	PE	0.2	233	1540000	-800000

## Research Team

Name	Designation	Email ID	Contact No.
Paras Bothra	President Equity Research	paras@ashikagroup.com	+91 22 6611 1704
Krishna Kumar Agarwal	Equity Research Analyst	krishna.a@ashikagroup.com	+91 33 4036 0646
Partha Mazumder	Equity Research Analyst	partha.m@ashikagroup.com	+91 33 4036 0647
Arijit Malakar	Equity Research Analyst	amalakar@ashikagroup.com	+91 33 4036 0644
Kapil Jagasia, CFA	Equity Research Analyst	kapil.j@ashikagroup.com	+91 22 6611 1715
Tirthankar Das	Technical & Derivative Analyst	tirthankar.d@ashikagroup.com	+91 33 4036 0645

Ashika Stock Broking Limited ("ASBL") or Research Entity has started its journey in the year 1994 and is engaged in the business of broking services, depository services, distributor of financial products (Mutual fund, IPO & Bonds). This research report has been prepared and distributed by ASBL in the sole capacity of a Research Analyst (Reg No. INH000000206) of SEBI (Research Analyst) Regulations 2014. ASBL is a wholly owned subsidiary of Ashika Global Securities (P) Ltd., a RBI registered non-deposit taking NBFC Company. Ashika group (details is enumerated on our website [www.ashikagroup.com](http://www.ashikagroup.com)) is an integrated financial service provider inter alia engaged in the business of Investment Banking, Corporate Lending, Commodity Broking, Debt Syndication & Other Advisory Services.

There were no significant and material disciplinary actions against ASBL taken by any regulatory authority during last three years.

### Disclosure

ASBL or its associates, its Research Analysts (including their relatives) may have financial interest in the subject company(ies). However, the said financial interest is not limited to having an open stock market position in /acting as advisor to /having a loan transaction with the subject company(ies) apart from registration as clients.

- 1) ASBL or its Research Analysts (including their relatives) do not have any actual / beneficial ownership of 1% or more of securities of the subject company(ies) at the end of the month immediately preceding the date of publication of this report or date of the public appearance. However ASBL's associates may have actual / beneficial ownership of 1% or more of securities of the subject company(ies).
- 2) ASBL or their Research Analysts (including their relatives) do not have any other material conflict of interest at the time of publication of this research report or date of the public appearance. However ASBL's associates might have an actual / potential conflict of interest (other than ownership).
- 3) ASBL or its associates may have received compensation for investment banking, merchant banking, and brokerage services and for other products and services from the subject companies during the preceding 12 months. However, ASBL or its associates or its Research analysts (forming part of Research Desk) have not received any compensation or other benefits from the subject companies or third parties in connection with the research report. Moreover, Research Analysts have not received any compensation from the companies mentioned herein in the past twelve months.
- 4) ASBL or their Research Analysts have not managed or co-managed public offering of securities for the subject company(ies) in the past twelve months. However ASBL's associates may have managed or co-managed public offering of securities for the subject company(ies) in the past twelve months.
- 5) Research Analysts have not served as an officer, director or employee of the companies mentioned in the report.
- 6) Neither ASBL nor its Research Analysts have been engaged in market making activity for the companies mentioned in the report.

### Disclaimer

The research recommendation and information herein are solely for the personal information of the authorized recipient and does not construe to be an offer documents or any investment, legal or taxation advice or solicitation of any action based upon it. This report is not for public distribution or use by any person or entity, where such distribution, publication, availability or use would be contrary to law, regulation or subject to any registration or licensing requirement. We will not treat recipients as customer by virtue of their receiving this report. The report is based upon the information obtained from public sources that we consider reliable, but we do not guarantee its accuracy or completeness. ASBL shall not be in anyways responsible for any loss or damage that may arise to any such person from any inadvertent error in the information contained in this report. The recipients of this report should rely on their own investigations.