

# Technical Report

## Closing Brief

Equity benchmarks closed off day's high for the second consecutive session Wednesday as investors eyed corporate earnings. Globally investors awaited Friday's inauguration of Donald Trump as US president

## Technical Build up

- ❖ Bullish candle with marginal decrease in volume
- ❖ Buy crossover in oscillators.
- ❖ Upper band of Bollinger exist at 8408
- ❖ Crucial moving average of 20/50 SMA are at 8150 and 8180
- ❖ 200 SMA trend deciding level exist at 8288

## Outlook for the day

Indian Equity market managed to settle marginally higher in a volatile trade, continuing its prevailing consolidation phase. Sentiment was positive on good quarterly results, reported impressive economy data (CPI, IIP) and expectation of favorable union budget. On the technical front, Nifty has been hovering around 8400 for last five sessions as index appears to be stuck in a congestion period. A fall below 8373 would result in a corrective move towards 8320, a move below 8320 would result in a trend reversal. Close proximity of RSI towards the overbought zone warrants caution approach and since Nifty tested the gap created post demonetization at 8460 termination can be followed. Supports are placed at 8250-8200, which is the breakout zone for the said pattern below it at 8100 -8150 levels, while resistance is placed at 8500-8550 levels and above it at 8650. On the option front data addition in 8500 CE and unwinding in puts. Indicative band shifts higher to 8300-8500 level.

## Technical & Derivative Report

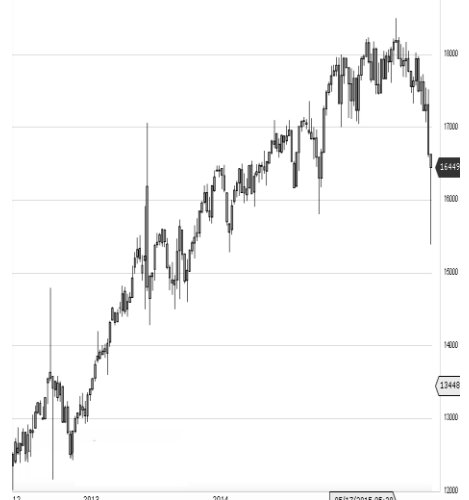
World Indices	LTP	Daily Ch(Pts)	Daily Ch(%)
Dow Jones	19804	-22	-0.10
Nasdaq	5555	16	0.31
S&P 500	2271	4	0.18
FTSE 100	7247	27	0.38
DAX	11599	59	0.51
Hang Seng	23012	-85	-0.37
Nikkei	19075	181	0.96
Sensex	27257	21	0.08
Nifty	8417	19	0.23

Commodity /Forex	LTP	Daily Ch(Pts)	Daily Ch(%)
Gold (\$/Oz)	1201.70	-10.40	-0.86
Silver (\$/Oz)	17.02	-0.25	-1.47
Copper(USD/lb.)	261.90	0.25	0.10
Brent Crude(USD/bbl)	54.37	0.45	0.83
USD/INR	68.07	0.11	0.17
USD/YEN	114.80	0.15	0.13
USD/EUR	1.0627	-0.0003	-0.03

Support/Resistance levels for Indian Equity Indices					
	S1	S2	CMP	R1	R2
Sensex	27100	26930	27257	27400	27580
Nifty	8370	8320	8417	8460	8515
Nifty (Fut)	8385	8335	8429	8475	8530

Pivot Level	
Sensex	27299
Nifty	8424

**US:** US market closed mixed on Wednesday as investors digested remarks from the top Federal Reserve official, having parsed through a series of corporate earnings and economic data. Technically DJIA is presently trading at the 5th leg through Elliot wave count with negative divergence in oscillators.



### Increase in OI with Increase in Price (Long Buildup)

Symbol	Prev OI	Curr OI	OI Chg (%)	Curr Pr.	Pr.Chg (%)
CESC	2469	2726	10.4	689.5	1.1
TATAEL	3028	3285	8.5	1522.05	6.8
COALIN	6398	6793	6.2	309.9	0.8
HINDZIN	2454	2594	5.7	289.2	1.5
TATAM	15113	15797	4.5	524.25	0.1

### Increase in OI with Decrease in Price (Short Buildup)

Symbol	Prev OI	Curr OI	OI Chg (%)	Curr Pr.	Pr.Chg (%)
TORNTP					
HARM	441	486	10.2	1311.75	[1.6]
ENGINE					
RSIN	2466	2666	8.1	152.55	[0.7]
PCJEWELLER	694	737	6.2	379.45	[3.2]
ICICIBANK	18913	20049	6	268.45	[0.1]
CONCOR	2253	2361	4.8	1191	[0.5]

Nifty gained by 0.23% with Nifty future added 10.1 lakh shares in open interest and stock future shaded 341.7 Lakh shares in open interest.

- Nifty PCR decreased to 4 from 1.26
- Total Nifty Calls added 4.1 lakh shares in open interest.
- Total Nifty Puts shaded 2.1 lakh shares in open interest.
- Maximum open interest (Nifty) in Calls for Jan series is at 8500 and 8300 put.
- FII's bought net Rs.319.14 Cr (provisional), while DIIs bought net Rs.245.03 Cr in cash market.
- FII sold net Rs.1532.83 Cr in F&O
- Securities in Ban Period: CENTURYTEX, HDIL, IBREALEST, JINDALSTEL, JPASSOCIAT, JUSTDIAL & RCOM

## Nifty Tracker

PARTICULARS	17/01/2017	16/01/2017	13/01/2017	12/01/2017
Spot	8417	8398	8412.8	8400.35
% Change in Spot	0.23%	-0.18%	0.15%	-0.08%
Nifty(FUT) Jan	8429.35	8408.5	8431.7	8417.7
Nifty(FUT) Jan Vol.	117493	97186	81879	99975
Nifty(FUT) Jan - OI	20561025	19685100	20138625	19916550
Nifty(FUT) Feb	8454.85	8430.9	8455.15	8443.05
Nifty(FUT) Feb Vol.	9390	7353	5702	13049
Nifty(FUT) Feb - OI	2444250	2339325	2162625	2069700

## Trade Statistics for 17/01/2017

PARTICULARS	NO. OF CONTRACTS	TURNOVER (RS. CR.)	PUT CALL RATIO
NSE Index Futures	2,07,615	14204	-
NSE Stock Futures	6,15,310	41246	-
NSE Index Options	50,91,733	3,61,433.88	-
NSE Stock Options	3,97,552	27446	0.49
NSE F&O Total Turnover	63,12,210	444,329	1.04
NSE Cash Turnover	-	19,449.61	-
BSE Cash Turnover	-	3094.42	-
Total Turnover	-	466873	-

## FII Corner (F&O)

FII NET BUYING/SELLING & CHANGE IN OPEN INTEREST (Cr. Rupee)						
PARTICULARS	17/01/2017		16/01/2017		13/01/2017	
	Net Buying /Selling	Change In Open interest	Net Buying /Selling	Change In Open interest	Net Buying /Selling	Change In Open interest
Index Future	-896	1700	-170	-53	-119	1428
Index option	-708	445	-23	1960	-341	3579
Stock Future	167	1030	-305	909	-200	456
Stock option	-96	345	59	434	22	435
Total	-1533	3521	-438	3250	-638	5898

## Market Open Interest

ADDITION/REDUCTION IN MARKET OPEN INTEREST					
Contracts	17/01/2017	16/01/2017	13/01/2017	12/01/2017	11/01/2017
Index Futures	1114	-293	714	460	1425
Index Options	1411	1032	1327	1007	818
Stock Futures	3932	5618	6891	-18606	14070
Stock Options	621	1252	1305	979	921
F&O Total	7077	7609	10237.04	-16160.22	17234.03

## Nifty Option Open Interest Statistics

NIFTY OPTIONS HIGHEST ADDITION IN OPEN INTEREST						
Expiry	Strike	Option Type	Settlement Price	Volume	Open Interest	Change In OI
25-Jan-17	8450	PE	62.8	28663	624225	365925
23-Feb-17	8500	CE	124.45	16759	1877400	231150
23-Feb-17	8600	CE	79.95	14482	1520025	214425
23-Feb-17	8700	CE	48.2	14902	1847925	194925
23-Feb-17	8000	PE	34.8	10830	1806450	186075
25-Jan-17	8350	PE	26.9	38616	1353225	169050
23-Feb-17	8300	PE	91.8	11756	1306725	150600
23-Feb-17	8800	PE	363.2	2743	1159875	132300
25-Jan-17	8400	PE	42.3	281086	4642500	122850
25-Jan-17	8250	PE	11.45	31542	808500	116025

NIFTY OPTIONS HIGHEST REDUCTION IN OPEN INTEREST						
Expiry	Strike	Option Type	Settlement Price	Volume	Open Interest	Change In OI
25-Jan-17	8200	PE	7.7	140664	5750175	-580800
25-Jan-17	8300	PE	18	215019	6274350	-565200
25-Jan-17	8000	PE	2.4	70628	6190725	-368250
25-Jan-17	8400	CE	69.9	215060	4727175	-312150
25-Jan-17	8300	CE	143.9	40264	2790900	-261225
25-Jan-17	8200	CE	231.35	7940	2234475	-161325
25-Jan-17	8500	CE	23.65	257896	4918800	-141525
25-Jan-17	8000	CE	426.1	3366	1197525	-138450
25-Jan-17	8100	PE	3.75	87216	4591950	-123300
25-Jan-17	7600	PE	0.6	4506	1428450	-100800

## Stock Option Open Interest Statistics

STOCK OPTIONS WITH HIGHEST ADDITION IN OPEN INTEREST							
Symbol	Expiry	Strike	Option Type	Settl. Price	Volume	Open Interest	Change in OI
NHPC	25-Jan-17	30	CE	0.15	294	18522000	2025000
TATASTEEL	25-Jan-17	460	PE	4.8	2270	1608000	1182000
ICICIBANK	25-Jan-17	260	CE	10.4	669	4215000	1040000
TATASTEEL	25-Jan-17	450	PE	2.4	1915	2194000	882000
IFCI	25-Jan-17	30	CE	0.2	348	17204000	880000
ADANIPOWER	25-Jan-17	37.5	PE	1.15	152	1220000	840000
VEDL	25-Jan-17	240	PE	2.95	1378	1729000	724500
ASHOKLEY	25-Jan-17	85	PE	0.75	337	1743000	693000
HINDALCO	25-Jan-17	175	PE	2.7	620	1176000	682500
VEDL	25-Jan-17	245	PE	5	464	843500	679000

STOCK OPTIONS WITH HIGHEST REDUCTION IN OPEN INTEREST							
Symbol	Expiry	Strike	Option Type	Settl. Price	Volume	Open Int.	Change in OI
JPASSOCIAT	25-Jan-17	12.5	CE	0.05	63	21692000	-2584000
ADANIPOWER	25-Jan-17	35	CE	3.2	204	4940000	-2540000
BHEL	25-Jan-17	130	CE	4.2	1857	2250000	-1220000
JPASSOCIAT	25-Jan-17	10	CE	0.4	118	17476000	-1156000
ADANIPOWER	25-Jan-17	37.5	CE	1.5	825	7120000	-1040000
ADANIPOWER	25-Jan-17	35	PE	0.3	253	3540000	-840000
VEDL	25-Jan-17	240	CE	7.4	1692	1949500	-791000
SAIL	25-Jan-17	60	CE	1.15	814	4476000	-612000
SBIN	25-Jan-17	245	PE	0.45	941	1362000	-609000
PNB	25-Jan-17	125	CE	5.7	344	4571000	-504000

## Research Team

Name	Designation	Email ID	Contact No.
Paras Bothra	President Equity Research	paras@ashikagroup.com	+91 22 6611 1704
Krishna Kumar Agarwal	Equity Research Analyst	krishna.a@ashikagroup.com	+91 33 4036 0646
Partha Mazumder	Equity Research Analyst	partha.m@ashikagroup.com	+91 33 4036 0647
Arijit Malakar	Equity Research Analyst	amalakar@ashikagroup.com	+91 33 4036 0644
Kapil Jagasia, CFA	Equity Research Analyst	kapil.j@ashikagroup.com	+91 22 6611 1715
Tirthankar Das	Technical & Derivative Analyst	tirthankar.d@ashikagroup.com	+91 33 4036 0645

SEBI Registration No. INH000000206

### Disclosure

The Research Analysts and /or Ashika Stock Broking Limited do hereby certify that all the views expressed in this research report accurately reflect their views about the subject issuer(s) or securities. Moreover, they also certify the followings:-

- The Research Analyst or Ashika Stock Broking Limited or his/its Associates or his/its relative, has any financial interest in the subject company (ies) covered in this report. **Yes**
- The Research Analyst or Ashika Stock Broking Limited or his/its Associates or his/its relative, have actual/beneficial ownership of 1% or more in the subject company, at the end of the month immediately preceding the date of the publication of the research report. **No**
- The Research Analyst or Ashika Stock Broking Limited or his/its Associates or his/its relatives has any material conflict of interest at the time of publication of the research report. **No**
- The Research Analyst or Ashika Stock Broking Limited or his/its Associates have received compensation for investment banking or merchant banking or brokerage services or for product other than for investment banking or merchant banking or brokerage services from the companies covered in this report in the past 12 months. **No**
- The Research Analyst or Ashika Stock Broking Limited or his/its Associates have managed or co managed in the previous 12 months any private or public offering of securities for the company (ies) covered in this report. **No**
- The Research Analyst or Ashika Stock Broking Limited or his/its Associates have received any compensation or other benefits from the company (ies) covered in this report or any third party in connection with the Research Report. **No**
- The Research Analyst has served as an officer, director or employee of the company (ies) covered in the research report. **No**
- The Research Analyst or Ashika Stock Broking Limited has been engaged in Market making activity of the company (ies) covered in the research report. **No**

### Disclaimer

This report is for the personal information of the authorized recipient and does not construe to be any investment, legal or taxation advice to you. Ashika Stock Broking Ltd. is not soliciting any action based upon it. This report is not for public distribution and has been furnished to you solely for your information and should not be reproduced or redistributed to any other person in any form. The report is based upon information that we consider reliable, but we do not represent that it is accurate or complete, and it should not be relied upon such. Ashika Stock Broking Ltd. or any of its affiliates or employees shall not be in anyway responsible for any loss or damage that may arise to any person from any inadvertent error in the information contained in this report. Ashika Stock Broking Ltd., or any of its affiliates or employees do not provide, at any time, any express or implied warranty of any kind, regarding any matter pertaining to this report, including without limitation the implied warranties of merchantability, fitness for a particular purpose, and non-infringement. The recipients of this report should rely on their own investigations.