

Technical Report

Closing Brief

Riding high on the bullish sentiment, Nifty took a breather in the previous trading session and ended lower after staging a gap up opening, post clocking a fresh all time high of 9218.40. The Benchmark Index ended on a flat note at 9160.05

Technical Build up

- ❖ Doji candle with decrease in volume
- ❖ Buy crossover in oscillators.
- ❖ Upper band of Bollinger exist at 9142
- ❖ Crucial moving average of 20/50 SMA are at 8947 and 8702
- ❖ 200 SMA trend deciding level exist at 8499

Outlook for the day

Indian Equity market settled almost unchanged in a volatile session as participants preferred to book some profit taking at higher levels. Strong global market rally, FII's buying and fall in oil price has been boosting the market sentiment. On the technical front, Nifty has given a swing break out at 9119.2 levels making new highs on closing basis at 9160 levels. Overall it has been making higher top – higher bottom formation and supports are shifting higher from 9075 to 9119 on immediate basis. Major trend may remain positive till it holds above psychological 9000 zone. Nifty has supports placed at 9000/9050 levels followed by 8860/8800 on the lower side while on the upside resistance is seen at 9250/9300 followed by 9450 levels. On the option front data witnessed incremental addition in 9200 and 9300 CE and in 9000 & 9200 PE indicating some amount of consolidation in place. Overall immediate option indicative band remains at to 8900-9200.

Technical & Derivative Report

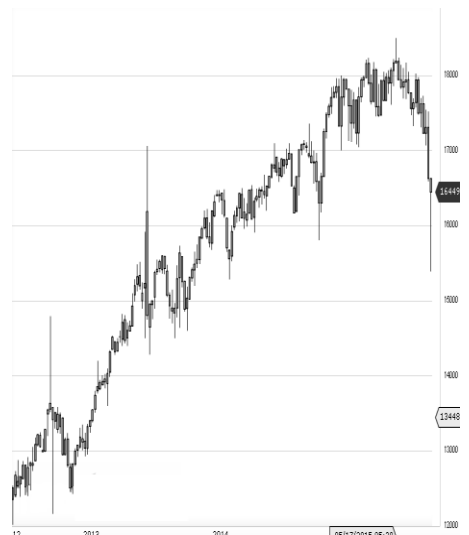
World Indices	LTP	Daily Ch(Pts)	Daily Ch(%)
Dow Jones	20914	-19	-0.10
Nasdaq	5901	-	-
S&P 500	2378	-3	-0.13
FTSE 100	7424	9	0.12
DAX	12095	12	0.10
Hang Seng	24401	91	0.38
Nikkei	19521	-68	-0.35
Sensex	29648	63	0.21
Nifty	9160	6	0.07

Commodity /Forex	LTP	Daily Ch(Pts)	Daily Ch(%)
Gold (\$/Oz)	1230.2	3.10	0.25
Silver (\$/Oz)	17.41	0.08	0.48
Copper(USD/lb.)	269.15	1.40	0.52
Brent Crude(USD/bbl)	51.76	0.02	0.04
USD/INR	65.47	0.06	0.10
USD/YEN	112.70	-0.61	-0.54
USD/EUR	1.0738	-0.0028	-0.26

Support/Resistance levels for Indian Equity Indices					
	S1	S2	CMP	R1	R2
Sensex	29365	29285	29648	29780	30100
Nifty	9075	9050	9160	9200	9300
Nifty (Fut)	9085	9060	9171	9210	9310

Pivot Level		
Sensex		29691
Nifty		9175

US: US market closed mixed Friday, dragged down by declines in financial and health care stocks. Technically DJIA is presently trading at the 5th leg through Elliot wave count with negative divergence in oscillators.



Increase in OI with Increase in Price (Long Buildup)						Increase in OI with Decrease in Price (Short Buildup)					
Symbol	Prev OI	Curr OI	OI Chg (%)	Curr Pr.	Pr.Chg (%)	Symbol	Prev OI	Curr OI	OI Chg (%)	Curr Pr.	Pr.Chg (%)
JETAIR						MRF	3301	3941	19.4	55610.0	5 [1.7]
WAYS	4857	5928	22.1	481.05	3.3	COALIN					
APOLLO						DIA	10015	11631	16.1	289.8	[1.2]
TYRE	4666	5336	14.4	199.95	1.8	INFRATE					
DABUR	4943	5590	13.1	279	1.1	L	6128	6562	7.1	309.1	[0.6]
TORNTPT						LUPIN	19592	20842	6.4	1458	[0.0]
HARM	546	617	13	1459.9	6.2	M&M	7337	7788	6.2	1305.7	[1.6]
AXISBA											
NK	22321	25032	12.2	515.4	0						

Nifty gained by 0.07% with Nifty future shaded 8.8 lakh shares in open interest and stock future added 228.2 Lakh shares in open interest.

- Nifty PCR increased to 1.13 from 1.09
- Total Nifty Calls shaded 1.3 lakh shares in open interest.
- Total Nifty Puts added 30.9 lakh shares in open interest.
- Maximum open interest (Nifty) in Calls for Jan series is at 9200 and 8800 put.
- FII's bought net Rs.1532.39 Cr(provisional), while DIIs sold net Rs.711.5 Cr in cash market.
- FII bought net Rs.280.37 Cr in F&O
- Securities in Ban Period: BHARATFIN, CENTURYTEX, JETAIRWAYS, JPASSOCIAT, RELCAPITAL, SINTEX & WOCKPHARMA

Nifty Tracker

PARTICULARS	17/03/2017	16/03/2017	15/03/2017	14/03/2017
Spot	9160.05	9153.7	9084.8	9087
% Change in Spot	0.07%	0.76%	-0.02%	1.71%
Nifty(FUT) Mar	9171.75	9176.15	9109.3	9103
Nifty(FUT) Mar Vol.	111152	99303	73550	190327
Nifty(FUT) Mar - OI	24889275	26046375	25283175	25192800
Nifty(FUT) Apr	9200.05	9201.55	9138.35	9127.4
Nifty(FUT) Apr Vol.	6846	6016	6066	11864
Nifty(FUT) Apr - OI	4497600	4244850	4029675	3884850

Trade Statistics for 17/03/2017

PARTICULARS	NO. OF CONTRACTS	TURNOVER (RS. CR.)	PUT CALL RATIO
NSE Index Futures	1,80,072	13297	-
NSE Stock Futures	6,52,400	48406	-
NSE Index Options	27,92,366	2,09,714.60	-
NSE Stock Options	4,08,904	30869	0.46
NSE F&O Total Turnover	40,33,742	302,287	0.89
NSE Cash Turnover	-	31,802.67	-
BSE Cash Turnover	-	4,594.86	-
Total Turnover	-	338685	-

FII Corner (F&O)

FII NET BUYING/SELLING & CHANGE IN OPEN INTEREST (Cr. Rupee)						
PARTICULARS	17/03/2017		16/03/2017		15/03/2017	
	Net Buying /Selling	Change In Open interest	Net Buying /Selling	Change In Open interest	Net Buying /Selling	Change In Open interest
Index Future	-137	-122	858	1225	-237	62
Index option	834	1728	1484	1096	1025	1024
Stock Future	-425	147	-166	1490	-379	1024
Stock option	8	517	-178	308	-94	200
Total	280	2269	1998	4119	315	2310

Market Open Interest

ADDITION/REDUCTION IN MARKET OPEN INTEREST					
Contracts	17/03/2017	16/03/2017	15/03/2017	14/03/2017	10/03/2017
Index Futures	-1001	1061	280	2931	699
Index Options	-232	2013	1205	2684	160
Stock Futures	-21824	17171	5330	2281	-17353
Stock Options	2078	785	213	672	1072
F&O Total	-20979	21030	7028.2	8567.2	-15421.87

Nifty Option Open Interest Statistics

NIFTY OPTIONS HIGHEST ADDITION IN OPEN INTEREST						
Expiry	Strike	Option Type	Settlement Price	Volume	Open Interest	Change In OI
30-Mar-17	9100	PE	41.85	175782	4760625	666075
30-Mar-17	9200	PE	80.55	146547	2122200	638625
30-Mar-17	9000	PE	21.2	154832	5408400	581175
30-Mar-17	8900	PE	10.8	100810	5667375	508875
30-Mar-17	9200	CE	52.95	219632	5763225	352275
30-Mar-17	9250	CE	33.4	20483	622200	264300
30-Mar-17	9300	CE	20.15	158366	4394325	248475
27-Apr-17	9000	PE	69	9930	1598325	189375
30-Mar-17	9400	CE	6.4	97158	2837925	143250
30-Mar-17	9150	PE	58.4	17682	413775	140700

NIFTY OPTIONS HIGHEST REDUCTION IN OPEN INTEREST						
Expiry	Strike	Option Type	Settlement Price	Volume	Open Interest	Change In OI
30-Mar-17	9500	CE	2.45	60981	3417450	-795675
30-Mar-17	9100	CE	111.5	110184	3108900	-338925
30-Mar-17	9000	CE	189.1	23592	2562075	-272325
28-Dec-17	8600	PE	170	1760	410900	-132000
30-Mar-17	8500	PE	2.2	15478	2950200	-87450
30-Mar-17	10000	PE	818.05	1553	1128300	-75825
30-Mar-17	8400	PE	1.8	7957	2665050	-67275
30-Mar-17	8200	PE	1.3	3743	1660200	-59025
30-Mar-17	8800	CE	374.35	2347	901425	-57900
30-Mar-17	8200	CE	966.5	827	753900	-57000

Stock Option Open Interest Statistics

STOCK OPTIONS WITH HIGHEST ADDITION IN OPEN INTEREST							
Symbol	Expiry	Strike	Option Type	Settl. Price	Volume	Open Interest	Change in OI
ICICIBANK	30-Mar-17	310	CE	0.3	2681	5395000	3377500
GMRINFRA	30-Mar-17	20	CE	0.1	199	17460000	2520000
IDEA	30-Mar-17	125	CE	0.75	869	8722000	2254000
ICICIBANK	30-Mar-17	290	CE	2.75	3580	6995000	2240000
ITC	30-Mar-17	270	PE	1.2	3292	2503200	2104800
ITC	30-Mar-17	290	CE	2.4	6209	2426400	1824000
ITC	30-Mar-17	300	CE	1.05	4478	2155200	1600800
IDEA	30-Mar-17	110	CE	3.8	947	5194000	1582000
SINTEX	30-Mar-17	105	CE	1.7	756	3263250	1524750
IDEA	30-Mar-17	120	CE	1.4	2128	11984000	1435000

STOCK OPTIONS WITH HIGHEST REDUCTION IN OPEN INTEREST							
Symbol	Expiry	Strike	Option Type	Settl. Price	Volume	Open Int.	Change in OI
JPASSOCIAT	30-Mar-17	17.5	CE	0.05	32	23732000	-1564000
JPASSOCIAT	30-Mar-17	20	CE	0.05	31	17204000	-1496000
ITC	30-Mar-17	255	PE	0.25	582	297600	-1084800
ITC	30-Mar-17	270	CE	12.9	1297	878400	-864000
HDIL	30-Mar-17	67.5	PE	0.3	213	1056000	-792000
SYNDIBANK	30-Mar-17	77.5	CE	0.15	176	135000	-747000
GMRINFRA	30-Mar-17	15	CE	1.9	50	3150000	-720000
RCOM	30-Mar-17	35	CE	3.5	73	2784000	-696000
JPASSOCIAT	30-Mar-17	15	PE	1.3	23	8364000	-680000
ICICIBANK	30-Mar-17	280	PE	4.85	2185	3580000	-652500

Research Team

Name	Designation	Email ID	Contact No.
Paras Bothra	President Equity Research	paras@ashikagroup.com	+91 22 6611 1704
Krishna Kumar Agarwal	Equity Research Analyst	krishna.a@ashikagroup.com	+91 33 4036 0646
Partha Mazumder	Equity Research Analyst	partha.m@ashikagroup.com	+91 33 4036 0647
Arijit Malakar	Equity Research Analyst	amalakar@ashikagroup.com	+91 33 4036 0644
Kapil Jagasia, CFA	Equity Research Analyst	kapil.j@ashikagroup.com	+91 22 6611 1715
Tirthankar Das	Technical & Derivative Analyst	tirthankar.d@ashikagroup.com	+91 33 4036 0645

SEBI Registration No. INH000000206

Disclosure

The Research Analysts and /or Ashika Stock Broking Limited do hereby certify that all the views expressed in this research report accurately reflect their views about the subject issuer(s) or securities. Moreover, they also certify the followings:-

- The Research Analyst or Ashika Stock Broking Limited or his/its Associates or his/its relative, has any financial interest in the subject company (ies) covered in this report. **Yes**
- The Research Analyst or Ashika Stock Broking Limited or his/its Associates or his/its relative, have actual/beneficial ownership of 1% or more in the subject company, at the end of the month immediately preceding the date of the publication of the research report. **No**
- The Research Analyst or Ashika Stock Broking Limited or his/its Associates or his/its relatives has any material conflict of interest at the time of publication of the research report. **No**
- The Research Analyst or Ashika Stock Broking Limited or his/its Associates have received compensation for investment banking or merchant banking or brokerage services or for product other than for investment banking or merchant banking or brokerage services from the companies covered in this report in the past 12 months. **No**
- The Research Analyst or Ashika Stock Broking Limited or his/its Associates have managed or co managed in the previous 12 months any private or public offering of securities for the company (ies) covered in this report. **No**
- The Research Analyst or Ashika Stock Broking Limited or his/its Associates have received any compensation or other benefits from the company (ies) covered in this report or any third party in connection with the Research Report. **No**
- The Research Analyst has served as an officer, director or employee of the company (ies) covered in the research report. **No**
- The Research Analyst or Ashika Stock Broking Limited has been engaged in Market making activity of the company (ies) covered in the research report. **No**

Disclaimer

This report is for the personal information of the authorized recipient and does not construe to be any investment, legal or taxation advice to you. Ashika Stock Broking Ltd. is not soliciting any action based upon it. This report is not for public distribution and has been furnished to you solely for your information and should not be reproduced or redistributed to any other person in any form. The report is based upon information that we consider reliable, but we do not represent that it is accurate or complete, and it should not be relied upon such. Ashika Stock Broking Ltd. or any of its affiliates or employees shall not be in anyway responsible for any loss or damage that may arise to any person from any inadvertent error in the information contained in this report. Ashika Stock Broking Ltd., or any of its affiliates or employees do not provide, at any time, any express or implied warranty of any kind, regarding any matter pertaining to this report, including without limitation the implied warranties of merchantability, fitness for a particular purpose, and non-infringement. The recipients of this report should rely on their own investigations.