

Technical Report

Closing Brief

The index commenced the penultimate week of 2016 on a negative note staging a gap down opening that was in line with weak global cues. The last half hour of trade witnessed a breach of the constricted range and the benchmark index ended lower at 8104.35 down by 0.43% for the day.

Technical Build up

- ❖ Bearish candle with decrease in volume
- ❖ Sell crossover in oscillators.
- ❖ Lower band of Bollinger exist at 7986
- ❖ Crucial moving average of 20/50 SMA are at 8137 and 8357
- ❖ 200 SMA trend deciding level exist at 8218

Outlook for the day

Indian Equity market inched further lower in a dull session on Monday, mirroring the last session's move. Banking & financials, auto and select healthcare stocks drove the market lower but ICICI Bank, Reliance Industries and ITC arrested the fall. On the technical front, bearish candle with successive lower lows indicates the index to continue its gyration within the confined range of 8100-8300. Momentum indicator RSI is also trading near neutral zone (RSI at 45) favouring consolidation. Only a sustained breach outside 8120-8260 could see directional momentum towards 8050-7950 on the lower end or 8350-8400 on the higher end. Index closed below its major moving averages and the Index continues to look weak and could test lower levels of 8050-8060 and below that at 8000 where the immediate support is placed. The resistance now comes in at 8140-8150 and above that at 8180-8200 for the next couple of trading sessions. On the option front data shows incremental Option activity in strikes of 8100-8300 of Call & Put. Option indicative band stays at 8000-8300.

Technical & Derivative Report

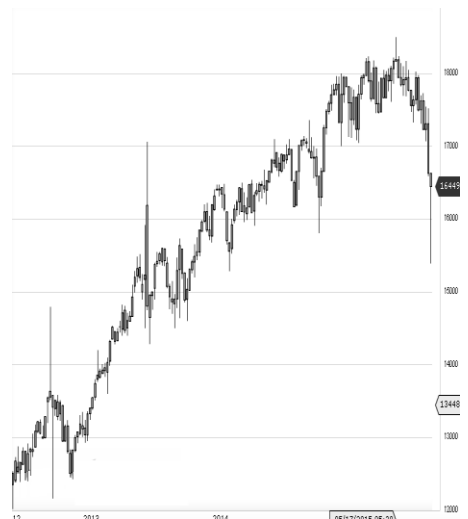
World Indices	LTP	Daily Ch(Pts)	Daily Ch(%)
Dow Jones	19883	39	0.20
Nasdaq	5457	20	0.37
S&P 500	2262	4	0.20
FTSE 100	7017	5	0.08
DAX	11426	22	0.20
Hang Seng	21811	-21	-0.10
Nikkei	19388	-2	-0.01
Sensex	26374	-114	-0.43
Nifty	8104	-35	-0.43

Commodity /Forex	LTP	Daily Ch(Pts)	Daily Ch(%)
Gold (\$/Oz)	1139.90	-2.80	-0.25
Silver (\$/Oz)	16.06	-0.03	-0.21
Copper(USD/lb.)	249.55	-0.40	-0.16
Brent Crude(USD/bbl)	54.91	-0.01	-0.02
USD/INR	67.87	0.10	0.15
USD/YEN	117.22	0.13	0.11
USD/EUR	1.0414	0.0012	0.12

Support/Resistance levels for Indian Equity Indices					
	S1	S2	CMP	R1	R2
Sensex	26190	26030	26374	26495	26625
Nifty	8050	8000	8104	8140	8180
Nifty (Fut)	8070	8020	8124	8160	8200

Pivot Level	
Sensex	26445
Nifty	8110

US: US market closed higher Monday in low volume trade as traders bought some recently less-favored sectors, while some top postelection plays lagged. Technically DJIA is presently trading at the 5th leg through Elliot wave count with negative divergence in oscillators.



Increase in OI with Increase in Price (Long Buildup)						Increase in OI with Decrease in Price (Short Buildup)					
Symbol	Prev OI	Curr OI	OI Chg (%)	Curr Pr.	Pr.Chg (%)	Symbol	Prev OI	Curr OI	OI Chg (%)	Curr Pr.	Pr.Chg (%)
ENGINE						UNIONB					
RSIN	1544	1789	15.9	315.9	3.2	ANK	3878	4442	14.5	133	[3.0]
ASHOKL						BHARAT					
EY	7486	8075	7.9	79	1.5	FIN	9651	10585	9.7	603.5	[5.9]
OIL	684	734	7.3	443.55	0.9	ASIANP					
KSCL	1716	1806	5.2	406.5	2.7	AINT	8342	8853	6.1	881.8	[2.2]
TVSMO						L&TFH	2955	3121	5.6	84.75	[1.6]
TOR	3609	3791	5	372.5	0.3	BEL	3364	3546	5.4	1444.95	[0.4]

Nifty declined by 0.43% with Nifty future shaded 0.3 lakh shares in open interest and stock future added 358.4 Lakh shares in open interest.

- Nifty PCR decreased to 1.00 from 1.03
- Total Nifty Calls added 19.0 lakh shares in open interest.
- Total Nifty Puts shaded 2.5 lakh shares in open interest.
- Maximum open interest (Nifty) in Calls for Dec series is at 8300 and 8000 put.
- FII's sold net Rs.535.77 Cr(provisional), while DIIs bought net Rs.556.36 Cr in cash market.
- FII sold net Rs.243.64Cr in F&O
- Securities in Ban Period: IBREALEST , JINDALSTEL & ORIENTBANK

Nifty Tracker

PARTICULARS	19/12/2016	16/12/2016	15/12/2016	14/12/2016
Spot	8104.35	8139.45	8153.6	8182.45
% Change in Spot	-0.43%	-0.17%	-0.35%	-0.48%
Nifty(FUT) Dec	8124.15	8146.5	8173.05	8197.65
Nifty(FUT) Dec Vol.	63952	107524	188405	100519
Nifty(FUT) Dec - OI	14570625	14874900	15584400	16581150
Nifty(FUT) Jan	8159.55	8181.7	8207.95	8231.6
Nifty(FUT) Jan Vol.	6828	7255	9444	5476
Nifty(FUT) Jan - OI	2390100	2141025	1904925	1773375

Trade Statistics for 19/12/2016

PARTICULARS	NO. OF CONTRACTS	TURNOVER (RS. CR.)	PUT CALL RATIO
NSE Index Futures	1,16,850	7675	-
NSE Stock Futures	3,43,932	22660	-
NSE Index Options	24,49,720	1,61,570.82	-
NSE Stock Options	2,40,656	16577	0.52
NSE F&O Total Turnover	31,51,158	208,483	0.88
NSE Cash Turnover	-	13,299.21	-
BSE Cash Turnover	-	2,422.75	-
Total Turnover	-	224205	-

FII Corner (F&O)

FII NET BUYING/SELLING & CHANGE IN OPEN INTEREST (Cr. Rupee)						
PARTICULARS	19/12/2016		16/12/2016		15/12/2016	
	Net Buying /Selling	Change In Open interest	Net Buying /Selling	Change In Open interest	Net Buying /Selling	Change In Open interest
Index Future	327	-145	-504	-1064	-1520	-1484
Index option	115	842	43	1298	910	1323
Stock Future	-663	-321	-149	-265	-264	-32
Stock option	-23	-7	-62	122	-38	121
Total	-244	369	-672	91	-912	-72

Market Open Interest

ADDITION/REDUCTION IN MARKET OPEN INTEREST					
Contracts	19/12/2016	16/12/2016	15/12/2016	14/12/2016	13/12/2016
Index Futures	65	-336	-804	-188	439
Index Options	288	-278	692	-313	485
Stock Futures	3987	-21039	18741	7273	2413
Stock Options	772	730	956	616	619
F&O Total	5112	-20923	19584.88	7388.42	3955.97

Nifty Option Open Interest Statistics

NIFTY OPTIONS HIGHEST ADDITION IN OPEN INTEREST						
Expiry	Strike	Option Type	Settlement Price	Volume	Open Interest	Change In OI
29-Dec-16	8150	CE	50.8	21214	1002600	687225
29-Dec-16	8100	CE	78.6	97740	2652225	413325
29-Dec-16	8100	PE	57.1	154098	4613775	398700
29-Dec-16	8300	CE	11.4	143746	6125475	296175
25-Jan-17	8500	CE	25	14524	1992750	243525
25-Jan-17	8400	CE	44.15	10451	1612350	214650
25-Jan-17	8000	PE	85.7	8502	1914600	158700
29-Dec-16	8200	CE	32.75	157622	5087100	156225
25-Jan-17	7800	CE	402.2	2406	165600	145125
25-Jan-17	7800	PE	43.25	7562	1184025	125775

NIFTY OPTIONS HIGHEST REDUCTION IN OPEN INTEREST						
Expiry	Strike	Option Type	Settlement Price	Volume	Open Interest	Change In OI
29-Dec-16	8200	PE	108.25	73747	3258300	-449475
29-Dec-16	8600	CE	1.4	24412	2204700	-269475
29-Dec-16	7000	PE	1.1	5804	1783925	-206850
29-Dec-16	8000	PE	29.35	120575	7396775	-161025
29-Dec-16	7900	PE	14.4	88228	3692175	-157875
29-Dec-16	8700	CE	0.95	11095	1592675	-154200
29-Dec-16	8800	CE	0.85	5209	1151850	-153975
29-Dec-16	7600	PE	2.85	27372	2340225	-118800
29-Dec-16	7800	PE	7.6	62365	3141150	-116175
29-Dec-16	8400	PE	279.55	4117	1004850	-102450

Stock Option Open Interest Statistics

STOCK OPTIONS WITH HIGHEST ADDITION IN OPEN INTEREST							
Symbol	Expiry	Strike	Option Type	Settl. Price	Volume	Open Interest	Change in OI
NHPC	29-Dec-16	30	CE	0.05	133	7776000	1107000
IFCI	29-Dec-16	30	CE	0.35	1264	15180000	726000
DLF	29-Dec-16	115	CE	1.55	563	3965000	580000
IFCI	29-Dec-16	32.5	CE	0.15	176	5786000	572000
BHEL	29-Dec-16	125	CE	1.35	344	1750000	490000
PNB	29-Dec-16	150	CE	0.1	129	4844000	490000
RECLTD	25-Jan-17	130	CE	4.45	92	660000	486000
ADANIPOWER	29-Dec-16	35	CE	0.2	204	7920000	480000
CROMPGREAV	29-Dec-16	60	CE	1.1	167	2076000	480000
GMRINFRA	29-Dec-16	12.5	CE	0.15	168	12105000	450000

STOCK OPTIONS WITH HIGHEST REDUCTION IN OPEN INTEREST							
Symbol	Expiry	Strike	Option Type	Settl. Price	Volume	Open Int.	Change in OI
RECLTD	29-Dec-16	140	PE	11.3	178	474000	-960000
IFCI	29-Dec-16	30	PE	2.35	49	858000	-528000
HDIL	29-Dec-16	60	PE	1.75	181	1032000	-456000
PNB	29-Dec-16	140	CE	0.25	494	6545000	-448000
PNB	29-Dec-16	130	PE	6.4	172	1386000	-378000
ADANIENT	29-Dec-16	75	CE	0.9	376	1648000	-368000
IBREALEST	29-Dec-16	85	CE	0.15	35	550000	-300000
VEDL	29-Dec-16	230	PE	6.3	665	1824000	-270000
IDFCBANK	29-Dec-16	75	CE	0.05	38	1336000	-264000
IBREALEST	29-Dec-16	75	CE	0.75	41	2280000	-260000

Name	Designation	Email ID	Contact No.
Paras Bothra	President Equity Research	paras@ashikagroup.com	+91 22 6611 1704
Krishna Kumar Agarwal	Equity Research Analyst	krishna.a@ashikagroup.com	+91 33 4036 0646
Partha Mazumder	Equity Research Analyst	partha.m@ashikagroup.com	+91 33 4036 0647
Arijit Malakar	Equity Research Analyst	amalakar@ashikagroup.com	+91 33 4036 0644
Chanchal Bachhawat	Equity Research Analyst	chanchal.bachhawat@ashikagroup.com	+91 22 6611 1712
Tirthankar Das	Technical & Derivative Analyst	tirthankar.d@ashikagroup.com	+91 33 4036 0645

SEBI Registration No. INH000000206

Disclosure

The Research Analysts and /or Ashika Stock Broking Limited do hereby certify that all the views expressed in this research report accurately reflect their views about the subject issuer(s) or securities. Moreover, they also certify the followings:-

- The Research Analyst or Ashika Stock Broking Limited or his/its Associates or his/its relative, has any financial interest in the subject company (ies) covered in this report. **Yes**
- The Research Analyst or Ashika Stock Broking Limited or his/its Associates or his/its relative, have actual/beneficial ownership of 1% or more in the subject company, at the end of the month immediately preceding the date of the publication of the research report. **No**
- The Research Analyst or Ashika Stock Broking Limited or his/its Associates or his/its relatives has any material conflict of interest at the time of publication of the research report. **No**
- The Research Analyst or Ashika Stock Broking Limited or his/its Associates have received any compensation or compensation for investment banking or merchant banking or brokerage services or for product other than for investment banking or merchant banking or brokerage services from the companies covered in this report in the past 12 months. **No**
- The Research Analyst or Ashika Stock Broking Limited or his/its Associates have managed or co managed in the previous 12 months any private or public offering of securities for the company (ies) covered in this report. **No**
- The Research Analyst or Ashika Stock Broking Limited or his/its Associates have received any compensation or other benefits from the company (ies) covered in this report or any third party in connection with the Research Report. **No**
- The Research Analyst has served as an officer, director or employee of the company (ies) covered in the research report. **No**
- The Research Analyst or Ashika Stock Broking Limited has been engaged in Market making activity of the company (ies) covered in the research report. **No**

Disclaimer

This report is for the personal information of the authorized recipient and does not construe to be any investment, legal or taxation advice to you. Ashika Stock Broking Ltd. is not soliciting any action based upon it. This report is not for public distribution and has been furnished to you solely for your information and should not be reproduced or redistributed to any other person in any form. The report is based upon information that we consider reliable, but we do not represent that it is accurate or complete, and it should not be relied upon such. Ashika Stock Broking Ltd. or any of its affiliates or employees shall not be in anyway responsible for any loss or damage that may arise to any person from any inadvertent error in the information contained in this report. Ashika Stock Broking Ltd. or any of its affiliates or employees do not provide at any time, any express or implied