

Technical Report

Closing Brief

Nifty took a breather yesterday as the index was seen face resistance at 9670-9676 levels clocking a higher high but could not manage to sustain. It was a swift descend from there on and the index clocked an intraday low of 9643.75. The benchmark index ended on a flat note at 9653.50, down 4 points.

Technical Build up

- ❖ Doji candle with increase in volume
- ❖ Buy crossover in oscillators.
- ❖ Upper band of Bollinger exist at 9746
- ❖ Crucial moving average of 20/50 SMA are at 9609 and 9427
- ❖ 200 SMA trend deciding level exist at 8802

Outlook for the day

Indian Equity market moved in a narrow range with the Nifty ending flat above 9650 as investors turned cautious apprehending early glitches in GST rollout amid mixed global cues. Consequently, FIIs remains sellers in the market while active DIIs are keeping the overall environment positive. On the technical front, failed to surpass immediate hurdle of 9680 and traded in a smaller range candle on the daily chart. Though Nifty continues to trade above its short term moving averages such as 5-days exponential moving average (DEMA), 10-DEMA, and 20-DEMA which is a bullish sign. Going forward, the Index now has support placed at 9590 and resistance comes in at 9700 above which higher levels of 9750-9775 open up. On the option front maximum Put OI is at 9500 and 9600 strike while maximum Call OI is at 9700 and 9800 Strike.

Technical & Derivative Report

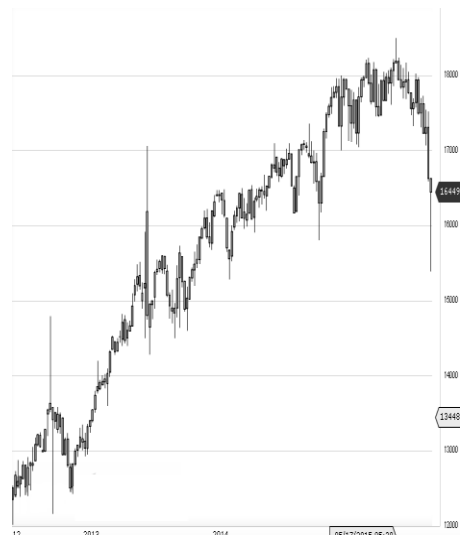
World Indices	LTP	Daily Ch(Pts)	Daily Ch(%)
Dow Jones	21467	-61	-0.29
Nasdaq	6188	-50	-0.82
S&P 500	2437	-16	-0.67
FTSE 100	7472	-51	-0.68
DAX	12814	-74	-0.58
Hang Seng	25656	-186	-0.72
Nikkei	20193	-36	-0.18
Sensex	31297	-14	-0.04
Nifty	9653	-4	-0.04

Commodity /Forex	LTP	Daily Ch(Pts)	Daily Ch(%)
Gold (\$/Oz)	1246.50	3.00	0.24
Silver (\$/Oz)	16.46	0.04	0.26
Copper(USD/lb.)	257.10	-0.10	-0.04
Brent Crude(USD/bbl)	45.99	-0.03	-0.07
USD/INR	64.50	0.07	0.12
USD/YEN	111.37	-0.08	-0.07
USD/EUR	1.1135	0.0001	0.01

Support/Resistance levels for Indian Equity Indices					
	S1	S2	CMP	R1	R2
Sensex	31200	31080	31297	31370	31455
Nifty	9625	9590	9653	9675	9700
Nifty (Fut)	9645	9610	9674	9695	9720

Pivot Level	
Sensex	31317
Nifty	9657

US: US market closed lower Tuesday, pulling back from record highs, as oil prices pressured energy stocks. Technically DJIA is presently trading at the 5th leg through Elliot wave count with negative divergence in oscillators.



Increase in OI with Increase in Price (Long Buildup)

Symbol	Prev OI	Curr OI	OI Chg (%)	Curr Pr.	Pr.Chg (%)
NIITTECH	742500	960000	29.3	577.95	0.9
HEXAWARE	3312000	4101000	23.8	255.4	3.2
CHOLAFIN	422500	511500	21.1	1136	3.8
GODREJCP	872800	1008800	15.6	1933.05	2.9
UJJIWAN	5994000	6727200	12.2	330.65	2.5

Increase in OI with Decrease in Price (Short Buildup)

Symbol	Prev OI	Curr OI	OI Chg (%)	Curr Pr.	Pr.Chg (%)
EICHERMOT	135275	157000	16.1	27919	[2.1]
ICICIBANK	1.06E+08	1.17E+08	10.9	292.8	[8.2]
NATIONALALUM	5048000	5408000	7.1	63.2	[2.0]
	1129680	1204800			
BPCL	0	0	6.7	668.4	[0.2]
	4078400	4342400			
IDBI	0	0	6.5	56.2	[1.8]

Nifty declined by 0.04% with Nifty future added 0.4 lakh shares in open interest and stock future added 528.7 Lakh shares in open interest.

- Nifty PCR remained unchanged at 1.21
- Total Nifty Calls added 5.3 lakh shares in open interest.
- Total Nifty Puts added 1.6 lakh shares in open interest.
- Maximum open interest (Nifty) in Calls for May series is at 9700 and 9600 put.
- FII's sold net Rs. 312.84 Cr(provisional), while DIIs bought net Rs.477.13 Cr in cash market.
- FII bought net Rs.163.38 Cr in F&O
- Securities in Ban Period: ALBK, BANKINDIA, BEML, DLF, HDIL, IBREALEST, IFCI, INFIBEAM, JPASSOCIAT, KSCL, ORIENTBANK, RCOM & WOCKPHARMA

Nifty Tracker

PARTICULARS	20/06/2017	19/06/2017	16/06/2017	15/06/2017
Spot	9653.5	9657.55	9588.05	9578.05
% Change in Spot	-0.04%	0.72%	0.10%	-0.42%
Nifty(FUT) June	9674.45	9675.25	9597.25	9600.9
Nifty(FUT) June Vol.	47126	95051	78625	80763
Nifty(FUT) June - OI	21072225	21115650	21211125	21589050
Nifty(FUT) July	9692.4	9694.7	9616.75	9620.55
Nifty(FUT) July Vol.	3757	5558	3947	3334
Nifty(FUT) July - OI	1889400	1834275	1682775	1615425

Trade Statistics for 20/06/2017

PARTICULARS	NO. OF CONTRACTS	TURNOVER (RS. CR.)	PUT CALL RATIO
NSE Index Futures	94177	7751	-
NSE Stock Futures	5,39,730	38911	-
NSE Index Options	30,65,649	2,59,813.28	-
NSE Stock Options	3,80,443	28189	0.41
NSE F&O Total Turnover	40,79,999	334,665	0.98
NSE Cash Turnover	-	22,111.75	-
BSE Cash Turnover	-	3031.9	-
Total Turnover	-	359808	-

FII Corner (F&O)

FII NET BUYING/SELLING & CHANGE IN OPEN INTEREST (Cr. Rupee)						
PARTICULARS	20/06/2017		19/06/2017		16/06/2017	
	Net Buying /Selling	Change In Open interest	Net Buying /Selling	Change In Open interest	Net Buying /Selling	Change In Open interest
Index Future	321	134	145	-112	-276	-657
Index option	344	1005	733	251	111	1754
Stock Future	-480	757	-937	806	-500	37
Stock option	-21	164	114	195	22	140
Total	164	2060	55	1140	-643	1274

Market Open Interest

ADDITION/REDUCTION IN MARKET OPEN INTEREST					
Contracts	20/06/2017	19/06/2017	16/06/2017	15/06/2017	14/06/2017
Index Futures	42	155	-539	98	-441
Index Options	1094	1735	464	850	944
Stock Futures	5121	1943	-23838	19013	6169
Stock Options	536	489	539	5004	-3610
F&O Total	6793	4322	-23374.94	24965.31	3062.37

Nifty Option Open Interest Statistics

NIFTY OPTIONS HIGHEST ADDITION IN OPEN INTEREST						
Expiry	Strike	Option Type	Settlement Price	Volume	Open Interest	Change In OI
29-Jun-17	9700	PE	66.25	115463	3107475	397050
27-Jul-17	9600	PE	78.75	15042	1510500	390675
29-Jun-17	9750	CE	23.3	37826	1258350	338925
29-Jun-17	9200	PE	2.4	22281	2722900	271350
29-Jun-17	9650	PE	42.9	29948	1204050	145500
31-Aug-17	9800	PE	193.45	2406	139125	137100
31-Aug-17	9700	PE	147.15	2473	200025	132375
29-Jun-17	9700	CE	42.5	195911	6673350	95475
27-Jul-17	9300	PE	23.9	7539	1407975	91500
29-Jun-17	9900	CE	3.8	49549	2956650	79575

NIFTY OPTIONS HIGHEST REDUCTION IN OPEN INTEREST						
Expiry	Strike	Option Type	Settlement Price	Volume	Open Interest	Change In OI
29-Jun-17	9500	PE	12.85	117601	5648175	-664050
29-Jun-17	9400	PE	6.55	61175	4539225	-464700
29-Jun-17	9600	PE	28.7	138617	5969100	-322575
27-Jul-17	9700	PE	117.05	10716	570150	-144975
29-Jun-17	9500	CE	183.4	9946	1885200	-114600
29-Jun-17	9600	CE	102.05	75677	3585525	-108750
29-Jun-17	9800	CE	12.9	134645	4513200	-102975
29-Jun-17	10000	CE	1.5	52564	3053325	-102225
29-Jun-17	10000	PE	320.5	2059	786900	-87225
29-Jun-17	9100	PE	1.8	16346	1496550	-55725

Stock Option Open Interest Statistics

STOCK OPTIONS WITH HIGHEST ADDITION IN OPEN INTEREST							
Symbol	Expiry	Strike	Option Type	Settl. Price	Volume	Open Interest	Change in OI
SUZLON	27-Jul-17	20	CE	0.65	97	3210000	1830000
GMRINFRA	29-Jun-17	20	PE	0.6	170	6705000	1800000
FEDERALBNK	29-Jun-17	110	PE	0.2	405	5137000	1342000
TATAPOWER	29-Jun-17	85	CE	0.55	570	1881000	1053000
IDEA	29-Jun-17	80	PE	1.05	833	3409000	1036000
FEDERALBNK	29-Jun-17	120	CE	2.35	344	4048000	902000
ADANIPOWER	29-Jun-17	30	CE	0.15	235	10680000	900000
APOLLOTYRE	29-Jun-17	265	CE	3.75	1133	1359000	708000
SUZLON	27-Jul-17	17.5	PE	0.45	30	1020000	660000
GMRINFRA	27-Jul-17	25	CE	0.4	19	1170000	630000

STOCK OPTIONS WITH HIGHEST REDUCTION IN OPEN INTEREST							
Symbol	Expiry	Strike	Option Type	Settl. Price	Volume	Open Int.	Change in OI
SUZLON	29-Jun-17	20	CE	0.15	1065	33900000	-2940000
JPASSOCIAT	29-Jun-17	15	CE	0.65	34	19312000	-1632000
GMRINFRA	29-Jun-17	20	CE	0.75	1661	26910000	-1260000
VEDL	29-Jun-17	240	CE	5.85	1580	2520000	-1193500
GMRINFRA	29-Jun-17	17.5	CE	2.7	105	9090000	-900000
GMRINFRA	29-Jun-17	17.5	PE	0.1	93	11745000	-900000
TATAMOTORS	29-Jun-17	460	CE	12.4	3463	1027500	-685500
JPASSOCIAT	29-Jun-17	12.5	PE	0.1	12	7684000	-680000
ICICIBANK	29-Jun-17	290.9	CE	5.75	750	3162500	-632500
SUZLON	29-Jun-17	20	PE	1.55	26	12540000	-630000

Research Team

Name	Designation	Email ID	Contact No.
Paras Bothra	President Equity Research	paras@ashikagroup.com	+91 22 6611 1704
Krishna Kumar Agarwal	Equity Research Analyst	krishna.a@ashikagroup.com	+91 33 4036 0646
Partha Mazumder	Equity Research Analyst	partha.m@ashikagroup.com	+91 33 4036 0647
Arijit Malakar	Equity Research Analyst	amalakar@ashikagroup.com	+91 33 4036 0644
Kapil Jagasia, CFA	Equity Research Analyst	kapil.j@ashikagroup.com	+91 22 6611 1715
Tirthankar Das	Technical & Derivative Analyst	tirthankar.d@ashikagroup.com	+91 33 4036 0645

Ashika Stock Broking Limited ("ASBL") or Research Entity has started its journey in the year 1994 and is engaged in the business of broking services, depository services, distributor of financial products (Mutual fund, IPO & Bonds). This research report has been prepared and distributed by ASBL in the sole capacity of a Research Analyst (Reg No. INH00000206) of SEBI (Research Analyst) Regulations 2014. ASBL is a wholly owned subsidiary of Ashika Global Securities (P) Ltd., a RBI registered non-deposit taking NBFC Company. Ashika group (details is enumerated on our website www.ashikagroup.com) is an integrated financial service provider inter alia engaged in the business of Investment Banking, Corporate Lending, Commodity Broking, Debt Syndication & Other Advisory Services.

There were no significant and material disciplinary actions against ASBL taken by any regulatory authority during last three years.

Disclosure

ASBL or its associates, its Research Analysts (including their relatives) may have financial interest in the subject company(ies). However, the said financial interest is not limited to having an open stock market position in /acting as advisor to /having a loan transaction with the subject company(ies) apart from registration as clients.

- ASBL or its Research Analysts (including their relatives) do not have any actual / beneficial ownership of 1% or more of securities of the subject company(ies) at the end of the month immediately preceding the date of publication of this report or date of the public appearance. However ASBL's associates may have actual / beneficial ownership of 1% or more of securities of the subject company(ies).
- ASBL or their Research Analysts (including their relatives) do not have any other material conflict of interest at the time of publication of this research report or date of the public appearance. However ASBL's associates might have an actual / potential conflict of interest (other than ownership).
- ASBL or its associates may have received compensation for investment banking, merchant banking, and brokerage services and for other products and services from the subject companies during the preceding 12 months. However, ASBL or its associates or its Research analysts (forming part of Research Desk) have not received any compensation or other benefits from the subject companies or third parties in connection with the research report. Moreover, Research Analysts have not received any compensation from the companies mentioned herein in the past twelve months.
- ASBL or their Research Analysts have not managed or co-managed public offering of securities for the subject company(ies) in the past twelve months. However ASBL's associates may have managed or co-managed public offering of securities for the subject company(ies) in the past twelve months.
- Research Analysts have not served as an officer, director or employee of the companies mentioned in the report.
- Neither ASBL nor its Research Analysts have been engaged in market making activity for the companies mentioned in the report.

Disclaimer

The research recommendation and information herein are solely for the personal information of the authorized recipient and does not construe to be an offer documents or any investment, legal or taxation advice or solicitation of any action based upon it. This report is not for public distribution or use by any person or entity, where such distribution, publication, availability or use would be contrary to law, regulation or subject to any registration or licensing requirement. We will not treat recipients as customer by virtue of their receiving this report. The report is based upon the information obtained from public sources that we consider reliable, but we do not guarantee its accuracy or completeness. ASBL shall not be in anyways responsible for any loss or damage that may arise to any such person from any inadvertent error in the information contained in this report. The recipients of this report should rely on their own investigations.