

Technical Report

Closing Brief

Benchmark Indices started the day on a positive note with Nifty opening around 20 points higher. Post which, markets were seen trading with a sideways to positive bias throughout the day. Nifty finally settled the day higher by 0.62% at 9086.30 levels.

Technical Build up

- ❖ Bullish candle with increase in volume
- ❖ Sell crossover in oscillators.
- ❖ Upper band of Bollinger exist at 9173
- ❖ Crucial moving average of 20/50 SMA are at 8980 and 8738
- ❖ 200 SMA trend deciding level exist at 8508

Outlook for the day

Indian Equity market rebounded swiftly and gained over half a percent, thanks to favourable domestic cues. Continued FIIs buying, fall in oil price, favorable domestic cues have positive sentiment in the market. Government also expects that the GST will be implemented from 1st July. On the technical front, opened positive and formed a strong Bullish candle after 4 consecutive day of decline. Nifty has reverted back from the lower-end of the recent trading range i.e. previous breakout point. Hence view remains positive for Nifty and has support placed around 9050 levels followed by 9000 levels on the lower side. While on the flip side, Index is likely to find resistance around 9120 levels followed by 9170 levels. On the option front data shows unwinding by call writers at 9100-9200 strike while fresh addition by put writers at 9000-9100. 9100 Strike is acting as crucial area for bulls & bear. Immediate option band is 8900-9200.

Technical & Derivative Report

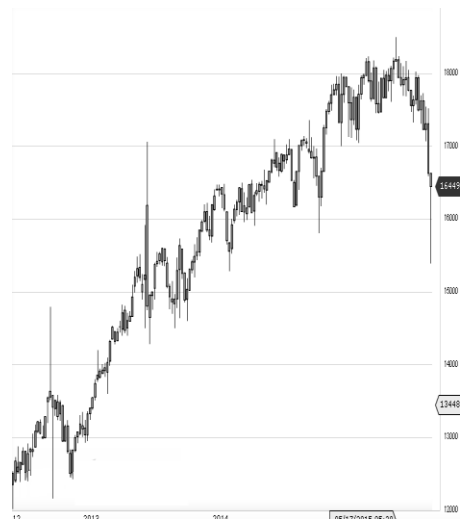
World Indices	LTP	Daily Ch(Pts)	Daily Ch(%)
Dow Jones	20656	-4	-0.02
Nasdaq	5817	-3	-0.07
S&P 500	2345	-2	-0.11
FTSE 100	7340	15	0.22
DAX	12039	135	1.14
Hang Seng	24304	-23	-0.10
Nikkei	19254	169	0.88
Sensex	29332	164	0.56
Nifty	9086	55	0.62

Commodity /Forex	LTP	Daily Ch(Pts)	Daily Ch(%)
Gold (\$/Oz)	1246.60	-3.50	-0.28
Silver (\$/Oz)	17.58	-0.01	-0.07
Copper(USD/lb.)	262.75	-1.70	-0.64
Brent Crude(USD/bbl)	50.65	0.09	0.18
USD/INR	65.53	0.08	0.14
USD/YEN	111.34	0.40	0.36
USD/EUR	1.0768	-0.0015	-0.14

Support/Resistance levels for Indian Equity Indices					
	S1	S2	CMP	R1	R2
Sensex	29130	28985	29332	29415	29580
Nifty	9025	8980	9086	9110	9160
Nifty (Fut)	9045	90000	9107	9130	9180

Pivot Level	
Sensex	29301
Nifty	9077

US: US market fell on Thursday after a key vote in the House regarding a Republican-led health care bill was delayed. Technically DJIA is presently trading at the 5th leg through Elliot wave count with negative divergence in oscillators.



Increase in OI with Increase in Price (Long Buildup)					
Symbol	Prev OI	Curr OI	OI Chg (%)	Curr Pr.	Pr.Chg (%)
BHARAT					
FIN	15389	18613	21	846	4.5
CEATLT					
D	2811	3000	6.7	1325	2.9
RELCAP					
TAL	6486	6898	6.4	612.35	3.2
ARVIND	3572	3685	3.2	391.8	1.2
YESBAN					
K	10683	10996	2.9	1519.7	3.1

Increase in OI with Decrease in Price (Short Buildup)					
Symbol	Prev OI	Curr OI	OI Chg (%)	Curr Pr.	Pr.Chg (%)
IGL	2065	2139	3.6	1004	[0.2]
TCS	25094	25550	1.8	2467.5	[0.8]

Nifty gained by 0.62% with Nifty future added 3.6 lakh shares in open interest and stock future added 345.4 Lakh shares in open interest.

- Nifty PCR increased to 1.04 from 1.00
- Total Nifty Calls shaded 9.8 lakh shares in open interest.
- Total Nifty Puts added 19.1 lakh shares in open interest.
- Maximum open interest (Nifty) in Calls for Jan series is at 9200 and 8800 put.
- FII's bought net Rs. 1094.44 Cr(provisional), while DIIs sold net Rs.590.78 Cr in cash market.
- FII bought net Rs.585.43 Cr in F&O
- Securities in Ban Period: BHARATFIN, CENTURYTEX, HDIL, IBREALEST, IFCI, JETAIRWAYS, JPASSOCIAT, JSWENERGY, ORIENTBANK, RELCAPITAL, SINTEX & WOCKPHARMA

Nifty Tracker

PARTICULARS	23/03/2017	22/03/2017	21/03/2017	20/03/2017
Spot	9086.3	9030.45	9121.5	9126.85
% Change in Spot	0.62%	-1.00%	-0.06%	-0.36%
Nifty(FUT) Mar	9107.65	9050.4	9143	9153.55
Nifty(FUT) Mar Vol.	97203	142176	100487	73494
Nifty(FUT) Mar - OI	26220675	26185950	25862850	25570875
Nifty(FUT) Apr	9135.85	9078.9	9174.8	9184.3
Nifty(FUT) Apr Vol.	10980	12796	6849	5593
Nifty(FUT) Apr - OI	5296350	4975650	4722000	4625175

Trade Statistics for 23/03/2017

PARTICULARS	NO. OF CONTRACTS	TURNOVER (RS. CR.)	PUT CALL RATIO
NSE Index Futures	1,71,844	12671	-
NSE Stock Futures	6,31,073	47672	-
NSE Index Options	77,69,334	6,20,765.17	-
NSE Stock Options	3,94,322	30591	0.42
NSE F&O Total Turnover	89,66,573	711,699	0.77
NSE Cash Turnover	-	24,331.15	-
BSE Cash Turnover	-	6477.76	-
Total Turnover	-	742508	-

FII Corner (F&O)

FII NET BUYING/SELLING & CHANGE IN OPEN INTEREST (Cr. Rupee)						
PARTICULARS	23/03/2017		22/03/2017		21/03/2017	
	Net Buying /Selling	Change In Open interest	Net Buying /Selling	Change In Open interest	Net Buying /Selling	Change In Open interest
Index Future	101	531	1053	-55	-26	89
Index option	707	950	461	1518	-576	-129
Stock Future	-232	949	-1820	-135	-2391	648
Stock option	9	138	-126	95	27	55
Total	585	2567	-432	1422	-2966	663

Market Open Interest

ADDITION/REDUCTION IN MARKET OPEN INTEREST					
Contracts	23/03/2017	22/03/2017	21/03/2017	20/03/2017	17/03/2017
Index Futures	569	66	254	720	-1001
Index Options	1988	-243	823	1389	-232
Stock Futures	10941	6786	3518	4056	-21824
Stock Options	743	1201	1103	1705	2078
F&O Total	14241	7810	5698.17	7870.45	-20979.22

Nifty Option Open Interest Statistics

NIFTY OPTIONS HIGHEST ADDITION IN OPEN INTEREST						
Expiry	Strike	Option Type	Settlement Price	Volume	Open Interest	Change In OI
30-Mar-17	9000	PE	17.9	224751	5252025	592575
30-Mar-17	9050	PE	28.6	45701	1096350	413025
30-Mar-17	9100	PE	47.4	186692	3627375	379425
30-Mar-17	8950	PE	10.3	33492	1007025	307575
30-Mar-17	8800	PE	2.85	72336	5544525	151050
27-Apr-17	8500	PE	8.65	3682	1405575	116325
27-Apr-17	9200	CE	93	17127	1495725	114750
27-Apr-17	9000	CE	205.1	7081	1070100	96975
30-Mar-17	8750	PE	1.85	6998	448200	91875
30-Mar-17	9250	CE	8.3	35050	1161300	84000

NIFTY OPTIONS HIGHEST REDUCTION IN OPEN INTEREST						
Expiry	Strike	Option Type	Settlement Price	Volume	Open Interest	Change In OI
30-Mar-17	9100	CE	55.7	270706	4563900	-435450
30-Mar-17	9000	CE	122.5	97961	2326350	-422550
30-Mar-17	9200	CE	18.2	221934	6076650	-346650
30-Mar-17	8900	PE	6.1	127291	5235750	-184650
30-Mar-17	8500	PE	1.05	13945	2496450	-155850
30-Mar-17	9150	CE	32.75	47987	1485825	-137850
30-Mar-17	9400	CE	1.15	32047	3058200	-105000
30-Mar-17	9300	CE	3.8	108216	4388250	-104250
30-Mar-17	9050	CE	85.15	21442	503625	-90225
30-Mar-17	8400	PE	0.9	3607	2154825	-77325

Stock Option Open Interest Statistics

STOCK OPTIONS WITH HIGHEST ADDITION IN OPEN INTEREST							
Symbol	Expiry	Strike	Option Type	Settl. Price	Volume	Open Interest	Change in OI
IDEA	30-Mar-17	120	CE	0.1	1546	21231000	1470000
HINDZINC	30-Mar-17	320	CE	0.65	1613	1910400	1222400
NHPC	27-Apr-17	25	PE	0.1	39	999000	999000
FEDERALBNK	30-Mar-17	82.5	PE	0.25	144	1529000	847000
HINDZINC	30-Mar-17	330	CE	0.45	806	1062400	764800
ICICIBANK	30-Mar-17	270	CE	3.25	3518	4745000	735000
RPOWER	27-Apr-17	50	CE	1.8	67	828000	732000
PFC	30-Mar-17	140	CE	1.9	517	2796000	654000
VEDL	30-Mar-17	260	PE	2.35	2389	3381000	588000
ASHOKLEY	30-Mar-17	90	CE	0.65	705	4739000	567000

STOCK OPTIONS WITH HIGHEST REDUCTION IN OPEN INTEREST							
Symbol	Expiry	Strike	Option Type	Settl. Price	Volume	Open Int.	Change in OI
IDEA	30-Mar-17	130	CE	0.05	291	12348000	-1365000
IFCI	30-Mar-17	32.5	CE	0.25	306	12254000	-1034000
VEDL	30-Mar-17	260	CE	8.45	2109	2408000	-1032500
HDIL	30-Mar-17	80	CE	0.9	188	3496000	-968000
IDEA	30-Mar-17	127.5	CE	0.05	131	1015000	-742000
VEDL	30-Mar-17	270	CE	3.7	6038	5477500	-731500
PTC	30-Mar-17	97.5	CE	0.1	187	32000	-712000
SYNDIBANK	30-Mar-17	65	PE	0.5	187	297000	-693000
DISHTV	30-Mar-17	122.5	CE	0.1	194	49000	-665000
ADANIPOWER	30-Mar-17	37.5	PE	0.3	117	3860000	-660000

Research Team

Name	Designation	Email ID	Contact No.
Paras Bothra	President Equity Research	paras@ashikagroup.com	+91 22 6611 1704
Krishna Kumar Agarwal	Equity Research Analyst	krishna.a@ashikagroup.com	+91 33 4036 0646
Partha Mazumder	Equity Research Analyst	partha.m@ashikagroup.com	+91 33 4036 0647
Arijit Malakar	Equity Research Analyst	amalakar@ashikagroup.com	+91 33 4036 0644
Kapil Jagasia, CFA	Equity Research Analyst	kapil.j@ashikagroup.com	+91 22 6611 1715
Tirthankar Das	Technical & Derivative Analyst	tirthankar.d@ashikagroup.com	+91 33 4036 0645

SEBI Registration No. INH000000206

Disclosure

The Research Analysts and /or Ashika Stock Broking Limited do hereby certify that all the views expressed in this research report accurately reflect their views about the subject issuer(s) or securities. Moreover, they also certify the followings:-

- The Research Analyst or Ashika Stock Broking Limited or his/its Associates or his/its relative, has any financial interest in the subject company (ies) covered in this report. **Yes**
- The Research Analyst or Ashika Stock Broking Limited or his/its Associates or his/its relative, have actual/beneficial ownership of 1% or more in the subject company, at the end of the month immediately preceding the date of the publication of the research report. **No**
- The Research Analyst or Ashika Stock Broking Limited or his/its Associates or his/its relatives has any material conflict of interest at the time of publication of the research report. **No**
- The Research Analyst or Ashika Stock Broking Limited or his/its Associates have received compensation for investment banking or merchant banking or brokerage services or for product other than for investment banking or merchant banking or brokerage services from the companies covered in this report in the past 12 months. **No**
- The Research Analyst or Ashika Stock Broking Limited or his/its Associates have managed or co managed in the previous 12 months any private or public offering of securities for the company (ies) covered in this report. **No**
- The Research Analyst or Ashika Stock Broking Limited or his/its Associates have received any compensation or other benefits from the company (ies) covered in this report or any third party in connection with the Research Report. **No**
- The Research Analyst has served as an officer, director or employee of the company (ies) covered in the research report. **No**
- The Research Analyst or Ashika Stock Broking Limited has been engaged in Market making activity of the company (ies) covered in the research report. **No**

Disclaimer

This report is for the personal information of the authorized recipient and does not construe to be any investment, legal or taxation advice to you. Ashika Stock Broking Ltd. is not soliciting any action based upon it. This report is not for public distribution and has been furnished to you solely for your information and should not be reproduced or redistributed to any other person in any form. The report is based upon information that we consider reliable, but we do not represent that it is accurate or complete, and it should not be relied upon such. Ashika Stock Broking Ltd. or any of its affiliates or employees shall not be in anyway responsible for any loss or damage that may arise to any person from any inadvertent error in the information contained in this report. Ashika Stock Broking Ltd., or any of its affiliates or employees do not provide, at any time, any express or implied warranty of any kind, regarding any matter pertaining to this report, including without limitation the implied warranties of merchantability, fitness for a particular purpose, and non-infringement. The recipients of this report should rely on their own investigations.