

# Technical Report

## Closing Brief

Markets closed in red amid increased volatility. Indices followed their Asian peers in opening trade following the Manchester blast and slipped towards 9374 levels and bounced from there after Europe witnessed strong recovery. However, last hour sell off amid cross border tensions between India and Pakistan ended the day on a negative note. Nifty closed at 9386.15 down by 52.10 points or 0.55 %

## Technical Build up

- ❖ Doji candle with decrease in volume
- ❖ Sell crossover in oscillators.
- ❖ Upper band of Bollinger exist at 9526
- ❖ Crucial moving average of 20/50 SMA are at 9371 and 9223
- ❖ 200 SMA trend deciding level exist at 8700

## Outlook for the day

Indian Equity market y settled half a percent down in a volatile trading session, continuing its corrective phase. The news of terror attack in Manchester, England triggered weak start, sentiment further deteriorated in reaction to the latest update by the Indian Army that it has destroyed several Pakistan Army posts in retaliation across the LOC. On the technical front, Nifty formed a Bearish candle and broken the previous week's low of 9390. index slipped below its crucial 13-DEMA with negative signal from RSI indicator, whenever index slipped below this crucial moving average it has managed to bounce back in the next few trading sessions. Hence, a bounce back cannot be ruled out as the index is trading near crucial support levels, but a close below 9370 could exert selling pressure. While on the upside immediate hurdles are seen at 9450 and 9480. On the F&O front maximum Put OI is at 9300 followed by 9400 strike while maximum Call OI is at 9500 followed by 9600 strike. Fresh Call writing at 9400 strikes which is restricting its upside momentum while Put writing in 9350 supporting the market on declines. Nifty rollover stood at 25% on Monday, lower than the three-month average of 30.2%. While Market wide rollover at 22.8% was lower than the three-month average of 24.9%.

## Technical & Derivative Report

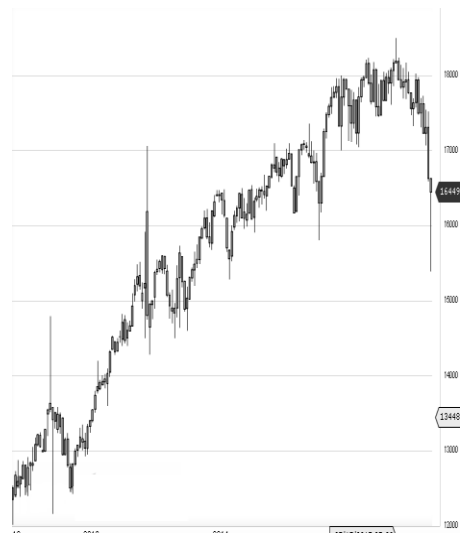
World Indices	LTP	Daily Ch(Pts)	Daily Ch(%)
Dow Jones	20937	43	0.21
Nasdaq	6138	5	0.08
S&P 500	2398	4	0.18
FTSE 100	7485	-11	-0.15
DAX	12659	39	0.31
Hang Seng	25361	-41	-0.16
Nikkei	19693	79	0.41
Sensex	30365	-205	-0.67
Nifty	9386	-52	-0.55

Commodity /Forex	LTP	Daily Ch(Pts)	Daily Ch(%)
Gold (\$/Oz)	1252.10	-3.40	-0.27
Silver (\$/Oz)	17.05	-0.09	-0.52
Copper(USD/lb.)	258.20	-1.40	-0.54
Brent			
Crude(USD/bbl)	54.28	0.13	0.24
USD/INR	64.89	0.34	0.53
USD/YEN			
	111.82	0.04	0.04
USD/EUR	1.1186	0.0003	0.03

Support/Resistance levels for Indian Equity Indices					
	S1	S2	CMP	R1	R2
Sensex	30245	30080	30365	30575	30745
Nifty	9350	9300	9386	9450	9500
Nifty (Fut)	9355	9305	9390	9455	9505

Pivot Level		
Sensex		30430
Nifty		9401

**US:** US market closed higher on Tuesday as hope around the Trump trade was renewed among investors. Technically DJIA is presently trading at the 5th leg through Elliot wave count with negative divergence in oscillators.



### Increase in OI with Increase in Price (Long Buildup)

Symbol	Prev OI	Curr OI	OI Chg (%)	Curr Pr.	Pr.Chg (%)

### Increase in OI with Decrease in Price (Short Buildup)

Symbol	Prev OI	Curr OI	OI Chg (%)	Curr Pr.	Pr.Chg (%)

Ashika Stock Broking Limited

Nifty declined by 0.55% with Nifty future added 14.2 lakh shares in open interest and stock future added 398.9 Lakh shares in open interest.

- Nifty PCR decreased to 1.11 from 1.17
- Total Nifty Calls added 21.9 lakh shares in open interest.
- Total Nifty Puts shaded 12.2 lakh shares in open interest.
- Maximum open interest (Nifty) in Calls for May series is at 9500 and 9300 put.
- FII's sold net Rs. 400.53 Cr(provisional), while DIIs bought net Rs.352.54 Cr in cash market.
- FII bought net Rs.2750.07 Cr in F&O
- Securities in Ban Period: BANKINDIA, BHARATFIN, CAPF, CEATLTD, IBREALEST, IDBI, INFIBEAM, JISJALEQS, JPASSOCIAT, ORIENTBANK, RCOM, TV18BRDCAST & UJJIVAN

## Nifty Tracker

PARTICULARS	23/05/2017	22/05/2017	19/05/2017	18/05/2017
Spot	9386.15	9438.25	9427.9	9429.45
% Change in Spot	-0.55%	0.11%	-0.02%	-1.01%
Nifty(FUT) May	9390.45	9443.65	9445.75	9440.7
Nifty(FUT) May Vol.	179973	113056	164078	134391
Nifty(FUT) May - OI	15308550	17817300	19109250	20046075
Nifty(FUT) June	9395.15	9447.25	9450.65	9441.9
Nifty(FUT) June Vol.	97790	47774	19421	12920
Nifty(FUT) June - OI	9409125	5516175	2706900	2287050

## Trade Statistics for 23/05/2017

PARTICULARS	NO. OF CONTRACTS	TURNOVER (RS. CR.)	PUT CALL RATIO
NSE Index Futures	4,05,025	31000	-
NSE Stock Futures	16,59,153	1,12,229.19	-
NSE Index Options	77,24,327	5,98,830.86	-
NSE Stock Options	7,18,829	54651	0.58
NSE F&O Total Turnover	1,05,07,334	796,711	1.07
NSE Cash Turnover	-	28,065.85	-
BSE Cash Turnover	-	4,160.66	-
Total Turnover	-	828937	-

## FII Corner (F&O)

FII NET BUYING/SELLING & CHANGE IN OPEN INTEREST (Cr. Rupee)						
PARTICULARS	23/05/2017		22/05/2017		19/05/2017	
	Net Buying /Selling	Change In Open interest	Net Buying /Selling	Change In Open interest	Net Buying /Selling	Change In Open interest
Index Future	510	-585	-79	1469	333	-566
Index option	1853	1894	-192	502	966	687
Stock Future	463	3258	152	3395	671	-559
Stock option	-76	159	-1	-91	-12	134
Total	2750	4726	-120	5274	1958	-305

## Market Open Interest

ADDITION/REDUCTION IN MARKET OPEN INTEREST					
Contracts	23/05/2017	22/05/2017	19/05/2017	18/05/2017	17/05/2017
Index Futures	2002	1586	-800	-2267	676
Index Options	2407	2375	-920	-3126	1878
Stock Futures	3005	7242	-19663	9312	7271
Stock Options	-394	281	-210	1030	215
F&O Total	7019	11484	-21592.97	4949.23	10040.81

## Nifty Option Open Interest Statistics

NIFTY OPTIONS HIGHEST ADDITION IN OPEN INTEREST						
Expiry	Strike	Option Type	Settlement Price	Volume	Open Interest	Change In OI
25-May-17	9400	CE	36.8	523135	4977000	1310925
29-Jun-17	9200	PE	63.25	36004	2260450	541275
29-Jun-17	10500	PE	1088.25	6307	562425	430650
29-Jun-17	9600	CE	37.45	45848	2301300	396900
25-May-17	9250	PE	15.15	93278	991350	365475
25-May-17	9600	CE	1.45	244829	5674800	359475
29-Jun-17	7500	CE	1873.7	5169	458400	320675
29-Jun-17	9000	PE	31.45	28190	2968950	293400
29-Jun-17	9500	CE	71.1	57170	2084475	279150
25-May-17	9350	CE	65.95	25526	510000	254475

NIFTY OPTIONS HIGHEST REDUCTION IN OPEN INTEREST						
Expiry	Strike	Option Type	Settlement Price	Volume	Open Interest	Change In OI
25-May-17	9400	PE	49.85	657963	4646025	-1134600
25-May-17	9300	PE	22.15	521155	5426550	-1030875
25-May-17	9500	PE	112.15	170469	1476600	-873900
25-May-17	9450	PE	77	82137	638475	-798525
25-May-17	10500	PE	1102.7	6379	255900	-372225
25-May-17	9700	CE	0.65	68444	1922325	-300000
25-May-17	7500	CE	1881.95	4226	624750	-294600
25-May-17	9650	CE	0.8	46890	1222350	-281400
25-May-17	9550	CE	2.9	136773	1890600	-248100
25-May-17	8000	CE	1385.65	3963	825750	-245325

## Stock Option Open Interest Statistics

STOCK OPTIONS WITH HIGHEST ADDITION IN OPEN INTEREST							
Symbol	Expiry	Strike	Option Type	Settl. Price	Volume	Open Interest	Change in OI
DLF	25-May-17	185	PE	0.35	2786	5695000	4315000
DLF	25-May-17	195	PE	3	2654	3790000	2405000
PNB	25-May-17	140	PE	0.45	1816	3006500	2261000
SUZLON	29-Jun-17	20	CE	1.1	282	11610000	2130000
ADANIPOWER	25-May-17	30	CE	0.35	392	3460000	1900000
RCOM	29-Jun-17	27.5	CE	1.9	198	1824000	1824000
GMRINFRA	29-Jun-17	15	PE	0.5	60	3375000	1710000
SUZLON	29-Jun-17	22.5	CE	0.55	382	10710000	1710000
RCOM	25-May-17	25	PE	0.05	212	1944000	1356000
SBIN	25-May-17	295	CE	1.55	6417	3153000	1317000

STOCK OPTIONS WITH HIGHEST REDUCTION IN OPEN INTEREST							
Symbol	Expiry	Strike	Option Type	Settl. Price	Volume	Open Int.	Change in OI
SUZLON	25-May-17	22.5	CE	0.05	928	48330000	-5580000
RCOM	25-May-17	27.5	PE	0.3	591	2004000	-2340000
SBIN	25-May-17	310	CE	0.25	7710	7488000	-2259000
GMRINFRA	25-May-17	17.5	CE	0.05	124	18945000	-1845000
PNB	25-May-17	145	PE	1	3465	2173500	-1813000
JPASSOCIAT	25-May-17	10	PE	0.15	52	6664000	-1564000
GMRINFRA	25-May-17	17.5	PE	1.85	45	7155000	-1440000
SAIL	25-May-17	65	CE	0.05	348	5460000	-1344000
JPASSOCIAT	25-May-17	12.5	CE	0.05	26	5168000	-1292000
SUZLON	25-May-17	20	PE	0.45	363	15240000	-1290000

## Research Team

Name	Designation	Email ID	Contact No.
Paras Bothra	President Equity Research	paras@ashikagroup.com	+91 22 6611 1704
Krishna Kumar Agarwal	Equity Research Analyst	krishna.a@ashikagroup.com	+91 33 4036 0646
Partha Mazumder	Equity Research Analyst	partha.m@ashikagroup.com	+91 33 4036 0647
Arijit Malakar	Equity Research Analyst	amalakar@ashikagroup.com	+91 33 4036 0644
Kapil Jagasia, CFA	Equity Research Analyst	kapil.j@ashikagroup.com	+91 22 6611 1715
Tirthankar Das	Technical & Derivative Analyst	tirthankar.d@ashikagroup.com	+91 33 4036 0645

Ashika Stock Broking Limited ("ASBL") or Research Entity has started its journey in the year 1994 and is engaged in the business of broking services, depository services, distributor of financial products (Mutual fund, IPO & Bonds). This research report has been prepared and distributed by ASBL in the sole capacity of a Research Analyst (Reg No. INH00000206) of SEBI (Research Analyst) Regulations 2014. ASBL is a wholly owned subsidiary of Ashika Global Securities (P) Ltd., a RBI registered non-deposit taking NBFC Company. Ashika group (details is enumerated on our website [www.ashikagroup.com](http://www.ashikagroup.com)) is an integrated financial service provider inter alia engaged in the business of Investment Banking, Corporate Lending, Commodity Broking, Debt Syndication & Other Advisory Services.

There were no significant and material disciplinary actions against ASBL taken by any regulatory authority during last three years.

### Disclosure

ASBL or its associates, its Research Analysts (including their relatives) may have financial interest in the subject company(ies). However, the said financial interest is not limited to having an open stock market position in /acting as advisor to /having a loan transaction with the subject company(ies) apart from registration as clients.

- ASBL or its Research Analysts (including their relatives) do not have any actual / beneficial ownership of 1% or more of securities of the subject company(ies) at the end of the month immediately preceding the date of publication of this report or date of the public appearance. However ASBL's associates may have actual / beneficial ownership of 1% or more of securities of the subject company(ies).
- ASBL or their Research Analysts (including their relatives) do not have any other material conflict of interest at the time of publication of this research report or date of the public appearance. However ASBL's associates might have an actual / potential conflict of interest (other than ownership).
- ASBL or its associates may have received compensation for investment banking, merchant banking, and brokerage services and for other products and services from the subject companies during the preceding 12 months. However, ASBL or its associates or its Research analysts (forming part of Research Desk) have not received any compensation or other benefits from the subject companies or third parties in connection with the research report. Moreover, Research Analysts have not received any compensation from the companies mentioned herein in the past twelve months.
- ASBL or their Research Analysts have not managed or co-managed public offering of securities for the subject company(ies) in the past twelve months. However ASBL's associates may have managed or co-managed public offering of securities for the subject company(ies) in the past twelve months.
- Research Analysts have not served as an officer, director or employee of the companies mentioned in the report.
- Neither ASBL nor its Research Analysts have been engaged in market making activity for the companies mentioned in the report.

### Disclaimer

The research recommendation and information herein are solely for the personal information of the authorized recipient and does not construe to be an offer documents or any investment, legal or taxation advice or solicitation of any action based upon it. This report is not for public distribution or use by any person or entity, where such distribution, publication, availability or use would be contrary to law, regulation or subject to any registration or licensing requirement. We will not treat recipients as customer by virtue of their receiving this report. The report is based upon the information obtained from public sources that we consider reliable, but we do not guarantee its accuracy or completeness. ASBL shall not be in anyways responsible for any loss or damage that may arise to any such person from any inadvertent error in the information contained in this report. The recipients of this report should rely on their own investigations.