

Technical Report

Closing Brief

Benchmark indices kicked off the day with a gap up opening tracking positive cues from the Asian peers and a record closing on the Wall Street with Dow Jones closing above 19000 mark. Nifty was seen trading sideways to positive bias amid buying continued in the Metal stocks which helped the index inch higher by 31 points to close the day at 8033.30 levels.

Technical Build up

- ❖ Bullish candle with decrease in volume
- ❖ Sell crossover in oscillators.
- ❖ Lower band of Bollinger exist at 7911
- ❖ Crucial moving average of 20/50 SMA are at 8392 and 8595
- ❖ 200 SMA trend deciding level exist at 8136

Outlook for the day

Indian Equity market managed to end marginally higher on Wednesday, in continuation to previous session's rebound. Investors continued to accumulate quality stocks at reasonable valuations, though they are worried over quarterly earnings growth after currency demonetisation. On the technical front, Nifty retraced 50% Fibo retracement of the upmove from Feb Budget day lows to Sept peak, Nifty is now attempting to rebound. Moreover, an 'inside day' signifies pause in the steep near-term decline aided by oversold readings on momentum oscillators. The index is likely to retest 8145 (200-DMA) to 8200 in the coming few sessions following which renewed selling pressure should emerge. Going forward, the trend on the index still remains to be in a bear grip with immediate supports pegged around 7980 levels followed by 7900 levels. While on the upside, index may face resistance around 8080-8100 levels in the near term. On the F&O front With only a day before November futures expiry, Nifty rollovers were unusually low at 37%, the lowest in more than six months, as against 48.26% seen in the same period last month. Bank nifty's roll over was also low at 28.91% vs 46.19% in the same period last month. On the option front Looking at the options data, maximum Put OI was seen at strike price 8,000 followed by 7,800 while maximum Call OI was seen at strike price 8,200 followed by 8,500

Technical & Derivative Report

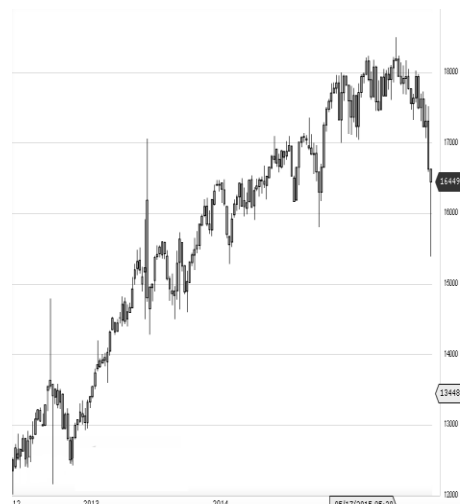
World Indices	LTP	Daily Ch(Pts)	Daily Ch(%)
Dow Jones	19083	59	0.31
Nasdaq	5380	-5	-0.11
S&P 500	2204	1	0.08
FTSE 100	6817	-2	-0.03
DAX	10662	-51	-0.48
Hang Seng	22561	-114	-0.51
Nikkei	18337	174	0.96
Sensex	26051	91	0.35
Nifty	8033	31	0.39

Commodity /Forex	LTP	Daily Ch(Pts)	Daily Ch(%)
Gold (\$/Oz)	1184.50	-4.80	-0.40
Silver (\$/Oz)	16.37	-0.11	-0.70
Copper(USD/lb.)	268.20	6.45	2.46
Brent Crude(USD/bbl)	48.97	0.02	0.04
USD/INR	68.56	0.31	0.45
USD/YEN	112.65	0.13	0.12
USD/EUR	1.0535	-0.0018	-0.17

Support/Resistance levels for Indian Equity Indices					
	S1	S2	CMP	R1	R2
Sensex			26051		
Nifty	7980	7930	8033	8070	8110
Nifty (Fut)			8024		

Pivot Level					
Sensex				26019	
Nifty				8020	

US: US market closed mixed on Wednesday as investors digested a number of economic data, including minutes from the Federal Reserve's November meeting. Technically DJIA is presently trading at the 5th leg through Elliot wave count with negative divergence in oscillators.



Increase in OI with Increase in Price (Long Buildup)						Increase in OI with Decrease in Price (Short Buildup)					
Symbol	Prev OI	Curr OI	OI Chg (%)	Curr Pr.	Pr.Ch g (%)	Symbol	Prev OI	Curr OI	OI Chg (%)	Curr Pr.	Pr.Chg (%)
TORNTP						INFRATE					
OWER	62	453	630.7	169.4	0.6	L	472	1262	167.4	361	[0.1]
UPL	635	3269	414.8	615.75	0.9	CESC	332	776	133.7	573.95	[0.2]
PTC	399	1518	280.5	69.5	1.8	SIEMEN					
HINDZIN						S	536	1208	125.4	1058	[2.3]
C	459	1484	223.3	257.8	1.4	APOLLO					
ZEEL	1207	3576	196.3	457.5	1.4	TYRE	758	1655	118.3	178.8	[3.2]
						DISHTV	1558	3192	104.9	84.75	[1.9]

Nifty gained by 0.39% with Nifty future added 0.7 lakh shares in open interest and stock future added 215.4 Lakh shares in open interest.

- Nifty PCR increased to 0.72 from 0.71
- Total Nifty Calls shaded 11.5 lakh shares in open interest.
- Total Nifty Puts added 25.3 lakh shares in open interest.
- Maximum open interest (Nifty) in Calls for Oct series is at 8200 and 8000 put.
- FII's sold net Rs.1023.12 Cr(provisional), while DIIs bought net Rs.1254.67 Cr in cash market.
- FII bought net Rs.310.79 Cr in F&O
- Securities in Ban Period: IBREALEST

Nifty Tracker

PARTICULARS	24/11/2016	23/11/2016	22/11/2016	18/11/2016
Spot	8033.3	8002.3	7929.1	8074.1
% Change in Spot	0.39%	0.92%	-1.80%	-0.07%
Nifty(FUT) Nov	8024.85	8006.8	7939.2	8074.7
Nifty(FUT) Nov Vol.	189589	191046	223161	152215
Nifty(FUT) Nov - OI	12752475	15260850	16655175	17458950
Nifty(FUT) Dec	8064.7	8044.95	7977.15	8121.25
Nifty(FUT) Dec Vol.	86545	68215	64886	17933
Nifty(FUT) Dec - OI	9187350	6691500	4914000	2148600

Trade Statistics for 24/11/2016

PARTICULARS	NO. OF CONTRACTS	TURNOVER (RS. CR.)	PUT CALL RATIO
NSE Index Futures	3,83,354	24523	-
NSE Stock Futures	12,33,383	75897	-
NSE Index Options	63,04,304	4,09,100.42	-
NSE Stock Options	3,91,796	26985	0.54
NSE F&O Total Turnover	83,12,837	536,505	0.8
NSE Cash Turnover	-	18,594.61	-
BSE Cash Turnover	-	2,499.34	-
Total Turnover	-	557599	-

FII Corner (F&O)

FII NET BUYING/SELLING & CHANGE IN OPEN INTEREST (Cr. Rupee)						
PARTICULARS	24/11/2016		23/11/2016		22/11/2016	
	Net Buying /Selling	Change In Open interest	Net Buying /Selling	Change In Open interest	Net Buying /Selling	Change In Open interest
Index Future	-55	876	371	1783	1170	2693
Index option	-1054	443	-317	592	1198	-1797
Stock Future	1458	2175	1397	2257	684	443
Stock option	-39	-87	51	190	-67	-214
Total	310	3407	1502	4823	2985	1124

Market Open Interest

ADDITION/REDUCTION IN MARKET OPEN INTEREST					
Contracts	24/11/2016	23/11/2016	22/11/2016	18/11/2016	17/11/2016
Index Futures	-98	773	1504	-407	-69
Index Options	1054	1544	-1679	105	368
Stock Futures	4811	1481	4771	-15336	11614
Stock Options	-583	-1007	-44	-1711	164
F&O Total	5184	2791	4551.19	-17348.6	12077.01

Nifty Option Open Interest Statistics

NIFTY OPTIONS HIGHEST ADDITION IN OPEN INTEREST						
Expiry	Strike	Option Type	Settlement Price	Volume	Open Interest	Change In OI
24-Nov-16	8000	PE	26.65	605549	5161275	770325
24-Nov-16	8050	CE	20.5	172858	1408050	648675
29-Dec-16	8000	PE	135.35	43674	5154350	484325
29-Dec-16	7600	PE	43.15	25251	1055400	423150
24-Nov-16	8100	CE	6.9	545645	4930350	395325
24-Nov-16	8200	CE	1.3	386226	5352750	354000
24-Nov-16	8050	PE	48.4	49390	562800	339000
29-Dec-16	8600	CE	11.85	15916	1274925	325875
29-Dec-16	7500	PE	31.65	26617	1884075	301825
29-Dec-16	7000	PE	6.75	11909	1385475	299375

NIFTY OPTIONS HIGHEST REDUCTION IN OPEN INTEREST						
Expiry	Strike	Option Type	Settlement Price	Volume	Open Interest	Change In OI
24-Nov-16	8000	CE	47.3	506833	2789325	-551625
24-Nov-16	8400	PE	370.25	9402	1110225	-441300
24-Nov-16	9000	PE	965.4	5909	345975	-372975
24-Nov-16	8500	CE	0.25	46162	4878975	-350325
24-Nov-16	8400	CE	0.3	41538	3286800	-309825
24-Nov-16	7950	CE	82.95	24940	217875	-287700
24-Nov-16	8100	PE	81.3	118540	1198500	-251400
24-Nov-16	8700	PE	667.15	4521	297000	-250425
24-Nov-16	8300	PE	268.1	9101	1330050	-247800
24-Nov-16	8700	CE	0.25	12358	4458375	-245400

Stock Option Open Interest Statistics

STOCK OPTIONS WITH HIGHEST ADDITION IN OPEN INTEREST							
Symbol	Expiry	Strike	Option Type	Settl. Price	Volume	Open Interest	Change in OI
VEDL	24-Nov-16	210	PE	0.75	2355	3486000	2718000
ADANIPOWER	29-Dec-16	27.5	PE	3.05	95	1800000	1800000
HINDALCO	24-Nov-16	170	PE	1.15	2193	2359000	1746500
ADANIPOWER	29-Dec-16	27.5	CE	0.35	95	1880000	1580000
RCOM	24-Nov-16	37.5	CE	0.1	638	4190000	1410000
VEDL	24-Nov-16	215	PE	1.9	1167	1572000	1290000
DLF	24-Nov-16	115	PE	1.3	749	1680000	1025000
DLF	24-Nov-16	110	PE	0.45	1519	2450000	865000
HDIL	24-Nov-16	60	CE	0.35	674	3168000	832000
ASHOKLEY	24-Nov-16	75	PE	0.2	723	2016000	770000

STOCK OPTIONS WITH HIGHEST REDUCTION IN OPEN INTEREST							
Symbol	Expiry	Strike	Option Type	Settl. Price	Volume	Open Int.	Change in OI
ADANIPOWER	24-Nov-16	27.5	PE	2.85	98	1180000	-1640000
HINDALCO	24-Nov-16	165	CE	9.1	993	437500	-1365000
SBIN	24-Nov-16	280	CE	0.1	927	3861000	-912000
VEDL	24-Nov-16	210	CE	6.9	1872	2304000	-888000
VEDL	24-Nov-16	205	CE	11.35	383	684000	-852000
VEDL	24-Nov-16	200	CE	16.3	258	708000	-804000
DLF	24-Nov-16	110	CE	7.4	515	1220000	-720000
ICICIBANK	24-Nov-16	300	CE	0.05	314	5347500	-682500
HINDALCO	24-Nov-16	160	CE	13.6	306	584500	-633500
GMRINFRA	24-Nov-16	12.5	PE	1.3	14	5310000	-630000

Name	Designation	Email ID	Contact No.
Paras Bothra	President Equity Research	paras@ashikagroup.com	+91 22 6611 1704
Krishna Kumar Agarwal	Equity Research Analyst	krishna.a@ashikagroup.com	+91 33 4036 0646
Partha Mazumder	Equity Research Analyst	partha.m@ashikagroup.com	+91 33 4036 0647
Arijit Malakar	Equity Research Analyst	amalakar@ashikagroup.com	+91 33 4036 0644
Chanchal Bachhawat	Equity Research Analyst	chanchal.bachhawat@ashikagroup.com	+91 22 6611 1712
Tirthankar Das	Technical & Derivative Analyst	tirthankar.d@ashikagroup.com	+91 33 4036 0645

SEBI Registration No. INH000000206

Disclosure

The Research Analysts and /or Ashika Stock Broking Limited do hereby certify that all the views expressed in this research report accurately reflect their views about the subject issuer(s) or securities. Moreover, they also certify the followings:-

- The Research Analyst or Ashika Stock Broking Limited or his/its Associates or his/its relative, has any financial interest in the subject company (ies) covered in this report. **Yes**
- The Research Analyst or Ashika Stock Broking Limited or his/its Associates or his/its relative, have actual/beneficial ownership of 1% or more in the subject company, at the end of the month immediately preceding the date of the publication of the research report. **No**
- The Research Analyst or Ashika Stock Broking Limited or his/its Associates or his/its relatives has any material conflict of interest at the time of publication of the research report. **No**
- The Research Analyst or Ashika Stock Broking Limited or his/its Associates have received any compensation or compensation for investment banking or merchant banking or brokerage services or for product other than for investment banking or merchant banking or brokerage services from the companies covered in this report in the past 12 months. **No**
- The Research Analyst or Ashika Stock Broking Limited or his/its Associates have managed or co managed in the previous 12 months any private or public offering of securities for the company (ies) covered in this report. **No**
- The Research Analyst or Ashika Stock Broking Limited or his/its Associates have received any compensation or other benefits from the company (ies) covered in this report or any third party in connection with the Research Report. **No**
- The Research Analyst has served as an officer, director or employee of the company (ies) covered in the research report. **No**
- The Research Analyst or Ashika Stock Broking Limited has been engaged in Market making activity of the company (ies) covered in the research report. **No**

Disclaimer

This report is for the personal information of the authorized recipient and does not construe to be any investment, legal or taxation advice to you. Ashika Stock Broking Ltd. is not soliciting any action based upon it. This report is not for public distribution and has been furnished to you solely for your information and should not be reproduced or redistributed to any other person in any form. The report is based upon information that we consider reliable, but we do not represent that it is accurate or complete, and it should not be relied upon such. Ashika Stock Broking Ltd. or any of its affiliates or employees shall not be in anyway responsible for any loss or damage that may arise to any person from any inadvertent error in the information contained in this report. Ashika Stock Broking Ltd. or any of its affiliates or employees do not provide at any time, any express or implied