

Technical Report

Closing Brief

Benchmark indices started on a weak note tracking mixed cues from the Asian equities and rupee declining to fresh lows amid sustained foreign fund outflows. The index closed with a loss of 67.80 points at 7965.50 levels.

Technical Build up

- ❖ Bearish candle with increase in volume
- ❖ Sell crossover in oscillators.
- ❖ Lower band of Bollinger exist at 7825
- ❖ Crucial moving average of 20/50 SMA are at 8326 and 8558
- ❖ 200 SMA trend deciding level exist at 8141

Outlook for the day

Indian Equity market settled below 8000 on F&O expiry day amid excessive volatility, down by nearly a percent. Weak global cues were weighing on sentiments from the beginning, mainly in reaction to upbeat US economic data and Fed meeting minutes, reinforcing the possibility of rate hike in December. Continued disruption in Rajya Sabha by opposition parties over currency demonetisation also dented the market sentiment. On the technical front, the trend in index still remains to be in a bear grip with immediate supports pegged around 7900 levels followed by 7850 levels. While on the upside resistance for the index is seen around 8060 levels and above that at 8100 levels. However one need to keep in mind that the market is deeply oversold and we may witness a decent bounce soon. On the F&O front rollover of open interest positions to the December series of the Nifty is 63 per cent, lower than the three-month average of about 71 per cent. Market-wide rollovers stood at 70 per cent, which is also lower than the average previous three-month figure of 76-78 per cent. The roll cost was low at 48-50 basis points compared to an average of 60-65 basis points indicating that positions have been rolled over but with caution

Technical & Derivative Report

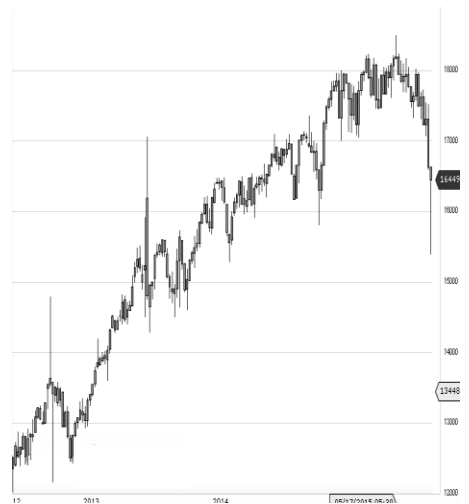
World Indices	LTP	Daily Ch(Pts)	Daily Ch(%)
Dow Jones	19083	59	0.31
Nasdaq	5380	-5	-0.11
S&P 500	2204	1	0.08
FTSE 100	6829	11	0.17
DAX	10689	26	0.25
Hang Seng	22660	51	0.23
Nikkei	18470	136	0.75
Sensex	25860	-191	-0.74
Nifty	7965	-67	-0.84

Commodity /Forex	LTP	Daily Ch(Pts)	Daily Ch(%)
Gold (\$/Oz)	1176.60	-12.70	-1.07
Silver (\$/Oz)	16.32	-0.17	-1.03
Copper(USD/lb.)	267.50	5.75	2.20
Brent Crude(USD/bbl)	49.01	0.01	0.02
USD/INR	68.74	0.18	0.27
USD/YEN	113.77	0.44	0.39
USD/EUR	1.0555	0.0001	0.01

Support/Resistance levels for Indian Equity Indices					
	S1	S2	CMP	R1	R2
Sensex	25740	25610	25860	26160	26280
Nifty	7930	7890	7965	8055	8090
Nifty (Fut)	7980	7940	8013	8105	8140

Pivot Level	
Sensex	25906
Nifty	7980

US: US market closed mixed on Wednesday as investors digested a number of economic data, including minutes from the Federal Reserve's November meeting. Technically DJIA is presently trading at the 5th leg through Elliot wave count with negative divergence in oscillators.



Increase in OI with Increase in Price (Long Buildup)						Increase in OI with Decrease in Price (Short Buildup)					
Symbol	Prev OI	Curr OI	OI Chg (%)	Curr Pr.	Pr.Chg (%)	Symbol	Prev OI	Curr OI	OI Chg (%)	Curr Pr.	Pr.Chg (%)
UBL	401	1515	277.8	868	0.8	KPIT	189	926	390	125.8	[1.2]
NIIITEC						MCLEO					
H	205	602	193.7	403.7	0.4	DRUSS	595	1440	142	146.5	[1.2]
OIL	205	490	139	440.55	2.8	DIVISLA					
CESC	776	1782	129.6	573.1	0.1	B	819	1882	129.8	1154.3	[2.7]
COLPAL	274	619	125.9	928	0.5	AJANTP					
						HARM	352	782	122.2	1778	[2.8]
						PIDILITI					
						ND	588	1235	110	615.5	[0.7]

Nifty declined by 0.84% at 7965.50 on the last day of Nov expiry. Nifty declined by 7.54% in Nov expiry against a gain of 0.27% in Oct (expiry to expiry). Nifty started the month with 159 lakh shares in open interest and stock future with 276 lakh shares in open interest.

- Nifty PCR is at 0.94 against 0.98 on the first day of Dec expiry.
- Total Nifty Calls started with 48 lakh shares in open interest against 37 lakh shares in last month.
- Total Nifty Puts started with 46 lakh shares in open interest against 36 lakh shares in last month.
- Maximum open interest (Nifty) in Calls for Nov series is at 8000 and 8000 put.
- FII's sold net Rs.2010.15Cr (provisional), while DIIs bought net Rs.1648.22 Cr in cash market.
- FII sold net Rs.2611.66 Cr in F&O
- Securities in Ban Period: NIL

Nifty Tracker

PARTICULARS	25/11/2016	24/11/2016	23/11/2016	22/11/2016
Spot	7965.5	8033.3	8002.3	7929.1
% Change in Spot	-0.84%	0.39%	0.92%	-1.80%
Nifty(FUT) Nov	7968.2	8024.85	8006.8	7939.2
Nifty(FUT) Nov Vol.	218779	189589	191046	223161
Nifty(FUT) Nov - OI	9314925	12752475	15260850	16655175
Nifty(FUT) Dec	8013.1	8064.7	8044.95	7977.15
Nifty(FUT) Dec Vol.	184219	86545	68215	64886
Nifty(FUT) Dec - OI	15015450	9187350	6691500	4914000

Trade Statistics for 25/11/2016

PARTICULARS	NO. OF CONTRACTS	TURNOVER (RS. CR.)	PUT CALL RATIO
NSE Index Futures	5,87,008	37624	-
NSE Stock Futures	15,10,982	92629	-
NSE Index Options	95,51,052	6,22,190.59	-
NSE Stock Options	4,42,790	30893	0.6
NSE F&O Total Turnover	1,20,91,832	783,338	0.88
NSE Cash Turnover	-	23,741.89	-
BSE Cash Turnover	-	2,481.01	-
Total Turnover	-	809560	-

FII Corner (F&O)

FII NET BUYING/SELLING & CHANGE IN OPEN INTEREST (Cr. Rupee)						
PARTICULARS	25/11/2016		24/11/2016		23/11/2016	
	Net Buying /Selling	Change In Open interest	Net Buying /Selling	Change In Open interest	Net Buying /Selling	Change In Open interest
Index Future	-1563	-10499	-55	876	371	1783
Index option	66	-39149	-1054	443	-317	592
Stock Future	-1153	-11756	1458	2175	1397	2257
Stock option	39	-7874	-39	-87	51	190
Total	-2611	-69279	310	3407	1502	4823

Market Open Interest

ADDITION/REDUCTION IN MARKET OPEN INTEREST					
Contracts	25/11/2016	24/11/2016	23/11/2016	22/11/2016	18/11/2016
Index Futures	2600	-98	773	1504	-407
Index Options	3105	1054	1544	-1679	105
Stock Futures	12591	4811	1481	4771	-15336
Stock Options	696	-583	-1007	-44	-1711
F&O Total	18992	5184	2790.59	4551.19	-17348.6

Nifty Option Open Interest Statistics

NIFTY OPTIONS HIGHEST ADDITION IN OPEN INTEREST						
Expiry	Strike	Option Type	Settlement Price	Volume	Open Interest	Change In OI
29-Dec-16	8400	CE	22.95	62096	2836425	1126350
29-Dec-16	8200	CE	68.85	68276	2701500	667725
29-Dec-16	8300	CE	40.5	60119	2864925	657300
29-Dec-16	8100	CE	109.25	53682	1804650	597825
29-Dec-16	8500	CE	12.8	50514	3482925	582075
29-Dec-16	8000	CE	160.7	61799	3691625	576850
29-Dec-16	10000	CE	1.25	9870	817400	502425
29-Dec-16	7600	PE	45.45	36019	1549650	494250
29-Dec-16	7700	PE	61.45	43941	1925400	450750
29-Dec-16	8000	PE	147.5	75334	5595200	440850

NIFTY OPTIONS HIGHEST REDUCTION IN OPEN INTEREST						
Expiry	Strike	Option Type	Settlement Price	Volume	Open Interest	Change In OI
25-Jan-17	8200	PE	286.3	230	90450	-11475
25-Jan-17	8000	PE	184.7	1057	269175	-6450
29-Dec-16	6500	PE	1.35	1948	464000	-5775
29-Dec-16	9500	CE	1.3	2285	1051800	-4050
25-Jan-17	8500	PE	496.85	128	114675	-3600
28-Dec-17	8800	PE	745	40	136100	-3000
25-Jan-17	8100	PE	232.4	140	73725	-2625
29-Dec-16	7050	PE	6.6	554	56550	-1950
29-Dec-16	6000	PE	1.25	245	361800	-1500
29-Dec-16	5500	CE	2495.9	18	32175	-1275

Stock Option Open Interest Statistics

STOCK OPTIONS WITH HIGHEST ADDITION IN OPEN INTEREST							
Symbol	Expiry	Strike	Option Type	Settl. Price	Volume	Open Interest	Change in OI
GMRINFRA	29-Dec-16	15	CE	0.05	44	1935000	1755000
GMRINFRA	29-Dec-16	15	PE	3.8	38	1845000	1530000
IFCI	29-Dec-16	25	CE	0.45	131	2904000	1474000
JPASSOCIAT	29-Dec-16	10	CE	0.1	25	2516000	1156000
GMRINFRA	29-Dec-16	12.5	CE	0.25	39	3690000	1035000
ADANIPOWER	29-Dec-16	27.5	CE	0.35	114	2760000	880000
RECLTD	29-Dec-16	135	CE	4.65	246	1050000	864000
RCOM	29-Dec-16	40	CE	0.65	132	2490000	770000
JPASSOCIAT	29-Dec-16	5	PE	0.05	13	1496000	748000
IFCI	29-Dec-16	30	PE	7.25	33	814000	726000

STOCK OPTIONS WITH HIGHEST REDUCTION IN OPEN INTEREST							
Symbol	Expiry	Strike	Option Type	Settl. Price	Volume	Open Int.	Change in OI
BANKINDIA	29-Dec-16	100	PE	0.95	22	60000	-90000
AUROPHARMA	29-Dec-16	700	PE	26	241	66500	-81900
ITC	29-Dec-16	215	PE	2.9	85	283200	-67200
SOUTHBANK	29-Dec-16	17.5	PE	0.1	4	120000	-60000
HDIL	29-Dec-16	47.5	PE	0.75	11	56000	-40000
TATASTEEL	29-Dec-16	370	CE	36	24	160000	-26000
AMBUJACEM	29-Dec-16	195	CE	11.25	20	35000	-25000
CROMPGREAV	29-Dec-16	77.5	CE	3.1	4	48000	-24000
SUNPHARMA	29-Dec-16	660	PE	12.8	139	52800	-22200
IFCI	29-Dec-16	45	CE	0.05	1	0	-22000

Name	Designation	Email ID	Contact No.
Paras Bothra	President Equity Research	paras@ashikagroup.com	+91 22 6611 1704
Krishna Kumar Agarwal	Equity Research Analyst	krishna.a@ashikagroup.com	+91 33 4036 0646
Partha Mazumder	Equity Research Analyst	partha.m@ashikagroup.com	+91 33 4036 0647
Arijit Malakar	Equity Research Analyst	amalakar@ashikagroup.com	+91 33 4036 0644
Chanchal Bachhawat	Equity Research Analyst	chanchal.bachhawat@ashikagroup.com	+91 22 6611 1712
Tirthankar Das	Technical & Derivative Analyst	tirthankar.d@ashikagroup.com	+91 33 4036 0645

SEBI Registration No. INH000000206

Disclosure

The Research Analysts and /or Ashika Stock Broking Limited do hereby certify that all the views expressed in this research report accurately reflect their views about the subject issuer(s) or securities. Moreover, they also certify the followings:-

- The Research Analyst or Ashika Stock Broking Limited or his/its Associates or his/its relative, has any financial interest in the subject company (ies) covered in this report. **Yes**
- The Research Analyst or Ashika Stock Broking Limited or his/its Associates or his/its relative, have actual/beneficial ownership of 1% or more in the subject company, at the end of the month immediately preceding the date of the publication of the research report. **No**
- The Research Analyst or Ashika Stock Broking Limited or his/its Associates or his/its relatives has any material conflict of interest at the time of publication of the research report. **No**
- The Research Analyst or Ashika Stock Broking Limited or his/its Associates have received any compensation or compensation for investment banking or merchant banking or brokerage services or for product other than for investment banking or merchant banking or brokerage services from the companies covered in this report in the past 12 months. **No**
- The Research Analyst or Ashika Stock Broking Limited or his/its Associates have managed or co managed in the previous 12 months any private or public offering of securities for the company (ies) covered in this report. **No**
- The Research Analyst or Ashika Stock Broking Limited or his/its Associates have received any compensation or other benefits from the company (ies) covered in this report or any third party in connection with the Research Report. **No**
- The Research Analyst has served as an officer, director or employee of the company (ies) covered in the research report. **No**
- The Research Analyst or Ashika Stock Broking Limited has been engaged in Market making activity of the company (ies) covered in the research report. **No**

Disclaimer

This report is for the personal information of the authorized recipient and does not construe to be any investment, legal or taxation advice to you. Ashika Stock Broking Ltd. is not soliciting any action based upon it. This report is not for public distribution and has been furnished to you solely for your information and should not be reproduced or redistributed to any other person in any form. The report is based upon information that we consider reliable, but we do not represent that it is accurate or complete, and it should not be relied upon such. Ashika Stock Broking Ltd. or any of its affiliates or employees shall not be in anyway responsible for any loss or damage that may arise to any person from any inadvertent error in the information contained in this report. Ashika Stock Broking Ltd. or any of its affiliates or employees do not provide at any time, any express or implied