

Technical Report

Closing Brief

Indian market started the day on an optimistic note with Nifty opening around 9273 levels near its previous swing high levels. Post which, index was seen trading with bullish bias throughout the day and finally managed to close above the 9300 mark at fresh high of 9306.60 levels posting gains around 88.65 points.

Technical Build up

- ❖ Bullish candle with marginal decrease in volume
- ❖ Buy crossover in oscillators.
- ❖ Upper/Lower band of Bollinger exist at 9304
- ❖ Crucial moving average of 20/50 SMA are at 9175 and 9036
- ❖ 200 SMA trend deciding level exist at 8620

Outlook for the day

Indian Equity market made an exceptional start of the week and gained over a percent. better-than-expected quarterly corporate earnings and the forecast of a normal monsoon buoyed investors. On the technical front, Nifty formed bullish candle and continued its up move for second consecutive session and registered a fresh record life time high of 9309, the resumption of bullish momentum can take index to 9,350 in April expiry while May series can test higher levels. The fall to 9,220-9,240 can be buy-on-dip opportunity. Nifty has immediate support placed around 9270 levels while the next support is placed around 9220 levels. While on the higher side the immediate resistance is placed around 9360 levels. On the F&O front marketwide rollovers stood at 39%, which were lower than the average rollover of 43% , Nifty futures rollovers stood at 42% compared with the average rollover of 46%. On the option front data indicates incremental put writing at 9200-9300 area while call unwinding was witnessed in 9200 strike. Immediate option indicative band is at 9100-9300. Option Pain level has shifted to 9200.



Technical & Derivative Report

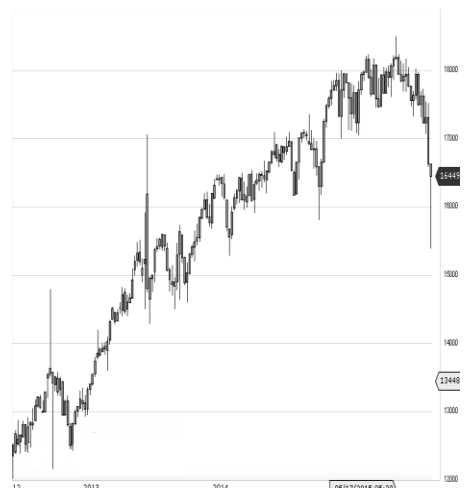
World Indices	LTP	Daily Ch(Pts)	Daily Ch(%)
Dow Jones	20996	232	1.12
Nasdaq	6025	41	0.70
S&P 500	2388	14	0.61
FTSE 100	7275	10	0.15
DAX	12467	12	0.10
Hang Seng	24563	107	0.44
Nikkei	19191	112	0.59
Sensex	29943	287	0.97
Nifty	9306	88	0.96

Commodity /Forex	LTP	Daily Ch(Pts)	Daily Ch(%)
Gold (\$/Oz)	1265.20	-2.00	-0.16
Silver (\$/Oz)	17.66	-	-0.02
Copper(USD/lb.)	259.40	0.30	0.12
Brent Crude(USD/bbl)	51.92	-0.18	-0.35
USD/INR	64.27	-0.16	-0.25
USD/YEN	111.20	0.11	0.10
USD/EUR	1.0939	0.0013	0.12

Support/Resistance levels for Indian Equity Indices					
	S1	S2	CMP	R1	R2
Sensex	29820	29650	29943	30120	30250
Nifty	9270	9220	9306	9360	9400
Nifty (Fut)	9260	9210	9293	9350	9390

Pivot Level	
Sensex	29895
Nifty	9288

US: US market rose sharply on Tuesday as solid quarterly reports from several large-cap companies rolled through. Technically DJIA is presently trading at the 5th leg through Elliot wave count with negative divergence in oscillators.



Increase in OI with Increase in Price (Long Buildup)						Increase in OI with Decrease in Price (Short Buildup)					
Symbol	Prev OI	Curr OI	OI Chg (%)	Curr Pr.	Pr.Chg (%)	Symbol	Prev OI	Curr OI	OI Chg (%)	Curr Pr.	Pr.Chg (%)
BHARTI						TCS	21157	28324	33.9	2313.75	[0.5]
ARTL	20685	29457	42.4	352.9	2.7	HCLTEC					
ITC	16084	21556	34	281.2	1.6	H	12099	15432	27.6	815.1	[0.6]
WIPRO	7484	9625	28.6	493	0.2	TATAM					
CAIRN	5165	6377	23.5	285.35	0.8	OTORS	24462	30503	24.7	444.8	[0.0]
DABUR	3575	4411	23.4	294.4	0.3	NTPC	4848	5361	10.6	165.4	[0.7]
						TATAMT					
						RDVR	8140	8921	9.6	271.2	[0.1]

Nifty gained by 0.96% with Nifty future added 47.6 lakh shares in open interest and stock future added 2329.8 Lakh shares in open interest.

- Nifty PCR increased to 1.27 from 1.20
- Total Nifty Calls shaded 4.4 lakh shares in open interest.
- Total Nifty Puts added 42.2 lakh shares in open interest.
- Maximum open interest (Nifty) in Calls for Jan series is at 9300 and 9000 put.
- FII's bought net Rs.178.82Cr(provisional), while DIIs bought net Rs.998.26 Cr in cash market.
- FII bought net Rs.1306.33 Cr in F&O
- Securities in Ban Period: ADANIENT, BANKINDIA, HDIL, IBREALEST, ICIL, INFIBEAM, JINDALSTEL, JPASSOCIAT, JSWENERGY, RCOM, TV18BRDCST, UJJIVAN & WOCKPHARMA.

Nifty Tracker

PARTICULARS	25/04/2017	24/04/2017	21/04/2017	20/04/2017
Spot	9306.6	9217.95	9119.4	9136.4
% Change in Spot	0.96%	1.08%	-0.19%	0.36%
Nifty(FUT) Apr	9293.9	9224.45	9127	9162.6
Nifty(FUT) Apr Vol.	173277	171698	133239	85729
Nifty(FUT) Apr - OI	16773075	16614525	18648975	19533900
Nifty(FUT) May	9318	9251.65	9151.25	9182.95
Nifty(FUT) May Vol.	91628	66372	17937	6362
Nifty(FUT) May - OI	11712300	7274925	3566250	2983650

Trade Statistics for 24/04/2017

PARTICULARS	NO. OF CONTRACTS	TURNOVER (RS. CR.)	PUT CALL RATIO
NSE Index Futures	3,65,675	27164	-
NSE Stock Futures	15,35,977	1,12,889.91	-
NSE Index Options	53,85,047	4,08,574.36	-
NSE Stock Options	6,45,823	50795	0.43
NSE F&O Total Turnover	79,32,522	599,422	1.03
NSE Cash Turnover	-	29,310.01	-
BSE Cash Turnover	-	4006.89	-
Total Turnover	-	632739	-

FII Corner (F&O)

FII NET BUYING/SELLING & CHANGE IN OPEN INTEREST (Cr. Rupee)						
PARTICULARS	25/04/2017		24/04/2017		21/04/2017	
	Net Buying /Selling	Change In Open interest	Net Buying /Selling	Change In Open interest	Net Buying /Selling	Change In Open interest
Index Future	-805	3923	403	2715	-1238	-804
Index option	441	1936	745	-1076	512	1135
Stock Future	1806	6817	1204	7869	-91	-264
Stock option	-135	131	-140	151	-56	46
Total	1307	12806	2212	9658	-873	113

Market Open Interest

ADDITION/REDUCTION IN MARKET OPEN INTEREST					
Contracts	25/04/2017	24/04/2017	21/04/2017	20/04/2017	19/04/2017
Index Futures	5163	3067	-247	-470	109
Index Options	6870	6496	1112	1411	1919
Stock Futures	6516	6897	-20962	13219	6788
Stock Options	386	363	812	379	564
F&O Total	18934	16823	-19284.89	14539.4	9380.64

Nifty Option Open Interest Statistics

NIFTY OPTIONS HIGHEST ADDITION IN OPEN INTEREST						
Expiry	Strike	Option Type	Settlement Price	Volume	Open Interest	Change In OI
27-Apr-17	9200	PE	30.2	305290	4666350	2150400
27-Apr-17	9150	PE	17.6	133284	1901100	1166925
27-Apr-17	9100	PE	11.05	427843	5970450	937500
25-May-17	9100	PE	64.1	32746	1974750	651675
25-May-17	7500	CE	1731.35	6634	652275	479025
27-Apr-17	9250	PE	50.5	16443	635475	365925
27-Apr-17	8900	PE	2.5	120989	4787775	324300
25-May-17	8900	PE	27.4	21488	1736250	319050
27-Apr-17	9000	PE	5	270817	5446800	299175
25-May-17	8000	CE	1235.1	4190	667650	293175

NIFTY OPTIONS HIGHEST ADDITION IN OPEN INTEREST						
Expiry	Strike	Option Type	Settlement Price	Volume	Open Interest	Change In OI
27-Apr-17	9200	CE	50.9	450809	4311900	-1813125
27-Apr-17	9100	CE	129.95	157107	2304450	-914325
27-Apr-17	7500	CE	1720.7	7429	452700	-514350
27-Apr-17	9050	PE	7	119562	1117050	-420900
27-Apr-17	9150	CE	85.85	67032	965250	-381375
27-Apr-17	9300	CE	10	264774	4021125	-324225
27-Apr-17	9500	CE	0.7	39145	2975250	-311025
27-Apr-17	8000	CE	1216.4	3841	600750	-255225
27-Apr-17	9000	CE	225.2	17470	920325	-213450
27-Apr-17	10500	PE	1273.15	2940	354975	-183600

Stock Option Open Interest Statistics

STOCK OPTIONS WITH HIGHEST ADDITION IN OPEN INTEREST							
Symbol	Expiry	Strike	Option Type	Settl. Price	Volume	Open Interest	Change in OI
GMRINFRA	27-Apr-17	20	CE	0.2	889	13995000	4275000
GMRINFRA	25-May-17	17.5	CE	2.15	179	12735000	3150000
GMRINFRA	27-Apr-17	22.5	CE	0.05	101	3465000	2385000
GMRINFRA	25-May-17	20	CE	1.1	245	6345000	2340000
GMRINFRA	25-May-17	17.5	PE	1.2	70	3960000	2070000
SUZLON	25-May-17	22.5	CE	0.7	68	3360000	1620000
ICICIBANK	27-Apr-17	270	CE	3.3	5301	3407500	1507500
IBREALEST	27-Apr-17	160	CE	2.45	949	1510000	1410000
HDIL	27-Apr-17	100	CE	0.95	1817	3648000	1264000
GMRINFRA	27-Apr-17	17.5	PE	0.15	157	3915000	1080000

STOCK OPTIONS WITH HIGHEST REDUCTION IN OPEN INTEREST							
Symbol	Expiry	Strike	Option Type	Settl. Price	Volume	Open Int.	Change in OI
GMRINFRA	27-Apr-17	17.5	CE	1	576	16335000	-3105000
IBREALEST	27-Apr-17	100	CE	52.9	523	3190000	-2580000
DLF	27-Apr-17	190	CE	3.15	2519	2900000	-2095000
DLF	27-Apr-17	185	CE	6.45	901	1315000	-1585000
ASHOKLEY	27-Apr-17	85	CE	2.55	1009	3479000	-1365000
RCOM	27-Apr-17	40	CE	0.1	151	6204000	-1212000
DLF	27-Apr-17	180	CE	10.35	581	1060000	-1120000
ASHOKLEY	27-Apr-17	90	CE	0.6	1978	5817000	-1043000
JPASSOCIAT	27-Apr-17	15	CE	0.1	21	25908000	-1020000
RPOWER	27-Apr-17	47.5	CE	2.55	259	1212000	-1020000

Research Team

Name	Designation	Email ID	Contact No.
Paras Bothra	President Equity Research	paras@ashikagroup.com	+91 22 6611 1704
Krishna Kumar Agarwal	Equity Research Analyst	krishna.a@ashikagroup.com	+91 33 4036 0646
Partha Mazumder	Equity Research Analyst	partha.m@ashikagroup.com	+91 33 4036 0647
Arijit Malakar	Equity Research Analyst	amalakar@ashikagroup.com	+91 33 4036 0644
Kapil Jagasia, CFA	Equity Research Analyst	kapil.j@ashikagroup.com	+91 22 6611 1715
Tirthankar Das	Technical & Derivative Analyst	tirthankar.d@ashikagroup.com	+91 33 4036 0645

Ashika Stock Broking Limited ("ASBL") or Research Entity has started its journey in the year 1994 and is engaged in the business of broking services, depository services, distributor of financial products (Mutual fund, IPO & Bonds). This research report has been prepared and distributed by ASBL in the sole capacity of a Research Analyst (Reg No. INH00000206) of SEBI (Research Analyst) Regulations 2014. ASBL is a wholly owned subsidiary of Ashika Global Securities (P) Ltd., a RBI registered non-deposit taking NBFC Company. Ashika group (details is enumerated on our website www.ashikagroup.com) is an integrated financial service provider inter alia engaged in the business of Investment Banking, Corporate Lending, Commodity Broking, Debt Syndication & Other Advisory Services.

There were no significant and material disciplinary actions against ASBL taken by any regulatory authority during last three years.

Disclosure

ASBL or its associates, its Research Analysts (including their relatives) may have financial interest in the subject company(ies). However, the said financial interest is not limited to having an open stock market position in /acting as advisor to /having a loan transaction with the subject company(ies) apart from registration as clients.

- ASBL or its Research Analysts (including their relatives) do not have any actual / beneficial ownership of 1% or more of securities of the subject company(ies) at the end of the month immediately preceding the date of publication of this report or date of the public appearance. However ASBL's associates may have actual / beneficial ownership of 1% or more of securities of the subject company(ies).
- ASBL or their Research Analysts (including their relatives) do not have any other material conflict of interest at the time of publication of this research report or date of the public appearance. However ASBL's associates might have an actual / potential conflict of interest (other than ownership).
- ASBL or its associates may have received compensation for investment banking, merchant banking, and brokerage services and for other products and services from the subject companies during the preceding 12 months. However, ASBL or its associates or its Research analysts (forming part of Research Desk) have not received any compensation or other benefits from the subject companies or third parties in connection with the research report. Moreover, Research Analysts have not received any compensation from the companies mentioned herein in the past twelve months.
- ASBL or their Research Analysts have not managed or co-managed public offering of securities for the subject company(ies) in the past twelve months. However ASBL's associates may have managed or co-managed public offering of securities for the subject company(ies) in the past twelve months.
- Research Analysts have not served as an officer, director or employee of the companies mentioned in the report.
- Neither ASBL nor its Research Analysts have been engaged in market making activity for the companies mentioned in the report.

Disclaimer

The research recommendation and information herein are solely for the personal information of the authorized recipient and does not construe to be an offer documents or any investment, legal or taxation advice or solicitation of any action based upon it. This report is not for public distribution or use by any person or entity, where such distribution, publication, availability or use would be contrary to law, regulation or subject to any registration or licensing requirement. We will not treat recipients as customer by virtue of their receiving this report. The report is based upon the information obtained from public sources that we consider reliable, but we do not guarantee its accuracy or completeness. ASBL shall not be in anyways responsible for any loss or damage that may arise to any such person from any inadvertent error in the information contained in this report. The recipients of this report should rely on their own investigations.