

# Technical Report

## Closing Brief

Markets continued their losing streak for 5th consecutive session and closed in red as the proposed stimulus by finance minister raised doubts on strength of the economy. However, Nifty managed to hold 9850 levels amid a late session rally, value buying and closed at 9872.60 up by 91.80 points or 0.92%.

## Technical Build up

- ❖ Bearish candle with decrease in volume
- ❖ Sell crossover in oscillators.
- ❖ Lower band of Bollinger exist at 9791
- ❖ Crucial moving average of 20/50 SMA are at 9998 and 9953
- ❖ 200 SMA trend deciding level exist at 9244

## Outlook for the day

Indian Equity market started the F&O expiry week on feeble note and lost nearly a percent. Geo-political tension and continued FIIs selling have negative sentiment in the market. Capital Goods, Auto, Pharma, Real Estate, FMCG stocks were major losers. On the technical front, Nifty 'Bearish Belt Hold' pattern indicates that bear are in control. It has been making lower top – lower bottom from last four trading sessions on daily scale and broken its trend line support by connecting the swing lows of 9075, 9448, 9685 and 9900 zones. Momentum oscillators are indicating that the index is unlikely to see any significant upmove in near term. During the day immediate support is seen around 9800-9820 levels and next support is at 9740 levels. Immediate resistance is there around 9960 levels and next resistance is around 10,000 levels. On the option front maximum Put OI is at 9900 followed by 9700 and 9800 strike while maximum Call OI is shifted to 10000 from earlier 10200 strike.

## Technical & Derivative Report

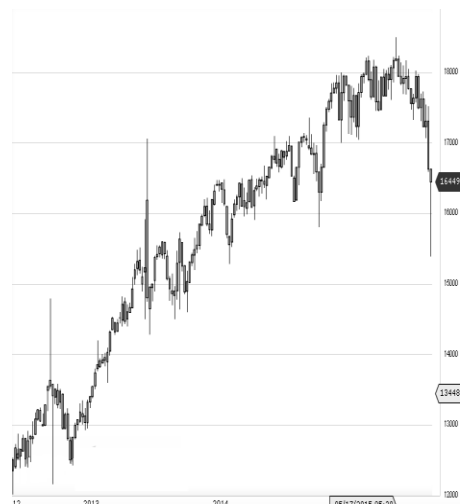
World Indices	LTP	Daily Ch(Pts)	Daily Ch(%)
Dow Jones	22296	-53	-0.24
Nasdaq	6370	-56	-0.88
S&P 500	2496	-5	-0.22
FTSE 100	7301	-9	-0.13
DAX	12594	2	0.02
Hang Seng	27519	19	0.07
Nikkei	20350	-47	-0.23
Sensex	31626	-295	-0.93
Nifty	9872	-91	-0.92

Commodity /Forex	LTP	Daily 1.1Ch(Pts)	Daily Ch(%)
Gold (\$/Oz)	1313.80	2.30	0.18
Silver (\$/Oz)	17.21	0.06	0.37
Copper(USD/lb.)	294.80	1.05	0.36
Brent Crude(USD/bbl)	59.11	0.09	0.15
USD/INR	65.12	0.32	0.50
USD/YEN	111.64	-0.09	-0.08
USD/EUR	1.1858	0.0010	0.08

Support/Resistance levels for Indian Equity Indices					
	S1	S2	CMP	R1	R2
Sensex	31380	31190	31626	31920	32050
Nifty	9800	9740	9872	9960	10000
Nifty (Fut)	9805	9745	9878	9965	10005

Pivot Level	
Sensex	31705
Nifty	9883

**US:** US Market closed lower Monday as declines in technology stocks offset gains in energy stocks. Technically DJIA is presently trading at the 5th leg through Elliot wave count with negative divergence in oscillators.



Increase in OI with Increase in Price (Long Buildup)						Increase in OI with Decrease in Price (Short Buildup)					
Symbol	Prev OI	Curr OI	OI Chg (%)	Curr Pr.	Pr.Chg (%)	Symbol	Prev OI	Curr OI	OI Chg (%)	Curr Pr.	Pr.Chg (%)
UBL	864500	1053500	21.9	861	6.3	INFRATE	5734100	6805100	18.7	388.35	[0.7]
DABUR	0	0	15.7	314	2.8	L	2968800	3522000	18.6	1051.65	[4.9]
YESBAN	3750075	4197200				INDIGO	2939520	3264960			
K	0	0	11.9	361.25	0.2	WIPRO	0	0	11.1	291.1	[1.0]
PETRON	1242000	1385400				CASTRO					
ET	0	0	11.6	228.55	1.4	LIND	8708000	9615200	10.4	365.05	[2.7]
CUMMI						HCLTEC					
NSIND	738000	778800	5.5	898.65	0.6	H	7342300	8033900	9.4	876.1	[1.3]

Nifty declined by 0.92% with Nifty future added 8.9 lakh shares in open interest and stock future added 160.0 Lakh shares in open interest.

- Nifty PCR decreased to 1.12 from 1.24
- Total Nifty Calls added 71.8 lakh shares in open interest.
- Total Nifty Puts shaded 4.4 lakh shares in open interest.
- Maximum open interest (Nifty) in Calls for July series is at 10000 and 9700 put.
- FII's sold net Rs.1249.45 Cr(provisional), while DIIs bought net Rs.1009.98 Cr in cash market.
- FII sold net Rs.174.73 Cr in F&O
- Securities in Ban Period: BEML, DLF, IBREALEST, ICIL, INFIBEAM, JSWENERGY, RCOM & RELCAPITAL

## Nifty Tracker

PARTICULARS	25/09/2017	22/09/2017	21/09/2017	20/09/2017
Spot	9872.6	9964.4	10121.9	10141.15
% Change in Spot	-0.92%	-1.56%	-0.19%	-0.06%
Nifty(FUT) Sep	9878.65	9982.95	10138.85	10167.55
Nifty(FUT) Sep Vol.	171495	163490	118162	52238
Nifty(FUT) Sep - OI	19549275	20471625	20652900	20887125
Nifty(FUT) Oct	9911.75	10021.7	10174.75	10201.25
Nifty(FUT) Oct Vol.	52720	26169	15479	6097
Nifty(FUT) Oct - OI	4400250	2622975	1900650	1312425

## Trade Statistics for 25/09/2017

PARTICULARS	NO. OF CONTRACTS	TURNOVER (RS. CR.)	PUT CALL RATIO
NSE Index Futures	3,15,992	25438	-
NSE Stock Futures	11,08,058	79215	-
NSE Index Options	76,28,682	6,20,968.34	-
NSE Stock Options	6,31,834	50951	0.54
NSE F&O Total Turnover	96,84,566	776,572	0.91
NSE Cash Turnover	-	29,598.00	-
BSE Cash Turnover	-	4690.31	-
Total Turnover	-	810860	-

## FII Corner (F&O)

FII NET BUYING/SELLING & CHANGE IN OPEN INTEREST (Cr. Rupee)						
PARTICULARS	25/09/2017		22/09/2017		21/09/2017	
	Net Buying /Selling	Change In Open interest	Net Buying /Selling	Change In Open interest	Net Buying /Selling	Change In Open interest
Index Future	-722	467	1688	-72	-376	1013
Index option	787	-428	-635	487	306	-409
Stock Future	-238	-1479	-126	-1472	-103	-517
Stock option	-2	-126	-110	-242	-2	263
Total	-175	-1566	817	-1299	-175	350

## Market Open Interest

ADDITION/REDUCTION IN MARKET OPEN INTEREST					
Contracts	25/09/2017	22/09/2017	21/09/2017	20/09/2017	19/09/2017
Index Futures	599	-424	250	381	63
Index Options	-3119	-3806	-146	553	1201
Stock Futures	10500	-18793	14353	4840	6839
Stock Options	-469	464	490	918	754
F&O Total	7511	-22559	14946.3	6691.42	8857.14

## Nifty Option Open Interest Statistics

NIFTY OPTIONS HIGHEST ADDITION IN OPEN INTEREST						
Expiry	Strike	Option Type	Settlement Price	Volume	Open Interest	Change In OI
28-Sep-17	9900	CE	40.25	463253	3937050	2791800
28-Sep-17	10000	CE	13.3	566688	6440775	2285025
28-Sep-17	9950	CE	23.3	148012	1711425	1399275
28-Sep-17	9800	PE	24.15	587469	3734400	622275
28-Sep-17	9850	CE	65.4	48205	624750	594975
28-Sep-17	9700	PE	10	316756	3929400	549525
26-Oct-17	10100	CE	55.85	44727	1338375	508200
26-Oct-17	9700	PE	70.3	43394	3001275	463425
28-Sep-17	9750	PE	14.15	65981	683475	460275
28-Sep-17	9800	CE	100.5	98848	1065150	456750

NIFTY OPTIONS HIGHEST REDUCTION IN OPEN INTEREST						
Expiry	Strike	Option Type	Settlement Price	Volume	Open Interest	Change In OI
28-Sep-17	10000	PE	129	188292	2205525	-1677675
28-Sep-17	9900	PE	61	542518	3235050	-982425
28-Sep-17	10200	CE	1.85	241486	5763600	-680175
28-Sep-17	10300	CE	1	86696	3175800	-664950
28-Sep-17	10100	PE	218.4	38095	820950	-570300
28-Sep-17	10050	PE	171	16589	246600	-446550
28-Sep-17	10100	CE	4.15	387601	5233425	-411000
28-Sep-17	8000	CE	1874.55	5885	1496325	-380175
28-Sep-17	10150	CE	2.65	70959	1401825	-334425
28-Sep-17	9950	PE	90.9	63034	739275	-320775

## Stock Option Open Interest Statistics

STOCK OPTIONS WITH HIGHEST ADDITION IN OPEN INTEREST							
Symbol	Expiry	Strike	Option Type	Settl. Price	Volume	Open Interest	Change in OI
JPASSOCIAT	28-Sep-17	20	CE	0.1	184	8092000	4148000
JPASSOCIAT	28-Sep-17	17.5	CE	0.55	102	5984000	2516000
JPASSOCIAT	28-Sep-17	15	PE	0.15	93	5984000	2040000
SBIN	28-Sep-17	260	CE	2.7	3719	2115000	1722000
JPASSOCIAT	28-Sep-17	22.5	CE	0.05	45	8636000	1700000
SUZLON	26-Oct-17	17.5	CE	0.6	130	6480000	1650000
SUZLON	26-Oct-17	20	CE	0.2	73	6630000	1650000
JPASSOCIAT	26-Oct-17	17.5	CE	1.65	33	1972000	1564000
JPASSOCIAT	28-Sep-17	17.5	PE	1	83	3196000	1156000
DLF	28-Sep-17	170	CE	1.4	538	1160000	1070000

STOCK OPTIONS WITH HIGHEST REDUCTION IN OPEN INTEREST							
Symbol	Expiry	Strike	Option Type	Settl. Price	Volume	Open Int.	Change in OI
SBIN	28-Sep-17	280	CE	0.25	2138	7509000	-1509000
DLF	28-Sep-17	200	CE	0.15	393	6860000	-1110000
SOUTHBANK	28-Sep-17	32.5	CE	0.1	142	10108005	-1060512
DLF	28-Sep-17	190	CE	0.25	347	2515000	-990000
RCOM	28-Sep-17	25	CE	0.05	63	11662000	-882000
BANKBARODA	28-Sep-17	155	CE	0.25	709	1158500	-840000
IDEA	28-Sep-17	75	PE	0.8	654	1799000	-798000
HINDALCO	28-Sep-17	240	CE	0.85	1606	2222500	-773500
BHEL	28-Sep-17	140	CE	0.2	831	6060000	-765000
IDEA	28-Sep-17	85	CE	0.1	257	4410000	-756000

## Research Team

Name	Designation	Email ID	Contact No.
Paras Bothra	President Equity Research	paras@ashikagroup.com	+91 22 6611 1704
Krishna Kumar Agarwal	Equity Research Analyst	krishna.a@ashikagroup.com	+91 33 4036 0646
Partha Mazumder	Equity Research Analyst	partha.m@ashikagroup.com	+91 33 4036 0647
Arijit Malakar	Equity Research Analyst	amalakar@ashikagroup.com	+91 33 4036 0644
Kapil Jagasia	Equity Research Analyst	kapil.j@ashikagroup.com	+91 22 6611 1715
Tirthankar Das	Technical & Derivative Analyst	tirthankar.d@ashikagroup.com	+91 33 4036 0645

Ashika Stock Broking Limited ("ASBL") or Research Entity has started its journey in the year 1994 and is engaged in the business of broking services, depository services, distributor of financial products (Mutual fund, IPO & Bonds). This research report has been prepared and distributed by ASBL in the sole capacity of a Research Analyst (Reg No. INH00000206) of SEBI (Research Analyst) Regulations 2014. ASBL is a wholly owned subsidiary of Ashika Global Securities (P) Ltd., a RBI registered non-deposit taking NBFC Company. Ashika group (details is enumerated on our website [www.ashikagroup.com](http://www.ashikagroup.com)) is an integrated financial service provider inter alia engaged in the business of Investment Banking, Corporate Lending, Commodity Broking, Debt Syndication & Other Advisory Services.

There were no significant and material disciplinary actions against ASBL taken by any regulatory authority during last three years.

### Disclosure

ASBL or its associates, its Research Analysts (including their relatives) may have financial interest in the subject company(ies). However, the said financial interest is not limited to having an open stock market position in /acting as advisor to /having a loan transaction with the subject company(ies) apart from registration as clients.

- ASBL or its Research Analysts (including their relatives) do not have any actual / beneficial ownership of 1% or more of securities of the subject company(ies) at the end of the month immediately preceding the date of publication of this report or date of the public appearance. However ASBL's associates may have actual / beneficial ownership of 1% or more of securities of the subject company(ies).
- ASBL or their Research Analysts (including their relatives) do not have any other material conflict of interest at the time of publication of this research report or date of the public appearance. However ASBL's associates might have an actual / potential conflict of interest (other than ownership).
- ASBL or its associates may have received compensation for investment banking, merchant banking, and brokerage services and for other products and services from the subject companies during the preceding 12 months. However, ASBL or its associates or its Research analysts (forming part of Research Desk) have not received any compensation or other benefits from the subject companies or third parties in connection with the research report. Moreover, Research Analysts have not received any compensation from the companies mentioned herein in the past twelve months.
- ASBL or their Research Analysts have not managed or co-managed public offering of securities for the subject company(ies) in the past twelve months. However ASBL's associates may have managed or co-managed public offering of securities for the subject company(ies) in the past twelve months.
- Research Analysts have not served as an officer, director or employee of the companies mentioned in the report.
- Neither ASBL nor its Research Analysts have been engaged in market making activity for the companies mentioned in the report.

### Disclaimer

The research recommendation and information herein are solely for the personal information of the authorized recipient and does not construe to be an offer documents or any investment, legal or taxation advice or solicitation of any action based upon it. This report is not for public distribution or use by any person or entity, where such distribution, publication, availability or use would be contrary to law, regulation or subject to any registration or licensing requirement. We will not treat recipients as customer by virtue of their receiving this report. The report is based upon the information obtained from public sources that we consider reliable, but we do not guarantee its accuracy or completeness. ASBL shall not be in anyways responsible for any loss or damage that may arise to any such person from any inadvertent error in the information contained in this report. The recipients of this report should rely on their own investigations.