

Technical Report

Closing Brief

On the expiry day markets ended on a flat note, amid volatile session. Nifty index hit its fresh 52-week high of 8,982.15 before settling 12.60 points i.e. 0.14 per cent, higher at 8,939.50. Buying was witnessed in telecom, information technology and a few front line stocks from capital goods and consumer durables

Technical Build up

- ❖ Bullish candle with increase in volume
- ❖ Buy crossover in oscillators.
- ❖ Upper band of Bollinger exist at 8963
- ❖ Crucial moving average of 20/50 SMA are at 8775 and 8451
- ❖ 200 SMA trend deciding level exist at 8420

Outlook for the day

Indian Equity market closed flat on the F&O expiry day amid volatility, ignoring feeble global cues. Participants choose to overlook the latest statement from the US Fed indicating probable rate hike as early as next month. On the technical front, Nifty hit 52-week highs, and is at a short distance from its life time highs indicating its bullishness. Continuous buying from the institutional level might prevent big slide on indices. However overbought nature on daily charts calls for cautious approach and any negative news flow might result in with a knee-jerk reaction on the down side. Supports now is placed at 8800-8850 below it at 8700, while resistance is pegged at psychological level of 9000 and above it at 9100-9150 zone. Hence, for the week we expect Nifty to trade in the range of 8850-9100 zone and use dips to create long positions in the market. On the F&O front Market wide rollover of F&O contracts stood at 77% in line with the 3-months average of 78%. Nifty futures, witnessed 73% rollover, compared to 3-months average of 69%. March series option data depicts highest call concentration at 9000 while highest Put concentration is at 8500.

Technical & Derivative Report

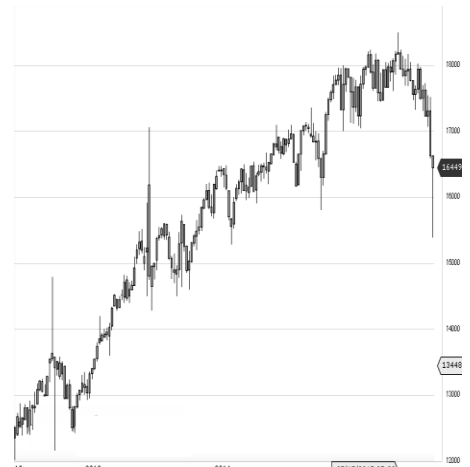
World Indices	LTP	Daily Ch(Pts)	Daily Ch(%)
Dow Jones	20821	11	0.05
Nasdaq	5845	9	0.17
S&P 500	2367	3	0.15
FTSE 100	7243	-27	-0.38
DAX	11804	-143	-1.20
Hang Seng	23979	13	0.06
Nikkei	19046	-236	-1.23
Sensex	28892	28	0.10
Nifty	8939	12	0.14

Commodity /Forex	LTP	Daily Ch(Pts)	Daily Ch(%)
Gold (\$/Oz)	1258.60	0.30	0.02
Silver (\$/Oz)	18.44	0.03	0.16
Copper(USD/lb.)	269.75	0.20	0.07
Brent Crude(USD/bbl)	56.03	0.04	0.07
USD/INR	66.82	-0.14	-0.22
USD/YEN	111.98	-0.14	-0.11
USD/EUR	1.0573	0.0010	0.09

Support/Resistance levels for Indian Equity Indices					
	S1	S2	CMP	R1	R2
Sensex	28790	28690	28892	29030	29175
Nifty	8910	8880	8939	8980	9025
Nifty (Fut)	8915	8885	8942	8985	9030

Pivot Level	
Sensex	28939
Nifty	8949

US: US market closed flat to higher Friday, taking a breath from their most recent run at record levels, while investors awaited President Donald Trump's speech to Congress next week. Technically DJIA is presently trading at the 5th leg through Elliot wave count with negative divergence in oscillators.



Increase in OI with Increase in Price (Long Buildup)						Increase in OI with Decrease in Price (Short Buildup)					
Symbol	Prev OI	Curr OI	OI Chg (%)	Curr Pr.	Pr.Chg (%)	Symbol	Prev OI	Curr OI	OI Chg (%)	Curr Pr.	Pr.Chg (%)
UPL	1833	4739	158.5	720.65	1.3	UBL	730	1598	118.9	789.2	[0.9]
DCBBAN						AJANTP					
K	374	859	129.7	154.1	2.2	HARM	564	1222	116.7	1715.25	[0.6]
TVSMO						NCC	1727	3548	105.4	82.1	[1.5]
TOR	1386	3038	119.2	425.25	0.4	EICHER					
IFCI	1204	2599	115.9	29.8	0.9	MOT	2781	5526	98.7	24905	[0.8]
PCJWE						TATAEL					
LLER	292	599	105.1	379.3	0.1	XSI	1326	2550	92.3	1485	[0.4]

Derivative Report

Technical & Derivative Report

Nifty gained by 0.14% at 8939.50 on the last day of Feb expiry. Nifty gained by 3.91% in Feb expiry against a gain of 6.16% in Jan(expiry to expiry). Nifty started the month with 225 lakh shares in open interest and stock future with 326 lakh shares in open interest.

- Nifty PCR is at 0.91 against 1.00 on the first day of Mar expiry.
- Total Nifty Calls started with 34 lakh shares in open interest against 35 lakh shares in last month.
- Total Nifty Puts started with 32 lakh shares in open interest against 35 lakh shares in last month.
- Maximum open interest (Nifty) in Calls for Feb series is at 9000 and 8900 put.
- FII's bought net Rs.392.33 Cr(provisional), while DIIs sold net Rs.445.04Cr in cash market.
- FII bought net Rs.4712.17 Cr in F&O
- Securities in Ban Period: NIL

Nifty Tracker

PARTICULARS	23/02/2017	22/02/2017	21/02/2017	20/02/2017
Spot	8939.5	8926.9	8907.85	8879.2
% Change in Spot	0.14%	0.21%	0.32%	0.65%
Nifty(FUT) Mar	8942.15	8951.85	8941.65	8904.1
Nifty(FUT) Mar Vol.	185747	85248	115626	42049
Nifty(FUT) Mar - OI	8210025	15359250	11674725	5450550
Nifty(FUT) Apr	8956.15	0	0	0
Nifty(FUT) Apr Vol.	156945	0	0	0
Nifty(FUT) Apr - OI	21830325	0	0	0

Trade Statistics for 23/02/2017

PARTICULARS	NO. OF CONTRACTS	TURNOVER (RS. CR.)	PUT CALL RATIO
NSE Index Futures	5,14,328	37286	-
NSE Stock Futures	16,81,781	1,17,477.92	-
NSE Index Options	1,01,67,289	7,57,240.26	-
NSE Stock Options	6,53,895	46975	0.43
NSE F&O Total Turnover	1,30,17,293	958,979	0.9
NSE Cash Turnover	-	33,124.92	-
BSE Cash Turnover	-	3,278.17	-
Total Turnover	-	995383	-

FII Corner (F&O)

FII NET BUYING/SELLING & CHANGE IN OPEN INTEREST (Cr. Rupee)						
	23/02/2017		22/02/2017		21/02/2017	
PARTICULARS	Net Buying /Selling	Change In Open interest	Net Buying /Selling	Change In Open interest	Net Buying /Selling	Change In Open interest
Index Future	2431	-11757	-272	1805	-1017	2444
Index option	1761	-47500	-2948	2762	-727	2930
Stock Future	37	-18846	306	551	341	2350
Stock option	484	-8917	-151	-3	152	167
Total	4713	-87021	-3065	5116	-1251	7890

Market Open Interest

ADDITION/REDUCTION IN MARKET OPEN INTEREST					
Contracts	23/02/2017	22/02/2017	21/02/2017	20/02/2017	17/02/2017
Index Futures	2100	1302	2017	493	1105
Index Options	2733	-191	2399	4752	2163
Stock Futures	17471	6807	4127	5852	-22660
Stock Options	1032	725	-1099	-150	643
F&O Total	23335	8643	7443.88	10946.69	-18749.04

Nifty Option Open Interest Statistics

NIFTY OPTIONS HIGHEST ADDITION IN OPEN INTEREST						
Expiry	Strike	Option Type	Settlement Price	Volume	Open Interest	Change In OI
30-Mar-17	8400	PE	17.65	35280	2608950	710100
30-Mar-17	8500	PE	25.7	42574	3092700	688200
30-Mar-17	8800	PE	78.35	60935	2970975	609225
30-Mar-17	8600	PE	37.2	48236	2802975	600675
30-Mar-17	9100	CE	69.5	50938	2545950	564000
30-Mar-17	8700	PE	53.85	43522	2465550	529350
30-Mar-17	8900	PE	109.95	54815	2166150	504600
30-Mar-17	9000	CE	110.2	62010	3361050	502725
30-Mar-17	9000	PE	153	35439	1950150	498075
30-Mar-17	8500	CE	471.35	8528	1785675	458550

NIFTY OPTIONS HIGHEST REDUCTION IN OPEN INTEREST						
Expiry	Strike	Option Type	Settlement Price	Volume	Open Interest	Change In OI
27-Apr-17	8600	PE	63	1101	190650	-19275
30-Mar-17	7700	PE	2.4	2585	349275	-19200
27-Apr-17	8200	PE	21.8	893	172050	-5850
30-Mar-17	7900	PE	3.1	3192	428625	-4425
30-Mar-17	7800	PE	2.7	2245	307950	-3300
30-Mar-17	6500	PE	0.75	136	6450	-3000
30-Mar-17	7200	PE	1	88	47175	-225
27-Apr-17	7900	PE	10	24	12225	-75

Stock Option Open Interest Statistics

STOCK OPTIONS WITH HIGHEST ADDITION IN OPEN INTEREST							
Symbol	Expiry	Strike	Option Type	Settl. Price	Volume	Open Interest	Change in OI
JPASSOCIAT	30-Mar-17	17.5	CE	0.65	77	7548000	4080000
JPASSOCIAT	30-Mar-17	15	CE	1.5	78	8024000	3536000
IFCI	30-Mar-17	35	CE	0.5	130	2904000	2244000
IFCI	30-Mar-17	30	CE	1.45	144	2530000	1870000
ICICIBANK	30-Mar-17	300	CE	5.4	1198	4315000	1335000
IFCI	30-Mar-17	32.5	CE	0.8	130	1914000	1320000
GMRINFRA	30-Mar-17	15	PE	0.85	31	3555000	1215000
IFCI	30-Mar-17	30	PE	1.65	64	1474000	1100000
GMRINFRA	30-Mar-17	15	CE	0.85	56	4725000	1080000
IDEA	30-Mar-17	130	CE	5.9	510	1463000	1064000

STOCK OPTIONS WITH HIGHEST REDUCTION IN OPEN INTEREST							
Symbol	Expiry	Strike	Option Type	Settl. Price	Volume	Open Int.	Change in OI
ADANIPOWER	30-Mar-17	32.5	PE	0.4	57	540000	-620000
IDEA	30-Mar-17	110	CE	14.65	173	826000	-539000
RCOM	30-Mar-17	35	CE	3.65	83	1608000	-468000
JPASSOCIAT	30-Mar-17	10	PE	0.1	3	748000	-136000
IDEA	30-Mar-17	115	CE	11.9	293	1099000	-112000
ASHOKLEY	30-Mar-17	110	CE	0.35	40	462000	-84000
RCOM	30-Mar-17	30	PE	0.3	16	396000	-72000
AXISBANK	30-Mar-17	500	CE	36.1	160	378000	-64800
IDEA	30-Mar-17	97.5	PE	1.8	10	175000	-42000
TATAGLOBAL	30-Mar-17	165	CE	0.45	9	549000	-40500

Research Team

Name	Designation	Email ID	Contact No.
Paras Bothra	President Equity Research	paras@ashikagroup.com	+91 22 6611 1704
Krishna Kumar Agarwal	Equity Research Analyst	krishna.a@ashikagroup.com	+91 33 4036 0646
Partha Mazumder	Equity Research Analyst	partha.m@ashikagroup.com	+91 33 4036 0647
Arijit Malakar	Equity Research Analyst	amalakar@ashikagroup.com	+91 33 4036 0644
Kapil Jagasia, CFA	Equity Research Analyst	kapil.j@ashikagroup.com	+91 22 6611 1715
Tirthankar Das	Technical & Derivative Analyst	tirthankar.d@ashikagroup.com	+91 33 4036 0645

SEBI Registration No. INH000000206

Disclosure

The Research Analysts and /or Ashika Stock Broking Limited do hereby certify that all the views expressed in this research report accurately reflect their views about the subject issuer(s) or securities. Moreover, they also certify the followings:-

- The Research Analyst or Ashika Stock Broking Limited or his/its Associates or his/its relative, has any financial interest in the subject company (ies) covered in this report. **Yes**
- The Research Analyst or Ashika Stock Broking Limited or his/its Associates or his/its relative, have actual/beneficial ownership of 1% or more in the subject company, at the end of the month immediately preceding the date of the publication of the research report. **No**
- The Research Analyst or Ashika Stock Broking Limited or his/its Associates or his/its relatives has any material conflict of interest at the time of publication of the research report. **No**
- The Research Analyst or Ashika Stock Broking Limited or his/its Associates have received compensation for investment banking or merchant banking or brokerage services or for product other than for investment banking or merchant banking or brokerage services from the companies covered in this report in the past 12 months. **No**
- The Research Analyst or Ashika Stock Broking Limited or his/its Associates have managed or co managed in the previous 12 months any private or public offering of securities for the company (ies) covered in this report. **No**
- The Research Analyst or Ashika Stock Broking Limited or his/its Associates have received any compensation or other benefits from the company (ies) covered in this report or any third party in connection with the Research Report. **No**
- The Research Analyst has served as an officer, director or employee of the company (ies) covered in the research report. **No**
- The Research Analyst or Ashika Stock Broking Limited has been engaged in Market making activity of the company (ies) covered in the research report. **No**

Disclaimer

This report is for the personal information of the authorized recipient and does not construe to be any investment, legal or taxation advice to you. Ashika Stock Broking Ltd. is not soliciting any action based upon it. This report is not for public distribution and has been furnished to you solely for your information and should not be reproduced or redistributed to any other person in any form. The report is based upon information that we consider reliable, but we do not represent that it is accurate or complete, and it should not be relied upon such. Ashika Stock Broking Ltd. or any of its affiliates or employees shall not be in anyway responsible for any loss or damage that may arise to any person from any inadvertent error in the information contained in this report. Ashika Stock Broking Ltd., or any of its affiliates or employees do not provide, at any time, any express or implied warranty of any kind, regarding any matter pertaining to this report, including without limitation the implied warranties of merchantability, fitness for a particular purpose, and non-infringement. The recipients of this report should rely on their own investigations.