

# Technical Report

## Closing Brief

Benchmark indices started the day on a flat note and soon witnessed profit booking from higher levels which dragged Nifty lower to close the day with a cut of 42.80 points below 8900 mark.

## Technical Build up

- ❖ Bearish candle with increase in volume
- ❖ Buy crossover in oscillators.
- ❖ Upper band of Bollinger exist at 8963
- ❖ Crucial moving average of 20/50 SMA are at 8775 and 8451
- ❖ 200 SMA trend deciding level exist at 8420

## Outlook for the day

Indian Equity market took a breather today and lost nearly half a percent as traders preferred to book some profit. Mixed global cues and profit taking in select index majors pulled the index lower. Investors chose to sit tight ahead of a speech by Donald Trump before the Congress this week and the UP Assembly election results which will be important driver for the market. On the technical front, formed a Bearish candle after six consecutive up session. It failed to surpass psychological 9000 and started to turn lower which is giving an early sign of caution in the market. Continuous buying from the institutional level might prevent big slide on indices and overbought nature on daily charts also reinstates the same. Supports now is placed at 8800-8850 below it at 8700, while resistance is pegged at psychological level of 9000 and above it at 9100-9150 zone. On the F&O front Market wide rollover of F&O contracts stood at 77% in line with the 3-months average of 78%. Nifty futures, witnessed 73% rollover, compared to 3-months average of 69%. March series option data depicts highest call concentration at 9000 while highest Put concentration is at 8500. Incremental built-up was visible in 8700 PE and 8900 CE.

## Technical & Derivative Report

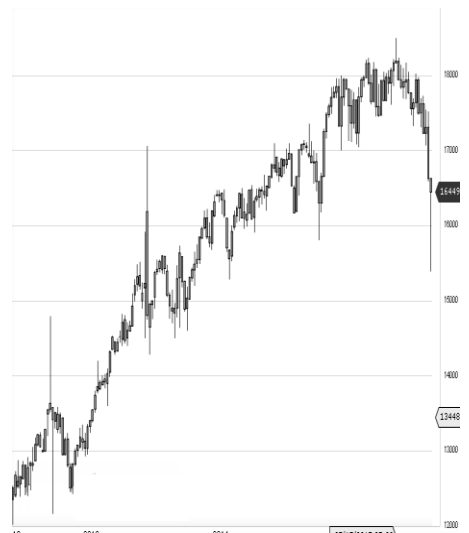
World Indices	LTP	Daily Ch(Pts)	Daily Ch(%)
Dow Jones	20837	15	0.08
Nasdaq	5861	16	0.28
S&P 500	2369	2	0.10
FTSE 100	7253	9	0.13
DAX	11822	18	0.16
Hang Seng	23925	-	-
Nikkei	19232	124	0.65
Sensex	28812	-80	-0.28
Nifty	8896	-42	-0.48

Commodity /Forex	LTP	Daily Ch(Pts)	Daily Ch(%)
Gold (\$/Oz)	1253.80	-5.00	-0.40
Silver (\$/Oz)	18.36	-0.06	-0.34
Copper(USD/lb.)	269.95	0.15	0.06
Brent Crude(USD/bbl)	56.06	0.13	0.23
USD/INR	66.70	-0.11	-0.18
USD/YEN	112.57	-0.13	-0.12
USD/EUR	1.0585	-0.0002	-0.02

Support/Resistance levels for Indian Equity Indices					
	S1	S2	CMP	R1	R2
Sensex	28725	28625	28812	28940	29075
Nifty	8870	8840	8896	8935	8975
Nifty (Fut)	8890	8860	8915	8955	8995

Pivot Level	
Sensex	28855
Nifty	8912

**US:** US market closed slightly higher on Monday as Wall Street looked ahead to a key speech from President Donald Trump. Technically DJIA is presently trading at the 5th leg through Elliot wave count with negative divergence in oscillators.



Increase in OI with Increase in Price (Long Buildup)						Increase in OI with Decrease in Price (Short Buildup)					
Symbol	Prev OI	Curr OI	OI Chg (%)	Curr Pr.	Pr.Chg (%)	Symbol	Prev OI	Curr OI	OI Chg (%)	Curr Pr.	Pr.Chg (%)
WOCKP						ZEEL	5471	6589	20.4	508.8	[2.4]
HARMA	5317	6804	28	761	7.3	L&TFH	1855	2014	8.6	116.3	[0.5]
JINDALS						CANBK	4343	4621	6.4	284.85	[1.0]
TEL	4104	4960	20.9	125.35	7	IOC	4986	5268	5.7	386.55	[0.2]
CEATLT						HINDPE					
D	2402	2887	20.2	1172.3	0.5	TRO	8073	8476	5	540.75	[1.5]
CADILA											
HC	1900	2273	19.6	436.55	1.2						
JPASSO											
CIAT	2201	2596	18	16.3	9.4						

Nifty declined by 0.48% with Nifty future shaded 1.8 lakh shares in open interest and stock future added 1089.6 Lakh shares in open interest.

- Nifty PCR increased to 0.98 from 0.91
- Total Nifty Calls added 192.0 lakh shares in open interest.
- Total Nifty Puts added 213.7 lakh shares in open interest.
- Maximum open interest (Nifty) in Calls for Jan series is at 9000 and 8500 put.
- FII's sold net Rs.145.55 Cr(provisional), while DIIs bought net Rs.263.79 Cr in cash market.
- FII bought net Rs.457.79 Cr in F&O
- Securities in Ban Period: WOCKPHARMA

## Nifty Tracker

PARTICULARS	27/02/2017	23/02/2017	22/02/2017	21/02/2017
Spot	8896.7	8939.5	8926.9	8907.85
% Change in Spot	-0.48%	0.14%	0.21%	0.32%
Nifty(FUT) Mar	8915.75	8942.15	8951.85	8941.65
Nifty(FUT) Mar Vol.	94201	185747	85248	115626
Nifty(FUT) Mar - OI	21364425	8210025	15359250	11674725
Nifty(FUT) Apr	8950.7	8956.15	0	0
Nifty(FUT) Apr Vol.	3935	156945	0	0
Nifty(FUT) Apr - OI	828000	21830325	0	0

## Trade Statistics for 27/02/2017

PARTICULARS	NO. OF CONTRACTS	TURNOVER (RS. CR.)	PUT CALL RATIO
NSE Index Futures	5,14,328	37286	-
NSE Stock Futures	16,81,781	1,17,477.92	-
NSE Index Options	1,01,67,289	7,57,240.26	-
NSE Stock Options	6,53,895	46975	0.43
NSE F&O Total Turnover	1,30,17,293	958,979	0.9
NSE Cash Turnover	-	33,124.92	-
BSE Cash Turnover	-	3,471.88	-
Total Turnover	-	995576	-

## FII Corner (F&O)

FII NET BUYING/SELLING & CHANGE IN OPEN INTEREST (Cr. Rupee)						
PARTICULARS	27/02/2017		23/02/2017		22/02/2017	
	Net Buying /Selling	Change In Open interest	Net Buying /Selling	Change In Open interest	Net Buying /Selling	Change In Open interest
Index Future	-157	-192	2431	-11757	-272	1805
Index option	584	3251	1761	-47500	-2948	2762
Stock Future	-258	115	37	-18846	306	551
Stock option	288	1882	484	-8917	-151	-3
Total	457	5057	4713	-87021	-3065	5116

## Market Open Interest

ADDITION/REDUCTION IN MARKET OPEN INTEREST					
Contracts	27/02/2017	23/02/2017	22/02/2017	21/02/2017	20/02/2017
Index Futures	-11408	2100	1302	2017	493
Index Options	-19661	2733	-191	2399	4752
Stock Futures	-83099	17471	6807	4127	5852
Stock Options	-20961	1032	725	-1099	-150
F&O Total	-135129	23335	8643.24	7443.88	10946.69

## Nifty Option Open Interest Statistics

NIFTY OPTIONS HIGHEST ADDITION IN OPEN INTEREST						
Expiry	Strike	Option Type	Settlement Price	Volume	Open Interest	Change In OI
30-Mar-17	8700	PE	57.85	72976	3063825	598275
30-Mar-17	9000	CE	89	108859	3933000	571950
30-Mar-17	9300	CE	15.2	61706	1975350	551250
30-Mar-17	8500	PE	26.35	47900	3616575	523875
30-Mar-17	8900	CE	136.8	54564	2292975	503850
30-Mar-17	8900	PE	121.75	88402	2627175	461025
30-Mar-17	8600	PE	39.4	59744	3203550	400575
30-Mar-17	9100	CE	53.7	82281	2901750	355800
30-Mar-17	9400	CE	7.4	33612	1673025	287400
30-Mar-17	9200	CE	29.65	80946	2663775	281400

NIFTY OPTIONS HIGHEST REDUCTION IN OPEN INTEREST						
Expiry	Strike	Option Type	Settlement Price	Volume	Open Interest	Change In OI
30-Mar-17	8700	CE	269.35	3394	1451325	-48525
30-Mar-17	8300	CE	625.25	733	1157625	-45225
30-Mar-17	8600	CE	350.45	1559	1102575	-45150
30-Mar-17	7000	PE	0.85	351	331950	-9150
30-Mar-17	7000	CE	1900.4	161	649275	-7050
27-Apr-17	7900	PE	9.35	134	6600	-5625
30-Mar-17	8400	CE	528.05	569	920850	-5325
30-Mar-17	6500	CE	2394.15	42	203400	-3075
30-Mar-17	8650	CE	304.35	124	4425	-2850
30-Mar-17	7400	PE	1	145	60450	-2625

## Stock Option Open Interest Statistics

STOCK OPTIONS WITH HIGHEST ADDITION IN OPEN INTEREST							
Symbol	Expiry	Strike	Option Type	Settl. Price	Volume	Open Interest	Change in OI
JPASSOCIAT	30-Mar-17	17.5	CE	1.05	957	22168000	14620000
JPASSOCIAT	30-Mar-17	20	CE	0.45	893	18088000	14416000
JPASSOCIAT	30-Mar-17	22.5	CE	0.2	325	9044000	7072000
JPASSOCIAT	30-Mar-17	15	PE	0.8	157	6800000	5916000
GMRINFRA	30-Mar-17	17.5	CE	0.4	665	11160000	5625000
JPASSOCIAT	30-Mar-17	10	PE	0.05	110	6324000	5576000
GMRINFRA	30-Mar-17	20	CE	0.15	362	7290000	4365000
JPASSOCIAT	30-Mar-17	12.5	PE	0.25	134	5236000	3944000
JPASSOCIAT	30-Mar-17	15	CE	2.2	294	11900000	3876000
IFCI	30-Mar-17	32.5	CE	0.65	217	4730000	2816000

STOCK OPTIONS WITH HIGHEST REDUCTION IN OPEN INTEREST							
Symbol	Expiry	Strike	Option Type	Settl. Price	Volume	Open Int.	Change in OI
NMDC	30-Mar-17	180	CE	0.15	240	114000	-642000
NTPC	30-Mar-17	192.5	CE	0.3	332	376000	-436000
JINDALSTEL	30-Mar-17	120	CE	10.5	462	801000	-243000
RELIANCE	30-Mar-17	1200	CE	60.8	3571	603500	-237000
TATAGLOBAL	30-Mar-17	165	CE	0.3	124	315000	-234000
TATAPOWER	30-Mar-17	97.5	CE	0.25	58	288000	-225000
TV18BRDCST	30-Mar-17	35	PE	0.15	28	221000	-204000
IDFCBANK	30-Mar-17	50	PE	0.1	21	128000	-168000
UNIONBANK	30-Mar-17	150	CE	3.95	501	728000	-144000
ADANIPOWER	30-Mar-17	32.5	PE	0.3	14	440000	-100000

## Research Team

Name	Designation	Email ID	Contact No.
Paras Bothra	President Equity Research	paras@ashikagroup.com	+91 22 6611 1704
Krishna Kumar Agarwal	Equity Research Analyst	krishna.a@ashikagroup.com	+91 33 4036 0646
Partha Mazumder	Equity Research Analyst	partha.m@ashikagroup.com	+91 33 4036 0647
Arijit Malakar	Equity Research Analyst	amalakar@ashikagroup.com	+91 33 4036 0644
Kapil Jagasia, CFA	Equity Research Analyst	kapil.j@ashikagroup.com	+91 22 6611 1715
Tirthankar Das	Technical & Derivative Analyst	tirthankar.d@ashikagroup.com	+91 33 4036 0645

SEBI Registration No. INH000000206

### Disclosure

The Research Analysts and /or Ashika Stock Broking Limited do hereby certify that all the views expressed in this research report accurately reflect their views about the subject issuer(s) or securities. Moreover, they also certify the followings:-

- The Research Analyst or Ashika Stock Broking Limited or his/its Associates or his/its relative, has any financial interest in the subject company (ies) covered in this report. **Yes**
- The Research Analyst or Ashika Stock Broking Limited or his/its Associates or his/its relative, have actual/beneficial ownership of 1% or more in the subject company, at the end of the month immediately preceding the date of the publication of the research report. **No**
- The Research Analyst or Ashika Stock Broking Limited or his/its Associates or his/its relatives has any material conflict of interest at the time of publication of the research report. **No**
- The Research Analyst or Ashika Stock Broking Limited or his/its Associates have received compensation for investment banking or merchant banking or brokerage services or for product other than for investment banking or merchant banking or brokerage services from the companies covered in this report in the past 12 months. **No**
- The Research Analyst or Ashika Stock Broking Limited or his/its Associates have managed or co managed in the previous 12 months any private or public offering of securities for the company (ies) covered in this report. **No**
- The Research Analyst or Ashika Stock Broking Limited or his/its Associates have received any compensation or other benefits from the company (ies) covered in this report or any third party in connection with the Research Report. **No**
- The Research Analyst has served as an officer, director or employee of the company (ies) covered in the research report. **No**
- The Research Analyst or Ashika Stock Broking Limited has been engaged in Market making activity of the company (ies) covered in the research report. **No**

### Disclaimer

This report is for the personal information of the authorized recipient and does not construe to be any investment, legal or taxation advice to you. Ashika Stock Broking Ltd. is not soliciting any action based upon it. This report is not for public distribution and has been furnished to you solely for your information and should not be reproduced or redistributed to any other person in any form. The report is based upon information that we consider reliable, but we do not represent that it is accurate or complete, and it should not be relied upon such. Ashika Stock Broking Ltd. or any of its affiliates or employees shall not be in anyway responsible for any loss or damage that may arise to any person from any inadvertent error in the information contained in this report. Ashika Stock Broking Ltd., or any of its affiliates or employees do not provide, at any time, any express or implied warranty of any kind, regarding any matter pertaining to this report, including without limitation the implied warranties of merchantability, fitness for a particular purpose, and non-infringement. The recipients of this report should rely on their own investigations.