

# Technical Report

## Closing Brief

Nifty began the expiry week on a volatile note after it staged a gap down opening. The Index gyrated in a band of 50 points during the day to end at 9045.25, down 0.69% for the day.

## Technical Build up

- ❖ Bearish candle with increase in volume
- ❖ Sell crossover in oscillators.
- ❖ Upper band of Bollinger exist at 9173
- ❖ Crucial moving average of 20/50 SMA are at 8980 and 8738
- ❖ 200 SMA trend deciding level exist at 8508

## Outlook for the day

Indian Equity market lost over half a percent in a volatile day as feeble cues on both the domestic and global front triggered weak start and further deteriorated as the session progressed following Donald Trump's failure to push through his key health care legislation hence raised doubts whether he will be able to push through tax reforms and mega-spending packages. On the technical front, Nifty formed a bearish candle following an indecisive doji candle indicates that bulls might be losing grip. However crucial support level from lower end i.e. through 20dma and the previous swing high followed by the unfilled gap created around 8975 would provide some assistance for the market to hold. Hence it can be concluded that amid lack of directional triggers the index will consolidate in the broad range of 8950 and 9250 in the short-term amid stock specific action. On the option front data shows Call writing in the range of 9000-9250 level while highest Call congestion is at 9200. Immediate option concentration is giving the trading range of 8950-9160.

## Technical & Derivative Report

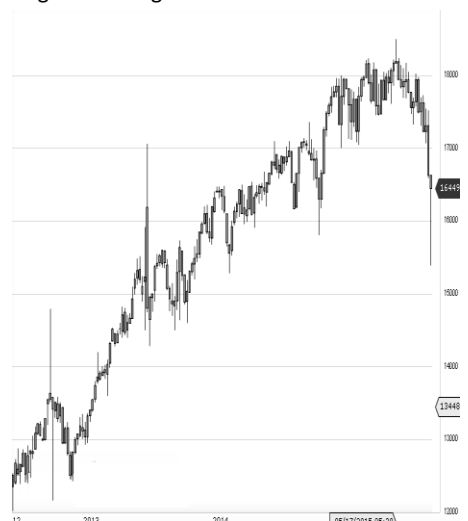
World Indices	LTP	Daily Ch(Pts)	Daily Ch(%)
Dow Jones	20550	-45	-0.22
Nasdaq	5840	11	0.20
S&P 500	2341	-2	-0.1
FTSE 100	7293	-43	-0.59
DAX	11996	-68	-0.57
Hang Seng	24332	129	0.53
Nikkei	19168	183	0.93
Sensex	29237	-184	-0.63
Nifty	9045	-62	-0.69

Commodity /Forex	LTP	Daily Ch(Pts)	Daily Ch(%)
Gold (\$/Oz)	1257.40	-1.40	-0.11
Silver (\$/Oz)	18.06	-0.05	-0.27
Copper(USD/lb.)	262.95	-0.25	-0.09
Brent Crude(USD/bbl)	50.89	0.14	0.28
USD/INR	65.04	-0.37	-0.57
USD/YEN	110.61	-0.05	-0.05
USD/EUR	1.0865	0.0001	0.01

Support/Resistance levels for Indian Equity Indices					
	S1	S2	CMP	R1	R2
Sensex	29080	29000	29237	29370	29500
Nifty	9000	8975	9045	9085	9125
Nifty (Fut)	9025	9000	9067	9110	9150

Pivot Level	
Sensex	29273
Nifty	9054

**US:** US market closed mostly lower on Monday as investors reassessed the prospects of key White House proposals, including tax reform, coming to fruition. Technically DJIA is presently trading at the 5th leg through Elliot wave count with negative divergence in oscillators.



Increase in OI with Increase in Price (Long Buildup)						Increase in OI with Decrease in Price (Short Buildup)					
Symbol	Prev OI	Curr OI	OI Chg (%)	Curr Pr.	Pr.Chg (%)	Symbol	Prev OI	Curr OI	OI Chg (%)	Curr Pr.	Pr.Chg (%)
PETRON ET	3610	4059	12.4	407.95	3	HINDUN ILVR	13690	16922	23.6	899.5	[0.2]
BHARTI ARTL	22981	25468	10.8	340.9	0.1	TATAST EEL	9789	11727	19.8	477.25	[3.4]
POWER GRID	7114	7847	10.3	195.95	0.9	CAIRN	7739	9078	17.3	292.45	[1.6]
LICHSGF IN	5018	5448	8.6	609	1.3	TECHM	9898	11389	15.1	468.85	[1.4]
IGL	2079	2248	8.1	1018.5	1.1	HCLTEC H	11411	13054	14.4	854.6	[2.0]

Nifty declined by 0.69% with Nifty future added 0.5 lakh shares in open interest and stock future added 1204.3 Lakh shares in open interest.

- Nifty PCR decreased to 1.03 from 1.06
- Total Nifty Calls added 29.5 lakh shares in open interest.
- Total Nifty Puts added 11.7 lakh shares in open interest.
- Maximum open interest (Nifty) in Calls for Jan series is at 9200 and 8800 put.
- FII's bought net Rs. 577.88 Cr(provisional), while DIIs sold net Rs.594.48 Cr in cash market.
- FII sold net Rs.1295.45 Cr in F&O
- Securities in Ban Period: BHARATFIN, CEATLTD, IBREALEST, IFCI, JINDALSTEL, JPASSOCIAT, JSWENERGY, ORIENTBANK, TV18BRDCAST & WOOCKPHARMA

## Nifty Tracker

PARTICULARS	27/03/2017	24/03/2017	23/03/2017	22/03/2017
Spot	9045.2	9108	9086.3	9030.45
% Change in Spot	-0.69%	0.24%	0.62%	-1.00%
Nifty(FUT) Mar	9067.95	9118.3	9107.65	9050.4
Nifty(FUT) Mar Vol.	171644	93896	97203	142176
Nifty(FUT) Mar - OI	21382200	25783575	26220675	26185950
Nifty(FUT) Apr	9101.55	9150.5	9135.85	9078.9
Nifty(FUT) Apr Vol.	85700	20354	10980	12796
Nifty(FUT) Apr - OI	10119450	5711475	5296350	4975650

## Trade Statistics for 27/03/2017

PARTICULARS	NO. OF CONTRACTS	TURNOVER (RS. CR.)	PUT CALL RATIO
NSE Index Futures	3,35,315	24031	-
NSE Stock Futures	10,28,024	72913	-
NSE Index Options	51,77,977	3,82,832.86	-
NSE Stock Options	4,67,951	34387	0.51
NSE F&O Total Turnover	70,09,267	514,164	0.84
NSE Cash Turnover	-	26,834.84	-
BSE Cash Turnover	-	8810.2	-
Total Turnover	-	549809	-

## FII Corner (F&O)

FII NET BUYING/SELLING & CHANGE IN OPEN INTEREST (Cr. Rupee)						
PARTICULARS	27/03/2017		24/03/2017		23/03/2017	
	Net Buying /Selling	Change In Open interest	Net Buying /Selling	Change In Open interest	Net Buying /Selling	Change In Open interest
Index Future	-488	944	-316	-304	101	531
Index option	140	-794	714	1528	707	950
Stock Future	-1029	2756	-81	308	-232	949
Stock option	81	96	-36	113	9	138
Total	-1296	3001	281	1645	585	2567

## Market Open Interest

ADDITION/REDUCTION IN MARKET OPEN INTEREST					
Contracts	27/03/2017	24/03/2017	23/03/2017	22/03/2017	21/03/2017
Index Futures	-31	227	569	66	254
Index Options	2413	698	1988	-243	823
Stock Futures	5835	-18854	10941	6786	3518
Stock Options	667	-641	743	1201	1103
F&O Total	8884	-18570	14240.83	7809.94	5698.17

## Nifty Option Open Interest Statistics

NIFTY OPTIONS HIGHEST ADDITION IN OPEN INTEREST						
Expiry	Strike	Option Type	Settlement Price	Volume	Open Interest	Change In OI
30-Mar-17	9100	CE	29.05	494388	5642100	1485600
30-Mar-17	9050	CE	51.4	79972	1391325	1003575
27-Apr-17	8900	PE	54.65	22522	1904025	436425
30-Mar-17	9000	CE	85.55	170249	2465175	402825
30-Mar-17	8950	PE	9.6	96125	1231875	364050
30-Mar-17	9000	PE	19.4	367292	5136975	351975
30-Mar-17	9200	CE	7.05	378459	6981525	341475
27-Apr-17	9400	CE	23.25	22810	1374825	281550
27-Apr-17	9000	PE	82	22510	2188350	273825
30-Mar-17	9250	CE	2.65	79842	1637550	251025

NIFTY OPTIONS HIGHEST ADDITION IN OPEN INTEREST						
Expiry	Strike	Option Type	Settlement Price	Volume	Open Interest	Change In OI
30-Mar-17	9100	PE	60.15	287707	3151875	-1117725
30-Mar-17	9400	CE	0.75	38611	2555550	-388275
30-Mar-17	9300	CE	1.4	206551	3859575	-300900
30-Mar-17	9350	CE	1.05	15314	603300	-265725
30-Mar-17	9150	PE	93.9	18064	362850	-258150
30-Mar-17	9150	CE	14.7	143746	1642950	-253050
30-Mar-17	9200	PE	134.8	40098	729525	-190500
30-Mar-17	8800	PE	2.4	107774	5255025	-145125
30-Mar-17	10000	PE	925.55	2971	772875	-141300
30-Mar-17	8600	PE	0.9	16033	1905000	-119925

## Stock Option Open Interest Statistics

STOCK OPTIONS WITH HIGHEST ADDITION IN OPEN INTEREST							
Symbol	Expiry	Strike	Option Type	Settl. Price	Volume	Open Interest	Change in OI
HINDALCO	30-Mar-17	190	CE	2.35	2599	3976000	2194500
IDEA	30-Mar-17	90	CE	1	2942	4907000	1799000
FEDERALBNK	30-Mar-17	90	CE	1.95	915	9284000	1672000
SOUTHBANK	30-Mar-17	22.5	CE	0.05	70	7589289	1657050
PNB	30-Mar-17	140	PE	0.95	1421	4347000	1337000
VEDL	30-Mar-17	270	CE	1.4	2566	6622000	1302000
PNB	30-Mar-17	145	PE	2.7	752	2065000	1253000
SAIL	30-Mar-17	62.5	CE	0.3	297	3444000	1080000
SBIN	30-Mar-17	275	PE	1.95	2539	2775000	1080000
HINDALCO	30-Mar-17	195	CE	1.05	3145	3720500	1022000

STOCK OPTIONS WITH HIGHEST REDUCTION IN OPEN INTEREST							
Symbol	Expiry	Strike	Option Type	Settl. Price	Volume	Open Int.	Change in OI
IDEA	30-Mar-17	90	PE	3.1	1529	2912000	-2037000
JPASSOCIAT	30-Mar-17	15	CE	0.05	18	14756000	-1088000
GMRINFRA	30-Mar-17	17.5	CE	0.05	114	19440000	-1080000
IDEA	30-Mar-17	115	CE	0.05	459	9457000	-1029000
SBIN	30-Mar-17	275	CE	6.5	1602	2709000	-975000
IDEA	30-Mar-17	120	CE	0.05	496	20272000	-896000
ICICIBANK	30-Mar-17	270	PE	1.45	2772	3005000	-880000
SINTEX	30-Mar-17	100	CE	4.65	150	2401125	-684000
PFC	30-Mar-17	150	CE	0.2	275	2652000	-672000
JINDALSTEL	30-Mar-17	85	PE	0.05	67	333000	-603000

## Research Team

Name	Designation	Email ID	Contact No.
Paras Bothra	President Equity Research	paras@ashikagroup.com	+91 22 6611 1704
Krishna Kumar Agarwal	Equity Research Analyst	krishna.a@ashikagroup.com	+91 33 4036 0646
Partha Mazumder	Equity Research Analyst	partha.m@ashikagroup.com	+91 33 4036 0647
Arijit Malakar	Equity Research Analyst	amalakar@ashikagroup.com	+91 33 4036 0644
Kapil Jagasia, CFA	Equity Research Analyst	kapil.j@ashikagroup.com	+91 22 6611 1715
Tirthankar Das	Technical & Derivative Analyst	tirthankar.d@ashikagroup.com	+91 33 4036 0645

SEBI Registration No. INH000000206

### Disclosure

The Research Analysts and /or Ashika Stock Broking Limited do hereby certify that all the views expressed in this research report accurately reflect their views about the subject issuer(s) or securities. Moreover, they also certify the followings:-

- The Research Analyst or Ashika Stock Broking Limited or his/its Associates or his/its relative, has any financial interest in the subject company (ies) covered in this report. **Yes**
- The Research Analyst or Ashika Stock Broking Limited or his/its Associates or his/its relative, have actual/beneficial ownership of 1% or more in the subject company, at the end of the month immediately preceding the date of the publication of the research report. **No**
- The Research Analyst or Ashika Stock Broking Limited or his/its Associates or his/its relatives has any material conflict of interest at the time of publication of the research report. **No**
- The Research Analyst or Ashika Stock Broking Limited or his/its Associates have received compensation for investment banking or merchant banking or brokerage services or for product other than for investment banking or merchant banking or brokerage services from the companies covered in this report in the past 12 months. **No**
- The Research Analyst or Ashika Stock Broking Limited or his/its Associates have managed or co managed in the previous 12 months any private or public offering of securities for the company (ies) covered in this report. **No**
- The Research Analyst or Ashika Stock Broking Limited or his/its Associates have received any compensation or other benefits from the company (ies) covered in this report or any third party in connection with the Research Report. **No**
- The Research Analyst has served as an officer, director or employee of the company (ies) covered in the research report. **No**
- The Research Analyst or Ashika Stock Broking Limited has been engaged in Market making activity of the company (ies) covered in the research report. **No**

### Disclaimer

This report is for the personal information of the authorized recipient and does not construe to be any investment, legal or taxation advice to you. Ashika Stock Broking Ltd. is not soliciting any action based upon it. This report is not for public distribution and has been furnished to you solely for your information and should not be reproduced or redistributed to any other person in any form. The report is based upon information that we consider reliable, but we do not represent that it is accurate or complete, and it should not be relied upon such. Ashika Stock Broking Ltd. or any of its affiliates or employees shall not be in anyway responsible for any loss or damage that may arise to any person from any inadvertent error in the information contained in this report. Ashika Stock Broking Ltd., or any of its affiliates or employees do not provide, at any time, any express or implied warranty of any kind, regarding any matter pertaining to this report, including without limitation the implied warranties of merchantability, fitness for a particular purpose, and non-infringement. The recipients of this report should rely on their own investigations.