

Technical Report

Closing Brief

Benchmark indices in yesterday's session gave a strong opening in the morning, but as the day progressed, during the last hour of the trade, the indices witnessed some selling pressure and finally closed on a flat note. Nifty finally closed at 10,020.55 levels down by -0.10 points with no change in percentage terms.

Technical Build up

- ❖ Doji candle with decrease in volume
- ❖ Buy crossover in oscillators.
- ❖ Upper band of Bollinger exist at 10070
- ❖ Crucial moving average of 20/50 SMA are at 9761 and 9650
- ❖ 200 SMA trend deciding level exist at 8917

Outlook for the day

Indian Equity market ended almost flat on the F&O expiry day amid volatility, taking a breather after the recent up move. Late selling in blue-chips like Reliance Industries, ITC, Infosys, TCS and Bharti Airtel dragged down the index from the record level to close flat. On the technical front, Nifty formed bearish 'Shooting Star' candle when the index closes below the opening level after a strong bullish candle the previous day is not a welcome sign for the bulls. Going forward, immediate support is placed around 9970 levels and the next support is placed around 9920 levels. On the higher side the immediate resistance is placed around 10070 levels and the next resistance is placed around 10,100 levels. On the option front maximum Call OI stands at strike price of 10100 followed by 10200, while maximum Put OI was seen at strike price 10100 followed by 9900. Rollover data that market-wide rollovers came in at 80%, which was tad higher than average rollovers of 78% of the past three series. Nifty rollovers came in at 68%, which was tad lower than average rollovers of 69% of the past three series.

Technical & Derivative Report

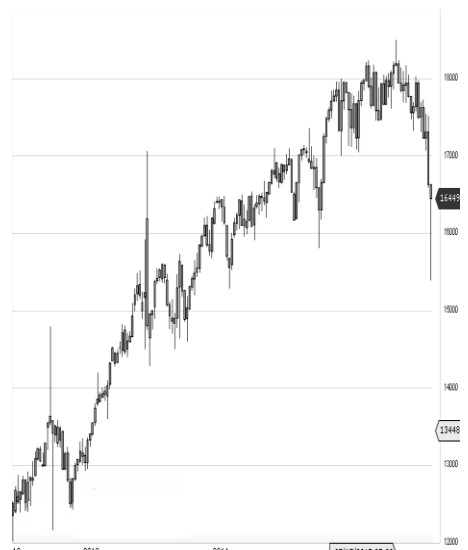
World Indices	LTP	Daily Ch(Pts)	Daily Ch(%)
Dow Jones	21796	85	0.39
Nasdaq	6382	-40	-0.63
S&P 500	2475	-2	0.10
FTSE 100	7443	-9	-0.12
DAX	12212	-93	-0.76
Hang Seng	27019	-111	-0.41
Nikkei	19983	-96	-0.48
Sensex	32383	0.84	-
Nifty	10020	0.10	-

Commodity /Forex	LTP	Daily Ch(Pts)	Daily Ch(%)
Gold (\$/Oz)	1264.90	-1.60	-0.13
Silver (\$/Oz)	16.56	-0.02	-0.11
Copper(USD/lb.)	287.30	-0.45	-0.16
Brent Crude(USD/bbl)	51.44	-0.05	-0.10
USD/INR	64.10	-0.25	-0.40
USD/YEN	111.15	-0.11	-0.10
USD/EUR	1.1682	0.0005	0.04

Support/Resistance levels for Indian Equity Indices					
	S1	S2	CMP	R1	R2
Sensex	32215	32050	32383	32550	32650
Nifty	9970	9920	10020	10070	10100
Nifty (Fut)	10010	9960	10063	10110	10140

Pivot Level		
Sensex		32460
Nifty		10046

US: US market closed mixed on Thursday after the technology sector rolled over. Technically DJIA is presently trading at the 5th leg through Elliot wave count with negative divergence in oscillators.



Increase in OI with Increase in Price (Long Buildup)					
Symbol	Prev OI	Curr OI	OI Chg (%)	Curr Pr.	Pr.Chg (%)
CONCO	291250	805000	176.4	1170.5	[0.9]
SREINFR	2845000	7855000	176.1	120.3	[4.0]
REPCOH	112700	287700	155.3	778	[1.4]
POWER	3284000	7796000	137.4	218.2	[0.2]
GRID	1375500	3138000	128.1	530.2	[2.1]

Increase in OI with Decrease in Price (Short Buildup)					
Symbol	Prev OI	Curr OI	OI Chg (%)	Curr Pr.	Pr.Chg (%)
TATAEL	489600	1309200	167.4	1756.85	4
MGL	307200	733800	138.9	988.35	0.2
IBREALE	1956000	4385000			
ST	0	0	124.2	228.2	0.9
HINDUN	3905400	8531400	118.5	1172	0.2
ILVR	29700	64500	117.2	3636.85	0

Nifty closed at 10020.55, almost flat on the last day of July expiry. Nifty gained by 5.43% in July expiry against a decline of 0.06% in June(expiry to expiry). Nifty started the month with 251 lakh shares in open interest and stock future with 507 lakh shares in open interest.

- Nifty PCR is at 1.66 against 1.01 on the first day of Aug expiry.
- Total Nifty Calls started with 65 lakh shares in open interest against 30 lakh shares in last month.
- Total Nifty Puts started with 108 lakh shares in open interest against 31 lakh shares in last month.
- Maximum open interest (Nifty) in Calls for Aug series is at 10100 and 10000 put.
- FII's bought net Rs.1869.92 Cr(provisional), while DIIs sold net Rs.660.03 Cr in cash market.
- FII sold net Rs.408.78 Cr in F&O
- Securities in Ban Period: IBREALEST

Nifty Tracker

PARTICULARS	27/07/2017	26/07/2017	25/07/2017	24/07/2017
Spot	10020.55	10020.65	9964.55	9966.4
% Change in Spot	0.00%	0.56%	-0.02%	0.52%
Nifty(FUT) Aug	10063.45	10065	10013.8	9994.55
Nifty(FUT) Aug Vol.	180853	79146	48336	42444
Nifty(FUT) Aug - OI	16468650	11505300	8552550	6233175
Nifty(FUT) Sep	10093.95	0	0	0
Nifty(FUT) Sep Vol.	6059	0	0	0
Nifty(FUT) Sep - OI	749550	0	0	0

Trade Statistics for 27/07/2017

PARTICULARS	NO. OF CONTRACTS	TURNOVER (RS. CR.)	PUT CALL RATIO
NSE Index Futures	5,95,581	49581	-
NSE Stock Futures	21,17,869	1,53,978.85	-
NSE Index Options	1,36,75,327	11,80,153.61	-
NSE Stock Options	8,99,548	70371	0.49
NSE F&O Total Turnover	1,72,88,325	1,454,084	1.11
NSE Cash Turnover	-	40,106.50	-
BSE Cash Turnover	-	3,976.81	-
Total Turnover	-	1498167	-

FII Corner (F&O)

FII NET BUYING/SELLING & CHANGE IN OPEN INTEREST (Cr. Rupee)						
PARTICULARS	27/07/2017		26/07/2017		25/07/2017	
	Net Buying /Selling	Change In Open interest	Net Buying /Selling	Change In Open interest	Net Buying /Selling	Change In Open interest
Index Future	2097	-11140	-801	1488	-998	1395
Index option	-2062	-33047	1763	3257	520	1642
Stock Future	-610	-12248	698	1118	282	332
Stock option	167	-8540	-8	-205	-86	88
Total	-408	-64976	1652	5658	-282	3456

Market Open Interest

ADDITION/REDUCTION IN MARKET OPEN INTEREST					
Contracts	27/07/2017	26/07/2017	25/07/2017	24/07/2017	21/07/2017
Index Futures	-189	1785	535	1139	373
Index Options	5380	1098	1131	2140	-788
Stock Futures	10049	4394	7289	9175	-25713
Stock Options	1017	-616	423	384	-441
F&O Total	16258	6661	9377.91	12838.27	-26569.29

Nifty Option Open Interest Statistics

NIFTY OPTIONS HIGHEST ADDITION IN OPEN INTEREST						
Expiry	Strike	Option Type	Settlement Price	Volume	Open Interest	Change In OI
31-Aug-17	10300	CE	34.55	82420	2306550	1234275
31-Aug-17	10200	CE	63.1	78145	2531550	1040175
31-Aug-17	10000	PE	101.05	108097	3682950	1013475
31-Aug-17	10400	CE	17.7	67640	1538775	845925
31-Aug-17	10100	PE	141.3	60572	1107375	822600
31-Aug-17	9800	PE	49.75	80709	3836550	820800
31-Aug-17	10500	CE	8.65	65815	1855275	772875
31-Aug-17	11000	CE	1.35	25153	1211400	722250
31-Aug-17	10100	CE	104.95	72222	2648625	634425
31-Aug-17	9700	PE	34.45	66888	2844750	599925

NIFTY OPTIONS HIGHEST REDUCTION IN OPEN INTEREST						
Expiry	Strike	Option Type	Settlement Price	Volume	Open Interest	Change In OI
28-Sep-17	9300	PE	24.9	1337	193050	-45075
28-Dec-17	8500	PE	31	1245	656050	-22275
28-Dec-17	8000	PE	19.55	467	700500	-14250
31-Aug-17	9400	CE	665.4	2057	253650	-12375
31-Aug-17	9500	PE	17.9	33662	2340750	-9525
28-Sep-17	10000	CE	238.3	1709	425100	-5475
31-Aug-17	9750	PE	42.2	2920	97575	-3525
28-Dec-17	9500	CE	819.8	596	1018425	-3000
28-Sep-17	9800	CE	375.95	472	118650	-2700
28-Dec-17	11000	PE	801.75	157	218775	-2175

Stock Option Open Interest Statistics

STOCK OPTIONS WITH HIGHEST ADDITION IN OPEN INTEREST							
Symbol	Expiry	Strike	Option Type	Settl. Price	Volume	Open Interest	Change in OI
SUZLON	31-Aug-17	22.5	CE	0.5	516	14340000	7260000
GMRINFRA	31-Aug-17	20	CE	1.15	201	7335000	6210000
SUZLON	31-Aug-17	20	CE	1.1	787	18060000	5970000
GMRINFRA	31-Aug-17	22.5	CE	0.45	141	4590000	4275000
ICICIBANK	31-Aug-17	310	CE	12.55	2115	4523750	3470500
GMRINFRA	31-Aug-17	20	PE	1.55	73	3600000	2970000
SUZLON	31-Aug-17	25	CE	0.2	140	5730000	2430000
SUZLON	31-Aug-17	20	PE	1.1	123	5910000	2280000
ICICIBANK	31-Aug-17	340	CE	3.25	1375	2158750	1919500
GMRINFRA	31-Aug-17	25	CE	0.2	60	2160000	1890000

STOCK OPTIONS WITH HIGHEST REDUCTION IN OPEN INTEREST							
Symbol	Expiry	Strike	Option Type	Settl. Price	Volume	Open Int.	Change in OI
BHARATFIN	31-Aug-17	800	CE	50.25	407	81000	-146000
ICICIBANK	31-Aug-17	300	CE	17.85	268	935000	-134750
FORTIS	31-Aug-17	140	PE	1.4	37	32400	-83700
JPASSOCIAT	31-Aug-17	22.5	PE	0.4	3	408000	-68000
ICICIBANK	31-Aug-17	318.2	CE	9.4	42	74250	-63250
PNB	31-Aug-17	150	CE	15.3	21	70000	-59500
YESBANK	31-Aug-17	1720	CE	98.3	466	35000	-57750
HDFCBANK	31-Aug-17	1740	CE	57.35	411	76500	-56000
NHPC	31-Aug-17	27.5	PE	0.1	11	135000	-54000
YESBANK	31-Aug-17	1700	CE	113.25	754	150850	-51800

Research Team

Name	Designation	Email ID	Contact No.
Paras Bothra	President Equity Research	paras@ashikagroup.com	+91 22 6611 1704
Krishna Kumar Agarwal	Equity Research Analyst	krishna.a@ashikagroup.com	+91 33 4036 0646
Partha Mazumder	Equity Research Analyst	partha.m@ashikagroup.com	+91 33 4036 0647
Arijit Malakar	Equity Research Analyst	amalakar@ashikagroup.com	+91 33 4036 0644
Kapil Jagasia, CFA	Equity Research Analyst	kapil.j@ashikagroup.com	+91 22 6611 1715
Tirthankar Das	Technical & Derivative Analyst	tirthankar.d@ashikagroup.com	+91 33 4036 0645

Ashika Stock Broking Limited ("ASBL") or Research Entity has started its journey in the year 1994 and is engaged in the business of broking services, depository services, distributor of financial products (Mutual fund, IPO & Bonds). This research report has been prepared and distributed by ASBL in the sole capacity of a Research Analyst (Reg No. INH00000206) of SEBI (Research Analyst) Regulations 2014. ASBL is a wholly owned subsidiary of Ashika Global Securities (P) Ltd., a RBI registered non-deposit taking NBFC Company. Ashika group (details is enumerated on our website www.ashikagroup.com) is an integrated financial service provider inter alia engaged in the business of Investment Banking, Corporate Lending, Commodity Broking, Debt Syndication & Other Advisory Services.

There were no significant and material disciplinary actions against ASBL taken by any regulatory authority during last three years.

Disclosure

ASBL or its associates, its Research Analysts (including their relatives) may have financial interest in the subject company(ies). However, the said financial interest is not limited to having an open stock market position in /acting as advisor to /having a loan transaction with the subject company(ies) apart from registration as clients.

- ASBL or its Research Analysts (including their relatives) do not have any actual / beneficial ownership of 1% or more of securities of the subject company(ies) at the end of the month immediately preceding the date of publication of this report or date of the public appearance. However ASBL's associates may have actual / beneficial ownership of 1% or more of securities of the subject company(ies).
- ASBL or their Research Analysts (including their relatives) do not have any other material conflict of interest at the time of publication of this research report or date of the public appearance. However ASBL's associates might have an actual / potential conflict of interest (other than ownership).
- ASBL or its associates may have received compensation for investment banking, merchant banking, and brokerage services and for other products and services from the subject companies during the preceding 12 months. However, ASBL or its associates or its Research analysts (forming part of Research Desk) have not received any compensation or other benefits from the subject companies or third parties in connection with the research report. Moreover, Research Analysts have not received any compensation from the companies mentioned herein in the past twelve months.
- ASBL or their Research Analysts have not managed or co-managed public offering of securities for the subject company(ies) in the past twelve months. However ASBL's associates may have managed or co-managed public offering of securities for the subject company(ies) in the past twelve months.
- Research Analysts have not served as an officer, director or employee of the companies mentioned in the report.
- Neither ASBL nor its Research Analysts have been engaged in market making activity for the companies mentioned in the report.

Disclaimer

The research recommendation and information herein are solely for the personal information of the authorized recipient and does not construe to be an offer documents or any investment, legal or taxation advice or solicitation of any action based upon it. This report is not for public distribution or use by any person or entity, where such distribution, publication, availability or use would be contrary to law, regulation or subject to any registration or licensing requirement. We will not treat recipients as customer by virtue of their receiving this report. The report is based upon the information obtained from public sources that we consider reliable, but we do not guarantee its accuracy or completeness. ASBL shall not be in anyways responsible for any loss or damage that may arise to any such person from any inadvertent error in the information contained in this report. The recipients of this report should rely on their own investigations.