

## Technical Report

### Closing Brief

Benchmark indices in previous session lacked any major trigger both from the domestic and foreign markets as a result of which the market ended on a flat note. Nifty finally ended at 9857.05 levels up by 4.55 points or 0.05%.

### Technical Build up

- ❖ Bullish engulfing candle with decrease in volume
- ❖ Sell crossover in oscillators.
- ❖ Lower band of Bollinger exist at 9689
- ❖ Crucial moving average of 20/50 SMA are at 9934 and 9799
- ❖ 200 SMA trend deciding level exist at 9046

### Outlook for the day

Indian Equity market closed almost unchanged in a dull session, showing indecisiveness among the Participants. Federal Reserve Chair Janet Yellen, European Central Bank President Mario Draghi stayed mum on the future of monetary policy in his Friday speech. On the technical front, Nifty made a 'Dragon fly Doji' with a long lower shadow and closed well above its crucial psychological support level of 50-days exponential moving averages (DEMA), but around its 13-DEMA which is placed around 9,860. the index has taken support around the (Golden Mean) 61.8% retracement level 9706 and has staged a superb bounce back after testing those levels during the recent sell off. During the day the immediate support is placed around 9815 levels and the next support is placed around 9765 levels. On the higher side the immediate resistance is placed around 9914 levels and the next resistance is placed around 9970 levels. On the option front maximum Put OI is at 9800 followed by 9500 and 9700 strike while maximum Call OI is at 10000 followed by 10100 and 9900 strike.

### Technical & Derivative Report

World Indices	LTP	Daily Ch(Pts)	Daily Ch(%)
Dow Jones	21813	30	0.14
Nasdaq	6265	-5	0.09
S&P 500	2443	4	0.17
FTSE 100	7401	-5	0.08
DAX	12167	-12	-0.11
Hang Seng	28027	179	0.65
Nikkei	19426	-26	-0.14
Sensex	31596	28	0.09
Nifty	9857	4	0.05

Commodity /Forex	LTP	Daily Ch(Pts)	Daily Ch(%)
Gold (\$/Oz)	1299.20	1.30	0.10
Silver (\$/Oz)	17.20	0.07	0.40
Copper(USD/lb.)	307.20	1.55	0.51
Brent Crude(USD/bbl)	52.53	0.12	0.23
USD/INR	64.03	-0.08	-0.13
USD/YEN	109.13	-0.23	-0.21
USD/EUR	1.1927	0.0003	0.03

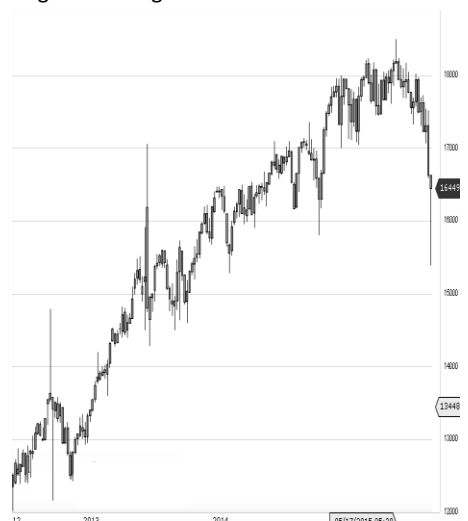
#### Support/Resistance levels for Indian Equity Indices

	S1	S2	CMP	R1	R2
Sensex	31455	31290	31596	31790	31970
Nifty	9815	9765	9857	9914	9970
Nifty (Fut)	9830	9780	9873	9930	9985

#### Pivot Level

Sensex	
Nifty	

**US:** US market closed mostly higher Friday on new hopes for tax reform, with the Dow Jones industrial average notching its first weekly gain in the last three weeks. Technically DJIA is presently trading at the 5th leg through Elliot wave count with negative divergence in oscillators.



Increase in OI with Increase in Price (Long Buildup)						Increase in OI with Decrease in Price (Short Buildup)					
Symbol	Prev OI	Curr OI	OI Chg (%)	Curr Pr.	Pr.Chg (%)	Symbol	Prev OI	Curr OI	OI Chg (%)	Curr Pr.	Pr.Chg (%)
KAJARIA						RAMCO					
CER	483200	701600	45.2	701.55	7.7	CEM	542400	627200	15.6	665.65	[0.1]
BERGEP						INDIGO	1465800	1627800	11.1	1190	[2.5]
AINT	1163800	1372800	18	245.5	3.2	SHREEC					
PIDILITI						EM	32000	33300	4.1	16996.3	[1.3]
ND	905000	1063000	17.5	831.5	1.9	NIIITTEC					
MANAP	2279400	2457600				H	988500	1021500	3.3	495.65	[0.3]
PURAM	0	0	7.8	96.1	3.1	BAJAJ-AUTO	1219500	1256500	3	2733.6	[1.0]
TATAPO	2628000	2785500									
WER	0	0	6	79.25	0.4						

Nifty gained by 0.05% with Nifty future added 1.5 lakh shares in open interest and stock future shaded 336.6 Lakh shares in open interest.

- Nifty PCR increased to 1.22 from 1.17
- Total Nifty Calls shaded 4.8 lakh shares in open interest.
- Total Nifty Puts added 28.1 lakh shares in open interest.
- Maximum open interest (Nifty) in Calls for July series is at 10000 and 9800 put.
- FII's sold net Rs.696.93 Cr(provisional), while DIIs bought net Rs.1044.38 Cr in cash market.
- FII bought net Rs.2403.78 Cr in F&O
- Securities in Ban Period: DLF, GMRINFRA, HDIL, IBREALEST, JPASSOCIAT, JSWENERGY & JUSTDIAL

## Nifty Tracker

PARTICULARS	24/08/2017	23/08/2017	22/08/2017	21/08/2017
Spot	9857.05	9852.5	9765.55	9754.35
% Change in Spot	0.05%	0.89%	0.11%	-0.84%
Nifty(FUT) Aug	9873.25	9862.3	9784.65	9768.6
Nifty(FUT) Aug Vol.	67927	106912	139197	123699
Nifty(FUT) Aug - OI	24084525	24278325	25101075	25573275
Nifty(FUT) Sep	9907.35	9895.55	9816.9	9801.75
Nifty(FUT) Sep Vol.	11923	10297	12730	6921
Nifty(FUT) Sep - OI	2506875	2175825	1932825	1849425

## Trade Statistics for 24/08/2017

PARTICULARS	NO. OF CONTRACTS	TURNOVER (RS. CR.)	PUT CALL RATIO
NSE Index Futures	1,55,473	13250	-
NSE Stock Futures	7,20,964	50055	-
NSE Index Options	98,32,956	9,12,591.51	-
NSE Stock Options	5,24,762	37318	0.44
NSE F&O Total Turnover	1,12,34,155	1,013,215	0.84
NSE Cash Turnover	-	24,542.74	-
BSE Cash Turnover	-	3007.53	-
Total Turnover	-	1040765	-

## FII Corner (F&O)

FII NET BUYING/SELLING & CHANGE IN OPEN INTEREST (Cr. Rupee)						
PARTICULARS	24/08/2017		23/08/2017		22/08/2017	
	Net Buying /Selling	Change In Open interest	Net Buying /Selling	Change In Open interest	Net Buying /Selling	Change In Open interest
Index Future	249	-317	-1128	87	209	223
Index option	2064	-1149	1158	1154	-561	4256
Stock Future	90	-626	-50	232	168	328
Stock option	1	-88	114	485	-103	45
Total	2404	-2180	94	1958	-287	4852

## Market Open Interest

ADDITION/REDUCTION IN MARKET OPEN INTEREST					
Contracts	24/08/2017	23/08/2017	22/08/2017	21/08/2017	18/08/2017
Index Futures	-340	-594	-371	778	265
Index Options	868	1721	-331	-711	630
Stock Futures	13295	1934	8285	8492	-27044
Stock Options	-499	-448	190	1455	2034
F&O Total	13323	2613	7773.59	10014.11	-24114.97

## Nifty Option Open Interest Statistics

NIFTY OPTIONS HIGHEST ADDITION IN OPEN INTEREST						
Expiry	Strike	Option Type	Settlement Price	Volume	Open Interest	Change In OI
31-Aug-17	9750	PE	19.35	38323	1019850	448950
28-Sep-17	8000	CE	1888.2	5939	816225	432675
31-Aug-17	9850	PE	42.6	45959	1041600	422550
31-Aug-17	9800	PE	29.6	238944	6131400	421650
31-Aug-17	9500	PE	3.25	57021	5035200	353850
31-Aug-17	10000	CE	11	183812	5795700	290700
31-Aug-17	9700	PE	13.45	155992	4481850	276525
28-Sep-17	9800	PE	96.5	17272	1712625	265125
31-Aug-17	9850	CE	66.5	42602	1002900	261600
31-Aug-17	9650	PE	8.2	44849	1068000	235950

NIFTY OPTIONS HIGHEST REDUCTION IN OPEN INTEREST						
Expiry	Strike	Option Type	Settlement Price	Volume	Open Interest	Change In OI
31-Aug-17	8000	CE	1870.25	5071	1832550	-369000
31-Aug-17	9800	CE	100.4	111476	2739975	-285825
31-Aug-17	9400	PE	1.45	31639	2559750	-205200
31-Aug-17	9700	CE	180.75	15155	1196475	-200850
31-Aug-17	9000	CE	872.05	2786	753225	-198075
31-Aug-17	10300	CE	0.85	11361	2374575	-172275
31-Aug-17	10200	CE	1.1	23160	4272150	-167850
31-Aug-17	10500	PE	616.5	3125	653325	-159300
31-Aug-17	9300	PE	1.2	9920	1602600	-139200
31-Aug-17	10000	PE	131.3	26498	1948650	-128400

## Stock Option Open Interest Statistics

STOCK OPTIONS WITH HIGHEST ADDITION IN OPEN INTEREST							
Symbol	Expiry	Strike	Option Type	Settl. Price	Volume	Open Interest	Change in OI
SUZLON	28-Sep-17	17.5	CE	0.65	106	6570000	2190000
SUZLON	31-Aug-17	17.5	CE	0.1	123	38280000	870000
IFCI	31-Aug-17	25	CE	0.2	1148	5786000	770000
SBIN	28-Sep-17	280	PE	7.35	313	1041000	759000
SBIN	31-Aug-17	275	PE	1.5	2394	3147000	687000
GSFC	31-Aug-17	140	CE	2.15	778	1458000	630000
IFCI	31-Aug-17	22.5	PE	0.15	261	2794000	572000
TATASTEEL	31-Aug-17	640	PE	8.15	814	720000	508000
JSWSTEEL	31-Aug-17	240	PE	1.65	443	609000	492000
MANAPPURAM	31-Aug-17	100	CE	0.65	1311	1992000	486000

STOCK OPTIONS WITH HIGHEST REDUCTION IN OPEN INTEREST							
Symbol	Expiry	Strike	Option Type	Settl. Price	Volume	Open Int.	Change in OI
GMRINFRA	31-Aug-17	20	CE	0.05	131	33300000	-3330000
GMRINFRA	31-Aug-17	17.5	CE	0.35	101	17370000	-1530000
GMRINFRA	31-Aug-17	17.5	PE	0.5	36	13590000	-1260000
ITC	31-Aug-17	300	CE	0.3	1000	5433600	-830400
JPASSOCIAT	31-Aug-17	30	CE	0.1	18	9248000	-816000
SBIN	31-Aug-17	320	CE	0.15	572	7848000	-600000
NHPC	31-Aug-17	32.5	CE	0.05	44	3699000	-540000
DLF	31-Aug-17	200	CE	1.45	306	3435000	-520000
PNB	31-Aug-17	145	CE	2.75	1237	2460500	-490000
FEDERALBNK	31-Aug-17	120	CE	0.05	75	5412000	-462000

## Research Team

Name	Designation	Email ID	Contact No.
Paras Bothra	President Equity Research	paras@ashikagroup.com	+91 22 6611 1704
Sanjeev Jain	AVP Equity Research	sanjeev.j@ashikagroup.com	+91 33 4036 0650
Krishna Kumar Agarwal	Equity Research Analyst	krishna.a@ashikagroup.com	+91 33 4036 0646
Partha Mazumder	Equity Research Analyst	partha.m@ashikagroup.com	+91 33 4036 0647
Arijit Malakar	Equity Research Analyst	amalakar@ashikagroup.com	+91 33 4036 0644
Kapil Jagasia	Equity Research Analyst	kapil.j@ashikagroup.com	+91 22 6611 1715
Tirthankar Das	Technical & Derivative Analyst	tirthankar.d@ashikagroup.com	+91 33 4036 0645

Ashika Stock Broking Limited ("ASBL") or Research Entity has started its journey in the year 1994 and is engaged in the business of broking services, depository services, distributor of financial products (Mutual fund, IPO & Bonds). This research report has been prepared and distributed by ASBL in the sole capacity of a Research Analyst (Reg No. INH00000206) of SEBI (Research Analyst) Regulations 2014. ASBL is a wholly owned subsidiary of Ashika Global Securities (P) Ltd., a RBI registered non-deposit taking NBFC Company. Ashika group (details is enumerated on our website [www.ashikagroup.com](http://www.ashikagroup.com)) is an integrated financial service provider inter alia engaged in the business of Investment Banking, Corporate Lending, Commodity Broking, Debt Syndication & Other Advisory Services.

There were no significant and material disciplinary actions against ASBL taken by any regulatory authority during last three years.

### Disclosure

ASBL or its associates, its Research Analysts (including their relatives) may have financial interest in the subject company(ies). However, the said financial interest is not limited to having an open stock market position in /acting as advisor to /having a loan transaction with the subject company(ies) apart from registration as clients.

- 1) ASBL or its Research Analysts (including their relatives) do not have any actual / beneficial ownership of 1% or more of securities of the subject company(ies) at the end of the month immediately preceding the date of publication of this report or date of the public appearance. However ASBL's associates may have actual / beneficial ownership of 1% or more of securities of the subject company(ies).
- 2) ASBL or their Research Analysts (including their relatives) do not have any other material conflict of interest at the time of publication of this research report or date of the public appearance. However ASBL's associates might have an actual / potential conflict of interest (other than ownership).
- 3) ASBL or its associates may have received compensation for investment banking, merchant banking, and brokerage services and for other products and services from the subject companies during the preceding 12 months. However, ASBL or its associates or its Research analysts (forming part of Research Desk) have not received any compensation or other benefits from the subject companies or third parties in connection with the research report. Moreover, Research Analysts have not received any compensation from the companies mentioned herein in the past twelve months.
- 4) ASBL or their Research Analysts have not managed or co-managed public offering of securities for the subject company(ies) in the past twelve months. However ASBL's associates may have managed or co-managed public offering of securities for the subject company(ies) in the past twelve months.
- 5) Research Analysts have not served as an officer, director or employee of the companies mentioned in the report.
- 6) Neither ASBL nor its Research Analysts have been engaged in market making activity for the companies mentioned in the report.

### Disclaimer

The research recommendation and information herein are solely for the personal information of the authorized recipient and does not construe to be an offer documents or any investment, legal or taxation advice or solicitation of any action based upon it. This report is not for public distribution or use by any person or entity, where such distribution, publication, availability or use would be contrary to law, regulation or subject to any registration or licensing requirement. We will not treat recipients as customer by virtue of their receiving this report. The report is based upon the information obtained from public sources that we consider reliable, but we do not guarantee its accuracy or completeness. ASBL shall not be in anyways responsible for any loss or damage that may arise to any such person from any inadvertent error in the information contained in this report. The recipients of this report should rely on their own investigations.