

Technical Report

Closing Brief

Markets closed in green fueled by index heavy weight INFY's rally on Nandan Nilekani's comeback and easing border tensions at Doklam. Nifty ended the day near the upper end of its trading range closing at 9912.80 up by 55.75 points or 0.57%.

Technical Build up

- ❖ Bullish candle with decrease in volume
- ❖ Buy crossover in oscillators.
- ❖ Lower band of Bollinger exist at 9681
- ❖ Crucial moving average of 20/50 SMA are at 9920 and 9810
- ❖ 200 SMA trend deciding level exist at 9061

Outlook for the day

Indian Equity market gained over half a percent today amid volatility as Infosys Ltd surged on the first day of trading since the appointment of co-founder Nandan Nilekani as chairman and the reduced geo-political tension between China and India as both have agreed on expeditious disengagement of troops at Doklam. On the technical front, Nifty made a 'Doji' and closed well above its crucial psychological support level of 50-days exponential moving averages (DEMA). It has been making higher lows from last four trading sessions and now till it holds above 9880. However with a range of resistance emanating from '89-EMA' level of 9640 – 9620 it seems that 10000 mark would be a daunting task. During the day Nifty has immediate support around 9880 and next support at 9840. Immediate resistance around 9950 and next resistance around 10000. On the option front maximum Put OI is at 9800 followed by 9500 strike while maximum Call OI is at 10000 followed by 9900 strike.

Technical & Derivative Report

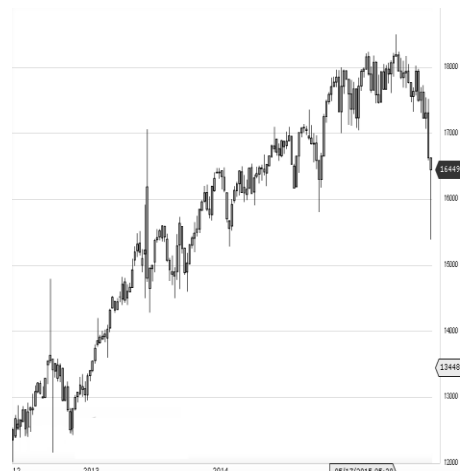
World Indices	LTP	Daily Ch(Pts)	Daily Ch(%)
Dow Jones	21808	-5	-0.02
Nasdaq	6283	17	0.28
S&P 500	2444	1	0.05
FTSE 100	7401	-5	-0.08
DAX	12123	-44	-0.37
Hang Seng	27686	-177	-0.64
Nikkei	19294	-155	-0.80
Sensex	31750	154	0.49
Nifty	9912	55	0.57

Commodity /Forex	LTP	Daily Ch(Pts)	Daily Ch(%)
Gold (\$/Oz)	1323.30	8.00	0.61
Silver (\$/Oz)	17.57	0.04	0.21
Copper(USD/lb.)	309.7	1.10	0.36
Brent Crude(USD/bbl)	52.09	0.20	0.39
USD/INR	63.91	-0.12	-0.19
USD/YEN	108.73	-0.52	-0.48
USD/EUR	1.1968	-0.0011	-0.09

Support/Resistance levels for Indian Equity Indices					
	S1	S2	CMP	R1	R2
Sensex	31610	31510	31750	31875	32040
Nifty	9880	9840	9912	9950	10000
Nifty (Fut)	9885	9845	9917	9955	10005

Pivot Level	
Sensex	31754
Nifty	9906

US: The Dow Jones industrial average fell 5.27 points to close at 21,808.40, with insurance giant Travelers contributing the most to the losses. The 30-stock index traded higher earlier in the session. Technically DJIA is presently trading at the 5th leg through Elliot wave count with negative divergence in oscillators.



Increase in OI with Increase in Price (Long Buildup)						Increase in OI with Decrease in Price (Short Buildup)					
Symbol	Prev OI	Curr OI	OI Chg (%)	Curr Pr.	Pr.Chg (%)	Symbol	Prev OI	Curr OI	OI Chg (%)	Curr Pr.	Pr.Chg (%)
NESTLEI						HCLTEC					
ND	87800	111900	27.5	7078.75	7.2	H	5915700	7245000	22.5	867.5	[0.2]
COLPAL	1116500	1316700	17.9	1100.25	0.7	TCS	5558000	6464500	16.3	2488	[0.3]
	1263750	1464000					1006800				
DABUR	0	0	15.9	312.7	3.9	GAIL	9346000	0	7.7	380.35	[0.2]
VOLTAS	2702000	3082000	14.1	539.6	3.2	POWER	1114000	1189200			
DCBBAN						GRID	0	0	6.8	217.95	[1.3]
K	6088500	6745500	10.8	192.45	4.1	DRREDD					
						Y	3889600	4101200	5.4	2050	[1.7]

Nifty gained by 0.57% with Nifty future added 7.9 lakh shares in open interest and stock future added 818.8 Lakh shares in open interest.

- Nifty PCR decreased to 1.21 from 1.22
- Total Nifty Calls added 16.1 lakh shares in open interest.
- Total Nifty Puts added 17.4 lakh shares in open interest.
- Maximum open interest (Nifty) in Calls for July series is at 10000 and 9800 put.
- FII's sold net Rs.124.74 Cr(provisional), while DIIs bought net Rs.476.26 Cr in cash market.
- FII bought net Rs.2879.62 Cr in F&O
- Securities in Ban Period: BEML, GMRINFRA, HDIL, IBREALEST, INDIACEM, JPASSOCIAT, JSWENERGY, JUSTDIAL & RELCAPITAL

Nifty Tracker

PARTICULARS	28/08/2017	24/08/2017	23/08/2017	22/08/2017
Spot	9912.8	9857.05	9852.5	9765.55
% Change in Spot	0.57%	0.05%	0.89%	0.11%
Nifty(FUT) Aug	9917.05	9873.25	9862.3	9784.65
Nifty(FUT) Aug Vol.	105188	67927	106912	139197
Nifty(FUT) Aug - OI	22741650	24084525	24278325	25101075
Nifty(FUT) Sep	9950.8	9907.35	9895.55	9816.9
Nifty(FUT) Sep Vol.	41486	11923	10297	12730
Nifty(FUT) Sep - OI	4547475	2506875	2175825	1932825

Trade Statistics for 28/08/2017

PARTICULARS	NO. OF CONTRACTS	TURNOVER (RS. CR.)	PUT CALL RATIO
NSE Index Futures	2,11,516	17189	-
NSE Stock Futures	9,54,413	67407	-
NSE Index Options	43,63,126	3,58,636.24	-
NSE Stock Options	5,42,587	39231	0.45
NSE F&O Total Turnover	60,71,642	482,462	1.03
NSE Cash Turnover	-	24,237.38	-
BSE Cash Turnover	-	3633.14	-
Total Turnover	-	510333	-

FII Corner (F&O)

FII NET BUYING/SELLING & CHANGE IN OPEN INTEREST (Cr. Rupee)						
PARTICULARS	28/08/2017		24/08/2017		23/08/2017	
	Net Buying /Selling	Change In Open interest	Net Buying /Selling	Change In Open interest	Net Buying /Selling	Change In Open interest
Index Future	-536	-35	249	-317	-1128	87
Index option	2446	317	2064	-1149	1158	1154
Stock Future	698	-60	90	-626	-50	232
Stock option	272	-226	1	-88	114	485
Total	2880	-4	2404	-2180	94	1958

Market Open Interest

ADDITION/REDUCTION IN MARKET OPEN INTEREST					
Contracts	28/08/2017	24/08/2017	23/08/2017	22/08/2017	21/08/2017
Index Futures	844	-340	-594	-371	778
Index Options	1808	868	1721	-331	-711
Stock Futures	-20927	13295	1934	8285	8492
Stock Options	-50	-499	-448	190	1455
F&O Total	-18325	13323	2613.05	7773.59	10014.11

Nifty Option Open Interest Statistics

NIFTY OPTIONS HIGHEST ADDITION IN OPEN INTEREST						
Expiry	Strike	Option Type	Settlement Price	Volume	Open Interest	Change In OI
31-Aug-17	9900	PE	34.35	319051	4715250	1273950
31-Aug-17	9950	CE	28.65	103401	1740750	1053450
28-Sep-17	8000	CE	1931.45	7572	1374150	557925
31-Aug-17	9900	CE	51.8	329832	4826775	518250
31-Aug-17	9850	PE	20.25	103189	1535925	494325
31-Aug-17	9800	PE	12.9	296799	6538125	406725
28-Sep-17	9000	PE	7.45	17576	1024575	355950
31-Aug-17	10100	CE	3.15	100774	4667850	341025
28-Sep-17	10200	CE	34.95	19050	1165200	340875
31-Aug-17	9950	PE	57.35	25890	437400	294075

NIFTY OPTIONS HIGHEST REDUCTION IN OPEN INTEREST						
Expiry	Strike	Option Type	Settlement Price	Volume	Open Interest	Change In OI
31-Aug-17	9800	CE	128.9	92856	1868400	-871575
31-Aug-17	9700	PE	5.25	184616	3786750	-695100
31-Aug-17	9650	PE	3.05	34786	395325	-672675
31-Aug-17	8000	CE	1916.2	7974	1267425	-565125
31-Aug-17	9000	PE	0.35	17252	2094225	-417000
31-Aug-17	11000	PE	1079.75	4086	904725	-272700
31-Aug-17	9700	CE	217.75	11014	934275	-262200
31-Aug-17	11000	CE	0.45	6832	1163700	-248475
31-Aug-17	9850	CE	85.3	29143	775725	-227175
31-Aug-17	10100	PE	179.75	8289	789300	-193275

Stock Option Open Interest Statistics

STOCK OPTIONS WITH HIGHEST ADDITION IN OPEN INTEREST							
Symbol	Expiry	Strike	Option Type	Settl. Price	Volume	Open Interest	Change in OI
SUZLON	28-Sep-17	17.5	CE	0.75	167	8190000	1620000
ADANIENT	31-Aug-17	120	CE	2.15	3136	3104000	1456000
ADANIENT	31-Aug-17	125	CE	0.95	1549	2224000	1176000
ADANIPOWER	31-Aug-17	32.5	CE	0.2	402	2600000	1120000
ADANIENT	31-Aug-17	115	PE	0.95	449	1256000	1096000
FEDERALBNK	31-Aug-17	105	CE	4.8	224	1727000	1001000
L&TFH	31-Aug-17	190	CE	2.6	1901	1417500	999000
L&TFH	31-Aug-17	180	PE	0.8	807	850500	810000
ADANIENT	31-Aug-17	130	CE	0.45	792	1752000	784000
SOUTHBANK	31-Aug-17	30	CE	0.1	51	6893328	662820

STOCK OPTIONS WITH HIGHEST REDUCTION IN OPEN INTEREST							
Symbol	Expiry	Strike	Option Type	Settl. Price	Volume	Open Int.	Change in OI
GMRINFRA	31-Aug-17	20	CE	0.05	65	31275000	-2025000
GMRINFRA	31-Aug-17	17.5	CE	0.3	104	16020000	-1350000
INFY	31-Aug-17	920	CE	24.45	6244	997000	-1064000
ASHOKLEY	31-Aug-17	110	CE	0.3	1497	5201000	-1001000
ADANIENT	31-Aug-17	110	CE	9.7	281	328000	-1000000
ASHOKLEY	31-Aug-17	105	CE	1.8	1067	2541000	-973000
GMRINFRA	31-Aug-17	17.5	PE	0.35	41	12735000	-855000
INFY	31-Aug-17	900	CE	40.9	4367	1669000	-766500
SBIN	31-Aug-17	275	PE	1.15	2717	2391000	-756000
TATAMOTORS	31-Aug-17	440	CE	0.1	572	1629000	-706500

Research Team

Name	Designation	Email ID	Contact No.
Paras Bothra	President Equity Research	paras@ashikagroup.com	+91 22 6611 1704
Sanjeev Jain	AVP Equity Research	sanjeev.j@ashikagroup.com	+91 33 4036 0650
Krishna Kumar Agarwal	Equity Research Analyst	krishna.a@ashikagroup.com	+91 33 4036 0646
Partha Mazumder	Equity Research Analyst	partha.m@ashikagroup.com	+91 33 4036 0647
Arijit Malakar	Equity Research Analyst	amalakar@ashikagroup.com	+91 33 4036 0644
Kapil Jagasia	Equity Research Analyst	kapil.j@ashikagroup.com	+91 22 6611 1715
Tirthankar Das	Technical & Derivative Analyst	tirthankar.d@ashikagroup.com	+91 33 4036 0645

Ashika Stock Broking Limited ("ASBL") or Research Entity has started its journey in the year 1994 and is engaged in the business of broking services, depository services, distributor of financial products (Mutual fund, IPO & Bonds). This research report has been prepared and distributed by ASBL in the sole capacity of a Research Analyst (Reg No. INH00000206) of SEBI (Research Analyst) Regulations 2014. ASBL is a wholly owned subsidiary of Ashika Global Securities (P) Ltd., a RBI registered non-deposit taking NBFC Company. Ashika group (details is enumerated on our website www.ashikagroup.com) is an integrated financial service provider inter alia engaged in the business of Investment Banking, Corporate Lending, Commodity Broking, Debt Syndication & Other Advisory Services.

There were no significant and material disciplinary actions against ASBL taken by any regulatory authority during last three years.

Disclosure

ASBL or its associates, its Research Analysts (including their relatives) may have financial interest in the subject company(ies). However, the said financial interest is not limited to having an open stock market position in /acting as advisor to /having a loan transaction with the subject company(ies) apart from registration as clients.

- ASBL or its Research Analysts (including their relatives) do not have any actual / beneficial ownership of 1% or more of securities of the subject company(ies) at the end of the month immediately preceding the date of publication of this report or date of the public appearance. However ASBL's associates may have actual / beneficial ownership of 1% or more of securities of the subject company(ies).
- ASBL or their Research Analysts (including their relatives) do not have any other material conflict of interest at the time of publication of this research report or date of the public appearance. However ASBL's associates might have an actual / potential conflict of interest (other than ownership).
- ASBL or its associates may have received compensation for investment banking, merchant banking, and brokerage services and for other products and services from the subject companies during the preceding 12 months. However, ASBL or its associates or its Research analysts (forming part of Research Desk) have not received any compensation or other benefits from the subject companies or third parties in connection with the research report. Moreover, Research Analysts have not received any compensation from the companies mentioned herein in the past twelve months.
- ASBL or their Research Analysts have not managed or co-managed public offering of securities for the subject company(ies) in the past twelve months. However ASBL's associates may have managed or co-managed public offering of securities for the subject company(ies) in the past twelve months.
- Research Analysts have not served as an officer, director or employee of the companies mentioned in the report.
- Neither ASBL nor its Research Analysts have been engaged in market making activity for the companies mentioned in the report.

Disclaimer

The research recommendation and information herein are solely for the personal information of the authorized recipient and does not construe to be an offer documents or any investment, legal or taxation advice or solicitation of any action based upon it. This report is not for public distribution or use by any person or entity, where such distribution, publication, availability or use would be contrary to law, regulation or subject to any registration or licensing requirement. We will not treat recipients as customer by virtue of their receiving this report. The report is based upon the information obtained from public sources that we consider reliable, but we do not guarantee its accuracy or completeness. ASBL shall not be in anyways responsible for any loss or damage that may arise to any such person from any inadvertent error in the information contained in this report. The recipients of this report should rely on their own investigations.