

Technical Report

Closing Brief

Nifty ended the September expiry on a positive note after a volatile trade yesterday. The Index has also seen a recovery for the first time in six sessions closing with gains of 0.35% for the day at 7768.95.

Technical Build up

- ❖ Bearish candle with increase in volume
- ❖ Sell crossover in oscillators.
- ❖ Lower band of Bollinger exist at 9773
- ❖ Crucial moving average of 20/50 SMA are at 9995 and 9949
- ❖ 200 SMA trend deciding level exist at 9260

Outlook for the day

Indian Equity market reversed their seven-day losing spell as covering of shorts picked up on a day of derivatives expiry. Moreover, rally in the global markets and bargain hunting in the lower levels lifted market. On the technical front, Nifty formed bullish Hammer formation in daily chart after forming 7 consecutive bearish candles. Now if it manages to hold above 9750-9777 zones then short term reversal could be seen for an up move towards 9880 and 9928 zones however Nifty need to sustain above 9685 to remain positive in the market. On the option front for the month of October, maximum Put OI is at 9700 followed by 9500 strike while maximum Call OI is at 10000 followed by 9900 strike.

Technical & Derivative Report

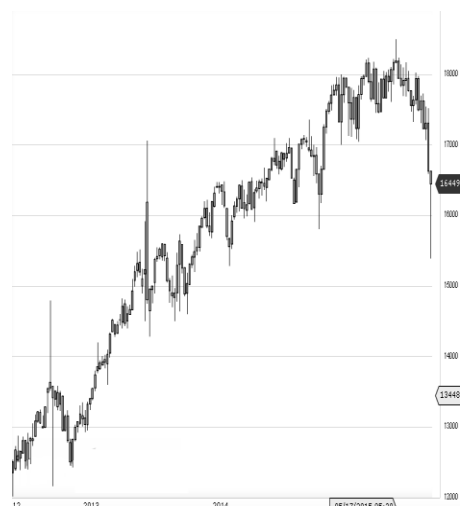
World Indices	LTP	Daily Ch(Pts)	Daily Ch(%)
Dow Jones	22381	40	0.18
Nasdaq	6453	-	-
S&P 500	2510	3	0.12
FTSE 100	7322	9	0.13
DAX	12704	47	0.37
Hang Seng	27468	46	0.17
Nikkei	20289	-74	-0.38
Sensex	31159	-439	-1.39
Nifty	9735	-135	-1.38

Commodity /Forex	LTP	Daily 1.1Ch(Pts)	Daily Ch(%)
Gold (\$/Oz)	1287.60	-1.10	-0.09
Silver (\$/Oz)	16.85	-	-0.01
Copper(USD/lb.)	297.05	-1.05	-0.35
Brent			
Crude(USD/bbl)	57.67	0.26	0.45
USD/INR	65.50	-0.20	-0.31
USD/YEN	112.58	0.24	0.21
USD/EUR	1.1782	-0.0004	-0.03

Support/Resistance levels for Indian Equity Indices					
	S1	S2	CMP	R1	R2
Sensex	30940	30845	31159	31505	31705
Nifty	9670	9640	9735	9840	9900
Nifty (Fut)	9725	9695	9787	9895	9955

Pivot Level					
Sensex				31352	
Nifty				9790	

US: US Market closed about 40 points higher Thursday and the small-cap Russell 2000 index hit an all-time high after the release of the GOP's highly anticipated tax reform plan. Technically DJIA is presently trading at the 5th leg through Elliot wave count with negative divergence in oscillators.



Increase in OI with Increase in Price (Long Buildup)						Increase in OI with Decrease in Price (Short Buildup)					
Symbol	Prev OI	Curr OI	OI Chg (%)	Curr Pr.	Pr.Chg (%)	Symbol	Prev OI	Curr OI	OI Chg (%)	Curr Pr.	Pr.Chg (%)
TCS	3431250	3986000	16.2	2493.75	0.7	ZEEL	4260100	5111600	20	523.05	[0.1]
NESTLEI						AXISBA	1947720	2324640			
ND	71200	80500	13.1	7119.5	0.7	NK	0	0	19.4	506.8	[0.9]
TECHM	6392100	7049900	10.3	450.25	0.8	BHARTI	1532720	1825800			
AMBUJA		1019750				ARTL	0	0	19.1	386.35	[0.2]
CEM	9730000	0	4.8	262.05	0.1	SIEMEN					
OFSS	49050	51150	4.3	3543.85	0.9	S	489500	570500	16.6	1223	[7.8]
						BRITAN					
						NIA	483400	559400	15.7	4303.2	[0.6]

Derivative Report

Technical & Derivative Report

Nifty closed at 9768.95 gain of 0.34% on the last day of Sep expiry. Nifty declined by 1.50% in Sep expiry against a gain of 1.02% in Aug(expiry to expiry). Nifty started the month with 205 lakh shares in open interest and stock future with 447 lakh shares in open interest.

- Nifty PCR is at 0.93 against 1.26 on the first day of Oct expiry.
- Total Nifty Calls started with 33 lakh shares in open interest against 49 lakh shares in last month.
- Total Nifty Puts started with 31 lakh shares in open interest against 68 lakh shares in last month.
- Maximum open interest (Nifty) in Calls for Sep series is at 10000 and 9700 put.
- FII's sold net Rs.5328.46 Cr(provisional), while DIIs bought net Rs.5196.6 Cr in cash market.
- FII sold net Rs.10.91 Cr in F&O
- Securities in Ban Period: NIL

Nifty Tracker

PARTICULARS	28/09/2017	27/09/2017	26/09/2017	25/09/2017
Spot	9768.95	9735.75	9871.5	9872.6
% Change in Spot	0.34%	-1.38%	-0.01%	-0.92%
Nifty(FUT) Sep	9766.8	9739.65	9866.95	9878.65
Nifty(FUT) Sep Vol.	199784	196190	126602	171495
Nifty(FUT) Sep - OI	8853000	14227500	17637075	19549275
Nifty(FUT) Oct	9787	9772.3	9899.85	9911.75
Nifty(FUT) Oct Vol.	186790	102270	61866	52720
Nifty(FUT) Oct - OI	19696350	11410875	7430775	4400250

Trade Statistics for 28/09/2017

PARTICULARS	NO. OF CONTRACTS	TURNOVER (RS. CR.)	PUT CALL RATIO
NSE Index Futures	6,42,121	52477	-
NSE Stock Futures	20,82,078	1,44,162.32	-
NSE Index Options	1,48,82,619	12,55,108.96	-
NSE Stock Options	6,37,591	48927	0.58
NSE F&O Total Turnover	1,82,44,409	1,500,675	0.82
NSE Cash Turnover	-	38,254.89	-
BSE Cash Turnover	-	3146.8	-
Total Turnover	-	1542077	-

FII Corner (F&O)

FII NET BUYING/SELLING & CHANGE IN OPEN INTEREST (Cr. Rupee)						
PARTICULARS	28/09/2017		27/09/2017		26/09/2017	
	Net Buying /Selling	Change In Open interest	Net Buying /Selling	Change In Open interest	Net Buying /Selling	Change In Open interest
Index Future	-2803	-8533	-250	866	-1263	1629
Index option	2810	-25920	477	1469	828	2276
Stock Future	-83	-5052	489	402	320	907
Stock option	66	-7307	184	-359	213	0
Total	-10	-46812	900	2379	98	4811

Market Open Interest

ADDITION/REDUCTION IN MARKET OPEN INTEREST					
Contracts	28/09/2017	27/09/2017	26/09/2017	25/09/2017	22/09/2017
Index Futures	5176	563	1760	599	-424
Index Options	8462	-2618	2194	-3119	-3806
Stock Futures	11626	8475	5408	10500	-18793
Stock Options	622	-641	190	-469	464
F&O Total	25886	5778	9552.06	7511.46	-22558.89

Nifty Option Open Interest Statistics

NIFTY OPTIONS HIGHEST ADDITION IN OPEN INTEREST						
Expiry	Strike	Option Type	Settlement Price	Volume	Open Interest	Change In OI
26-Oct-17	9800	CE	123.5	86899	2308050	1182600
26-Oct-17	10000	CE	44.25	82365	4065900	851025
26-Oct-17	9900	CE	76.6	83092	2506575	829350
26-Oct-17	9500	PE	48.5	71333	2785500	817275
26-Oct-17	9700	CE	183.9	43654	1286475	778725
26-Oct-17	9600	PE	68.35	73481	2445750	757575
26-Oct-17	9200	PE	16.2	18285	1220925	512250
26-Oct-17	8200	CE	1568.65	7307	2706975	476550
26-Oct-17	9300	PE	22.9	22213	981375	463800
26-Oct-17	9700	PE	96.3	87172	3395475	404625

NIFTY OPTIONS HIGHEST REDUCTION IN OPEN INTEREST						
Expiry	Strike	Option Type	Settlement Price	Volume	Open Interest	Change In OI
30-Nov-17	9800	PE	184.1	1585	279900	-26400
30-Nov-17	9900	PE	225.9	392	137250	-12000
30-Nov-17	10200	CE	50	2096	301200	-10125
30-Nov-17	10000	CE	109.1	3117	274800	-8325
30-Nov-17	10800	CE	4.7	113	24525	-3300
30-Nov-17	10600	CE	13.9	130	79875	-2625
26-Oct-17	11400	CE	0.75	43	2175	-1050
26-Oct-17	10150	PE	365.9	16	24825	-900
30-Nov-17	10300	PE	519.3	3	4050	-225
0	0	0	0	0	0	0

Stock Option Open Interest Statistics

STOCK OPTIONS WITH HIGHEST ADDITION IN OPEN INTEREST							
Symbol	Expiry	Strike	Option Type	Settl. Price	Volume	Open Interest	Change in OI
SUZLON	26-Oct-17	17.5	CE	0.4	294	13080000	3180000
SUZLON	26-Oct-17	17.5	PE	2.25	122	6120000	2700000
SUZLON	26-Oct-17	12.5	CE	3.05	92	2610000	2610000
GMRINFRA	26-Oct-17	20	PE	4.05	76	2565000	1665000
JPASSOCIAT	26-Oct-17	17.5	CE	1.25	56	5100000	1632000
GMRINFRA	26-Oct-17	17.5	PE	1.8	41	3555000	1485000
JPASSOCIAT	26-Oct-17	25	PE	8.2	19	1360000	1292000
SUZLON	26-Oct-17	15	PE	0.65	79	3810000	1200000
JPASSOCIAT	26-Oct-17	20	CE	0.5	28	2584000	1156000
JPASSOCIAT	26-Oct-17	20	PE	3.75	18	1428000	1156000

STOCK OPTIONS WITH HIGHEST REDUCTION IN OPEN INTEREST							
Symbol	Expiry	Strike	Option Type	Settl. Price	Volume	Open Int.	Change in OI
TATAGLOBAL	26-Oct-17	240	PE	35	72	22500	-229500
COALINDIA	26-Oct-17	260	CE	11.95	370	265200	-161500
DHFL	26-Oct-17	650	PE	117.5	79	21000	-97500
RELIANCE	26-Oct-17	960	PE	165.6	102	35000	-75000
JPASSOCIAT	26-Oct-17	27.5	CE	0.05	3	476000	-68000
HDFCBANK	26-Oct-17	1780	CE	36.65	764	83500	-46000
ADANIPOWER	26-Oct-17	25	PE	0.3	2	360000	-40000
RECLTD	26-Oct-17	130	CE	23.4	8	12000	-36000
GLENMARK	26-Oct-17	800	PE	199.85	46	12600	-29400
TATAGLOBAL	26-Oct-17	220	CE	3.1	106	373500	-27000

Research Team

Name	Designation	Email ID	Contact No.
Paras Bothra	President Equity Research	paras@ashikagroup.com	+91 22 6611 1704
Krishna Kumar Agarwal	Equity Research Analyst	krishna.a@ashikagroup.com	+91 33 4036 0646
Partha Mazumder	Equity Research Analyst	partha.m@ashikagroup.com	+91 33 4036 0647
Arijit Malakar	Equity Research Analyst	amalakar@ashikagroup.com	+91 33 4036 0644
Kapil Jagasia	Equity Research Analyst	kapil.j@ashikagroup.com	+91 22 6611 1715
Tirthankar Das	Technical & Derivative Analyst	tirthankar.d@ashikagroup.com	+91 33 4036 0645

Ashika Stock Broking Limited ("ASBL") or Research Entity has started its journey in the year 1994 and is engaged in the business of broking services, depository services, distributor of financial products (Mutual fund, IPO & Bonds). This research report has been prepared and distributed by ASBL in the sole capacity of a Research Analyst (Reg No. INH00000206) of SEBI (Research Analyst) Regulations 2014. ASBL is a wholly owned subsidiary of Ashika Global Securities (P) Ltd., a RBI registered non-deposit taking NBFC Company. Ashika group (details is enumerated on our website www.ashikagroup.com) is an integrated financial service provider inter alia engaged in the business of Investment Banking, Corporate Lending, Commodity Broking, Debt Syndication & Other Advisory Services.

There were no significant and material disciplinary actions against ASBL taken by any regulatory authority during last three years.

Disclosure

ASBL or its associates, its Research Analysts (including their relatives) may have financial interest in the subject company(ies). However, the said financial interest is not limited to having an open stock market position in /acting as advisor to /having a loan transaction with the subject company(ies) apart from registration as clients.

- ASBL or its Research Analysts (including their relatives) do not have any actual / beneficial ownership of 1% or more of securities of the subject company(ies) at the end of the month immediately preceding the date of publication of this report or date of the public appearance. However ASBL's associates may have actual / beneficial ownership of 1% or more of securities of the subject company(ies).
- ASBL or their Research Analysts (including their relatives) do not have any other material conflict of interest at the time of publication of this research report or date of the public appearance. However ASBL's associates might have an actual / potential conflict of interest (other than ownership).
- ASBL or its associates may have received compensation for investment banking, merchant banking, and brokerage services and for other products and services from the subject companies during the preceding 12 months. However, ASBL or its associates or its Research analysts (forming part of Research Desk) have not received any compensation or other benefits from the subject companies or third parties in connection with the research report. Moreover, Research Analysts have not received any compensation from the companies mentioned herein in the past twelve months.
- ASBL or their Research Analysts have not managed or co-managed public offering of securities for the subject company(ies) in the past twelve months. However ASBL's associates may have managed or co-managed public offering of securities for the subject company(ies) in the past twelve months.
- Research Analysts have not served as an officer, director or employee of the companies mentioned in the report.
- Neither ASBL nor its Research Analysts have been engaged in market making activity for the companies mentioned in the report.

Disclaimer

The research recommendation and information herein are solely for the personal information of the authorized recipient and does not construe to be an offer documents or any investment, legal or taxation advice or solicitation of any action based upon it. This report is not for public distribution or use by any person or entity, where such distribution, publication, availability or use would be contrary to law, regulation or subject to any registration or licensing requirement. We will not treat recipients as customer by virtue of their receiving this report. The report is based upon the information obtained from public sources that we consider reliable, but we do not guarantee its accuracy or completeness. ASBL shall not be in anyways responsible for any loss or damage that may arise to any such person from any inadvertent error in the information contained in this report. The recipients of this report should rely on their own investigations.