

# Technical Report

## Closing Brief

Sensex ended with a cut of 33 points or 0.12% at 27850 and Nifty failed to hold on to 8,650 and closed with a cut of 8.50 points or 0.10% at 8633. Even the market breadth, indicating the overall health of the market, was negative and stood at 1162 advances to 1566 declines and 238 issues remained unchanged on BSE.

## Technical Build up

- ❖ Doji candle with decrease in volume
- ❖ Buy crossover in oscillators.
- ❖ Upper band of Bollinger exist at 8649
- ❖ Crucial moving average of 20/50 SMA are at 8377 and 8211
- ❖ 200 SMA trend deciding level exist at 8332

## Outlook for the day

Indian Equity market settled almost flat in a dull trading session today, mirroring global counterparts. Initially, it was the fear of recent immigration curbs from the US which spooked the markets across the globe, including ours. Traders also maintained cautious approach ahead of Union Budget. On the technical front, Nifty remained confined within its previous day's range & also formed a 'Spinning Top' formation. Though the momentum indicators have entered the overbought zone but there is no sign of exhaustion. A decisive close above 61.8% retracement of the September-December fall and post note ban high of 8600 confirms the bullish structural turnaround, and opens the room for extension of current upmove towards 8800 in the near term. While immediate support for the index is at 8400, being the 38.2% retracement of the current up move and last week's congestion area. Volatility will flare up owing to the overbought conditions on the stochastic oscillator and as we move towards the budget. On the option front data depicts incremental built up in 9000 & 9100 CE and in 8500 PE. Indicative band is at 8400-9000.

## Technical & Derivative Report

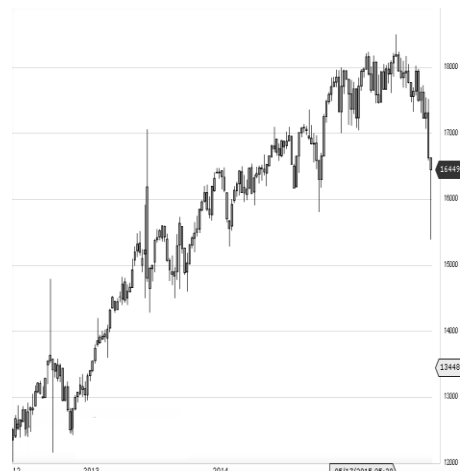
World Indices	LTP	Daily Ch(Pts)	Daily Ch(%)
Dow Jones	19971	-122	-0.61
Nasdaq	5613	-47	-0.83
S&P 500	2280	-13	-0.60
FTSE 100	7118	-66	-0.92
DAX	11681	-132	-1.12
Hang Seng	23360	-13	-0.06
Nikkei	19117	-250	-1.29
Sensex	27849	-32	-0.12
Nifty	8632	-8	-0.10

Commodity /Forex	LTP	Daily Ch(Pts)	Daily Ch(%)
Gold (\$/Oz)	1199.50	3.50	0.29
Silver (\$/Oz)	17.19	0.03	0.19
Copper(USD/lb.)	266.70	1.20	0.45
Brent Crude(USD/bbl)	55.16	-0.07	-0.13
USD/INR	67.94	-0.08	-0.13
USD/YEN	113.65	-0.12	-0.11
USD/EUR	1.0693	-0.0002	-0.02

Support/Resistance levels for Indian Equity Indices					
	S1	S2	CMP	R1	R2
Sensex	27710	27610	27849	27940	28040
Nifty	8590	8560	8632	8660	8690
Nifty (Fut)	8610	8580	8655	8680	8710

Pivot Level	
Sensex	27870
Nifty	8637

**US:** US market closed lower on Monday, notching their worst day of the year, as a new measure taken by the Trump administration on immigration sent jitters through the market. Technically DJIA is presently trading at the 5th leg through Elliot wave count with negative divergence in oscillators.



Increase in OI with Increase in Price (Long Buildup)						Increase in OI with Decrease in Price (Short Buildup)					
Symbol	Prev OI	Curr OI	OI Chg (%)	Curr Pr.	Pr.Ch g (%)	Symbol	Prev OI	Curr OI	OI Chg (%)	Curr Pr.	Pr.Chg (%)
CUMMI						INFRATE					
NSIND	826	985	19.3	852.25	0.4	L	3555	4651	30.8	329.35	[7.6]
BHARTI						MRF	2053	2264	10.3	52101	[2.7]
ARTL	20117	23074	14.7	345.8	6.9	BAJAJ-AUTO	5602	5870	4.8	2848.9	[0.3]
IDEA	15325	17571	14.7	97.25	26.9	AUROP					
BEL	4521	5164	14.2	1591.35	3.1	HARMA	13249	13619	2.8	699.45	[2.3]
BAJFINA						DISHTV	5192	5325	2.6	88.55	[0.6]
NCE	11992	13489	12.5	1059.9	6						

Nifty declined by 0.10% with Nifty future added 5.9 lakh shares in open interest and stock future shaded 44.0 Lakh shares in open interest.

- Nifty PCR decreased to 0.96 from 0.99
- Total Nifty Calls added 49.3 lakh shares in open interest.
- Total Nifty Puts added 34.1 lakh shares in open interest.
- Maximum open interest (Nifty) in Calls for Jan series is at 9000 and 8400 put.
- FII's bought net Rs.607.36 Cr(provisional), while DIIs bought net Rs.40.04 Cr in cash market.
- FII bought net Rs.138.58 Cr in F&O
- Securities in Ban Period: IBREALEST & JINDALSTELNIL

## Nifty Tracker

PARTICULARS	30/01/2017	27/01/2017	25/01/2017	24/01/2017
Spot	8632.75	8641.25	8602.75	8475.8
% Change in Spot	-0.10%	0.45%	1.50%	1.00%
Nifty(FUT) Feb	8655.35	8671.1	8614.85	8509.6
Nifty(FUT) Feb Vol.	91222	124832	174164	118150
Nifty(FUT) Feb - OI	19939950	19389450	18169050	12670725
Nifty(FUT) Mar	8682.8	8700.1	8636.1	0
Nifty(FUT) Mar Vol.	3315	6412	6268	0
Nifty(FUT) Mar - OI	1057575	1024650	979875	0

## Trade Statistics for 30/01/2017

PARTICULARS	NO. OF CONTRACTS	TURNOVER (RS. CR.)	PUT CALL RATIO
NSE Index Futures	1,55,544	10935	-
NSE Stock Futures	6,07,304	40647	-
NSE Index Options	19,00,076	1,35,040.43	-
NSE Stock Options	3,13,190	21399	0.46
NSE F&O Total Turnover	29,76,114	208,021	0.75
NSE Cash Turnover	-	19,950.67	-
BSE Cash Turnover	-	2,684.90	-
Total Turnover	-	230657	-

## FII Corner (F&O)

FII NET BUYING/SELLING & CHANGE IN OPEN INTEREST (Cr. Rupee)						
PARTICULARS	30/01/2017		27/01/2017		25/01/2017	
	Net Buying /Selling	Change In Open interest	Net Buying /Selling	Change In Open interest	Net Buying /Selling	Change In Open interest
Index Future	-369	584	586	1854	567	-7604
Index option	-137	7812	-264	5704	-364	-30838
Stock Future	516	833	71	2817	1441	-15318
Stock option	129	723	-36	2060	352	-7242
Total	139	9953	357	12434	1996	-61002

## Market Open Interest

ADDITION/REDUCTION IN MARKET OPEN INTEREST					
Contracts	30/01/2017	27/01/2017	25/01/2017	24/01/2017	23/01/2017
Index Futures	306	-6817	2847	2033	144
Index Options	410	-16377	4182	3736	4279
Stock Futures	10552	-64126	11378	3197	3670
Stock Options	2381	-15442	1312	-466	433
F&O Total	13650	-102762	19718.95	8500.02	8526.44

## Nifty Option Open Interest Statistics

NIFTY OPTIONS HIGHEST ADDITION IN OPEN INTEREST						
Expiry	Strike	Option Type	Settlement Price	Volume	Open Interest	Change In OI
23-Feb-17	9100	CE	13.8	62066	2694975	1139625
23-Feb-17	8500	PE	86.05	92615	3772275	1023825
23-Feb-17	9000	CE	23.7	89107	4520925	881475
23-Feb-17	8800	CE	74.1	93493	2976600	526350
23-Feb-17	8900	CE	43.15	76385	2838450	483450
23-Feb-17	8300	PE	42.7	50935	3568350	475650
23-Feb-17	9200	CE	8.15	39755	1965300	454575
23-Feb-17	8600	PE	119.3	89715	2911500	451875
30-Mar-17	8200	PE	56.75	7852	748650	309825
30-Mar-17	8900	CE	93.2	7501	641550	266250

NIFTY OPTIONS HIGHEST REDUCTION IN OPEN INTEREST						
Expiry	Strike	Option Type	Settlement Price	Volume	Open Interest	Change In OI
23-Feb-17	7900	PE	10.45	16648	1111275	-176625
23-Feb-17	8800	PE	217.15	6445	901425	-143250
30-Mar-17	8700	CE	180.65	3964	664425	-92325
30-Mar-17	8800	CE	132.6	5664	715950	-88575
23-Feb-17	8900	PE	285.95	5332	570975	-64500
23-Feb-17	8300	CE	390.75	3033	1493775	-43950
23-Feb-17	8700	CE	117.4	82906	2983200	-24675
23-Feb-17	8400	CE	310.85	3873	1459500	-23700
23-Feb-17	8100	CE	568.5	1961	737625	-22050
23-Feb-17	8500	CE	237.45	10340	2368425	-20250

## Stock Option Open Interest Statistics

STOCK OPTIONS WITH HIGHEST ADDITION IN OPEN INTEREST							
Symbol	Expiry	Strike	Option Type	Settl. Price	Volume	Open Interest	Change in OI
IDEA	23-Feb-17	100	CE	5.55	5791	5355000	5355000
RCOM	23-Feb-17	35	CE	1.95	4265	6504000	4284000
IDEA	23-Feb-17	80	PE	1.15	2672	3913000	3745000
RCOM	23-Feb-17	40	CE	0.7	2497	3996000	3408000
IDEA	23-Feb-17	90	PE	3.7	1871	3255000	3206000
JPASSOCIAT	23-Feb-17	15	CE	0.1	58	17680000	3128000
JPASSOCIAT	23-Feb-17	12.5	CE	0.4	243	18292000	3060000
NHPC	23-Feb-17	35	CE	0.2	178	6021000	3024000
IDEA	23-Feb-17	105	CE	3.95	3317	2688000	2688000
IDEA	23-Feb-17	85	PE	2.15	1352	2716000	2681000

STOCK OPTIONS WITH HIGHEST REDUCTION IN OPEN INTEREST							
Symbol	Expiry	Strike	Option Type	Settl. Price	Volume	Open Int.	Change in OI
IDEA	23-Feb-17	80	CE	17.8	1241	2688000	-1407000
IDEA	23-Feb-17	75	CE	22.5	406	742000	-1085000
RCOM	23-Feb-17	32.5	CE	3.2	1068	2436000	-1056000
ASHOKLEY	23-Feb-17	90	CE	5.05	160	2457000	-252000
ITC	23-Feb-17	260	CE	8.2	520	892800	-240000
IDEA	23-Feb-17	70	CE	27.25	73	609000	-224000
IDEA	23-Feb-17	77.5	CE	20.2	120	259000	-224000
ICICIBANK	23-Feb-17	250	PE	3.95	688	1532500	-205000
SAIL	23-Feb-17	62.5	CE	3.85	56	1116000	-204000
ASHOKLEY	23-Feb-17	85	PE	1.2	212	1806000	-196000

## Research Team

Name	Designation	Email ID	Contact No.
Paras Bothra	President Equity Research	paras@ashikagroup.com	+91 22 6611 1704
Krishna Kumar Agarwal	Equity Research Analyst	krishna.a@ashikagroup.com	+91 33 4036 0646
Partha Mazumder	Equity Research Analyst	partha.m@ashikagroup.com	+91 33 4036 0647
Arijit Malakar	Equity Research Analyst	amalakar@ashikagroup.com	+91 33 4036 0644
Kapil Jagasia, CFA	Equity Research Analyst	kapil.j@ashikagroup.com	+91 22 6611 1715
Tirthankar Das	Technical & Derivative Analyst	tirthankar.d@ashikagroup.com	+91 33 4036 0645

SEBI Registration No. INH000000206

### Disclosure

The Research Analysts and /or Ashika Stock Broking Limited do hereby certify that all the views expressed in this research report accurately reflect their views about the subject issuer(s) or securities. Moreover, they also certify the followings:-

- The Research Analyst or Ashika Stock Broking Limited or his/its Associates or his/its relative, has any financial interest in the subject company (ies) covered in this report. **Yes**
- The Research Analyst or Ashika Stock Broking Limited or his/its Associates or his/its relative, have actual/beneficial ownership of 1% or more in the subject company, at the end of the month immediately preceding the date of the publication of the research report. **No**
- The Research Analyst or Ashika Stock Broking Limited or his/its Associates or his/its relatives has any material conflict of interest at the time of publication of the research report. **No**
- The Research Analyst or Ashika Stock Broking Limited or his/its Associates have received compensation for investment banking or merchant banking or brokerage services or for product other than for investment banking or merchant banking or brokerage services from the companies covered in this report in the past 12 months. **No**
- The Research Analyst or Ashika Stock Broking Limited or his/its Associates have managed or co managed in the previous 12 months any private or public offering of securities for the company (ies) covered in this report. **No**
- The Research Analyst or Ashika Stock Broking Limited or his/its Associates have received any compensation or other benefits from the company (ies) covered in this report or any third party in connection with the Research Report. **No**
- The Research Analyst has served as an officer, director or employee of the company (ies) covered in the research report. **No**
- The Research Analyst or Ashika Stock Broking Limited has been engaged in Market making activity of the company (ies) covered in the research report. **No**

### Disclaimer

This report is for the personal information of the authorized recipient and does not construe to be any investment, legal or taxation advice to you. Ashika Stock Broking Ltd. is not soliciting any action based upon it. This report is not for public distribution and has been furnished to you solely for your information and should not be reproduced or redistributed to any other person in any form. The report is based upon information that we consider reliable, but we do not represent that it is accurate or complete, and it should not be relied upon such. Ashika Stock Broking Ltd. or any of its affiliates or employees shall not be in anyway responsible for any loss or damage that may arise to any person from any inadvertent error in the information contained in this report. Ashika Stock Broking Ltd., or any of its affiliates or employees do not provide, at any time, any express or implied warranty of any kind, regarding any matter pertaining to this report, including without limitation the implied warranties of merchantability, fitness for a particular purpose, and non-infringement. The recipients of this report should rely on their own investigations.