

Technical Report

Closing Brief

Benchmark Indices started the session on a muted note with Nifty opening slightly below the 9600 mark. Post which Nifty was seen trading with a sideways bias and settled the day higher by 19.65 points at 9624.55 levels.

Technical Build up

- ❖ Bullish candle with increase in volume
- ❖ Buy crossover in oscillators.
- ❖ Upper band of Bollinger exist at 9629
- ❖ Crucial moving average of 20/50 SMA are at 9433 and 9282
- ❖ 200 SMA trend deciding level exist at 8728

Outlook for the day

Indian Equity market ended almost unchanged in a dull trade yesterday, mirroring the last session's move. The arrival of monsoon ahead of IMD's schedule and the buoyancy to drive the consumption demand will keep the positive vibes in the market. On the technical front, Nifty slipped into consolidation mode and hence, it would be advisable to keep booking profits in the resistance zone of 9620 - 9720. In this consolidation phase, stock specific action is likely to continue which would offer better trading opportunities. Post breakout of Cup & Handle indicating target of 10,500 for medium term point of view hence investors need to hunt for buy opportunity at every meaningful decline. Immediate resistance placed around 9650 levels followed by 9700 levels while support is pegged around 9520-9530 levels. On the option front maximum Put OI is at 9400 and 9500 strike while maximum Call OI is at 9700 followed by 9600 strike.

Technical & Derivative Report

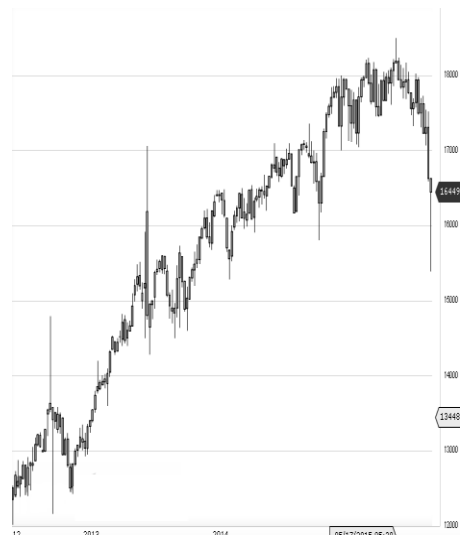
World Indices	LTP	Daily Ch(Pts)	Daily Ch(%)
Dow Jones	21029	-50	-0.24
Nasdaq	6203	-7	-0.11
S&P 500	2412	-2	-0.12
FTSE 100	7526	-21	-0.28
DAX	12598	-30	-0.24
Hang Seng	25758	56	0.22
Nikkei	19650	-27	-0.14
Sensex	31159	50	0.16
Nifty	9624	19	0.20

Commodity /Forex	LTP	Daily Ch(Pts)	Daily Ch(%)
Gold (\$/Oz)	1264.20	-1.50	-0.12
Silver (\$/Oz)	17.30	-0.13	-0.73
Copper(USD/lb.)	257.80	1.40	0.55
Brent Crude(USD/bbl)	51.72	-0.12	-0.23
USD/INR	64.66	0.16	0.26
USD/YEN	110.94	0.09	0.08
USD/EUR	1.1172	-0.0014	-0.13

Support/Resistance levels for Indian Equity Indices					
	S1	S2	CMP	R1	R2
Sensex	30915	30745	31159	31245	31410
Nifty	9550	9500	9624	9650	9700
Nifty (Fut)	9545	9495	9619	9645	9695

Pivot Level		
Sensex		31147
Nifty		9613

US: US market closed lower on Tuesday as investors digested key economic data, but a rise in tech stocks helped cap losses. Technically DJIA is presently trading at the 5th leg through Elliot wave count with negative divergence in oscillators.



Increase in OI with Increase in Price (Long Buildup)						Increase in OI with Decrease in Price (Short Buildup)					
Symbol	Prev OI	Curr OI	OI Chg (%)	Curr Pr.	Pr.Chg (%)	Symbol	Prev OI	Curr OI	OI Chg (%)	Curr Pr.	Pr.Chg (%)
RECLTD	2937000	4198200				JUBLFO					
RAMCO	0	0	42.9	205.9	4.2	OD	2138500	2930000	37	904.1	[3.7]
CEM	80800	98400	21.8	694	1.4	BERGEP					
M&M	3088500	3488500	13	1373.8	0.7	AINT	728200	884400	21.5	258.1	[0.1]
NIITTEC						CHOLAF					
H	616500	691500	12.2	528.45	2.3	IN	156000	187500	20.2	1006	[3.0]
GODREJI						ARE	2490000	2970000	19.3	234.05	[5.8]
ND	1746000	1957500	12.1	616.2	4.8		3740500	4308000			
						BHEL	0	0	15.2	140.6	[8.9]

Nifty gained by 0.20% with Nifty future added 3.8 lakh shares in open interest and stock future added 595.2 Lakh shares in open interest.

- Nifty PCR increased to 1.13 from 1.12
- Total Nifty Calls added 17.1 lakh shares in open interest.
- Total Nifty Puts added 20.7 lakh shares in open interest.
- Maximum open interest (Nifty) in Calls for May series is at 9700 and 9400 put.
- FII's sold net Rs.217.1 Cr(provisional), while DIIs bought net Rs.366.97 Cr in cash market.
- FII bought net Rs.1394.02Cr in F&O
- Securities in Ban Period: RCOM

Nifty Tracker

PARTICULARS	30/05/2017	29/05/2017	26/05/2017	25/05/2017
Spot	9624.55	9604.9	9595.1	9509.75
% Change in Spot	0.20%	0.10%	0.90%	1.59%
Nifty(FUT) June	9619.85	9605.7	9575.8	9495.9
Nifty(FUT) June Vol.	82581	144402	122805	169833
Nifty(FUT) June - OI	20798775	20496450	18961125	1203379.44
Nifty(FUT) July	9642.7	9620.9	9589.95	9509.6
Nifty(FUT) July Vol.	2650	4506	4501	6912
Nifty(FUT) July - OI	1068225	1018275	953775	940875

Trade Statistics for 30/05/2017

PARTICULARS	NO. OF CONTRACTS	TURNOVER (RS. CR.)	PUT CALL RATIO
NSE Index Futures	1,39,551	11168	-
NSE Stock Futures	6,95,156	48150	-
NSE Index Options	32,97,236	2,82,084.78	-
NSE Stock Options	4,19,565	30841	0.5
NSE F&O Total Turnover	45,51,508	372,243	0.85
NSE Cash Turnover	-	24,187.03	-
BSE Cash Turnover	-	3,473.48	-
Total Turnover	-	399903	-

FII Corner (F&O)

FII NET BUYING/SELLING & CHANGE IN OPEN INTEREST (Cr. Rupee)						
PARTICULARS	30/05/2017		29/05/2017		26/05/2017	
	Net Buying /Selling	Change In Open interest	Net Buying /Selling	Change In Open interest	Net Buying /Selling	Change In Open interest
Index Future	36	439	1208	1914	884	-893
Index option	230	741	1032	1256	2446	6218
Stock Future	829	1558	-299	65	-68	2474
Stock option	299	803	42	987	328	2559
Total	1394	3541	1983	4222	3590	10358

Market Open Interest

ADDITION/REDUCTION IN MARKET OPEN INTEREST					
Contracts	30/05/2017	29/05/2017	26/05/2017	25/05/2017	24/05/2017
Index Futures	593	1500	-11312	4304	922
Index Options	1918	158	-21382	6702	-1587
Stock Futures	7747	11234	-60845	9588	2185
Stock Options	1647	1881	-16287	354	-355
F&O Total	11904	14774	-109825.91	20947.77	1164.44

Nifty Option Open Interest Statistics

NIFTY OPTIONS HIGHEST ADDITION IN OPEN INTEREST						
Expiry	Strike	Option Type	Settlement Price	Volume	Open Interest	Change In OI
29-Jun-17	9500	PE	70.65	117561	4914375	618900
29-Jun-17	10000	CE	8.3	56770	2187825	361825
29-Jun-17	9600	PE	103.9	85101	2669400	308025
29-Jun-17	9700	CE	71.3	123458	4210725	300825
27-Jul-17	10000	CE	29.65	10082	758850	269025
29-Jun-17	9800	CE	37.1	95897	3475500	213675
27-Jul-17	10000	PE	377.1	2838	372225	169050
29-Jun-17	9900	CE	17.5	63482	1634250	127500
27-Jul-17	10500	PE	837.7	2170	257775	122475
29-Jun-17	9650	CE	94.35	13477	379875	122400

NIFTY OPTIONS HIGHEST REDUCTION IN OPEN INTEREST						
Expiry	Strike	Option Type	Settlement Price	Volume	Open Interest	Change In OI
27-Jun-19	9000	PE	410	2029	457050	-151950
29-Jun-17	8800	CE	821.1	2863	445575	-140850
29-Jun-17	7500	CE	2106.2	1199	1033800	-78750
29-Jun-17	8900	PE	8	8398	815100	-56550
29-Jun-17	9000	CE	624.9	993	1082925	-45675
29-Jun-17	9200	CE	436.75	1040	527175	-39750
29-Jun-17	9300	CE	348.05	2872	1176225	-33075
29-Jun-17	8500	CE	1113	542	678900	-27300
29-Jun-17	9100	PE	15.25	16842	1661925	-22050
29-Jun-17	8500	PE	3.65	3450	1017000	-21450

Stock Option Open Interest Statistics

STOCK OPTIONS WITH HIGHEST ADDITION IN OPEN INTEREST							
Symbol	Expiry	Strike	Option Type	Settl. Price	Volume	Open Interest	Change in OI
RCOM	29-Jun-17	30	CE	0.15	1175	7800000	3216000
RCOM	29-Jun-17	22.5	CE	1	2821	6756000	2892000
RCOM	29-Jun-17	25	CE	0.55	3618	12408000	2760000
DLF	29-Jun-17	185	CE	8.35	2223	3740000	2450000
RCOM	29-Jun-17	20	CE	1.85	1041	4680000	2364000
BHEL	29-Jun-17	150	CE	2.85	2873	2695000	2320000
JPASSOCIAT	29-Jun-17	12.5	CE	0.9	362	10608000	2312000
SUZLON	29-Jun-17	20	CE	0.65	522	25860000	2250000
IFCI	29-Jun-17	27.5	CE	0.45	252	6666000	2178000
SUZLON	29-Jun-17	22.5	CE	0.25	161	23760000	1650000

STOCK OPTIONS WITH HIGHEST REDUCTION IN OPEN INTEREST							
Symbol	Expiry	Strike	Option Type	Settl. Price	Volume	Open Int.	Change in OI
PFC	29-Jun-17	135	PE	4.95	733	930000	-1290000
PFC	29-Jun-17	140	PE	7.5	660	1128000	-972000
HINDALCO	29-Jun-17	200	CE	10.95	1437	1064000	-892500
VEDL	29-Jun-17	230	PE	4.45	1997	1771000	-616000
DLF	29-Jun-17	220	CE	0.9	524	1535000	-435000
BHEL	29-Jun-17	150	PE	12.2	376	855000	-430000
ASHOKLEY	29-Jun-17	95	CE	3.1	1056	4333000	-427000
BHEL	29-Jun-17	165	CE	0.9	1039	1460000	-405000
SUZLON	29-Jun-17	25	CE	0.1	100	13350000	-390000
ASHOKLEY	29-Jun-17	90	CE	5.65	206	1883000	-385000

Research Team

Name	Designation	Email ID	Contact No.
Paras Bothra	President Equity Research	paras@ashikagroup.com	+91 22 6611 1704
Krishna Kumar Agarwal	Equity Research Analyst	krishna.a@ashikagroup.com	+91 33 4036 0646
Partha Mazumder	Equity Research Analyst	partha.m@ashikagroup.com	+91 33 4036 0647
Arijit Malakar	Equity Research Analyst	amalakar@ashikagroup.com	+91 33 4036 0644
Kapil Jagasia, CFA	Equity Research Analyst	kapil.j@ashikagroup.com	+91 22 6611 1715
Tirthankar Das	Technical & Derivative Analyst	tirthankar.d@ashikagroup.com	+91 33 4036 0645

Ashika Stock Broking Limited ("ASBL") or Research Entity has started its journey in the year 1994 and is engaged in the business of broking services, depository services, distributor of financial products (Mutual fund, IPO & Bonds). This research report has been prepared and distributed by ASBL in the sole capacity of a Research Analyst (Reg No. INH000000206) of SEBI (Research Analyst) Regulations 2014. ASBL is a wholly owned subsidiary of Ashika Global Securities (P) Ltd., a RBI registered non-deposit taking NBFC Company. Ashika group (details is enumerated on our website www.ashikagroup.com) is an integrated financial service provider inter alia engaged in the business of Investment Banking, Corporate Lending, Commodity Broking, Debt Syndication & Other Advisory Services.

There were no significant and material disciplinary actions against ASBL taken by any regulatory authority during last three years.

Disclosure

ASBL or its associates, its Research Analysts (including their relatives) may have financial interest in the subject company(ies). However, the said financial interest is not limited to having an open stock market position in /acting as advisor to /having a loan transaction with the subject company(ies) apart from registration as clients.

- ASBL or its Research Analysts (including their relatives) do not have any actual / beneficial ownership of 1% or more of securities of the subject company(ies) at the end of the month immediately preceding the date of publication of this report or date of the public appearance. However ASBL's associates may have actual / beneficial ownership of 1% or more of securities of the subject company(ies).
- ASBL or their Research Analysts (including their relatives) do not have any other material conflict of interest at the time of publication of this research report or date of the public appearance. However ASBL's associates might have an actual / potential conflict of interest (other than ownership).
- ASBL or its associates may have received compensation for investment banking, merchant banking, and brokerage services and for other products and services from the subject companies during the preceding 12 months. However, ASBL or its associates or its Research analysts (forming part of Research Desk) have not received any compensation or other benefits from the subject companies or third parties in connection with the research report. Moreover, Research Analysts have not received any compensation from the companies mentioned herein in the past twelve months.
- ASBL or their Research Analysts have not managed or co-managed public offering of securities for the subject company(ies) in the past twelve months. However ASBL's associates may have managed or co-managed public offering of securities for the subject company(ies) in the past twelve months.
- Research Analysts have not served as an officer, director or employee of the companies mentioned in the report.
- Neither ASBL nor its Research Analysts have been engaged in market making activity for the companies mentioned in the report.

Disclaimer

The research recommendation and information herein are solely for the personal information of the authorized recipient and does not construe to be an offer documents or any investment, legal or taxation advice or solicitation of any action based upon it. This report is not for public distribution or use by any person or entity, where such distribution, publication, availability or use would be contrary to law, regulation or subject to any registration or licensing requirement. We will not treat recipients as customer by virtue of their receiving this report. The report is based upon the information obtained from public sources that we consider reliable, but we do not guarantee its accuracy or completeness. ASBL shall not be in anyways responsible for any loss or damage that may arise to any such person from any inadvertent error in the information contained in this report. The recipients of this report should rely on their own investigations.