

Technical Report

Closing Brief

Benchmark indices in previous session fell heavily amid geopolitical tensions further escalating as North Korean leader Kim Jong Un threatened again to test hydrogen bomb in the Pacific, while the rupee hit its weakest point since early April. Nifty finally ended at 9964.40 levels down by 157.50 points or - 1.56%.

Technical Build up

- ❖ Bearish candle with decrease in volume
- ❖ Sell crossover in oscillators.
- ❖ Lower band of Bollinger exist at 9797
- ❖ Crucial moving average of 20/50 SMA are at 10000 and 9953
- ❖ 200 SMA trend deciding level exist at 9235

Outlook for the day

Indian Equity market posted their biggest daily percentage decline in 10 months on Friday, as a North Korean threat to carry out a hydrogen bomb test in the Pacific Ocean rattled global markets. Government's stimulus spending plan and jitters that it would widen the fiscal deficit also contributed to the decline. On the technical front, Nifty formed a strong bearish candle after a Hammer-like formation suggests that markets are likely to remain under pressure for some more time. On the weekly time frame, it formed a Bearish Engulfing pattern as it snapped the entire gains of last week and closed below previous week's low levels. Momentum oscillator RSI has given a negative crossover from its overbought zone and has sneaked below the 70 levels. Hence indicating that the index is unlikely to see any significant upmove in near term till it holds below psychological 10000 mark. On the option front concentration has been shifted heavily at the 10100-strike calls while among put options, the 9900-strike has the highest open interest. The put-call ratio of open interest closed down at 1.40 from 1.44 levels indicating call writing

Technical & Derivative Report

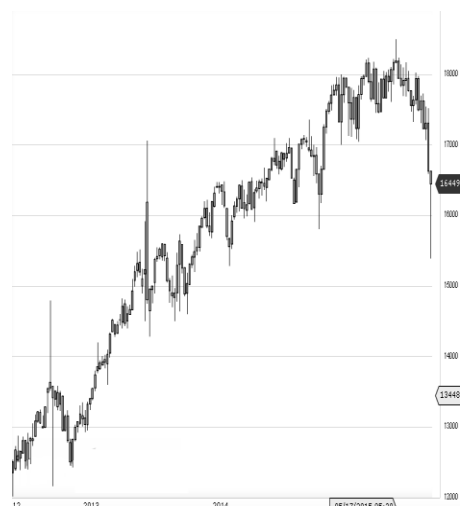
World Indices	LTP	Daily Ch(Pts)	Daily Ch(%)
Dow Jones	22349	-9	-0.04
Nasdaq	6426	4	0.07
S&P 500	2502	1	0.06
FTSE 100	7310	46	0.64
DAX	12592	-7	-0.06
Hang Seng	27666	-214	-0.77
Nikkei	20407	111	0.55
Sensex	31922	-447	-1.38
Nifty	9964	-157	-1.56

Commodity /Forex	LTP	Daily 1.1Ch(Pts)	Daily Ch(%)
Gold (\$/Oz)	1296.60	-0.90	-0.07
Silver (\$/Oz)	16.99	0.00	0.01
Copper(USD/lb.)	295.05	0.60	0.20
Brent			
Crude(USD/bbl)	56.82	-0.04	-0.07
USD/INR	64.80	0.0012	0.00
USD/YEN	112.39	0.40	0.36
USD/EUR	1.1928	-0.0023	-0.19

Support/Resistance levels for Indian Equity Indices					
	S1	S2	CMP	R1	R2
Sensex	31740	31575	31922	32080	32245
Nifty	9910	9860	9964	10012	10062
Nifty (Fut)	9930	9880	9982	10032	10082

Pivot Level	
Sensex	32050
Nifty	10040

US: US Market closed narrowly mixed Friday as health care stocks recovered most of their losses. The Dow closed out its second consecutive week of gains, up 0.4 percent on the week. Technically DJIA is presently trading at the 5th leg through Elliot wave count with negative divergence in oscillators.



Increase in OI with Increase in Price (Long Buildup)						Increase in OI with Decrease in Price (Short Buildup)							
Symbol	Prev OI	Curr OI	OI Chg (%)	Curr Pr.	Pr.Chg (%)	Symbol	Prev OI	Curr OI	OI Chg (%)	Curr Pr.	Pr.Chg (%)		
TATAMOTORS	3811050	3975300	0	4.3	415	0.4	JINDALS	3654000	4063950	0	11.2	140.45 [7.5]	
HCLTECH	7480900	7623700	1.9	885.5	1.3	PVR	761200	828400	8.8	1223.45 [4.8]			
UBL	898100	912800	1.6	813.25	1.1	YESBAN	3691450	3982125	0	7.9	360.55 [4.3]		
WIPRO	2946000	2983920	0	1.3	293.9	0.7	K	0	0	7	19000 [1.0]		
							PAGEIN	27000	28900	2564400	2742000	6.9	34.95 [5.8]
							D	0	0				

Nifty declined by 1.56% with Nifty future added 5.5 lakh shares in open interest and stock future added 390.4 Lakh shares in open interest.

- Nifty PCR decreased to 1.24 from 1.51
- Total Nifty Calls added 100.8 lakh shares in open interest.
- Total Nifty Puts shaded 45.4 lakh shares in open interest.
- Maximum open interest (Nifty) in Calls for July series is at 10200 and 9900 put.
- FII's sold net Rs.1241.73 Cr(provisional), while DIIs bought net Rs.521.17 Cr in cash market.
- FII bought net Rs.817.43 Cr in F&O
- Securities in Ban Period: BEML, DHFL, DLF, HDIL, IBREALEST , ICIL, INDIACEM, INFIBEAM, JSWENERGY , RCOM & WOCKPHARMA

Nifty Tracker

PARTICULARS	22/09/2017	21/09/2017	20/09/2017	19/09/2017
Spot	9964.4	10121.9	10141.15	10147.55
% Change in Spot	-1.56%	-0.19%	-0.06%	-0.05%
Nifty(FUT) Sep	9982.95	10138.85	10167.55	10168.85
Nifty(FUT) Sep Vol.	163490	118162	52238	60582
Nifty(FUT) Sep - OI	20471625	20652900	20887125	20507700
Nifty(FUT) Oct	10021.7	10174.75	10201.25	10201.8
Nifty(FUT) Oct Vol.	26169	15479	6097	4040
Nifty(FUT) Oct - OI	2622975	1900650	1312425	1121025

Trade Statistics for 22/09/2017

PARTICULARS	NO. OF CONTRACTS	TURNOVER (RS. CR.)	PUT CALL RATIO
NSE Index Futures	2,91,584	24192	-
NSE Stock Futures	9,17,779	67794	-
NSE Index Options	66,79,824	5,52,474.68	-
NSE Stock Options	6,91,499	55250	0.52
NSE F&O Total Turnover	85,80,686	699,711	0.94
NSE Cash Turnover	-	30,086.39	-
BSE Cash Turnover	-	3,927.86	-
Total Turnover	-	733725	-

FII Corner (F&O)

FII NET BUYING/SELLING & CHANGE IN OPEN INTEREST (Cr. Rupee)						
PARTICULARS	22/09/2017		21/09/2017		20/09/2017	
	Net Buying /Selling	Change In Open interest	Net Buying /Selling	Change In Open interest	Net Buying /Selling	Change In Open interest
Index Future	1688	-72	-376	1013	-469	879
Index option	-635	487	306	-409	831	1541
Stock Future	-126	-1472	-103	-517	129	-635
Stock option	-110	-242	-2	263	-33	292
Total	817	-1299	-175	350	458	2076

Market Open Interest

ADDITION/REDUCTION IN MARKET OPEN INTEREST					
Contracts	22/09/2017	21/09/2017	20/09/2017	19/09/2017	18/09/2017
Index Futures	-424	250	381	63	41
Index Options	-3806	-146	553	1201	2165
Stock Futures	-18793	14353	4840	6839	6302
Stock Options	464	490	918	754	1269
F&O Total	-22559	14946	6691.42	8857.14	9777.16

Nifty Option Open Interest Statistics

NIFTY OPTIONS HIGHEST ADDITION IN OPEN INTEREST						
Expiry	Strike	Option Type	Settlement Price	Volume	Open Interest	Change In OI
28-Sep-17	10000	CE	53.6	312574	4155750	2338875
28-Sep-17	10100	CE	19.15	556032	5644425	1868475
28-Sep-17	10200	CE	6.25	467904	6443775	1275225
28-Sep-17	10050	CE	31.7	116771	1553175	1083150
28-Sep-17	10150	CE	10.55	149503	1736250	758025
26-Oct-17	9600	PE	38.5	19035	1261875	537525
26-Oct-17	10200	CE	58.6	45285	1433100	493200
26-Oct-17	9800	PE	70.35	26891	1338750	482550
26-Oct-17	10000	CE	150.35	21494	1067325	462600
28-Sep-17	9950	PE	48.8	97984	1060050	414600

NIFTY OPTIONS HIGHEST REDUCTION IN OPEN INTEREST						
Expiry	Strike	Option Type	Settlement Price	Volume	Open Interest	Change In OI
28-Sep-17	10100	PE	129.4	291259	1391250	-2545725
28-Sep-17	10000	PE	68.25	551241	3883200	-1295175
28-Sep-17	9900	PE	34.15	360833	4217475	-1194975
28-Sep-17	10150	PE	170.35	29605	381825	-765225
28-Sep-17	10200	PE	214.4	69103	935025	-646500
28-Sep-17	10050	PE	95.7	87008	693150	-540225
28-Sep-17	9800	PE	17.95	202374	3112125	-439200
28-Sep-17	8000	CE	1983.2	4852	1876500	-323775
28-Sep-17	10300	PE	306.15	9651	452775	-184725
28-Sep-17	10400	CE	0.9	66083	2055675	-175875

Stock Option Open Interest Statistics

STOCK OPTIONS WITH HIGHEST ADDITION IN OPEN INTEREST							
Symbol	Expiry	Strike	Option Type	Settl. Price	Volume	Open Interest	Change in OI
DLF	28-Sep-17	180	CE	1.7	2798	2930000	2545000
GMRINFRA	26-Oct-17	20	CE	0.35	58	3690000	2205000
HINDALCO	28-Sep-17	240	CE	1.6	2987	2996000	2110500
SAIL	28-Sep-17	60	CE	0.4	491	2484000	1872000
SUZLON	26-Oct-17	17.5	CE	0.7	190	4830000	1770000
SOUTHBANK	28-Sep-17	30	CE	0.5	243	6495636	1690191
DLF	28-Sep-17	175	CE	3.15	658	1555000	1530000
BHEL	28-Sep-17	135	CE	0.75	1938	5555000	1345000
SBIN	28-Sep-17	265	CE	2.3	1934	1587000	1296000
ICICIBANK	28-Sep-17	285	CE	1.3	2259	2059750	1278750

STOCK OPTIONS WITH HIGHEST REDUCTION IN OPEN INTEREST							
Symbol	Expiry	Strike	Option Type	Settl. Price	Volume	Open Int.	Change in OI
RCOM	28-Sep-17	25	CE	0.05	409	12544000	-3920000
RCOM	28-Sep-17	22.5	CE	0.1	271	6902000	-1372000
IDFC	28-Sep-17	65	CE	0.2	382	5346000	-1201200
SUZLON	28-Sep-17	17.5	CE	0.15	644	33510000	-1200000
RCOM	28-Sep-17	20	PE	0.75	184	4382000	-1036000
DLF	28-Sep-17	185	PE	12.35	555	695000	-825000
SBIN	28-Sep-17	300	CE	0.1	700	8220000	-786000
FEDERALBNK	28-Sep-17	115	PE	2.25	463	1529000	-704000
SOUTHBANK	28-Sep-17	32.5	CE	0.15	435	11168517	-695961
TATASTEEL	28-Sep-17	680	PE	27.7	1178	678000	-676000

Research Team

Name	Designation	Email ID	Contact No.
Paras Bothra	President Equity Research	paras@ashikagroup.com	+91 22 6611 1704
Sanjeev Jain	AVP Equity Research	sanjeev.j@ashikagroup.com	+91 33 4036 0650
Krishna Kumar Agarwal	Equity Research Analyst	krishna.a@ashikagroup.com	+91 33 4036 0646
Partha Mazumder	Equity Research Analyst	partha.m@ashikagroup.com	+91 33 4036 0647
Arijit Malakar	Equity Research Analyst	amalakar@ashikagroup.com	+91 33 4036 0644
Kapil Jagasia	Equity Research Analyst	kapil.j@ashikagroup.com	+91 22 6611 1715
Tirthankar Das	Technical & Derivative Analyst	tirthankar.d@ashikagroup.com	+91 33 4036 0645

Ashika Stock Broking Limited ("ASBL") or Research Entity has started its journey in the year 1994 and is engaged in the business of broking services, depository services, distributor of financial products (Mutual fund, IPO & Bonds). This research report has been prepared and distributed by ASBL in the sole capacity of a Research Analyst (Reg No. INH00000206) of SEBI (Research Analyst) Regulations 2014. ASBL is a wholly owned subsidiary of Ashika Global Securities (P) Ltd., a RBI registered non-deposit taking NBFC Company. Ashika group (details is enumerated on our website www.ashikagroup.com) is an integrated financial service provider inter alia engaged in the business of Investment Banking, Corporate Lending, Commodity Broking, Debt Syndication & Other Advisory Services.

There were no significant and material disciplinary actions against ASBL taken by any regulatory authority during last three years.

Disclosure

ASBL or its associates, its Research Analysts (including their relatives) may have financial interest in the subject company(ies). However, the said financial interest is not limited to having an open stock market position in /acting as advisor to /having a loan transaction with the subject company(ies) apart from registration as clients.

- 1) ASBL or its Research Analysts (including their relatives) do not have any actual / beneficial ownership of 1% or more of securities of the subject company(ies) at the end of the month immediately preceding the date of publication of this report or date of the public appearance. However ASBL's associates may have actual / beneficial ownership of 1% or more of securities of the subject company(ies).
- 2) ASBL or their Research Analysts (including their relatives) do not have any other material conflict of interest at the time of publication of this research report or date of the public appearance. However ASBL's associates might have an actual / potential conflict of interest (other than ownership).
- 3) ASBL or its associates may have received compensation for investment banking, merchant banking, and brokerage services and for other products and services from the subject companies during the preceding 12 months. However, ASBL or its associates or its Research analysts (forming part of Research Desk) have not received any compensation or other benefits from the subject companies or third parties in connection with the research report. Moreover, Research Analysts have not received any compensation from the companies mentioned herein in the past twelve months.
- 4) ASBL or their Research Analysts have not managed or co-managed public offering of securities for the subject company(ies) in the past twelve months. However ASBL's associates may have managed or co-managed public offering of securities for the subject company(ies) in the past twelve months.
- 5) Research Analysts have not served as an officer, director or employee of the companies mentioned in the report.
- 6) Neither ASBL nor its Research Analysts have been engaged in market making activity for the companies mentioned in the report.

Disclaimer

The research recommendation and information herein are solely for the personal information of the authorized recipient and does not construe to be an offer documents or any investment, legal or taxation advice or solicitation of any action based upon it. This report is not for public distribution or use by any person or entity, where such distribution, publication, availability or use would be contrary to law, regulation or subject to any registration or licensing requirement. We will not treat recipients as customer by virtue of their receiving this report. The report is based upon the information obtained from public sources that we consider reliable, but we do not guarantee its accuracy or completeness. ASBL shall not be in anyways responsible for any loss or damage that may arise to any such person from any inadvertent error in the information contained in this report. The recipients of this report should rely on their own investigations.