

Technical Report

Closing Brief

Markets inched up firmly amid SBI's saving bank account interest cut ahead of RBI credit policy. Nifty closed at 10077.10 up by 62.60 points or 0.63 %..

Technical Build up

- ❖ Bullish candle with increase in volume
- ❖ Buy crossover in oscillators.
- ❖ Upper band of Bollinger exist at 10103
- ❖ Crucial moving average of 20/50 SMA are at 9838 and 9681
- ❖ 200 SMA trend deciding level exist at 8936

Outlook for the day

Indian Equity market gained over half a percent and settled around the day's high amid hope of rate cut in upcoming policy review meet. Good quarterly results and recovery in the Asian and European markets lifted market. PSU Banking stocks lead the rally after the bank major SBI announced cut in savings account interest rate by 50bps for balances below Rs10m to 3.5%. On the technical front, Nifty formed bullish candle on the daily charts suggesting that the market witnessed sustained buying interest. The monthly chart, indicates that nifty has now finally reached the 'Upward Sloping trend Line' level of 10040. This coincides with the 100% 'Price Extension' of the previous up move from 7893.80. while on the downside . It has been respecting to its rising support trend line by connecting the recent swing lows of 9543, 9646, 9838 and 9944. Going ahead immediate support around 10000 levels and next support is at 9940 levels. Immediate resistance is there around 10110 and next resistance is around 10200. On the option front maximum Put OI is at 10000 followed by 9800 strike while maximum Call OI is at 10500 followed by 10100 strike. Call writing was seen at strike prices of 10400 followed by 10500 while Put Writing was seen at strike prices of 9900 followed by strike prices of 10000

Technical & Derivative Report

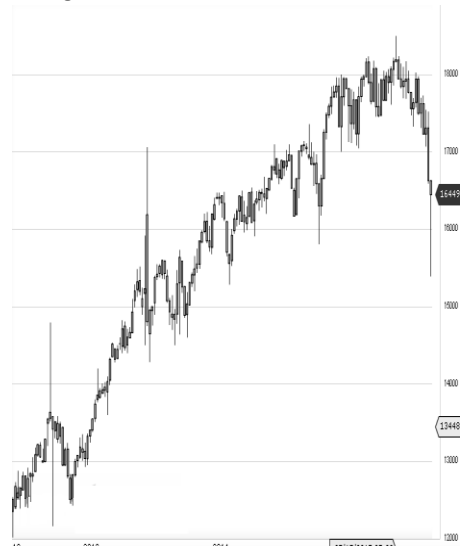
World Indices	LTP	Daily Ch(Pts)	Daily Ch(%)
Dow Jones	21891	60	0.28
Nasdaq	6348	-26	-0.42
S&P 500	2470	-1	-0.07
FTSE 100	7372	3	0.05
DAX	12118	-44	-0.37
Hang Seng	27448	124	0.46
Nikkei	19999	73	0.36
Sensex	32514	205	0.63
Nifty	10077	62	0.63

Commodity /Forex	LTP	Daily Ch(Pts)	Daily Ch(%)
Gold (\$/Oz)	1274.10	0.70	0.05
Silver (\$/Oz)	16.80	0.01	0.05
Copper(USD/lb.)	288.80	-0.35	-0.12
Brent Crude(USD/bbl)	52.81	0.09	0.17
USD/INR	64.18	0.03	0.05
USD/YEN	110.30	0.04	0.04
USD/EUR	1.1826	-0.0016	-0.14

Support/Resistance levels for Indian Equity Indices					
	S1	S2	CMP	R1	R2
Sensex	32250	32060	32514	32625	32920
Nifty	10000	9940	10077	10110	10200
Nifty (Fut)	10025	9965	10103	10135	10225

Pivot Level	
Sensex	32416
Nifty	10059

US: US market closed at a record high on Monday as Wall Street cheered on what's been a strong earnings season. Technically DJIA is presently trading at the 5th leg through Elliot wave count with negative divergence in oscillators.



Increase in OI with Increase in Price (Long Buildup)						Increase in OI with Decrease in Price (Short Buildup)					
Symbol	Prev OI	Curr OI	OI Chg (%)	Curr Pr.	Pr.Ch g (%)	Symbol	Prev OI	Curr OI	OI Chg (%)	Curr Pr.	Pr.Ch g (%)
TORNTP						VGUAR					
HARM	204800	314400	53.5	1307.6	4.9	D	3411000	4833000	41.7	177	[9.0]
POWER		1184000				INFRATE					
GRID	9360000	0	26.5	224.25	4.5	L	5076200	6307000	24.3	403.1	[0.3]
	2074800	2556450				GODREJ					
SINTEX	0	0	23.2	37.5	2.9	CP	1269600	1518400	19.6	1038.4	[1.6]
SHREEC						LUPIN	6998800	8130400	16.2	1038.85	[2.8]
EM	32350	39100	20.9	18855.05	7.2	ICIL	8592500	9681000	12.7	148.75	[5.6]
INFIBEAM											
M	1658400	2000000	20.6	1425.75	8.6						

Nifty gained by 0.63% with Nifty future added 6.6 lakh shares in open interest and stock future shaded 1003.1 Lakh shares in open interest.

- Nifty PCR increased to 1.28 from 1.22
- Total Nifty Calls shaded 0.5 lakh shares in open interest.
- Total Nifty Puts added 32.7 lakh shares in open interest.
- Maximum open interest (Nifty) in Calls for July series is at 10500 and 10000 put.
- FII's sold net Rs.1196.94 Cr(provisional), while DIIs bought net Rs.1768.43 Cr in cash market.
- FII bought net Rs.1396.76 Cr in F&O
- Securities in Ban Period: IBREALEST, INFIBEAM & JSWENERGY

Nifty Tracker

PARTICULARS	31/07/2017	28/07/2017	27/07/2017	26/07/2017
Spot	10077.1	10014.5	10020.55	10020.65
% Change in Spot	0.63%	-0.06%	0.00%	0.56%
Nifty(FUT) Aug	10103	10042.25	10063.45	10065
Nifty(FUT) Aug Vol.	68518	138647	180853	79146
Nifty(FUT) Aug - OI	20028750	19407600	16468650	11505300
Nifty(FUT) Sep	10134.6	10075.9	10093.95	0
Nifty(FUT) Sep Vol.	1883	3580	6059	0
Nifty(FUT) Sep - OI	826725	804975	749550	0

Trade Statistics for 31/07/2017

PARTICULARS	NO. OF CONTRACTS	TURNOVER (RS. CR.)	PUT CALL RATIO
NSE Index Futures	1,31,269	11403	-
NSE Stock Futures	6,80,302	50783	-
NSE Index Options	26,50,839	2,42,781.04	-
NSE Stock Options	4,32,964	33680	0.45
NSE F&O Total Turnover	38,95,374	338,648	0.82
NSE Cash Turnover	-	28,679.90	-
BSE Cash Turnover	-	3,689.18	-
Total Turnover	-	371017	-

FII Corner (F&O)

FII NET BUYING/SELLING & CHANGE IN OPEN INTEREST (Cr. Rupee)						
PARTICULARS	31/07/2017		28/07/2017		27/07/2017	
	Net Buying /Selling	Change In Open interest	Net Buying /Selling	Change In Open interest	Net Buying /Selling	Change In Open interest
Index Future	-426	858	-1744	2388	2097	-11140
Index option	1281	3416	539	4450	-2062	-33047
Stock Future	202	1430	150	1838	-610	-12248
Stock option	340	1209	197	2666	167	-8540
Total	1397	6913	-858	11342	-408	-64976

Market Open Interest

ADDITION/REDUCTION IN MARKET OPEN INTEREST					
Contracts	31/07/2017	28/07/2017	27/07/2017	26/07/2017	25/07/2017
Index Futures	1218	-7315	-189	1785	535
Index Options	3090	-18727	5380	1098	1131
Stock Futures	7801	-70520	10049	4394	7289
Stock Options	2033	-14658	1017	-616	423
F&O Total	14142	-111220	16257.71	6660.5	9377.91

Nifty Option Open Interest Statistics

NIFTY OPTIONS HIGHEST ADDITION IN OPEN INTEREST						
Expiry	Strike	Option Type	Settlement Price	Volume	Open Interest	Change In OI
31-Aug-17	9900	PE	61.8	69385	3943875	797400
31-Aug-17	10000	PE	87.7	96456	4357500	704475
31-Aug-17	10100	PE	122.35	30487	1301325	396450
31-Aug-17	9600	PE	21.6	29296	2607750	189450
28-Sep-17	10500	PE	390.75	3015	524400	173025
31-Aug-17	10400	CE	20.75	45763	2760075	156900
31-Aug-17	10300	PE	236.25	3541	312825	154875
31-Aug-17	10500	CE	9.6	38617	3310500	138975
28-Sep-17	9500	PE	39.5	5900	1000800	111000
28-Dec-17	9500	PE	95.05	1647	1534000	80700

NIFTY OPTIONS HIGHEST REDUCTION IN OPEN INTEREST						
Expiry	Strike	Option Type	Settlement Price	Volume	Open Interest	Change In OI
31-Aug-17	10200	CE	74.85	80683	2744475	-290775
31-Aug-17	10100	CE	122.65	85500	2927175	-113625
31-Aug-17	11000	CE	1.05	9366	1227075	-89625
31-Aug-17	9100	PE	5	5123	753975	-51225
31-Aug-17	10000	CE	185.2	48566	2761275	-48600
31-Aug-17	9800	CE	341.55	3719	1231950	-40500
31-Aug-17	10200	PE	170.9	10357	777600	-33000
31-Aug-17	9400	PE	11.2	9111	2140050	-30600
31-Aug-17	10050	CE	151.5	6826	130275	-26550
31-Aug-17	8800	CE	1278.5	450	255750	-24375

Stock Option Open Interest Statistics

STOCK OPTIONS WITH HIGHEST ADDITION IN OPEN INTEREST							
Symbol	Expiry	Strike	Option Type	Settl. Price	Volume	Open Interest	Change in OI
SBIN	31-Aug-17	320	CE	8.7	5754	3705000	1995000
ASHOKLEY	31-Aug-17	120	CE	1.4	1271	3591000	1890000
SUZLON	31-Aug-17	20	CE	0.7	507	27210000	1620000
SBIN	31-Aug-17	315	CE	10.75	2850	1722000	1308000
SAIL	31-Aug-17	65	CE	1.85	585	4344000	1260000
SINTEX	31-Aug-17	40	CE	1.65	1203	2707500	1246875
SBIN	31-Aug-17	330	CE	5.35	4152	1980000	1242000
SBIN	31-Aug-17	300	PE	5.75	3651	3009000	1212000
SBIN	31-Aug-17	310	PE	9.8	1847	1422000	1212000
PNB	31-Aug-17	155	PE	5.65	1055	1869000	1190000

STOCK OPTIONS WITH HIGHEST REDUCTION IN OPEN INTEREST							
Symbol	Expiry	Strike	Option Type	Settl. Price	Volume	Open Int.	Change in OI
ICICIBANK	31-Aug-17	300	CE	10.9	1369	1622500	-734250
SBIN	31-Aug-17	300	CE	18.95	2265	2568000	-555000
ICICIBANK	31-Aug-17	310	CE	6.4	1859	2389750	-440000
ONGC	31-Aug-17	170	CE	4.3	1425	1871250	-401250
ONGC	31-Aug-17	165	CE	7.05	451	1027500	-318750
JSWENERGY	31-Aug-17	75	CE	1.7	93	1657500	-297500
PNB	31-Aug-17	150	PE	3.9	730	1865500	-269500
ICICIBANK	31-Aug-17	320	CE	3.6	1254	2502500	-250250
JSWENERGY	31-Aug-17	80	CE	0.55	101	1649000	-229500
INDIACEM	31-Aug-17	230	CE	2	301	917000	-196000

Research Team

Name	Designation	Email ID	Contact No.
Paras Bothra	President Equity Research	paras@ashikagroup.com	+91 22 6611 1704
Krishna Kumar Agarwal	Equity Research Analyst	krishna.a@ashikagroup.com	+91 33 4036 0646
Partha Mazumder	Equity Research Analyst	partha.m@ashikagroup.com	+91 33 4036 0647
Arijit Malakar	Equity Research Analyst	amalakar@ashikagroup.com	+91 33 4036 0644
Kapil Jagasia, CFA	Equity Research Analyst	kapil.j@ashikagroup.com	+91 22 6611 1715
Tirthankar Das	Technical & Derivative Analyst	tirthankar.d@ashikagroup.com	+91 33 4036 0645

Ashika Stock Broking Limited ("ASBL") or Research Entity has started its journey in the year 1994 and is engaged in the business of broking services, depository services, distributor of financial products (Mutual fund, IPO & Bonds). This research report has been prepared and distributed by ASBL in the sole capacity of a Research Analyst (Reg No. INH00000206) of SEBI (Research Analyst) Regulations 2014. ASBL is a wholly owned subsidiary of Ashika Global Securities (P) Ltd., a RBI registered non-deposit taking NBFC Company. Ashika group (details is enumerated on our website www.ashikagroup.com) is an integrated financial service provider inter alia engaged in the business of Investment Banking, Corporate Lending, Commodity Broking, Debt Syndication & Other Advisory Services.

There were no significant and material disciplinary actions against ASBL taken by any regulatory authority during last three years.

Disclosure

ASBL or its associates, its Research Analysts (including their relatives) may have financial interest in the subject company(ies). However, the said financial interest is not limited to having an open stock market position in /acting as advisor to /having a loan transaction with the subject company(ies) apart from registration as clients.

- ASBL or its Research Analysts (including their relatives) do not have any actual / beneficial ownership of 1% or more of securities of the subject company(ies) at the end of the month immediately preceding the date of publication of this report or date of the public appearance. However ASBL's associates may have actual / beneficial ownership of 1% or more of securities of the subject company(ies).
- ASBL or their Research Analysts (including their relatives) do not have any other material conflict of interest at the time of publication of this research report or date of the public appearance. However ASBL's associates might have an actual / potential conflict of interest (other than ownership).
- ASBL or its associates may have received compensation for investment banking, merchant banking, and brokerage services and for other products and services from the subject companies during the preceding 12 months. However, ASBL or its associates or its Research analysts (forming part of Research Desk) have not received any compensation or other benefits from the subject companies or third parties in connection with the research report. Moreover, Research Analysts have not received any compensation from the companies mentioned herein in the past twelve months.
- ASBL or their Research Analysts have not managed or co-managed public offering of securities for the subject company(ies) in the past twelve months. However ASBL's associates may have managed or co-managed public offering of securities for the subject company(ies) in the past twelve months.
- Research Analysts have not served as an officer, director or employee of the companies mentioned in the report.
- Neither ASBL nor its Research Analysts have been engaged in market making activity for the companies mentioned in the report.

Disclaimer

The research recommendation and information herein are solely for the personal information of the authorized recipient and does not construe to be an offer documents or any investment, legal or taxation advice or solicitation of any action based upon it. This report is not for public distribution or use by any person or entity, where such distribution, publication, availability or use would be contrary to law, regulation or subject to any registration or licensing requirement. We will not treat recipients as customer by virtue of their receiving this report. The report is based upon the information obtained from public sources that we consider reliable, but we do not guarantee its accuracy or completeness. ASBL shall not be in anyways responsible for any loss or damage that may arise to any such person from any inadvertent error in the information contained in this report. The recipients of this report should rely on their own investigations.