

Technical Report

Closing Brief

Nifty gave way to its first drop in seven sessions. Nifty ended at 10335.30 with a loss of 28.35 points or 0.27% on closing basis. On the sectoral front Nifty Realty index outshined the market by gaining 2.89%, while NIFTY PVT Bank, FMCG, BANK & FIN SERVICES managed to close on a positive note. Whereas NIFTY PSU Bank, Metal & Auto index dragged markets lower

Technical Build up

- ❖ Bullish candle with increase in volume
- ❖ Buy crossover in oscillators.
- ❖ Upper band of Bollinger exist at 10482
- ❖ Crucial moving average of 20/50 SMA are at 10167 and 10029
- ❖ 200 SMA trend deciding level exist at 9488

Outlook for the day

Indian Equity market gained nearly a percent and settled around the day's high, the data of core sectors came at six-month high in the September month and a significant jump in India's ranking in ease of doing business survey conducted by the World Bank added to the positivity. On the technical front, Nifty made a strong bullish candle on the daily chart indicating that the index is on track to hit its next crucial target of 10,600. During the day immediate support around 10380 levels and next support is at 10330 levels. Immediate resistance is around 10460 and next resistance is around 10500 levels. On the option front maximum Put OI is at 10000 followed by 10200 strike while maximum Call OI is at 10500 followed by 10400 strike.

Technical & Derivative Report

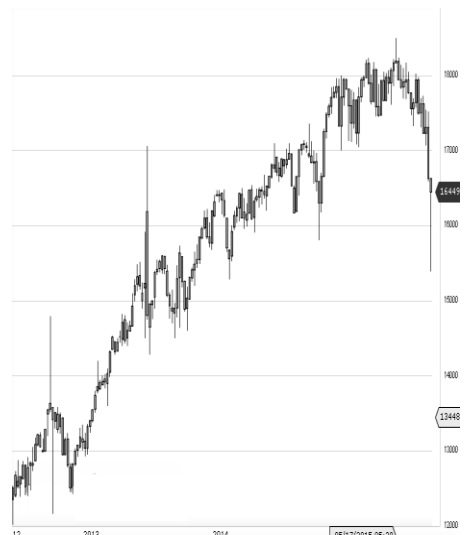
World Indices	LTP	Daily Ch(Pts)	Daily Ch(%)
Dow Jones	23435	57	0.25
Nasdaq	6716	-11	-0.17
S&P 500	2579	4	0.16
FTSE 100	7487	-5	-0.07
DAX	13465	235	1.78
Hang Seng	28563	-30	-0.11
Nikkei	22418	-1	-0.01
Sensex	33600	387	1.17
Nifty	10440	105	1.02

Commodity /Forex	LTP	Daily 1.1Ch(Pts)	Daily Ch(%)
Gold (\$/Oz)	1281.90	4.60	0.36
Silver (\$/Oz)	17.22	0.04	0.23
Copper(USD/lb.)	315.65	1.40	0.45
Brent			
Crude(USD/bbl)	60.63	0.14	0.23
USD/INR	64.59	-0.15	-0.24
USD/YEN	113.85	-0.33	-0.29
USD/EUR	1.1661	0.0042	0.36

Support/Resistance levels for Indian Equity Indices					
	S1	S2	CMP	R1	R2
Sensex	33400	33235	33600	33670	33800
Nifty	10380	10330	10440	10460	10500
Nifty (Fut)	10420	10370	10477	10500	10540

Pivot Level	
Sensex	33530
Nifty	10425

US: US Market closed mostly higher on Wednesday after the Federal Reserve kept interest rates unchanged. Technically DJIA is presently trading at the 5th leg through Elliot wave count with negative divergence in oscillators.



Increase in OI with Increase in Price (Long Buildup)

Symbol	Prev OI	Curr OI	OI Chg (%)	Curr Pr.	Pr.Chg (%)
VGUAR	2385000	3579000	50.1	232.4	7.6
D	1194000	1531000			
DABUR	0	0	28.2	350	4.8
CHOLAF					
IN	370000	453000	22.4	1237.75	7
IBREALE	4171000	5071250			
ST	0	0	21.6	236.45	4.4
BHARTI	3551300	4248130			
ARTL	0	0	19.6	546.65	9.1

Increase in OI with Decrease in Price (Short Buildup)

Symbol	Prev OI	Curr OI	OI Chg (%)	Curr Pr.	Pr.Chg (%)
HEXAW					
ARE	1863000	2505000	34.5	274	[3.5]
EICHER					
MOT	148175	171075	15.5	5	[3.9]
		1032840			
UPL	9001200	0	14.7	788	[2.2]
TVSMO					
TOR	5137000	5873000	14.3	714.45	[1.3]
IGL	1002100	1141250	13.9	1594	[0.2]

Nifty gained by 1.02% with Nifty future added 7.5 lakh shares in open interest and stock future added 660.9 Lakh shares in open interest.

- Nifty PCR increased to 1.50 from 1.45
- Total Nifty Calls added 6.2 lakh shares in open interest.
- Total Nifty Puts added 35.2 lakh shares in open interest.
- Maximum open interest (Nifty) in Calls for Oct series is at 10500 and 10000 put.
- FII's bought net Rs.1038.31 Cr(provisional), while DIIs sold net Rs.667.91 Cr in cash market.
- FII bought net Rs.390.47 Cr in F&O
- Securities in Ban Period: HDIL, JSWENERGY & WOCKPHARMA

Nifty Tracker

PARTICULARS	01/11/2017	31/10/2017	30/10/2017	27/10/2017
Spot	10440.5	10335.3	10363.65	10323.05
% Change in Spot	1.02%	-0.27%	0.39%	-0.20%
Nifty(FUT) Nov	10477.3	10368.5	10388.45	10356.85
Nifty(FUT) Nov Vol.	93341	61583	57333	77006
Nifty(FUT) Nov - OI	24323625	23742150	23481225	22954500
Nifty(FUT) Dec	10516.3	10406.2	10424.05	10392.25
Nifty(FUT) Dec Vol.	5034	1886	3032	2224
Nifty(FUT) Dec - OI	1036575	898950	852825	807300

Trade Statistics for 01/11/2017

PARTICULARS	NO. OF CONTRACTS	TURNOVER (RS. CR.)	PUT CALL RATIO
NSE Index Futures	1,75,106	15507	-
NSE Stock Futures	8,41,800	62117	-
NSE Index Options	60,30,061	5,76,907.48	-
NSE Stock Options	5,12,041	39467	0.45
NSE F&O Total Turnover	75,59,008	693,998	1.01
NSE Cash Turnover	-	37,910.59	-
BSE Cash Turnover	-	5,317.84	-
Total Turnover	-	737227	-

FII Corner (F&O)

FII NET BUYING/SELLING & CHANGE IN OPEN INTEREST (Cr. Rupee)						
PARTICULARS	01/11/2017		31/10/2017		30/10/2017	
	Net Buying /Selling	Change In Open interest	Net Buying /Selling	Change In Open interest	Net Buying /Selling	Change In Open interest
Index Future	-49	1570	-630	343	191	507
Index option	215	4298	883	2646	484	2674
Stock Future	225	1699	-315	1288	125	1713
Stock option	0	493	-65	773	-100	1165
Total	391	8061	-127	5051	700	6060

Market Open Interest

ADDITION/REDUCTION IN MARKET OPEN INTEREST					
Contracts	01/11/2017	31/10/2017	30/10/2017	27/10/2017	26/10/2017
Index Futures	2084	189	850	-10346	588
Index Options	2543	2560	2838	-17575	4699
Stock Futures	13166	5374	12148	-81024	20279
Stock Options	1493	1416	2567	-13635	319
F&O Total	19287	9539	18402.91	-122579.91	25884.8

Nifty Option Open Interest Statistics

NIFTY OPTIONS HIGHEST ADDITION IN OPEN INTEREST						
Expiry	Strike	Option Type	Settlement Price	Volume	Open Interest	Change In OI
30-Nov-17	10400	PE	96.75	119608	2659500	1126575
30-Nov-17	10200	PE	49.85	99971	4763550	572850
30-Nov-17	10300	PE	68.8	134667	4173975	517050
30-Nov-17	10700	CE	35.9	84347	2561925	371400
30-Nov-17	10500	CE	112	137811	3423225	357975
30-Nov-17	10900	CE	7.85	25600	838725	338325
30-Nov-17	10100	PE	35.6	78296	3831000	331650
30-Nov-17	10600	PE	187.7	11948	520050	283950
30-Nov-17	10500	PE	135.5	49041	1213200	216150
30-Nov-17	10700	PE	256.1	6359	362925	199575

NIFTY OPTIONS HIGHEST REDUCTION IN OPEN INTEREST						
Expiry	Strike	Option Type	Settlement Price	Volume	Open Interest	Change In OI
30-Nov-17	10600	CE	66.25	112020	2065125	-264150
30-Nov-17	9400	PE	4.45	7247	505650	-206475
30-Nov-17	11000	CE	4.1	30861	1469400	-187350
30-Nov-17	9600	PE	7.45	18527	1473450	-159900
30-Nov-17	9800	PE	13.8	24419	2140950	-145875
30-Nov-17	9500	CE	972.1	2628	614025	-141000
30-Nov-17	10200	CE	321.4	7729	1150725	-139875
30-Nov-17	10100	CE	408.65	6714	992025	-103425
30-Nov-17	10400	CE	170.7	88454	3160575	-88875
30-Nov-17	9900	PE	19.25	32122	2108550	-75600

Stock Option Open Interest Statistics

STOCK OPTIONS WITH HIGHEST ADDITION IN OPEN INTEREST							
Symbol	Expiry	Strike	Option Type	Settl. Price	Volume	Open Interest	Change in OI
SUZLON	30-Nov-17	20	CE	0.2	741	21720000	4800000
SYNDIBANK	30-Nov-17	100	CE	1.65	1926	4887000	3618000
JPASSOCIAT	30-Nov-17	22.5	CE	0.5	172	7140000	2618000
HDIL	30-Nov-17	65	CE	3.2	1604	5528000	2592000
IDFCBANK	30-Nov-17	62.5	CE	2.7	1405	3123000	1674000
SYNDIBANK	30-Nov-17	95	CE	2.75	811	2259000	1647000
SAIL	30-Nov-17	70	CE	12.4	244	3780000	1488000
IDFCBANK	30-Nov-17	60	PE	1.2	510	1890000	1323000
HDIL	30-Nov-17	70	CE	2	863	3576000	1264000
SYNDIBANK	30-Nov-17	90	PE	4.7	370	1287000	1260000

STOCK OPTIONS WITH HIGHEST REDUCTION IN OPEN INTEREST							
Symbol	Expiry	Strike	Option Type	Settl. Price	Volume	Open Int.	Change in OI
ICICBANK	30-Nov-17	290	CE	25.5	638	728750	-1498750
IDFCBANK	30-Nov-17	60	CE	4.05	2038	5022000	-684000
SAIL	30-Nov-17	85	CE	3.6	935	3864000	-672000
IDFCBANK	30-Nov-17	57.5	CE	6	424	1575000	-612000
SAIL	30-Nov-17	80	CE	5.7	706	2868000	-600000
DLF	30-Nov-17	200	CE	15.55	582	1705000	-590000
IDFC	30-Nov-17	65	CE	3.05	674	3234000	-580800
IDBI	30-Nov-17	70	CE	1.3	340	2296000	-568000
HINDALCO	30-Nov-17	280	CE	10.45	1131	1596000	-535500
IDFC	30-Nov-17	70	CE	1.35	589	5412000	-488400

Research Team

Name	Designation	Email ID	Contact No.
Paras Bothra	President Equity Research	paras@ashikagroup.com	+91 22 6611 1704
Krishna Kumar Agarwal	Equity Research Analyst	krishna.a@ashikagroup.com	+91 33 4036 0646
Partha Mazumder	Equity Research Analyst	partha.m@ashikagroup.com	+91 33 4036 0647
Arijit Malakar	Equity Research Analyst	amalakar@ashikagroup.com	+91 33 4036 0644
Kapil Jagasia	Equity Research Analyst	kapil.j@ashikagroup.com	+91 22 6611 1715
Tirthankar Das	Technical & Derivative Analyst	tirthankar.d@ashikagroup.com	+91 33 4036 0645

Ashika Stock Broking Limited ("ASBL") or Research Entity has started its journey in the year 1994 and is engaged in the business of broking services, depository services, distributor of financial products (Mutual fund, IPO & Bonds). This research report has been prepared and distributed by ASBL in the sole capacity of a Research Analyst (Reg No. INH00000206) of SEBI (Research Analyst) Regulations 2014. ASBL is a wholly owned subsidiary of Ashika Global Securities (P) Ltd., a RBI registered non-deposit taking NBFC Company. Ashika group (details is enumerated on our website www.ashikagroup.com) is an integrated financial service provider inter alia engaged in the business of Investment Banking, Corporate Lending, Commodity Broking, Debt Syndication & Other Advisory Services.

There were no significant and material disciplinary actions against ASBL taken by any regulatory authority during last three years.

Disclosure

ASBL or its associates, its Research Analysts (including their relatives) may have financial interest in the subject company(ies). However, the said financial interest is not limited to having an open stock market position in /acting as advisor to /having a loan transaction with the subject company(ies) apart from registration as clients.

- 1) ASBL or its Research Analysts (including their relatives) do not have any actual / beneficial ownership of 1% or more of securities of the subject company(ies) at the end of the month immediately preceding the date of publication of this report or date of the public appearance. However ASBL's associates may have actual / beneficial ownership of 1% or more of securities of the subject company(ies).
- 2) ASBL or their Research Analysts (including their relatives) do not have any other material conflict of interest at the time of publication of this research report or date of the public appearance. However ASBL's associates might have an actual / potential conflict of interest (other than ownership).
- 3) ASBL or its associates may have received compensation for investment banking, merchant banking, and brokerage services and for other products and services from the subject companies during the preceding 12 months. However, ASBL or its associates or its Research analysts (forming part of Research Desk) have not received any compensation or other benefits from the subject companies or third parties in connection with the research report. Moreover, Research Analysts have not received any compensation from the companies mentioned herein in the past twelve months.
- 4) ASBL or their Research Analysts have not managed or co-managed public offering of securities for the subject company(ies) in the past twelve months. However ASBL's associates may have managed or co-managed public offering of securities for the subject company(ies) in the past twelve months.
- 5) Research Analysts have not served as an officer, director or employee of the companies mentioned in the report.
- 6) Neither ASBL nor its Research Analysts have been engaged in market making activity for the companies mentioned in the report.

Disclaimer

The research recommendation and information herein are solely for the personal information of the authorized recipient and does not construe to be an offer documents or any investment, legal or taxation advice or solicitation of any action based upon it. This report is not for public distribution or use by any person or entity, where such distribution, publication, availability or use would be contrary to law, regulation or subject to any registration or licensing requirement. We will not treat recipients as customer by virtue of their receiving this report. The report is based upon the information obtained from public sources that we consider reliable, but we do not guarantee its accuracy or completeness. ASBL shall not be in anyways responsible for any loss or damage that may arise to any such person from any inadvertent error in the information contained in this report. The recipients of this report should rely on their own investigations.